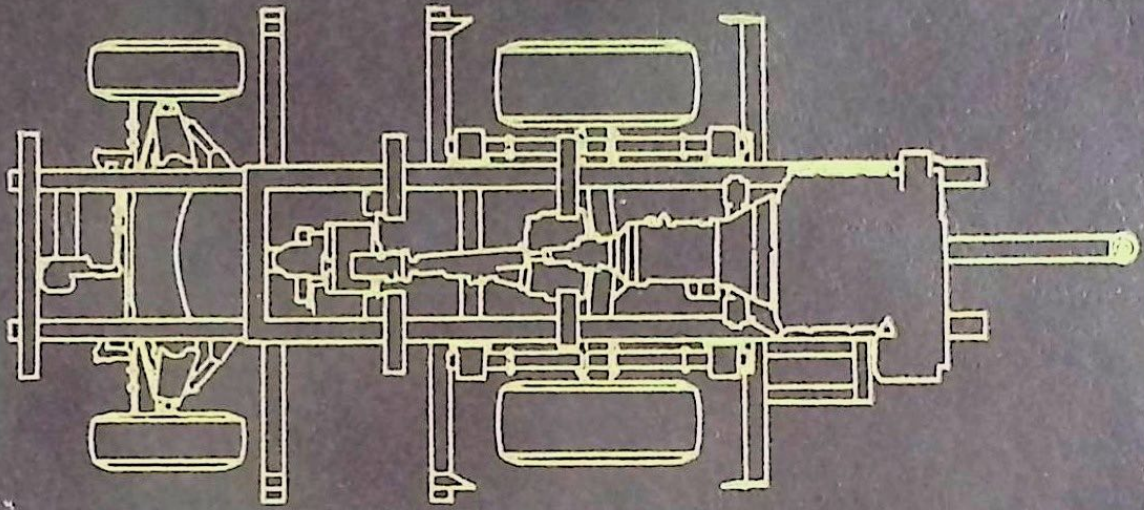
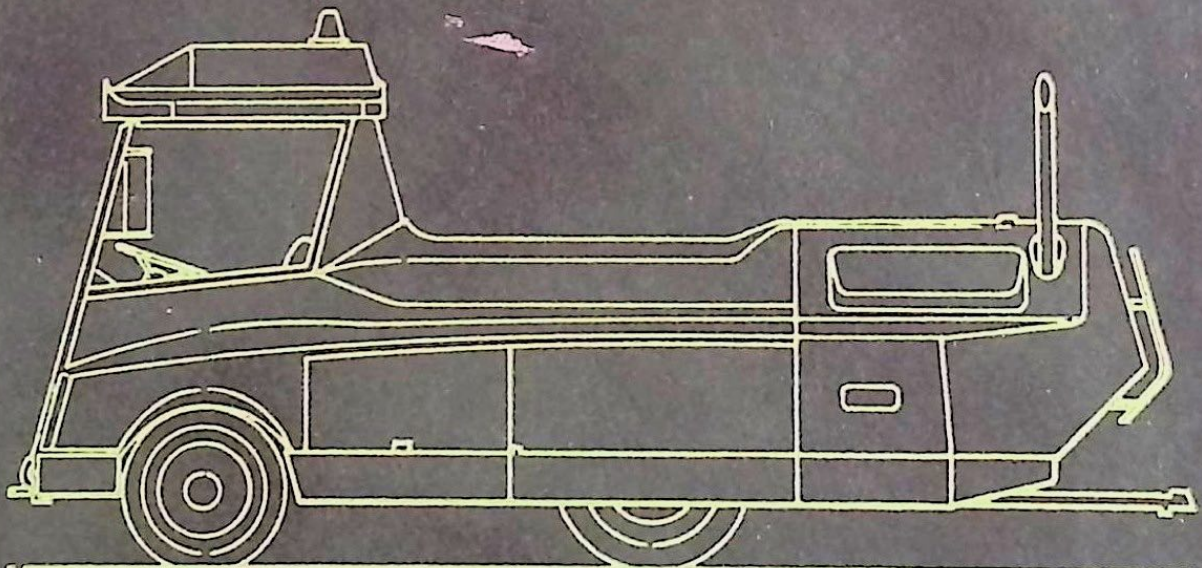


Walt  Disney World



PARKING LOT TRAM TRACTOR



MAINTENANCE MANUAL

 ENTERPRISES, INC.
Imagining



INTER-OFFICE **mapo** COMMUNICATION
A DIVISION OF WALT DISNEY PRODUCTIONS

TO DISTRIBUTION DATE SEPTEMBER 11, 1972
FROM ENGINEERING/DRAFTING (MAPO) SUBJECT MAINTENANCE MANUAL -
TECHNICAL ILLUSTRATION GROUP PARKING LOT TRAM TRACTOR

ENCLOSURE: (1)

MAINTENANCE MANUAL
PARKING LOT TRAM TRACTOR
WALT DISNEY WORLD

1. ENCLOSURE (1) IS DESIGNED TO SERVE AS AN AID/TOOL IN THE MAINTENANCE AND REPAIR OF THE PARKING LOT TRAM TRACTOR-- WALT DISNEY WORLD.
2. YOUR EVALUATION AND CONSIDERATION OF THE CONTENTS OF THIS MANUAL, AS WELL AS SUGGESTIONS AND "CONSTRUCTIVE" CRITICISM, IS REQUESTED.

Monte Hoult
MONTE HOULT
MAPO TECHNICAL ILLUSTRATION

R. K. Holloway
R. K. HOLLOWAY
MAPO TECHNICAL ILLUSTRATION

RKH:NP

DISTRIBUTION:

WDW - LEE BIGGINS 3
MOE BONE 1
TED CROWELL 1
ARNOLD LINDBERG 1

WED - JEAN KENNEY 1

MAPO BOB GURR 1
BOB HOLLOWAY 1

RA Law

LIST OF ILLUSTRATIONS

WED  **ENTERPRISES, INC.**
Imagining

1401 Flower St., Glendale, California, 91201

Phone 245-8951

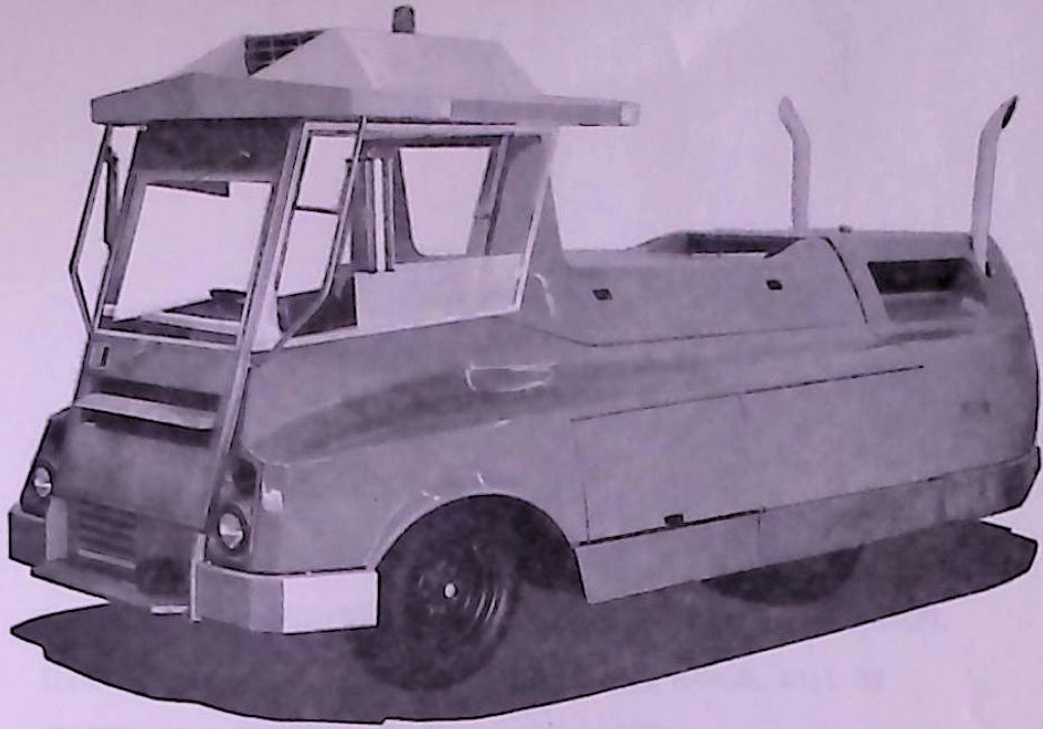
NOTICE

The data in this document incorporates proprietary rights of
WED ENTERPRISES, INC.

1401 FLOWER ST. — GLENDALE, CALIFORNIA 91201

Any party accepting this document does so in confidence and agrees that it shall not be duplicated in whole or in part, nor disclosed to others, without the consent of WED Enterprises, Inc.

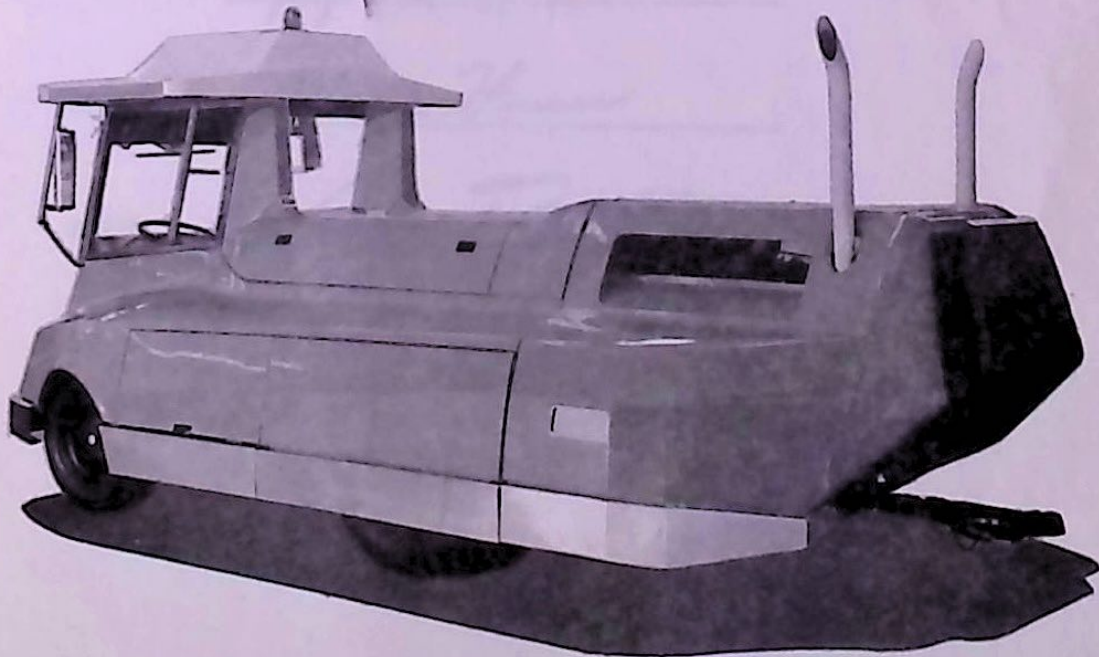
© 1972 BY WED ENTERPRISES, INC.



ENGINE CODE - L534SD

TRANSMISSION CODE - 1 TRANSMATIC MT-42

GENERAL VEHICLE CODE - L-900



PREFACE

DETAIL DRAWINGS/DOCUMENTS NOT APPEARING IN THIS MANUAL ARE AVAILABLE UPON REQUEST, FROM ENGINEERING SECTION - TECHNICAL ILLUSTRATION GROUP - MAPO BUILDING. THIS MANUAL WILL BE UPDATED ON A PERIODIC OR AS REQUIRED BASIS.

APPROVED: *Roger Buggi*

APPROVED: *Monie Hauer*

APPROVED: *John Tamm*

LIST OF ILLUSTRATIONS

MAINTENANCE MANUAL
PARKING LOT TRACTOR
WALT DISNEY WORLD

INTRODUCTION

THE PURPOSE OF THIS MANUAL IS TO PROVIDE A GUIDE FOR USE IN THE ASSEMBLY, DISASSEMBLY, REPAIR AND MAINTENANCE OF THE PARKING LOT TRAM TRACTOR, WALT DISNEY WORLD.

INFORMATION, ILLUSTRATIONS, AND SPECIFICATIONS CONTAINED IN THIS DOCUMENT ARE BASED ON THE LATEST PRODUCT INFORMATION AVAILABLE AT THE TIME OF PUBLICATION APPROVAL.

MUCH OF THE MATERIAL CONTAINED HEREIN HAS BEEN TAKEN VERBATIM FROM THE APPLICABLE MANUFACTURERS CATALOGUES/FIELD MAINTENANCE MANUALS. AS A RESULT, SEVERAL SECTION AND PAGE NUMBERING SYSTEMS APPEAR i.e. FORD AND CHEVROLET. YOU ARE REQUESTED TO REFER TO THE SECTION/PAGE NUMBERS THAT APPEAR IN THE LOWER RIGHT HAND CORNER OF EACH PAGE AS YOU USE THIS MANUAL.

IN SOME CASES MORE INFORMATION HAS BEEN PROVIDED WITHIN A SECTION THAN IS APPLICABLE TO THE TRAM TRACTOR ONLY. THIS MATERIAL HAS NOT BEEN REMOVED BECAUSE IT IS APPLICABLE TO OTHER VEHICLES IN USE AT WDW. IN THOSE CASES WHERE MATERIAL WITHIN A SECTION IS NOT APPLICABLE, THE TITLE FOR THAT MATERIAL HAS BEEN SHADED OVER IN THE INDEX AT THE BEGINNING OF THE SECTION.

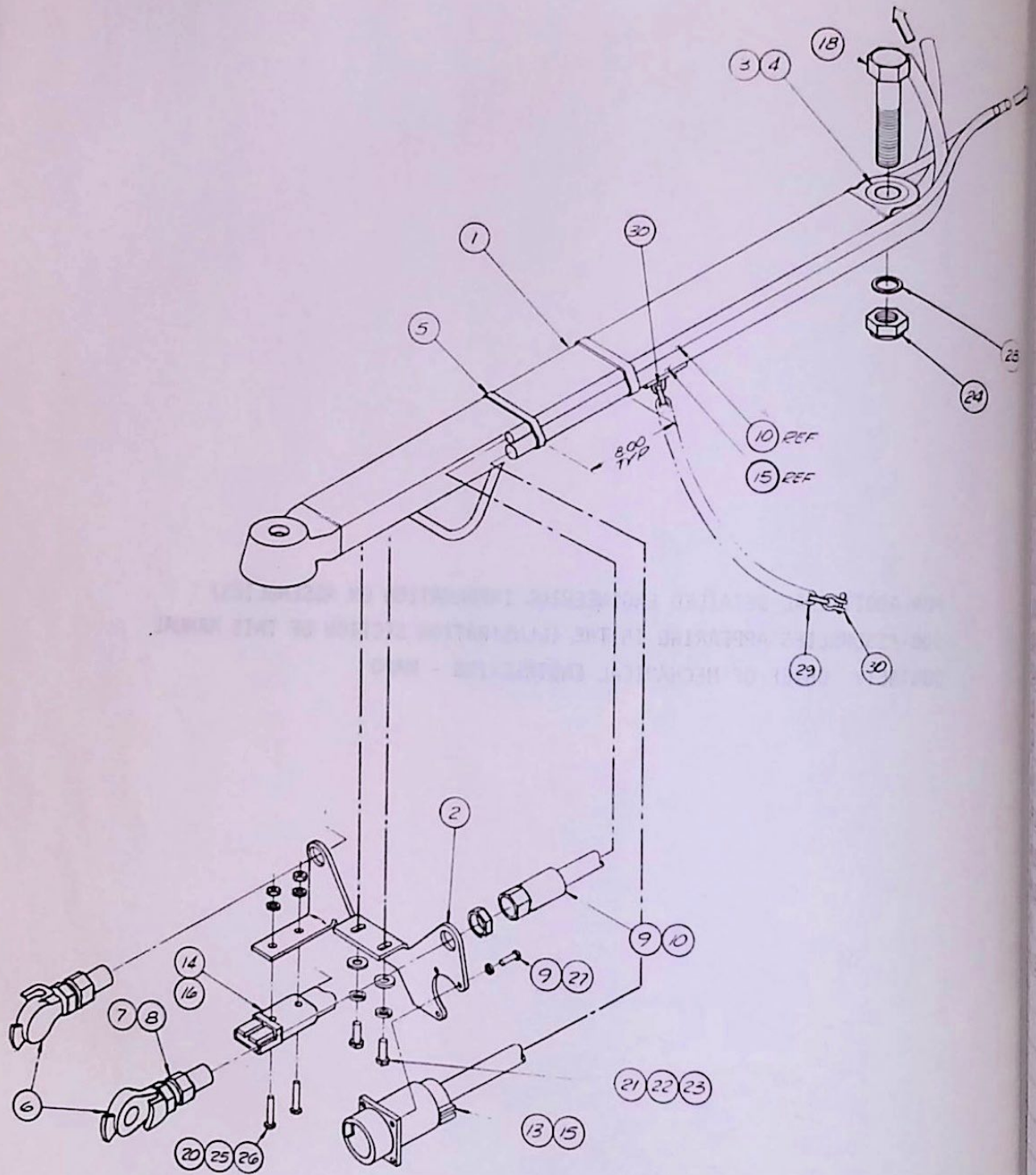
TABLE OF CONTENT

DIVISION	TITLE	PAGE
-----	PREFACE	i
-----	INTRODUCTION	ii
A	<u>LIST OF ILLUSTRATIONS</u>	
	205624 TONGUE ASSY.	A1
	205688 ENGINE INSTRUMENT PANEL ASSY.	A2
	415502 RUNNING GEAR & POWER TRAIN PARTS BREAKDOWN	A3
	415544 ENGINE AIR CLEANER & EXHAUST SYSTEM ASSY.	A4
	415558 AIR SYSTEM ASSY.	A5
	415561 CAB DOOR ASSY.	A6
	415562 CONTROL CABLES ASSY.	A7
	415563 ELECTRICAL SYSTEM	A8
	415579 ALTERNATOR, AIR PUMP INSTALLATION	A9
	415595 THROTTLE LINKAGE ASSY. (SEE PAGE C92 FOR ADDITIONAL INFORMATION)	A10
	415598 CAB ASSY.	A11
	415599 PARKING LOT TRACTOR ASSY.	A12
	415600 BODY ASSY.	A13
	415601 AIR CONDITIONING ASSY.	A14
	415602 CNG FUEL ASSY.	A15
	415610 BATTERY ASSY.	A16
B	<u>STEERING & SUSPENSION</u>	
	STEERING (CHEVROLET)	B1
	MANUAL STEERING GEARS (CHEVROLET)	B12
	POWER STEERING PUMP (FORD)	B43
	FRONT SUSPENSION (CHEVROLET)	B51
C	<u>ENGINE</u>	
	GENERAL ENGINE SERVICE (FORD)	C1
	ENGINE - SUPER DUTY (FORD)	C25
	GENERAL IGNITION SERVICE (FORD)	C54
	DISTRIBUTOR (FORD)	C72
	GOVERNOR (FORD)	C86
	THROTTLE LINKAGE (FORD)	C92
	CARBUREATOR (IMPCO)	C93
	GENERAL COOLING SYSTEM (FORD)	C96
	RADIATOR (FORD)	C99
	STARTER (FORD)	C127
D	<u>POWER TRAIN</u>	
	DRIVING AXLE (FORD)	D1
	REAR AXLE - DOUBLE REDUCTION (FORD)	D16
	DRIVE SHAFT (FORD)	D32
	TRANSFER CASES (ROCKWELL STANDARD)	D39
	TRANSMATIC DRIVE TRANSMISSION (FORD)	D59
	MODEL "M-A" CONTROL (MORSE)	D99
	TRANS KIT FOR ALLISON "MT" SERIES (MORSE)	D106
	SELECTOR VALVE/THROTTLE VALVE LEVERS FOR ALLISON "MT" TRANSMISSIONS (MORSE)	D108

TABLE OF CONTENT

DIVISION	TITLE	PAGE
E	<u>BRAKES</u> GENERAL AIR BRAKE SERVICE (FORD) AIR BRAKES (FORD) PARKING BRAKE (FORD) FILTER (KING)	E1 E26 E31 E34
F	<u>ELECTRICAL</u> REGULATOR (LEECE-NEVILLE) ALTERNATOR (LEECE-NEVILLE) WINDSHIELD WIPER (BOSCH) INSTRUMENT & SWITCH PANEL (MARINE) AMMETER	F1 F10 F31 F36 F38
G	<u>COMPRESSED NATURAL GAS (CNG)</u>	G1
H	<u>LUBRICATION</u> LUBRICATION 800/900 SERIES (FORD)	H1
J	SEAT ASSEMBLY (BOSTROM)	J1
K	<u>AIR CONDITIONER (THERMO KING)</u>	K1

FOR ADDITIONAL DETAILED ENGINEERING INFORMATION ON ASSEMBLIES/
SUB-ASSEMBLIES APPEARING IN THE ILLUSTRATION SECTION OF THIS MANUAL
CONTACT: CHIEF OF MECHANICAL ENGINEERING - MAPO



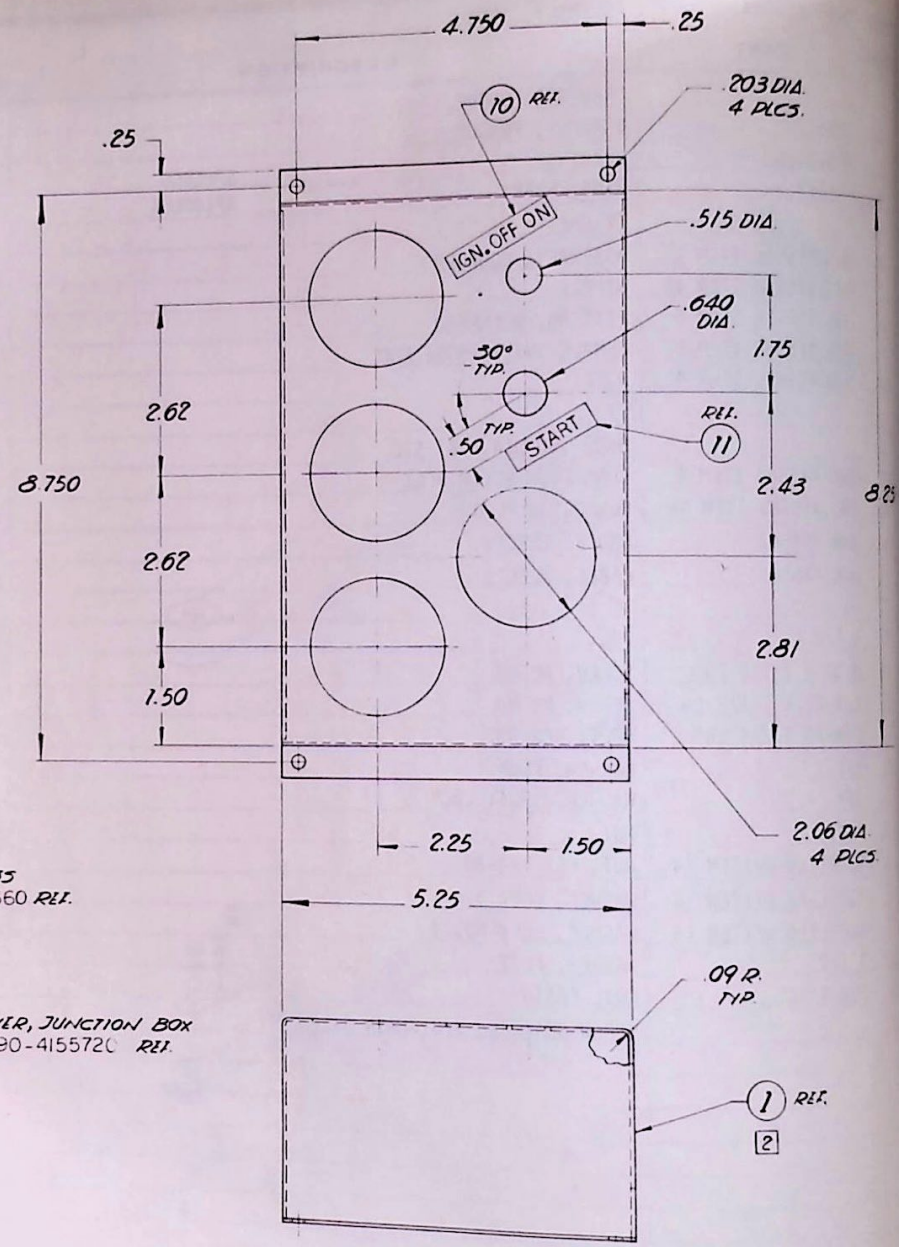
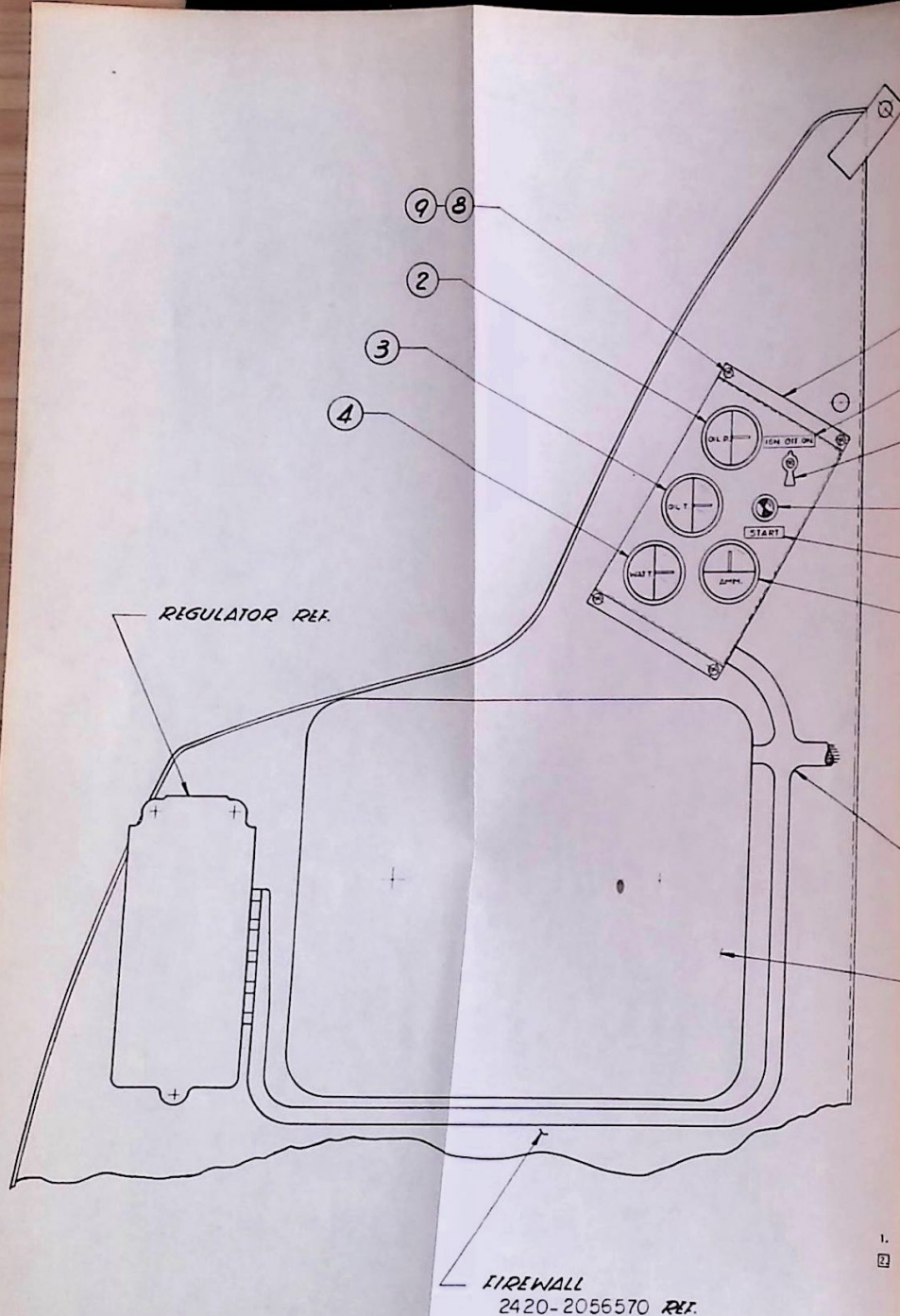
A1

2540-205624
ASSEMBLY, TONGUE

DWG 2540-205624

ASSEMBLY, TONGUE

ITEM	PART	DESCRIPTION	QTY
1.		DRAW BAR TONGUE	1
2.	2056170	BRACKET, TONGUE	1
3.	BTS-24LS	BEARING	1
4.	RR-275	RING, SNAP	2
5.		TY-RAP	A/R
6.	DWG.415558 ITEM 25	ASSEMBLY, COUPLER	REF
7.	DWG.415558 ITEM 45	NIPPLE	REF
8.	DWG.415558 ITEM 5	FITTING, BULKHEAD	REF
9.	DWG.415558 ITEM 26	FEMALE SWIVEL HOSE END	REF
10.	DWG.415558 ITEM 42	HOSE	REF
11.			
12.		BAR, .50 DIA H.R. STL.	REF
13.	DWG.415569 ITEM 4	CONNECTOR RECEPTACLE	REF
14.	DWG.415563 ITEM 48	CONNECTOR PLUG	REF
15.	DWG.415563	CABLE, ELECT.	REF
16.	DWG.415569	CABLE, ELECT.	REF
17.			
18.	1 1/2	BOLT	1
19.	8-32 X 1 1/2 LG	SCREW, RD HD	3
20.	1/4-28 X 1 1/2 LG	SCREW, RD HD	2
21.	1/4-20 X 3/4 LG	BOLT, HEX HD	2
22.	1/4	WASHER, FLAT	2
23.	1/4	WASHER, SPLIT LOCK	2
24.	1 1/2	NUT	1
25.	SUPPLIED W/ITEM 14	NUT, HEX 1/4-28	2
26.	SUPPLIED W/ITEM 14	WASHER, LOCK 1/4	2
27.	SUPPLIED W/ITEM 13	WASHER, LOCK NO. 8	2
28.	1 1/2	WASHER, FLAT	1
29.	3/8 X 26" LG	COIL CHAIN	2
30.		SCREW SHACKEL, 3/8 CHAIN SIZE	4



- 1. (1) PANEL ASS'Y REQ'D PER TRACTOR.
- (2) ITEM - 1 ANODIZE, CLEAR-PER MIL.
A - 6625 TYPE 1

DWG 2590-205688

ASSEMBLY, ENGINE INSTRUMENT PANEL

ITEM	PART	DESCRIPTION	QTY
1.	-1	HOUSING, 20 GA (.032) 6061-T4 ALUM	1
2.	415563-11	GAUGE, OIL PRESSURE	1
3.	415563-12	GAUGE, OIL TEMP	1
4.	415563-13	GAUGE, WATER TEMP	1
5.	415563-21	AMMETER	1
6.	415563-33	SWITCH	1
7.	415563-54	PUSH BUTTON	1
8.	-2	SCREW, RD HD #10-32 NF X 3/8 LG	4
9.	-3	LOCKWASHER #10	4
10.	-4	DYMO LABEL	1
11.	-5	DYMO LABEL	1

ITEM	PART	DESCRIPTION	QTY
1.	10-16.5 X 6 PLY	TIRE, SUPER SINGLE HI-MILER	2
2.	15-19.5 X 14 PLY	TIRE, SUPER SINGLE HI-MILER	2
3.	16.5X8.25 4.598 BORE	WHEEL, 8 HOLE 6.5 DIA B.C.	2
4.	0400	WHEEL, 10 HOLE 3.06 IM	2
5.		VALVE STEM	2
6.		ASSEMBLY, VALVE STEM	2
7.	3953435	CAP, FRONT HUB GREASE	2
8.	379656	NUT, SPINDLE	2
9.	379657	WASHER, FRONT HUB OUTER	2
10.	7450696	CONE, OUTER	2
11.		PIN, COTTER	2
12.	7450697	ASSEMBLY, OUTER BEARING	2
13.	3883321	HUB	2
14.	3883323	BOLT, HUB	16
15.	H16N	NUT, WHEEL	16
16.	7451287	ASSEMBLY, INNER BEARING	2
17.	7451286	CONE, INNER	2
18.	3857731	SEAL	2
19.	3935178	KNUCKLE	2
20.	3944975	ARM, STEERING KNUCKLE	1
21.	3944976	ARM, STEERING KNUCKLE	1
22.	3823255	BOLT, ARM	4
23.	3846347	STUD UNIT, UPPER	2
24.	9745180	STUD, LOWER BALL	2
25.	3842891	ARM, UPPER L.H. (INCL. ITEMS 31,23,33 & 38)	1
26.	3842892	ARM, UPPER R.H. (INCL. ITEMS 31,23,33 & 38)	1
27.	2056960	ARM, LOWER L.H. (INCL. ITEMS 39,32,36 & 24)	1
28.	2056950	ARM, LOWER R.H. (INCL. ITEMS 39,32,36 & 24)	1
29.	3773361	BUMPER, UPPER	4
30.	3852039	BUMPER, LOWER	2
31.	3846351	SHAFT UNIT, ARM UPPER	2
32.	3901038	SHAFT UNIT, ARM LOWER	2
33.	3842895	BUSHING, UPPER SHAFT	4
34.	3761627	WASHER, LOWER BALL STUD	2
35.	3892421	U-BOLT, SHAFT LOWER	4
36.	3842882	BUSHING, LOWER SHAFT	4
37.	3795464	SHIM, SHAFT UNIT UPPER	20
38.	3842890	SEAL, BUSHING UPPER	4
39.	3842883	SEAL, KNUCKLE LOWER	4
40.	63338	SHOCK ABSORBER	2
41.	3970924	CROSSMEMBER	1
42.	7812118	SLEEVE, ADJUST KIT	3

ITEM	PART	DESCRIPTION	QTY
43.	3972487	END ASSEMBLY, TIE ROD L.H.	3
44.	3972488	END ASSEMBLY, TIE ROD R.H.	3
45.	205627	GUARD, MANIFOLD	1
46.	415605	ROD, STEERING CONNECTING	1
47.	3771317	SPACER, ARM UPPER	4
48.	3941722	ARM, IDLE	2
49.	4156040	ARM, STEERING, MODIFIED	1
50.	7809910	ASSEMBLY, STEERING GEAR	1
51.	7808996	COUPLING	1
52.	2914622	PLATE	2
53.	2509058	WASHER	8
54.	2914626	NUT	8
55.	2961778	CLIP	4
56.	2237855	SEAT	2
57.	2230362	SHIM	2
58.	2914625	SEAT	2
59.	2914645	SPRING, 4600 LB.	2
60.	2907972	LEAF	2
61.	2238337	SUPPORT	2
62.	2907991	BUSHING	2
63.		BOLT	2
64.		NUT	2
65.	AN14-46A	BOLT, BUSHING 7/8-14 X 3 3/4 GRIP	2
66.	7/8-14	NUT	2
67.	2910858	PIN, REBOUND	2
68.	2910859	PIN LOCK	4
69.	2910838	BRACKET, FRONT R.H.	4
70.	2910839	BRACKET, FRONT L.H.	1
71.	2910841	BRACKET, REAR L.H.	1
72.	2910842	BRACKET, REAR R.H.	1
73.	4155000	ASSEMBLY, FRAME WELDMENT	1
74.		AXLE ASS'Y Q-245 RDA (CARRIER INVERTED) 9.299:1, 40.25 DOWEL CENTERS, 6° PINION NOSE UP, 15 x 7 STOPMASTER	1
75.		TRANSFER CASE T-226 1.62:1 SPACER LOCKED LOW GEAR, DLM BRAKE, FRONT OUTPUT WITHOUT DECLUTCH, WITHOUT POWER TAKE OFF, 8-BOLT MOUNTING WITHOUT TRUNNION	1
76.	3854967	SPRING, COIL	1
77.	C2TZ - 6068-A	MOUNT, UPPER	1
78.	B8TZ - 6A061-B	MOUNT, LOWER	1
79.	B8TZ - 6A027-A	SPACER	1

DWG 2520-415502

ASSEMBLY, RUNNING GEAR & POWER TRAIN

SHEET 3 OF 5

ITEM	PART	DESCRIPTION	QTY
80.		BOLT, HEX HD., 5/8-11 x 4.25 LG.	2
81.		NUT, HEX, S.L., 5/8-11	5
82.	C2TZ-6096-A	BRACKET	2
83.	CP72N-22	BEARING, CROSS ASSEMBLY	4
84.	72NLS32-18	SLIP YOKE	2
85.	DC72N-1	GROUP, YOKE SPLINE SEAL	2
86.	72NPS32-4F	SPLINE PLUG	2
87.	72NY53(OR 25F)	WELD YOKE	2
88.	PL-EX20-1	EXPENSION PLUG, YOKE	2
89.	PL-WE36-1	WELCH PLUG, SLIP YOKE	2
90.	RT35-13-1-5	ROUND TUBE, LENGTH AS REQ'D	2
91.	PL-D6-27-1	OIL PLUG	2
92.	1641-B	GREASE FITTING, 1/4-28.	16
93.		BOLT, HEX HD., 1/2-13 x .88 LG.	8
94.		1/2-13 x 1-1/4 LG.	4
95.		1/2-13 x 1-3/4 LG.	22
96.		1/2-13 x 2-3/4 LG.	4
97.		9/16-12 x 3-1/2 LG.	1
98.		3/8-24 x 1-1/4 LG.	1
99.		3/4-10 x 1-1/2 LG.	4
100.		1/2-20 x 2-3/4 LG., GRADE 8	4
101.		1/2-20 x 2-3/8 LG., GRADE 8	4
102.		3/4-10 x 4" LG.	2
103.		BOLT, HEX HD., 1/4-20 x 1-1/2 LG.	1
104.		BOLT, HEX HD., 3/4-10 x 2.50 LG.	2
105.		NUT, HEX, S.L., 9/16-12	8
106.		NUT, HEX, S.L., 1/2-13	30
107.		BOLT, HEX HD., 9/16-12 x 2" LG.	2
108.	N 40	NUT, HEX, SLOTTED	2
109.	N 11	NUT, HEX, SLOTTED	12
110.		CASTELLATED, 1/2-20	4
111.		S.L., 5/16-18	2
112.		NUT, HEX, 1/2-20	4
113.		WASHER, SPLIT LOCK, 3/8	5
114.		, SPLIT LOCK, 3/4	8
115.		, SPLIT LOCK, 1/2	27
116.		, SPLIT LOCK, 5/8	10
117.		WASHER, FLAT, 1/2	38
118.			
119.		COTTER PIN, 1/8 DIA x 1-1/2 LG.	14
120.		NUT, HEX, 1/4-20, S.L.	1
121.		BOLT, HEX HD., 5/8-11 x 6.00	2

FORD

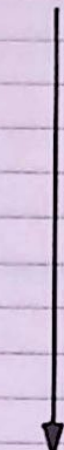
ROCKWELL-STANDARD

ROCKWELL-STANDARD

ALEMITE

ITEM	PART	DESCRIPTION	QTY
122.		BOLT, HEX HD., 5/8-11 x 3.50	1
123.	4156160	LOCK, TRANSFER CASE	1
124.		WASHER, SPLIT LOCK, 9/16	3
125.	8A-8115	DRAIN	FORD 2
126.	3/8 x 1/4 PTR-B	REDUCER	PARKER 2
127.	3750 x 6	TEE	WEATHERFORD 1
128.	200 x 8	MALE CONNECTOR	↑ WEATHERFORD 3
129.	105 x 8	NUT	↓ WEATHERFORD 4
130.	400 x 8	MALE ELBOW	WEATHERFORD 1
131.		TUBE, 1/2 O.D., COPPER REFRIGERATION	AR
132.	1/4 x 1/8 PTR-B	REDUCER	PARKER 1
133.	3600 x 2	TEE	WEATHERFORD 1
134.	10006B-102	HOSE NIPPLE	WEATHERFORD 1
135.		NUT, HEX, S.L., 9/16-18	4
136.	H101-3/8	HOSE, 3/8 I.D.,	WEATHERFORD 2 1/2
137.		END NUT, SPEEDO-CABLE, KNURLED, FEMALE 7/8-18 THD,	STEWART-WARNER 1
138.		WASHER, FLAT, 5/8	6
139.	1-1/8 DIA	EXPANSION PLUG, STD.,	DORMAN 1
140.		DISC, 13/16 DIA x 1/8 THK NEOPRENE	1
141.		HOSE CLAMP, 3/4 DIA	1
142.		BOLT, HEX HD, 1/2-13 x 1-1/2 LG. GRADE 8	8
143.	4156090	BRKT., TRANSFER CASE, FWD.	1
144.	4155160	" " " , L.H.	1
145.	4155170	" " " , R.H.	1
146.	37889	NUT, LUG, L.H.	BUDD 10
147.	37888	NUT, LUG, R.H.	BUDD 10
148.		NUT, HEX, S.L., 3/8-16, THIN	8
149.		BOLT, HEX HD, 3/8-24 x 1" LG. GRADE 8	8
150.	DOTZ-6007-AG	ENGINE, BASIC	FORD 1
151.	MT-42	TRANSMISSION, TRANSMATIC	FORD 1
152.	B8QH-8600-F	FAN, PULL TYPE	FORD 1
153.	TRU-FLO 500	AIR COMPRESSOR, SIDE MOUNT, 12 FT.	BENDIX-WESTINGHOUSE 1
154.	CITE-2A-880-A	MOUNTING PLATE, A/C	FORD 1
155.	B8QH-2875-A	GASKET, A/C MOUNT	↑ FORD 1
156.	C2TZ-7089-B	FLANGE, TRANS. OUTPUT	1
157.	C3TZ-7B229-A	THROTTLE BELLCRANK ASSEMBLY	1
158.	C2TZ-9784-C	THROTTLE ROD	1
159.	C4TZ-7Z-187-C	THROTTLE-TRANS. ROD	1
160.	C4TZ-7A-259-A	LEVER, TRANS.	1
161.	B7Q-6028-A	SUPPORT BRACKET, FWD MOTOR MT.	1
162.	B8TZ-6038-A	INSULATOR, FWD MOTOR MOUNT, UPPER	1

ITEM	PART	DESCRIPTION	QTY
163.	B8TZ-6039-A	INSULATOR, FWD MOTOR MOUNT, LOWER	1
164.	DOHZ-6750-A	OIL LEVEL INDICATOR (DIPSTICK)	1
165.	B8QH-6754-B	TUBE ASSEMBLY (DIPSTICK)	1
166.	C2TZ-7A020-A	FLUID LEVEL INDICATOR (TRANS. DIPSTICK)	1
167.	DIHZ-7A228-A	TUBE ASSY, TRANS.	1
168.	CITZ-7A229-A	BRACKET, TRANS. TUBE	1
169.	DOTZ-8509-B	PULLEY, WATER PUMP	1
170.	DOHZ-8546-F	FAN SPACER	1
171.	2056830	IDLER PULLEY	1
172.	353862-58	CLIP	1
173.	4155970	PULLEY, AIR COMP. MODIFIED	1
174.	G 425-6	CNG CARBURETOR KIT	1
175.	8268	BELT, "V"	1
176.	COAF-12043-A	COIL STRAP	1
177.	4155430	PULLEY, POWER STEERING PUMP DRIVER	1
178.		BOLT, HEX HD, 3/8-16 x 2-1/2 LG. GRADE 8	4
179.	C7TZ-12298-A	COIL WIRE, (HIGH TENSION)	1
180.		BOLT, HEX HD., 5/8-11 x 1-1/4 LG.	2
181.		NUT, HEX, 5/8-11	2
182.	-4156450	REBOUND SPACER L.H.	1
183.	-4156450	REBOUND SPACER R.H.	1
184.			
185.	1610-BL	GREASE FITTING, 1/8 NPT,	2
186.	1911-BI	GREASE FITTING, 90°EL, 1/4-28	2



FORD
IMPCO
GATES

FORD

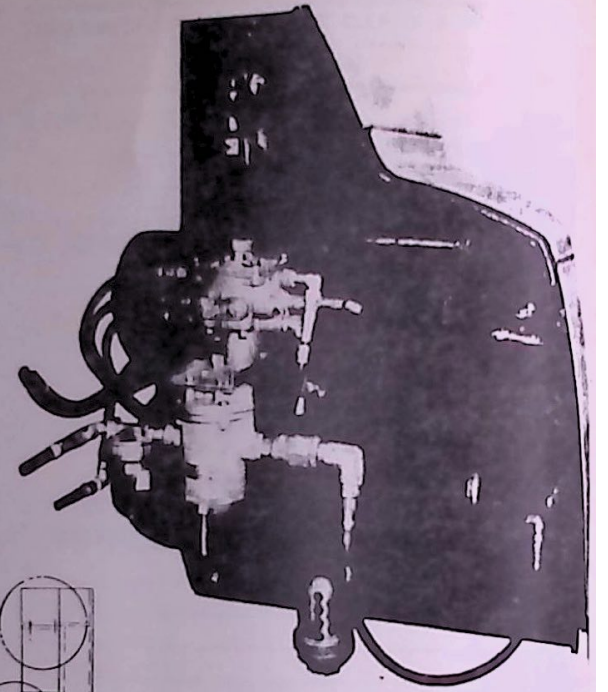
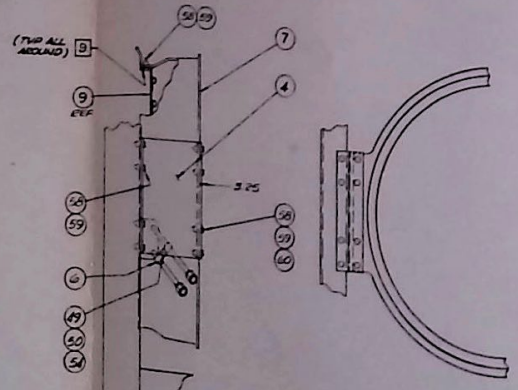
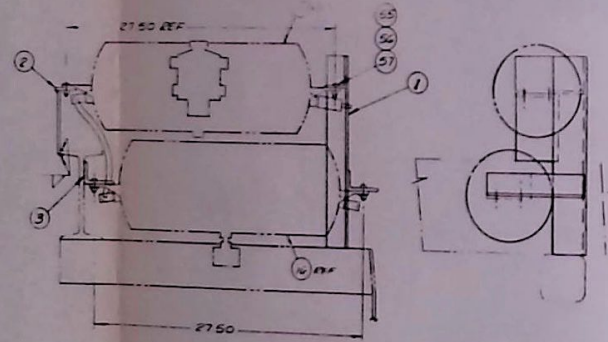
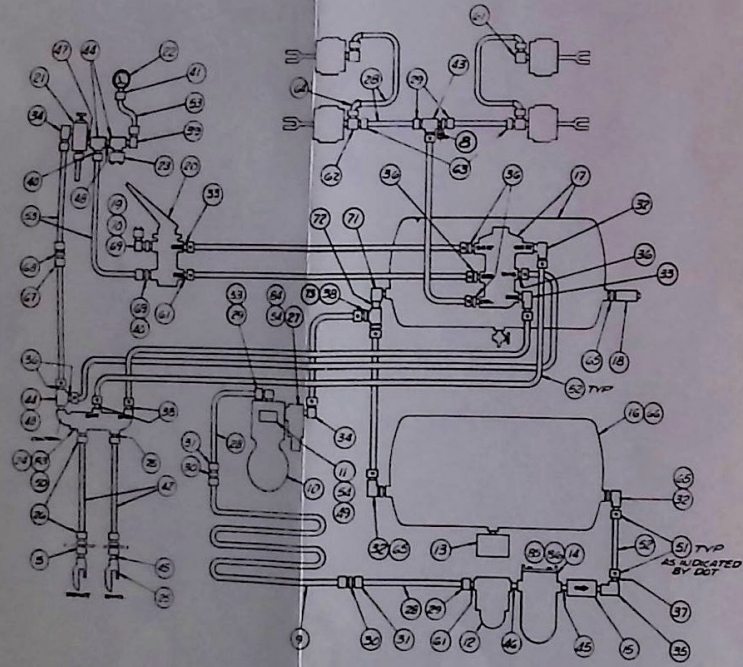
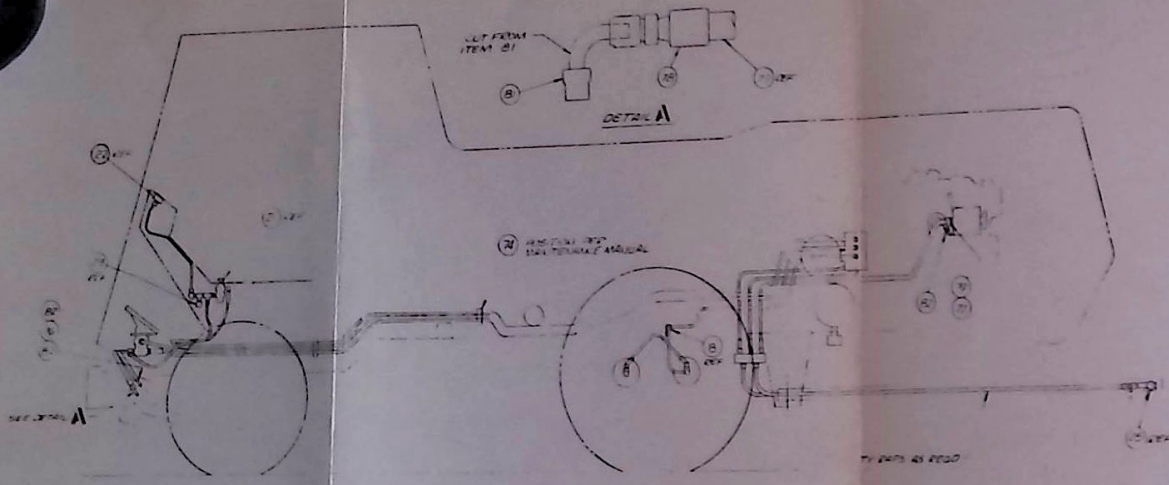
ALEMITE
ALEMITE

DWG 2990-415544 ASSEMBLY, ENGINE-EXHAUST, OIL COOLING, AIR CLEANER & RADIATOR SYSTEM

ITEM	PART	DESCRIPTION	QTY
1.	2056780	EXHAUST STACK L.H.	1
2.	2056770	EXHAUST STACK R.H.	1
3.	4155370	BRACKET, MUFFLER REAR	2
4.	4155390	HEADER PIPE, L.H.	1
5.	4155400	HEADER PIPE, R.H.	1
6.	4155420	ADAPTER, HEADER PIPE	2
7.	4155850	BRACKET, EXHAUST STACK	2
8.	4155800	AIR BOX	1
9.	B9J-9601A	AIR CLEANER	FORD 1
10.	2056990	PIPE, LOWER, RADIATOR	1
11.	2056800	FILLER TEE	1
12.	DOHZ-8260-S	HOSE	FORD 1
13.	11224-S	OIL COOLER	HAYDEN 1
14.	SEE DETAIL	BRACKET, COOLER SUPPORT	2
15.	C1TT-8286-N	HOSE	FORD 2
16.		CLAMP, EXHAUST MANIFOLD	2
17.	C3TZ-5C211-A	RING, GASKET, EXHAUST	2
18.	58637-S2	BOLT	6
19.	351385-S	WASHER, FLAT	12
20.	34987-S4	LOCKNUT	FORD 6
21.	UC-300	CLAMP, "U", MUFFLER	MERCURY TUBE 6
22.	MS35140-18	CLAMP, SUPPORT	A/R
23.		HOSE, 1" I.D. RUBBER	A/R
24.	B8QH-8291-A	PIPE	FORD 1
25.	C1TT-8286-V	HOSE	FORD 1
26.	4376	HOSE, 5/8 I.D.	GATES A/R
27.	2056760	ASSEMBLY, MUFFLER L.H.	1
28.	2056750	ASSEMBLY, MUFFLER R.H.	1
29.	GEN. PURPOSE TYPE A	HOSE, 4" I.D. X 60" LG	FLEX HAUST 1
30.	3/4 O.D. X .035 W	TUBE, REFRIG., COPPER	A/R
31.	MD630BS	RIVET, POP	4
32.	12-16FBTX-B	CONNECTOR, MALE	PARKER 2
33.	5/16 DIA	WASHER, SPLIT LOCK	4
34.	1/2-13 X 5.0 LG	BOLT, HEX HD	4
35.	5/16-18 X .75 LG	BOLT, HEX HD	4
36.	10010B-108	NIPPLE, MALE	WEATHERHEAD 2
37.	3/4 CD-S	ELBOW, STREET	PARKER 1
38.	3/4 N.P.T.	NUT, TRU-SEAL	2
39.	3/4 X 2" LG	NIPPLE, PIPE ONE END THREADED ONLY	1
40.	2 1/4 I.D. X 5 1/2 LG	HOSE, RADIATOR	1
41.	3/8-16 X 1 1/2 LG	SCREW, HEX HD	9

DWG 2990-415544 ASSEMBLY, ENGINE-EXHAUST, OIL COOLING, AIR CLEANER & RADIATOR SYSTEM

ITEM	PART	DESCRIPTION	QTY
42.	3/8	WASHER, LOCK	13
43.	5-5264	CLAMP	4
44.	5-5210	CLAMP	4
45.	5-5248	CLAMP	9
46.	SEE DETAIL	BRACKET, SUPPORT	2
47.	1" X .04 THK X 17.75 LG	STRAP	1
48.	4156110	ADAPTER, AIR CLEANER HOSE	1
49.	12-VPX-B	CONNECTOR, MALE 45°	2
50.	3/4-12-30682-4	NIPPLE, HOSE	4
51.	12-HBTX-B	UNION	2
52.	831-12	HOSE	A/R
53.	SP-9	CAP, RADIATOR	1
54.	NO. 600	COOLANT RECOVERY KIT	1
55.	3/8-16 NC	NUT, HEX	13
56.	7/16-14UNC X 1" LG	BOLT, HEX HD	4
57.	1/2-13 UNC	NUT, HEX	4
58.	3/8-16 X 3/4 LG	BOLT, HEX HD	4
59.	1/4-20 X 5/8 LG	BOLT, HEX HD	14
60.	7/16-14	NUT, HEX	2
61.	1/2-20 NF X 1 1/2 LG	BOLT HEX HD	8
62.	1/2-20 NF	NUT, HEX	8
63.	1/2	WASHER, LOCK	12
64.	5/16-18 NC	NUT, HEX	4
65.	2056310	SUPPORT, RADIATOR	1
66.	2056300	SUPPORT, RADIATOR	1
67.	8A-8115	DRAIN	1
68.	7/16	WASHER, SPLIT LOCK	4
69.	2056790	RADIATOR	1
70.	C4TZ-8146-D	SHROUD	1
71.	1/4-28NF X 3/4 LG	BOLT, HEX HD	10
72.	1/4-28 NF	LOCKNUT	10
73.	415614	HEAT GUARD, R.H.	1
74.	205623	HEAT GUARD, L.H.	1
75.	1/4	WASHER, FLAT	4
76.	4156560	BRACKET, RECOVERY TANK	1



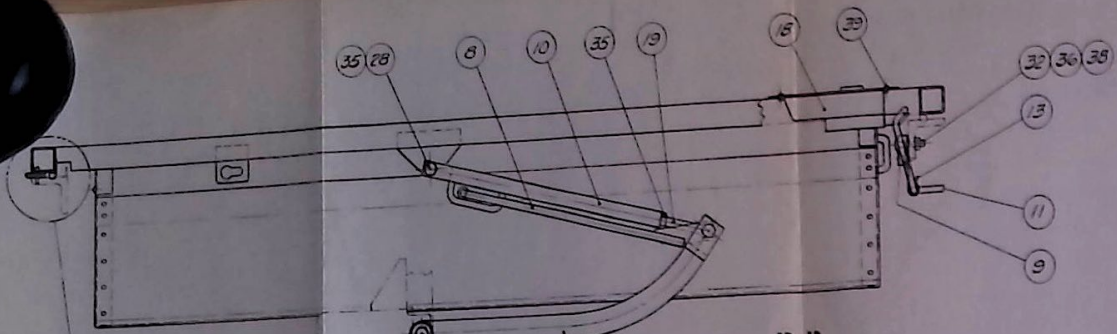
1. SOURCE: RALPH W. ATKINSON CO., INC. 213-5834311 OR MFG.: ARROW PNEUMATICS, INC., 1900 S. KOSTNER AVE., CHICAGO, ILL. 60623 312-2774116
2. SOURCE: BENDIX-HESTINGHOUSE
3. SOURCE: METROPOLITAN SUPPLY CO., 213-7239321 OR MFG.: PARKER-HANNIFIN CORP., 17215 EUCLID AVE., CLEVELAND, OHIO 44112
4. SOURCE: CONQUIP INC. 714-9861046 OR MFG.: STIMLEX-SAMUEL MOORE & CO., MANTUA, OHIO 44255.
5. ITEM 17 INCLUDES: 220510 RELAY EMER. VALVE
220743 RESERVOIR
215310 DRAIN COCK
6. ITEM 20 INCLUDES: 277843 BASIC VALVE
7. ITEM 21 INCLUDES: 243062 BUTTON
8. IN ADDITION TO ITEMS LISTED, THE FOLLOWING PARTS MAY BE REQ'D IF NOT SUPPLIED WITH ITEMS INDICATED:
PLUG, TAPER PIPE THD. HEX SOC.
D. USED WITH RELAY VALVE: 6 EA 1/4 NPT PLUGS
B. USED WITH AIR COMPRESSOR: 6 EA 3/8 NPT PLUGS; 1 EA 1/4 NPT PLUG
C. USED WITH BRAKE FOOT VALVE: 3 EA 1/2 NPT PLUGS; 1 EA 1/4 NPT PLUG
9. FILL SPACE WITH TWO THICKNESSES OF ARMO FOAM TAPE 1/4" x 1" OR EQUIVALENT

2530-415558
ASSEMBLY, AIR SYSTEM

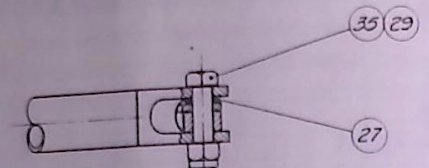
DETAIL-INTERCOOLER AT FAN RING

ITEM	PART	DESCRIPTION	QTY
1.	4155540	BRACKET, AIR TANK OUTER	1
2.	4155550	BRACKET, AIR TANK UPPER	1
3.	4155560	BRACKET, AIR TANK LOWER	1
4.	4156080	SUPPORT, FAN RING	2
5.	10WGTX	CONNECTOR, BULKHEAD PARKER-HANNIFIN	2
6.	MS21333-112	CLAMP, 1/2 DIA, LOOP, CUSHIONED	2
7.	4156060	FAN RING	1
8.	4156170	BRACKET, BRAKE TEE	1
9.	4156070	ASSEMBLY, INTERCOOLER PIPE	1
10.		ASSEMBLY, COMPRESSOR BENDIX-WESTINGHOUSE 8b	1
11.	237461	FITTING, AIR INLET BENDIX-WESTINGHOUSE	1
12.	3102F	FILTER, AIR LINE W/COTTON ELEMENT ARROW PNEUMATICS	1
13.	5100BG	DRAIN TRAP ARROW PNEUMATICS	1
14.	1/2 20 AG	FILTER ARROW PNEUMATICS	1
15.	227788	VALVE, CHECK BENDIX-WESTINGHOUSE	1
16.	228743	RESERVOIR	1
17.	228720	RESERVOIR-RELAY VALVE	1
18.	205105	VALVE, SAFETY	1
19.	226262	SWITCH, STOP LITE	1
20.	278997	VALVE, BRAKE FOOT	1
21.	279478	VALVE, PUSH-PULL CONTROL	1
22.	225636	GAUGE, PRESSURE	1
23.	228750	SWITCH, LOW PRESSURE	1
24.	227672	VALVE, TRACTOR PROTECTION	1
25.	220165	ASSEMBLY, COUPLER BENDIX-WESTINGHOUSE	2
26.	3903-08550	SWIVEL, FEMALE SYNFLEX-SAMUEL MOORE	4
27.	DOTZ-2885-A	GOVERNOR FORD	1
28.	3700-06	HOSE, PLASTIC, BLACK COVER SYNFLEX-SAMUEL MOORE	A/R
29.	3903-06546	SWIVEL, FEMALE " " "	4
30.	8HBTX-B	ELBOW, UNION PARKER HANNIFIN	2
31.	3903-06548	SWIVEL, FEMALE 37° SYNFLEX-SAMUEL MOORE	2
32.	6CCTX-B	ELBOW, MALE PARKER HANNIFIN	3
33.	6-8CTX-B	ELBOW, MALE	3
34.	4CBTX-B	ELBOW, MALE	2
35.	1/2DD-B	ELBOW, FEMALE	1
36.	6FTX-B	CONNECTOR, MALE	6
37.	6-8FTX-B	CONNECTOR, MALE	1
38.	6-6FTX-B	CONNECTOR, MALE	4
39.	4-4CBTX-B	ELBOW, MALE	1
40.	4-4FBTX-B	CONNECTOR, MALE	2
41.	4GBTX-B	CONNECTOR, FEMALE PARKER HANNIFIN	1
42.	3700-08	HOSE, PLASTIC, BLACK COVER SYNFLEX-SAMUEL MOORE	A/R

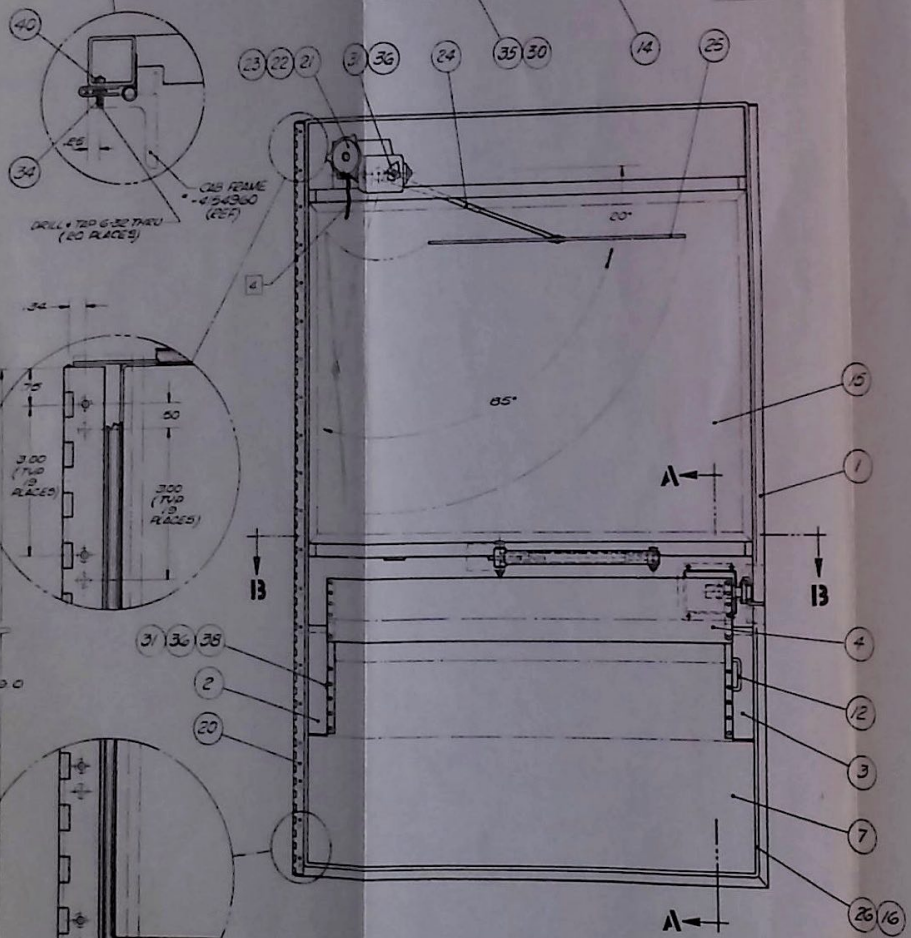
ITEM	PART	DESCRIPTION	QTY
43.	6WJTX-B	TEE, UNION BULKHEAD	1
44.	1/4-MMO-B	TEE	3
45.	1/2FF-B	NIPPLE	3
46.	1/2-1/4FF-B	NIPPLE	1
47.	1/4-1/8FF-B	NIPPLE	1
48.	1/4FF-B	NIPPLE	2
49.	5/16-18 X 1" LG	BOLT	3
50.	5/16-18	NUT, HEX, S.L.	3
51.	3903-04546	SWIVEL, FEMALE 37°	19
52.	3700-04	HOSE, PLASTIC, BLACK COVER	A/R
53.	1/4 OD	TUBING, SOFT COPPER, REFRIGERATION	A/R
54.	5/16	WASHER, FLAT	5
55.	3/8-16 X 3/4 LG	BOLT, HEX HD STL. CAD PL.	8
56.	3/8-16	NUT, HEX, CAD PL.	8
57.	3/8 (BOLT SIZE)	WASHER, FLAT, CAD PL.	8
58.	1/4-20 X 1" LG	BOLT, HEX	18
59.	1/4-20	NUT, HEX, S.L.	18
60.	W28X	WASHER, FENDER, 1/4	8
61.	6CTX-B	ELBOW, MALE 90°	4
62.	6RTX-B	MALE RUN TEE	2
63.	3903-06606	SWIVEL 37°, FEMALE 45°	2
64.	3903-06646	SWIVEL 37°, FEMALE 90°	4
65.	3/8 X 1/4 PTR-B	REDUCER, PIPE THREAD	3
66.	3/4 NPT	FEMALE PIPE CAP, BRASS	1
67.	3903-04544	SWIVEL, FEMALE 37°	1
68.	4HBTX-B	UNION	1
69.	1/2 X 1/4 PTR-B	REDUCER	1
70.	1/4CD-B	ELBOW, STREET	2
71.	3/8CD-B	ELBOW, STREET	1
72.	3/8FF-B	NIPPLE	1
73.	3/8MMO-B	TEE	1
74.	NAS1715C20N	CLAMP, LOOP, CUSHIONED, 1 1/4 DIA	6
75.	10 FTX	MALE CONNECTOR	2
76.	831-3/8	HOSE x 16'11" LG.	1
77.	201-6	HOSE x 16'4" LG.	1
78.	21120-6-6	REPAIR FITTING	1
79.	20820-6-6	STRAIGHT FITTING	1
80.	156-202	ELBOW, RETURN,	1
81.	U-214	ELBOW,	1
82.		HOSE CLAMP,	1
83.		BOLT, HEX HD., 5/16-18 x 3-1/2 LG.	2
84.		BOLT, HEX HD., 5/16-18 x 2-1/2 LG.	2



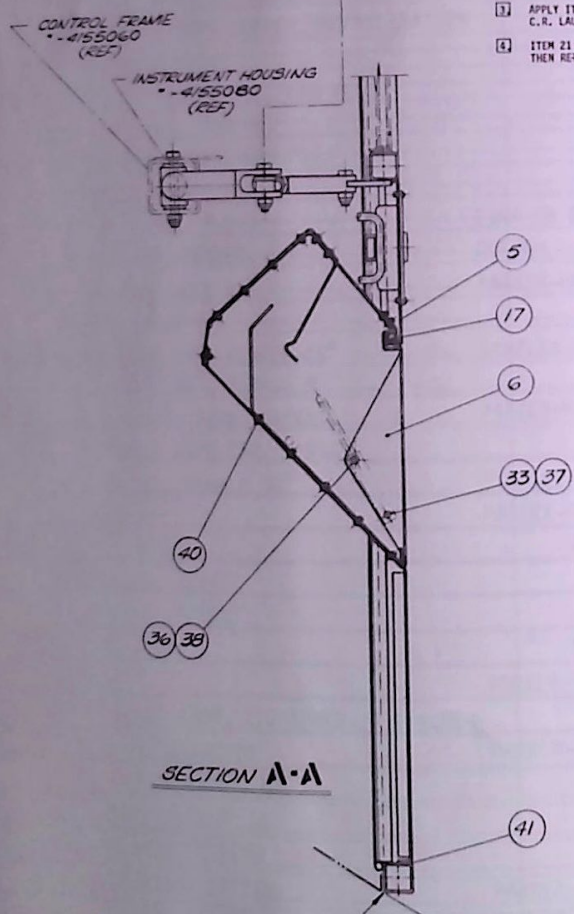
SECTION 13-13



1. (1) ASSEMBLY REQ'D PER TRACTOR.
2. ATTACH ITEMS #2, #3, #5 & #7 TO ITEM 1 TACK WELDS AT EDGE OF .50 FLANGES & IMATE 4.0" CENTERS.
3. APPLY ITEM #41 WITH 894 .30" DR. DIA. C.R. LAURENCE CO. INC. 720 S. WOOD, L.
4. ITEM 21 SHORTEN 3 WIRE LEAD TO 1/2" IN THEN RE TERMINAL ENDS.



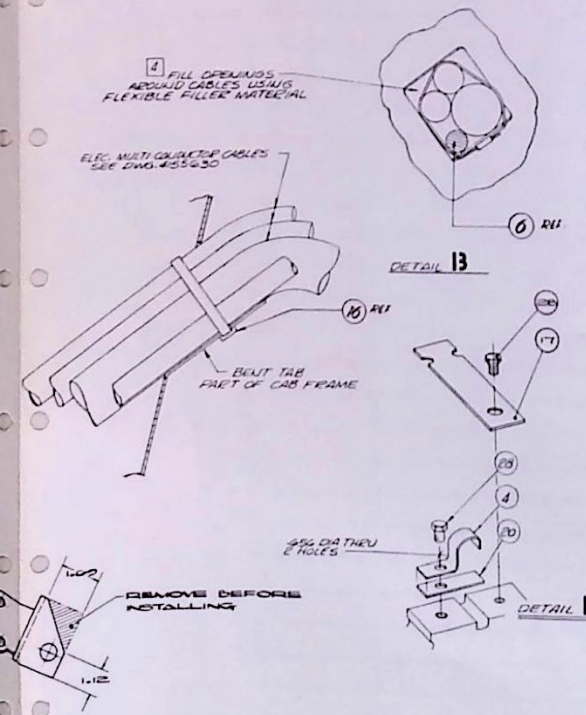
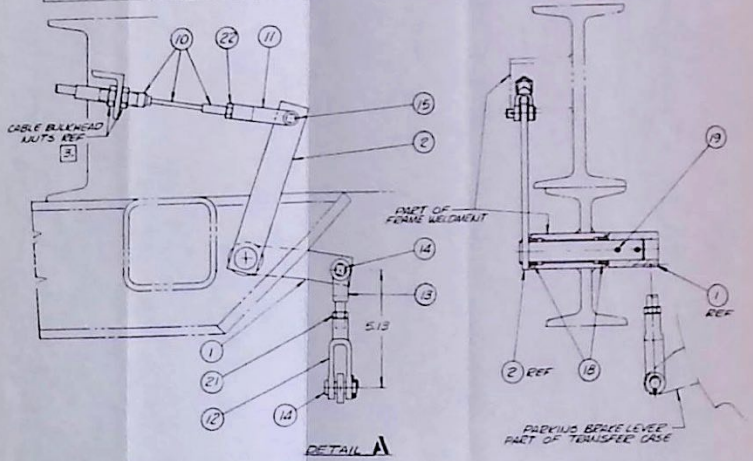
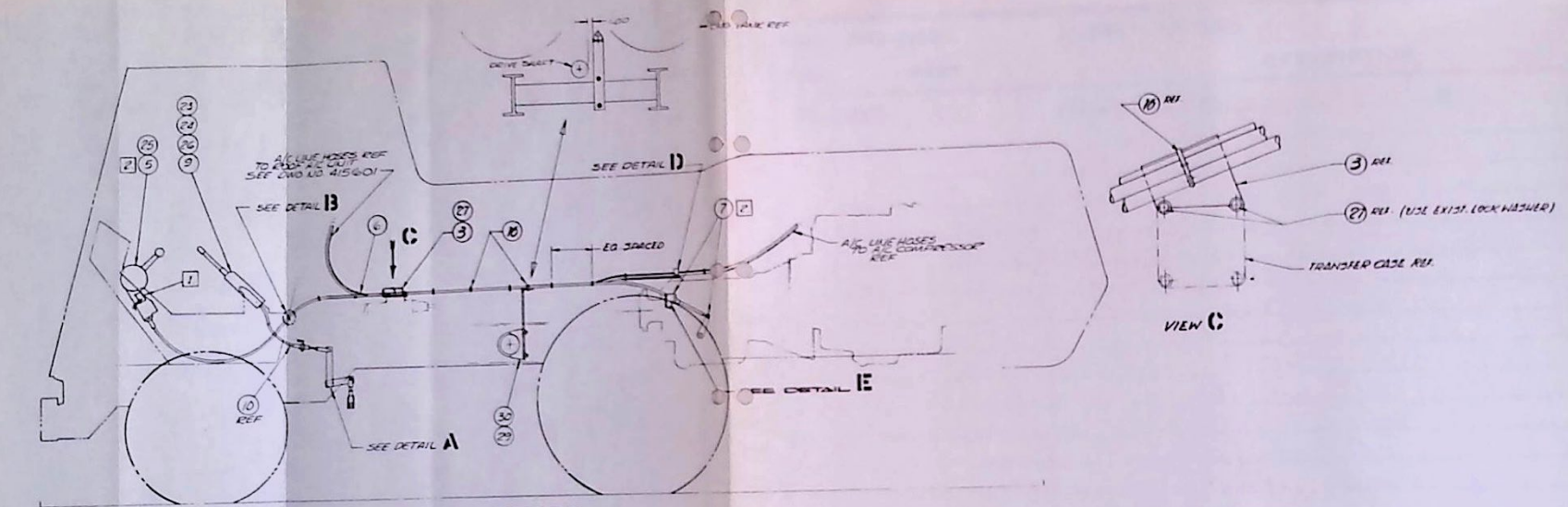
INSIDE OF DOOR



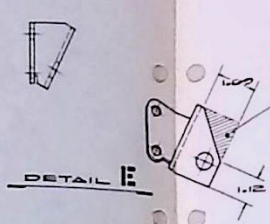
SECTION A-A

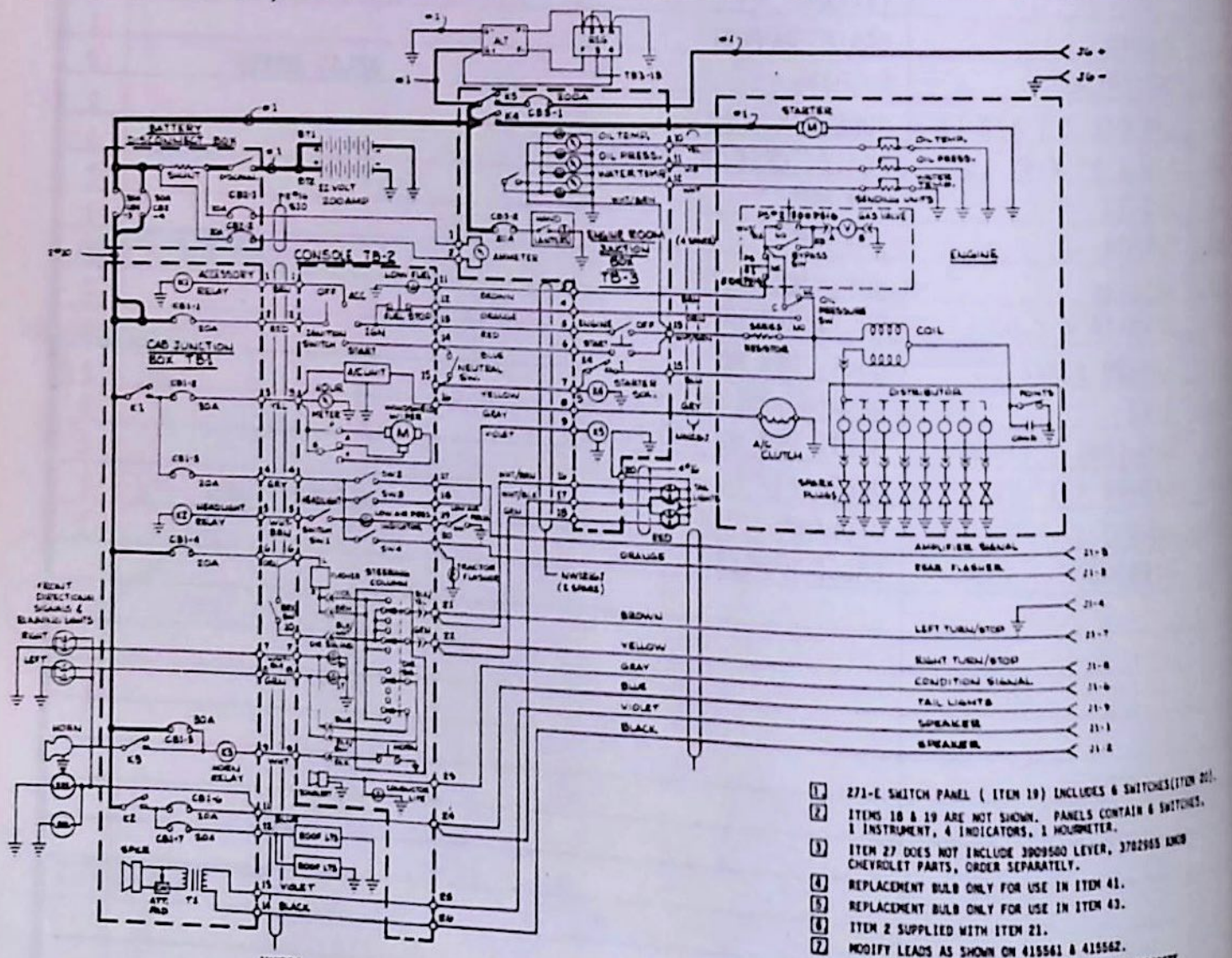
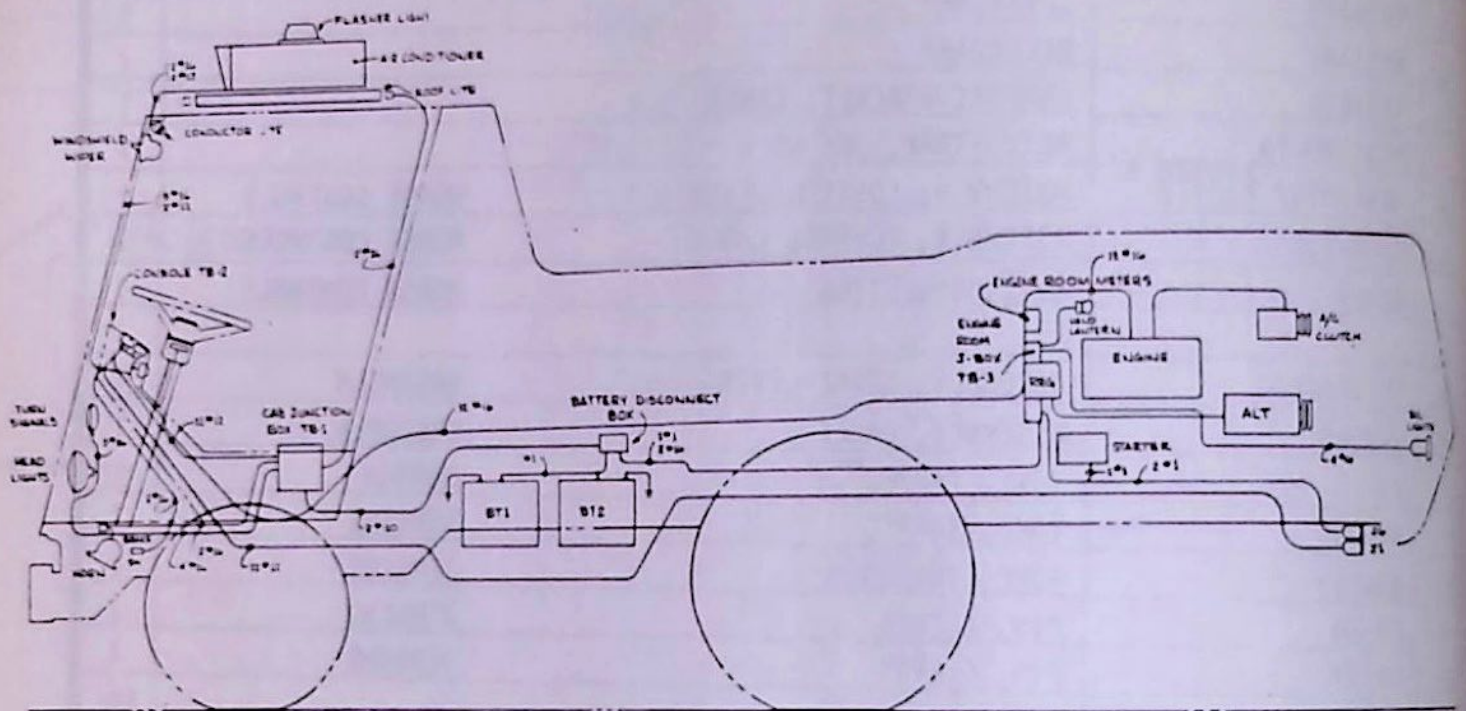
MOUNT DOOR FLUSH WITH BOTTOM OF CAB

ITEM	PART	DESCRIPTION	QTY
1.	4154970	DOOR FRAME	1
2.	4155100	AIR INTAKE, R.H. SIDES	1
3.	4155110	AIR INTAKE, L.H. SIDES	1
4.	4155120	AIR INTAKE, BACK	1
5.	4155130	AIR INTAKE, TOP	1
6.	4155140	LOUVER DOOR	1
7.	4155150	AIR INTAKE, BOTTOM	1
8.	4155210	HOLD OPEN ROD	1
9.	4155220	CLAMP, STRIKER	1
10.	4155230	LINK ROD	1
11.	4155260	STRIKER	1
12.	4155270	LOUVER DOOR LEVER	1
13.	4155280	STRIKER SPRING	1
14.	4155290	PULL BAR	1
15.	4155600	ASSEMBLY, DOOR GLASS	REF
16.		GREEN GRIP ROYALBOND GREEN GRIP	A/R
17.	1/4 X 3/4	FOAM TAPE ARNO	A/R
18.	4895	PADDLE LOCK, KEY LOCKING EBERHARD	1
19.	35305	ROD END JERGENS	1
20.	1.50 OPEN WIDTH X .040 THK X .090 PIN DIA	HINGE, CONTINUOUS SST	A/R
21.	WWC12-2612	ASSEMBLY, WINDSHIELD WIPER AMERICAN BOSCH	1
22.	LE721125A-1	DRIVE ARM AMERICAN BOSCH	1
23.	SH721042	PIVOT SHAFT AMERICAN BOSCH	1
24.	LE721142-16	WIPER ARM 16" NON-GLARE AMER. BOSCH OR ANCO	1
25.	BD721011-22	WIPER BLADE 22" STR AMER. BOSCH OR ANCO	1
26.	554X	WEATHERSTRIP RUBBERCRAFT	A/F
27.	AN6227B-7	"O" RING	1
28.	AN6-7A	BOLT	1
29.	AN6-12A	BOLT	1
30.	AN6-23A	BOLT	1
31.	AN520-416R6	SCREW	4
32.	1/4-28 X 11/16 Lg	BUTTON HD SOC CAD PLATE STEEL	2
33.	#10-32 X 5/16 LG	BUTTON HD CAD PLATE STEEL	1
34.	#6-32 X 1/4 LG	BINDER HEAD STAINLESS STEEL	20
35.	AN364-624	LOCK NUT	4
36.	AN364-428	LOCK NUT	7
37.	AN364-1032	LOCK NUT	1
38.	AN960-416L	WASHER	4
39.	MD-630-BS	RIVET, POP 3/16 MONEL	4
40.	MD-530-BS	RIVET, POP 5/32 MONEL	48



- 17 MORSE SWITCH B-45184 E. SEE ELEC. DWG. 4155630
SWITCH WIRING PREPARATION:
WIRE COLOR: WHITE: SPLICE TO EXISTING WIRES USING 16 GA. WIRES, LENGTH AS REQ'D., ENDING WITH RING TONGUE TERMINALS, T & B NO. RC10-10
GREEN: AS REQ'D., ENDING WITH RING TONGUE TERMINALS, T & B NO. RC10-10
BLACK: TAPE UP
RED :
- 22 INSTALLATION & ADJUSTMENT DETAIL: SEE INSTRUCTIONS SUPPLIED WITH KIT.
- 23 PARKING BRAKE ADJUSTMENT:
A. ADJUST BRAKE HANDLE KNOB (BY ROTATING) TO ACHIEVE MINIMUM (.25) STROKE CONDITION.
B. WITH LEVER HANDLE IN UP POSITION & WITH CLEVISSES ADJUSTED TO DIM. SHOWN... ADJUST CABLE BULKHEAD NUTS UNTIL BRAKE ENGAGES, LOCK ALL NUTS.
C. ADJUST HANDLE KNOB TO ACHIEVE DESIRED BRAKING CAPACITY.
- 41 ARCO AUTO GLAZING DUM-DUM C.R. LAURENCE CO., 720 S. MATED ST., L.A., CAL.

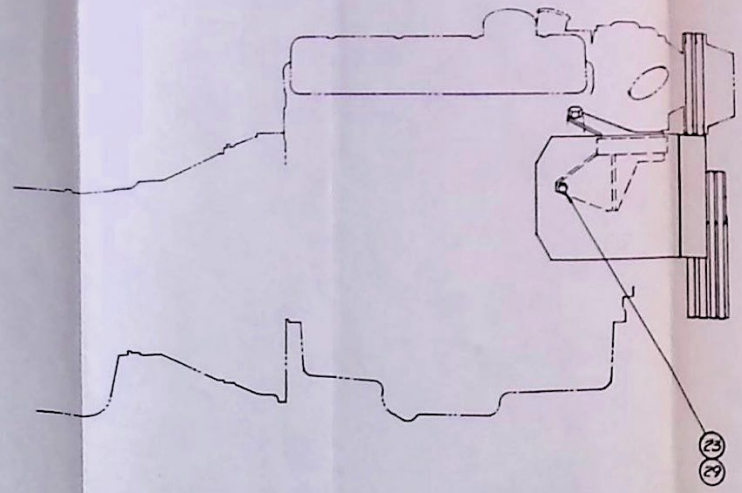
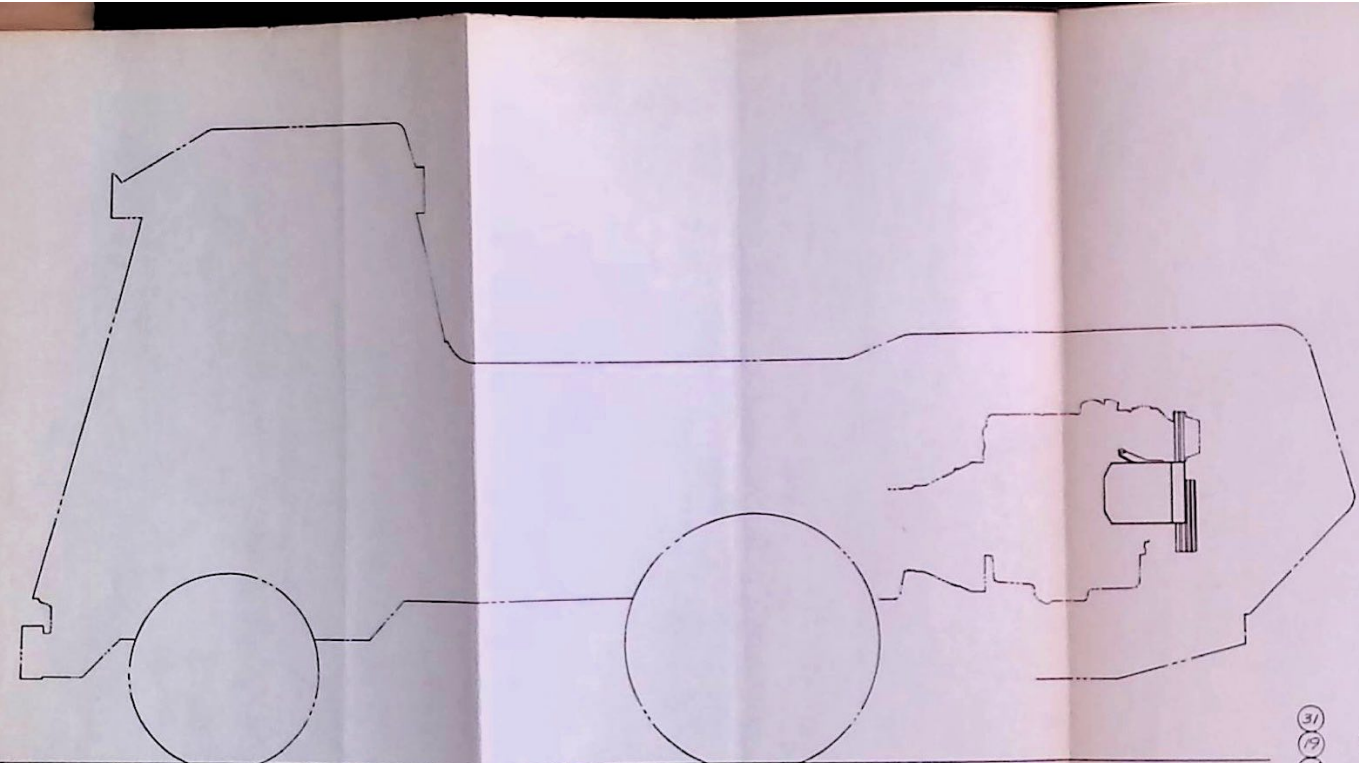




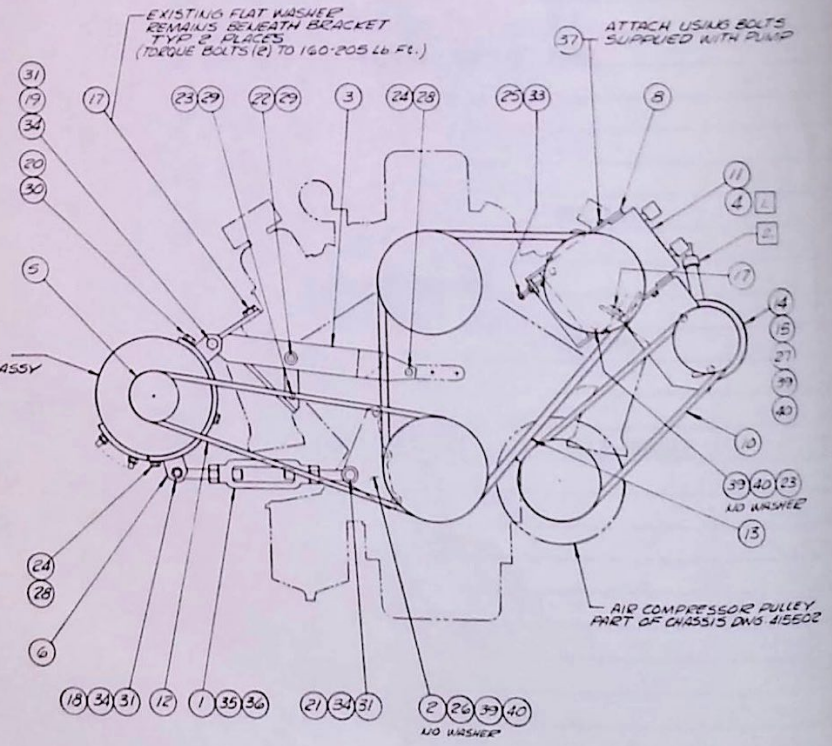
- 1 271-E SWITCH PANEL (ITEM 19) INCLUDES 6 SWITCHES (ITEM 21).
- 2 ITEMS 18 & 19 ARE NOT SHOWN. PANELS CONTAIN 6 SWITCHES, 1 INSTRUMENT, 4 INDICATORS, 1 HOURMETER.
- 3 ITEM 27 DOES NOT INCLUDE 3909500 LEVER, 3782965 KNOB CHEVROLET PARTS, ORDER SEPARATELY.
- 4 REPLACEMENT BULB ONLY FOR USE IN ITEM 41.
- 5 REPLACEMENT BULB ONLY FOR USE IN ITEM 43.
- 6 ITEM 2 SUPPLIED WITH ITEM 21.
- 7 MODIFY LEADS AS SHOWN ON 415561 & 415562.
8. UNLESS OTHERWISE NOTED INTERNAL WIRING OF DISCRETE UNITS SHALL BE OF COMPARABLE WIRE GAUGES TO THAT OF INCOMING WIRE CABLES.

ITEM	PART	DESCRIPTION	QTY
1.	415610	INSTALLATION, BATTERY	REF
2.		SHUNT	LEECE-NEVILLE 1
3.	2228A	ALTERNATOR	LEECE-NEVILLE 1
4.	R0015030A	REGULATOR	LEECE-NEVILLE 1
5.		STARTER	FORD 1
6.	24021	SOLENOID	COLE-HERSEE 1
7.		DISTRIBUTOR	FORD 1
8.	B6A-12029-B	COIL, IGNITION	FORD 1
9.	30037	RESISTOR, SERIES	COLE-HERSEE 1
10.	M-719	SWITCH, IGNITION	" " 1
11.	270-F	GAUGE, OIL PRESSURE	STEWART-WARNER 1
12.	270-J	GAUGE, OIL TEMP	1
13.	270-H	GAUGE, WATER TEMP	1
14.	334-N	SENDER, WATER TEMP	1
15.	353Z	SENDER, OIL PRESSURE	1
16.	280-ED	SENDER, OIL TEMP	1
17.	15000	HOUR METER	1
18.	271-A	PANEL, INSTRUMENT	1
19.	271-E	PANEL, SWITCH	1
20.		SWITCH	STEWART-WARNER 4
21.	470	AMMETER	LEECE-NEVILLE 1
22.	WL-3B	LAMP, INDICATOR	VILEM HAAN 2
23.	8-1310-0531-301	LAMP, SIGNAL	DIALCO 1
24.	DWG. 4155610	ASSEMBLY, WINDSHIELD WIPER	BOSCH 1
25.	75109	SWITCH, WINDSHIELD	COLE-HERSEE 1
26.	SC628	SONALERT	MALLORY 1
27.	1997965	SWITCH, DIRECTIONAL SIGNAL	DELCO-REMY 1
28.	3261	ASSEMBLY, LOW AIR PRESSURE LIGHT	COLE HERSEE 1
29.	32001	FLASHER, DIRECTIONAL SIGNAL	" " 1
30.	DWG. 4155580	SWITCH, LOW AIR	BENDIX-WESTINGHOUSE 1
31.	DWG. 4155580	SWITCH, BRAKE	" " 1
32.	DWG. 4155620	SWITCH, NEUTRAL	MORSE 1
33.	M-497	SWITCH, ENGINE ON-OFF	COLE-HERSEE 1
34.	603 WP/6SF	SPEAKER	MOBILPAGE 1
35.	C1B-8	ATTENUATOR PAD	CLAROSTAT 1
36.	15074	TRANSFORMER	PEERLESS 1
37.	6041H149A	RELAY	CUTLER-HAMMER 3
38.	S34H1+S34L0	HORN	SPARTON 1
39.	4412	BULB, HEADLAMP	GE, GUIDE, TUNGSOL 2
40.	77032/W.O.LENS LAMP	ASSEMBLY, HEADLAMP	GROTE 2
41.	4111LW.LENS 271-1	ASSEMBLY, TURNLAMP	" 4
42.	1157	BULB, TURNLAMP (SEE NOTE 4)	GE.GUIDE. TUNGSOL REF

ITEM	PART	DESCRIPTION		QTY
43.	037-03-312	FLASHER, ROOF (SEE NOTE 5)	ARROW SAFETY	1
44.		FLASHER, BULB	GE, GUIDE, TUNGSOL	REF
45.		ROOF LITE TUBE	BELDEN OR PACKARD	2
46.	6041H105A	TRAM LITE RELAY	CUTLER-HAMMER	1
47.	SB2-6313G8	PLUG	ANDERSON	1
48.	DWG. 4155690	RECEPTACLE	RUSSEL-STOLE	1
49.	7855-7-200	CIRCUIT BREAKER, 200 AMP	KLIXON	1
50.	86599CA	SWITCH, SPST 6A @ 125V	ARROW HART & HEGEMAN	1
51.	30056-30	CIRCUIT BREAKER, 30 AMP	COLE-HERSEE	4
52.	30056-20	CIRCUIT BREAKER, 20 AMP	↑ ↓	6
53.	30056-10	CIRCUIT BREAKER, 10 AMP		2
54.	M-626	SWITCH, STARTER		1
55.	M-284	SWITCH, MAIN DISCONNECT		1
56.	30090-3	BRACKET, CIRCUIT BREAKER		1
57.	30090-4	BRACKET, CIRCUIT BREAKER	COLE-HERSEE	1
58.	CR151D20130	BOARD, TERMINAL 30 POINT	G.E.	1
59.	CR151D20120	BOARD, TERMINAL 20 POINT	G.E.	2
60.	C1TT-9344-A	SWITCH, LOW OIL PRESSURE SAFETY	FORD	1
61.		CLAMP, CABLE		5
62.	1/4-20 X 2 3/4 LG	THREADED STOCK		2
63.	1/4-20	WINGNUT		2
64.		HAND LANTERN		1
65.	106012	ROOF LITE BALLAST	MOBILITE	2
66.		ROOF LITE RECEPTACLE		-
67.		AIR CONDITIONER FUSE HOLDER		1
68.	4155690	CABLE, TRAM CONNECTOR		1
69.	ASG15 X 12 X 4	BOX, JUNCTION	HOFFMAN	1
70.	A-1008LP	BOX, JUNCTION	"	1
71.	A12R126	BOX, JUNCTION	"	1
72.	30090-6	BRACKET, CIRCUIT BREAKER	COLE-HERSEE	1



ALTERNATOR
PART OF ELEC. ASSY
DWG 4155030



EXISTING FLAT WASHER
REMAINS BENEATH BRACKET
TYP. 2 PLACES
(TORQUE BOLTS (2) TO 160-205 LB Ft.)

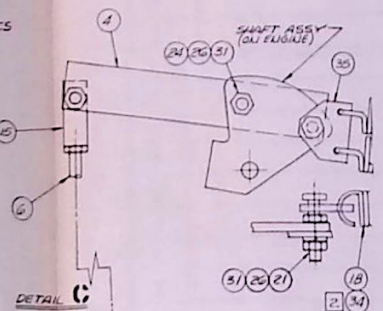
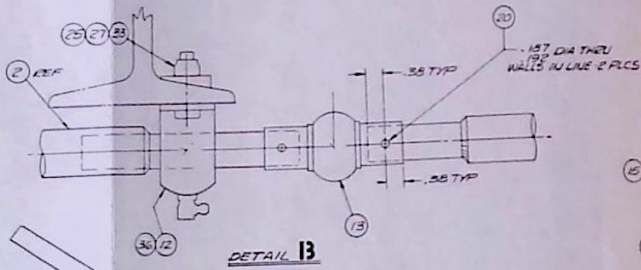
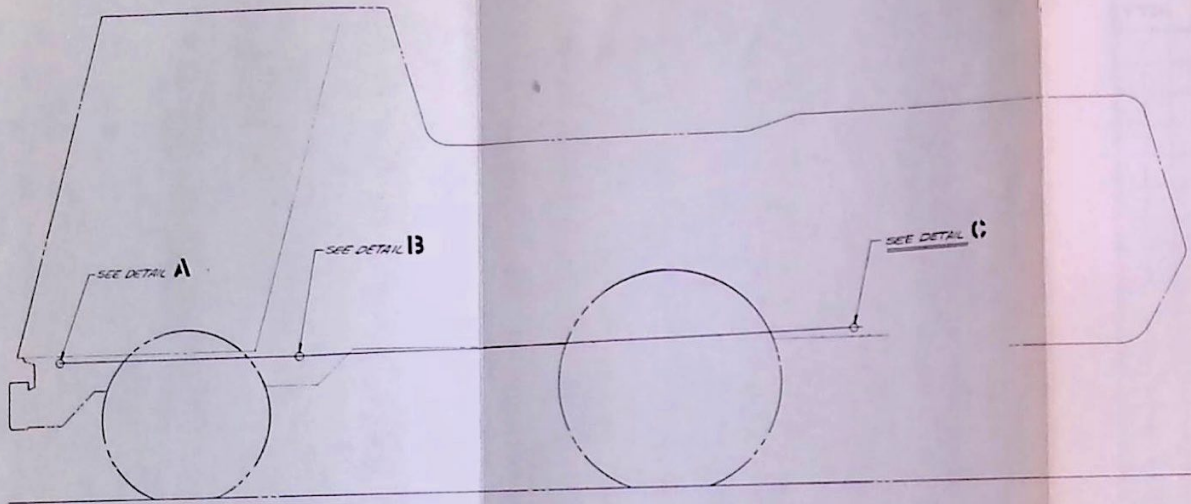
ATTACH USING BOLTS
SUPPLIED WITH PUMP

AIR COMPRESSOR PULLEY
PART OF CHASSIS DWG 415502

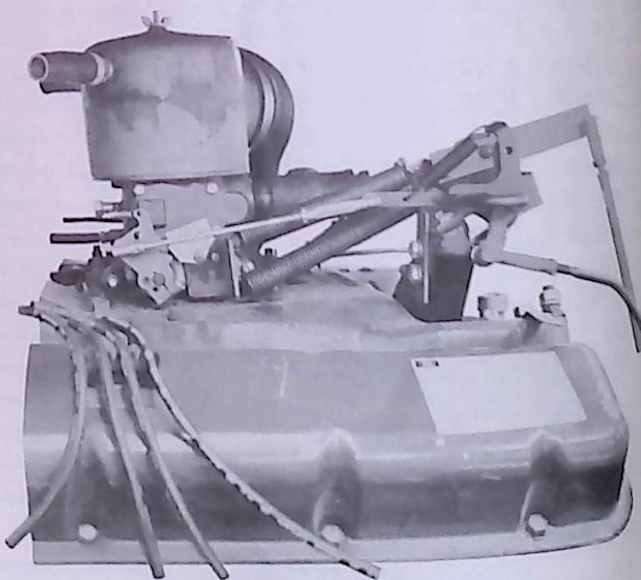
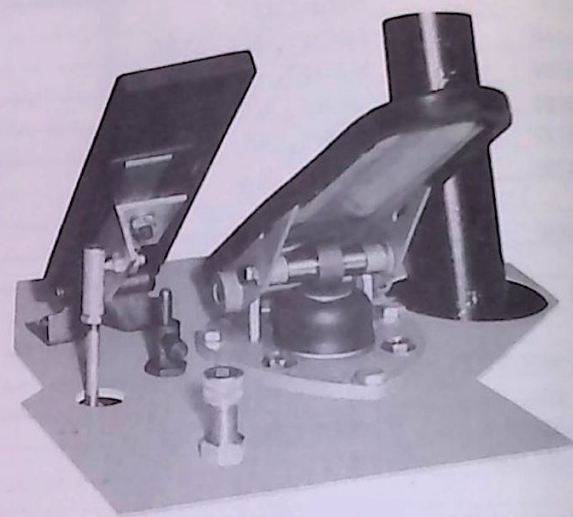
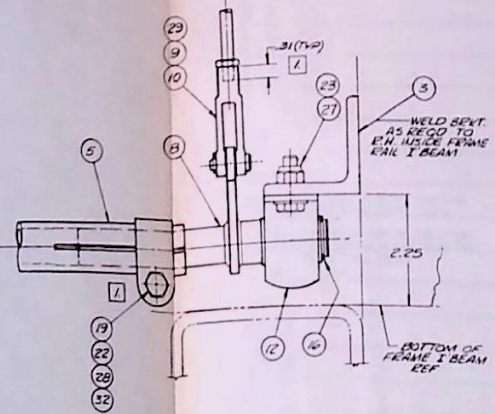
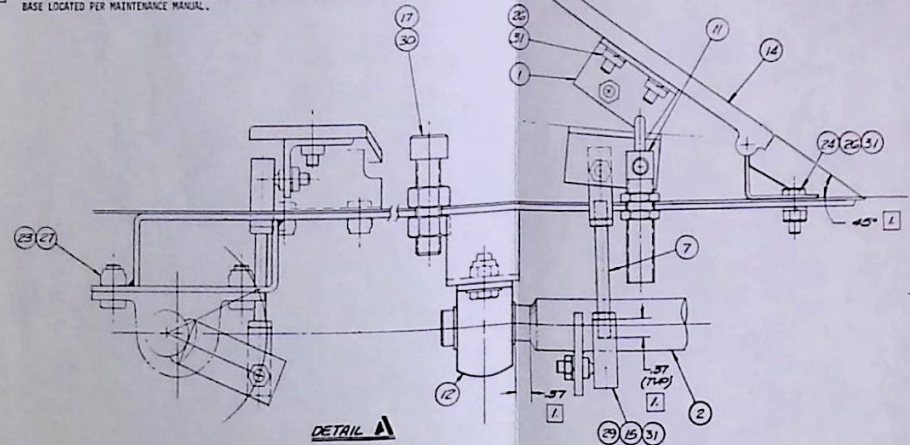
- 17 REPLACE EXISTING SHEAVE (SUPPLIED WITH PUMP) USING SHEAVE ITEM 4.
- 2 POWER STEERING PUMP OIL RESERVOIR (FILLER TUBE) MAY BE ROTATED AT ASSY TO APPROX. ANGLE SHOWN.

WG 2920-415579 ASSEMBLY, ALTERNATOR & AIR COND. & POWER STEERING PUMP

ITEM	PART	DESCRIPTION	QTY
1.	4155730	TURNBUCKLE	1
2.	4155740	BRACKET, ALT. STRUT	1
3.	4155750	BRACKET, ALT. HANGER	1
4.	4155760	SHEAVE, A/C PUMP	1
5.	4155770	SHEAVE, ALT.	1
6.	4155780	SADDLE, ALT.	1
7.			
8.	4155880	BRACKET, A/C PUMP	1
9.			
10.	8268	BELT, "V" DRIVE GATES	1
11.		A/C COMPRESSOR PUMP YORK	1
12.	8289 MATCHED PAIR	BELT, "V" DRIVE GATES	1
13.	C9P2 8620 GE	BELT, "V" DRIVE FORD	1
14.	DOVY-3A67A-B	POWER STEERING PUMP FORD	1
15.	C7AZ-3A733-E	PULLEY FORD	1
16.			
17.	5/8-11 X 4 3/4 LG	BOLT, GRADE 8	2
18.	5/8-11 X 3 1/4 LG	BOLT, HEX HD	2
19.	5/8-11 X 7" LG	BOLT, HEX HD	1
20.	1/2-13 X 1" LG	BOLT, HEX HD	2
21.	5/8-11 X 3" LG	BOLT, HEX HD	1
22.	7/16-14 X 4 1/2 LG	BOLT, HEX HD	1
23.	7/16-14 X 1" LG	BOLT, HEX HD	4
24.	3/8-16 X 1" LG	BOLT, HEX HD	5
25.	3/8-16 X 2" LG	BOLT, HEX, FULLY THD'D	1
26.	3/8-16 X 1.75 LG	BOLT, HEX	3
27.	3/8-16 X .75 LG	BOLT, HEX	2
28.	3/8	WASHER, SPLIT LOCK	5
29.	7/16	WASHER, SPLIT LOCK	3
30.	1/2	WASHER, SPLIT LOCK	2
31.	5/8	WASHER, SPLIT LOCK	3
32.			
33.	3/8-16	NUT	1
34.	5/8-11	NUT	3
35.	3/4-10	NUT, JAM, R.H. THD.	1
36.	3/4-10	NUT, JAM, L.H. THD.	1
37.	3/8	WASHER, FLAT	6
38.			
39.		LOCQUIC ACTIVATOR	A/R
40.		SCREW LOCK	A/R



- 17 THROTTLE LINKAGE ADJUSTMENT**
- ADJUST LINKAGE ROD ENDS TO DIMENSIONS SHOWN.
 - SET ENGINE-TRANS THROTTLE LINKAGE PER MAINTENANCE MANUAL VOLUME 1.
 - LOOSEN CLAMP (ITEM 19).
 - HOLD ACCELERATOR PEDAL AT ANGLE INDICATED.
 - HOLD ENGINE THROTTLE LINKAGE AGAINST ENGINE IDLE STOP.
 - ADJUST LINKAGE TORQUE ROD FORE & AFT LOCATION TO DIMENSION SHOWN.
 - TIGHTEN CLAMP.
 - ADJUST ANGULAR LOCATION OF AFT PUSH ROD IN YOKE (ITEM 10) TO ACHIEVE FREE OPERATION OF PUSH ROD PRIOR TO TIGHTENING JAM NUT.
- 18** INSTALL ITEM 34, NOT SHOWN, USING EXISTING SCREWS IN CARBURETOR BASE LOCATED PER MAINTENANCE MANUAL.



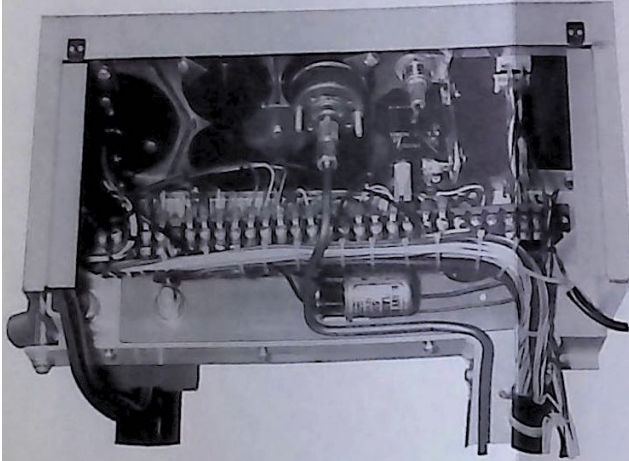
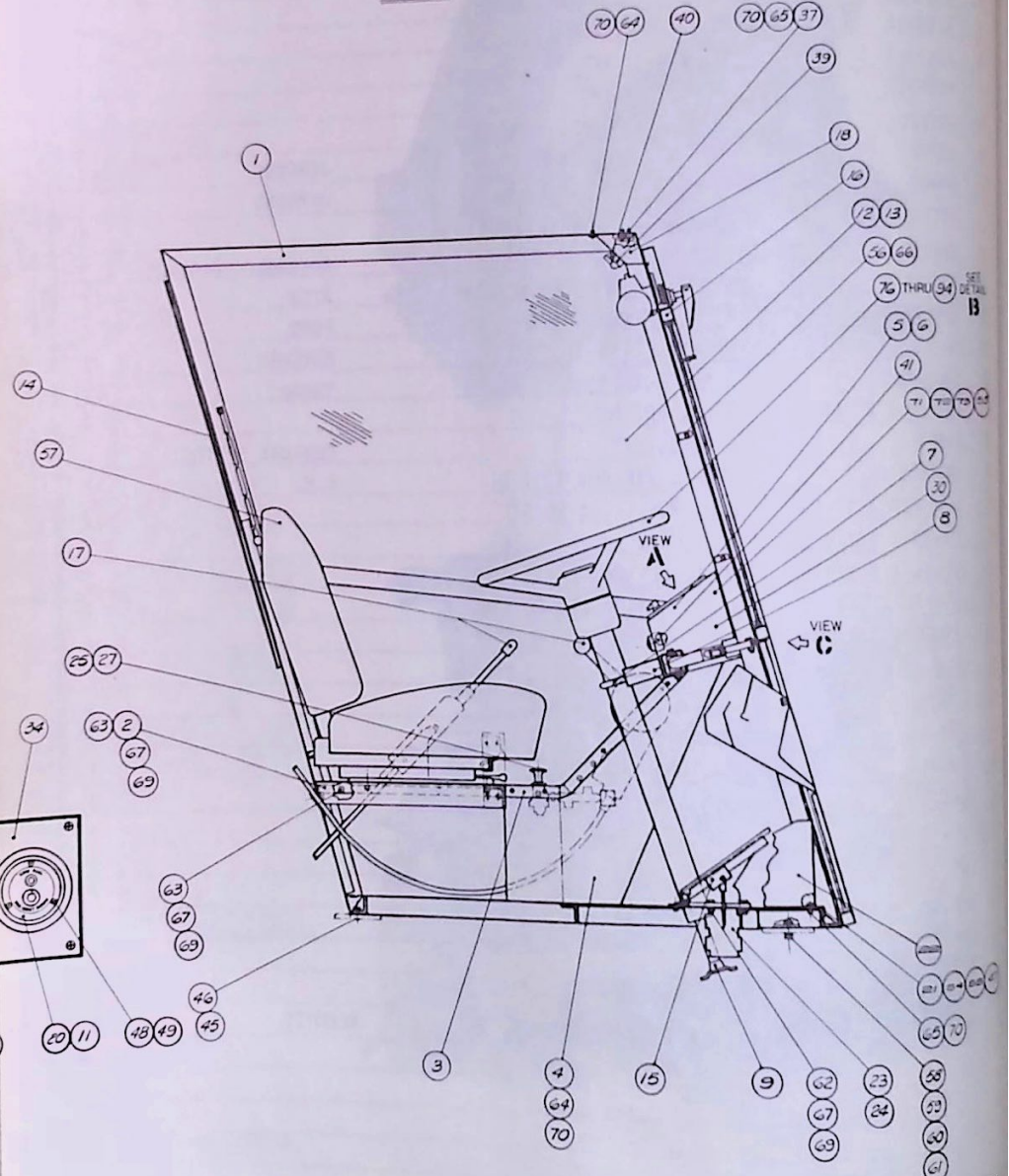
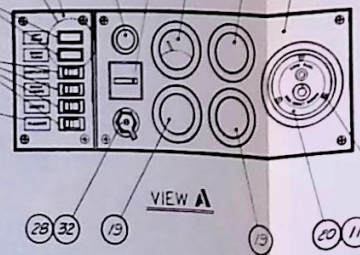
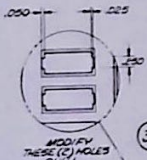
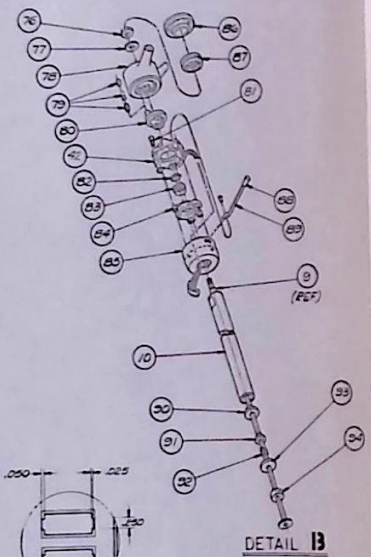
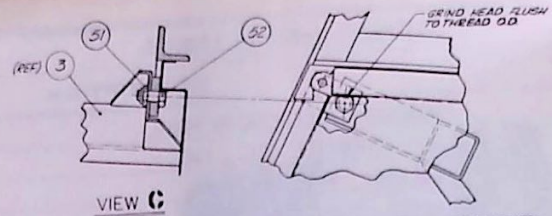
NG 2590-415595

ASSEMBLY, THROTTLE LINKAGE

EM	PART	DESCRIPTION	QTY
1.	4155480	BRACKET, ACCELERATOR PEDAL	1
2.	4155490	ROD, THROTTLE ACT., FWD.	1
3.	4155890	BRACKET, THROTTLE SHAFT	1
4.	4155900	LEVER, THROTTLE CONTROL	1
5.	4155910	ROD, THROTTLE ACT., AFT	1
6.	4155920	PUSH ROD, AFT	1
7.	4155930	PUSH ROD, FWD	1
8.	205629	LEVER, THROTTLE ROD, AFT	1
9.	32702	PIN, CLEVIS	JERGENS 1
10.	45502	YOKE	JERGENS 1
11.	CITT-9A858-A	DETENT CYL., DOWNSHIFT	1
12.	BBH12G	PILLOW BLOCK	TRIANGLE BEARINGS 3
13.	300-14-B	U-JOINT .75 BORE, NO KEY	APEX 1
14.	DOHZ9735-A	PEDAL, ACCELERATOR	FORD 1
15.	BJ-51	ROD END, 1/4-28	EDELMAN 3
16.	5100-75	RING, RETAINING	TRUARC 1
17.	1/2-20 X 2" LG	BOLT, SOC HD	1
18.	S-605	SPRING, EXT.	CENTURY SPRING 2
19.	7807288	CLAMP, TIE ROD 1" I.D.	G.M. 1
20.	3/16 DIA X 1" LG	PIN, ROLL, CAD PL STL	2
21.	1/4-20 X 1 1/4 LG	BOLT, HEX HD	1
22.	3/8-16 X 1 3/4 LG	BOLT, HEX HD	1
23.	5/16-18 X 3/4 LG	BOLT, HEX HD CAD PL STL	4
24.	1/4-20 X 3/4 LG	BOLT, HEX HD CAD PL STL	4
25.	5/16-18 X 1 1/4 LG	BOLT, HEX HD CAD PL STL	2
26.	1/4-20	NUT, HEX CAD PL STL	8
27.	5/16-18	NUT, S.L. CAD PL STL	6
28.	3/8-16	NUT, HEX CAD PL STL	1
29.	1/4-28	NUT, JAM CAD PL STL	8
30.	1/2-20	NUT, HEX	2
31.	1/4	WASHER, SPLIT LOCK	9
32.	3/8	WASHER, SPLIT LOCK	1
33.	3/8	WASHER, TAPERED	2
34.	2056220	ANCHOR	1
35.	2056210	LUG, SPRING	1
36.	1911-B1	GREASE FITTING, 1/4-28 90°	ALEMITE 1

1 THE PART NUMBER GIVEN FOR ITEMS 23 THRU 42 ARE REFERRING TO THE PARTS LIST ITEM NUMBERS AS THEY APPEAR ON THE DRAWINGS SPECIFIED.
 EXAMPLE: - 4155980-10
 DRAWING ITEM NO

- 2 DRILL .1927, 196 DIA THRU ITEM 1 & 54, INSTALL ITEM 55.
- 3 BOND ITEM 54 TO FLOOR WITH ITEM 47.
- 4 CHEVROLET PARTS.



ITEM	PART	DESCRIPTION	QTY
1.	4154960	FRAME, CAB	1
2.	4155010	MOUNT, SEAT	2
3.	4155060	FRAME, CONTROL	1
4.	4155070	COVER	1
5.	4155080	HOUSING, INSTRUMENT	1
6.	4155090	DOOR	1
7.	4155240	U-BOLT	1
8.	4155250	SPACER	1
9.	4155300	SHAFT, MODIFIED	1
10.	4155310	TUBE, MODIFIED	1
11.	3835-1056910	SYSTEM, PRESSURE MONITORING	1
12.	4155460	ASSEMBLY, CAB SIDE WINDOW R.H.	1
13.	4155470	ASSEMBLY, CAB SIDE WINDOW L.H.	1
14.	4155570	ASSEMBLY, REAR WINDOW	1
15.	4155950	ASSEMBLY, THROTTLE LINKAGE	REF
16.	4155610	ASSEMBLY, CAB DOOR	1
17.	4155620	ASSEMBLY, CONTROL CABLE	REF
18.	4155840	COVER, TERMINAL BOARD	1
19.	2056870	BLANK, PANEL	3
20.	4155700	RING, METER	1
21.	4156030	NOSING, THRESHOLD	1
22.	4156190	GUARD, PEDAL	
23.	4155580-19	SWITCH, STOP LITE	1
24.	4155580-20	VALVE, BRAKE FOOT	1
25.	4155580-21	VALVE, PUSH-PULL CONTROL	1
26.	4155580-22	GAUGE, PRESSURE	1
27.	4155580-23	SWITCH, LOW PRESSURE	1
28.	2056250	SPACER, IGNITION SWITCH	1
29.			
30.	4155630-29	FLASHER, DIRECTIONAL SIGNAL	1
31.	4155630-28	ASSEMBLY, LOW AIR PRESSURE LIGHT	1
32.	4155630-10	SWITCH, IGNITION	1
33.	4155630-17	METER, HOUR	1
34.	4155630-18	PANEL, INSTRUMENT	1
35.	4155630-19	PANEL, SWITCH	1
36.	4155630-20	SWITCH	4
37.	4155630-60	BOARD, TERMINAL	1
38.	4155630-22	INDICATOR, LAMP	2
39.	4155630-23	LAMP, SIGNAL	1
40.	4155630-25	SWITCH, WINDSHIELD WIPER	1
41.	4155630-26	SONALERT	1
42.	4155630-27	SWITCH, DIRECTIONAL SIGNAL	1

ITEM	PART	DESCRIPTION	QTY
43.			
44.			
45.	7/16	LOCKWASHER, CAD PLATE STEEL	2
46.	7/16-14 X 1"	BOLT, HEX HD, CAD PLATE STEEL	2
47.		GREEN GRIP ROYAL	A/R
48.	4-40 X 1/2	SCREW, ROUND HD RECESSED, CAD PLATE STEEL	3
49.	4-40	LOCKNUT, HEX, CAD PLATE STEEL	3
50.		LABEL SET DYMO	6
51.	AN364-820	LOCKNUT	1
52.	AN8-6A	BOLT (MODIFIED AS SHOWN)	1
53.	07-10-101-12	DRAW CATCH SOUTHCO	2
54.		RUB-BUB CROWN COACH	A/R
55.	MK665BS	RIVET USM	8
56.	732	CABLE CLAMP BIRNBACH	3
57.	29910-3	SEAT, THINLINE BUCKET BOSTROM	1
58.	1/2-13 X 1 1/2	BOLT, HEX HD, CAD PLATE STEEL	2
59.	1/2	WASHER, TAPERED, CAD PLATE STEEL	2
60.	1/2-13	NUT, HEX, CAD PLATE STEEL	2
61.	1/2	LOCKWASHER, CAD PLATE STEEL	2
62.	5/16-18 X 1"	BOLT, HEX HD, CAD PLATE STEEL	3
63.	5/16-18 X 5/8	BOLT, HEX HD, CAD PLATE STEEL	11
64.	#10-32 X 3/8	SCREW, CAD PLATE STEEL	6
65.	#10-32 X 5/8	SCREW, CAD PLATE STEEL	10
66.	#6-32 X 3/8	SCREW, CAD PLATE STEEL	3
67.	5/16-18	NUT, HEX, CAD PLATE STEEL	14
68.	#10-32	NUT, HEX, CAD PLATE STEEL	2
69.	5/16	LOCKWASHER, CAD PLATE STEEL	14
70.	#10	LOCKWASHER, CAD PLATE STEEL	16
71.	#2-56 X 3/8	SCREW, FLAT HD, CAD PLATE STEEL	8
72.	#2	LOCKWASHER, CAD PLATE STEEL	8
73.	#2-56	NUT, HEX, CAD PLATE STEEL	8
74.			
75.			
76.	124934	NUT	1
77.	3954735	WASHER	1
78.	7949596	ASSEMBLY, WHEEL	1
79.	3916047	SPRING, EYELET & INSULATOR	1
80.	3929611	ASSEMBLY, CAM	1
81.	3902188	SCREW	3
82.	580074	RING, SNAP	1
83.	5955201	BEARING, UPPER	1
84.	3918434	SWITCH SUPPORT	1

CHEVROLET

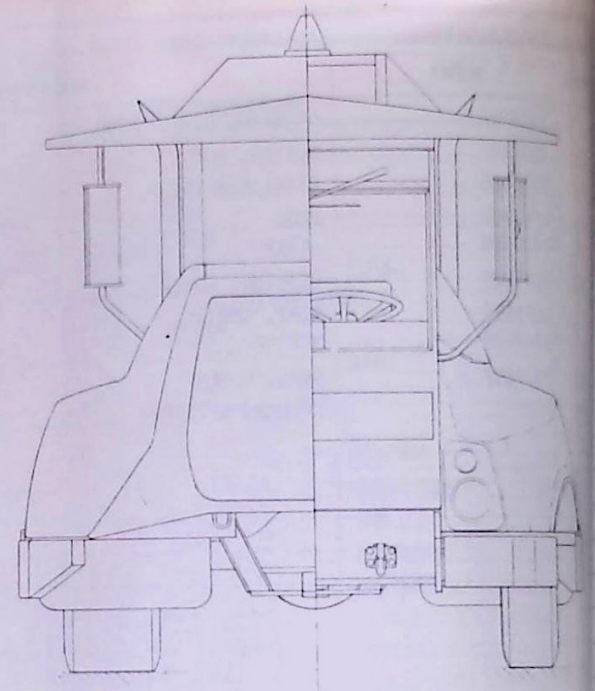
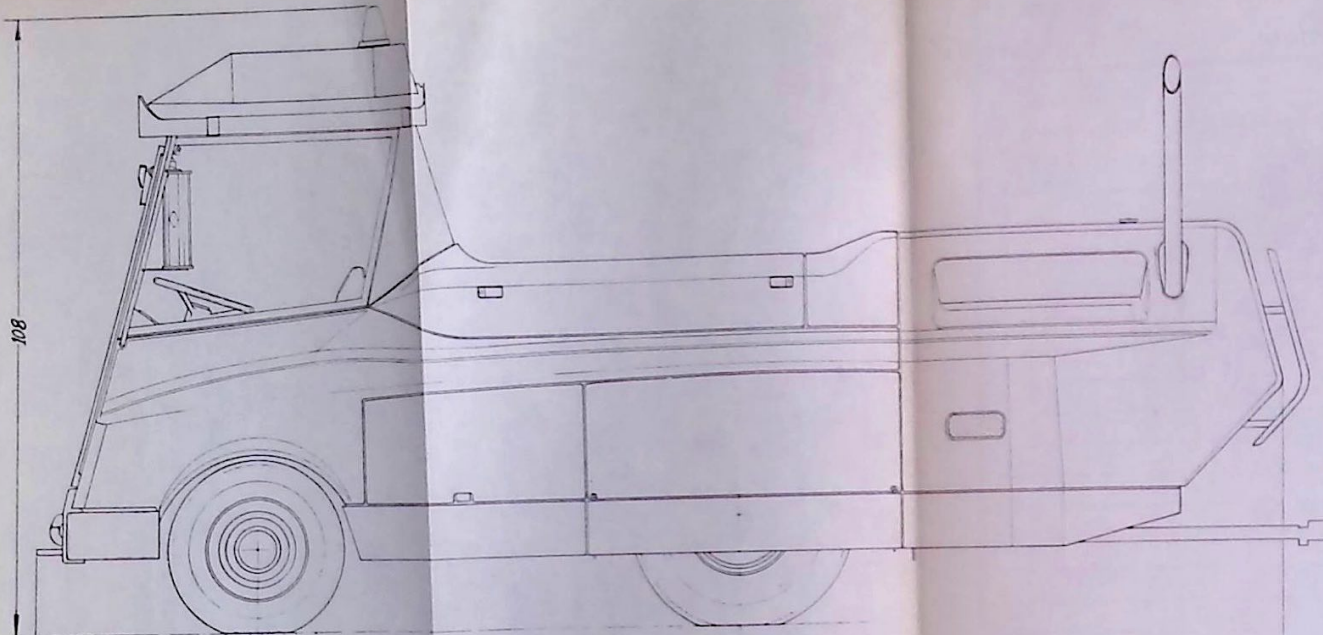


ITEM	PART	DESCRIPTION	QTY
85.	3928096	HOUSING, DIRECTIONAL	1
86.	3929741	BUTTON, HORN	1
87.	3931568	RING, RETAINING	1
88.	3782965	KNOB	1
89.	3909580	LEVER	1
90.	3891229	BEARING, LOWER	1
91.	5673697	SEAT, SPRING	1
92.	3767108	SPRING	1
93.	3891230	SEAL, OUTER	1
94.	SC87	COLLAR, SETSCREW	1



CHEVROLET

BOSTON

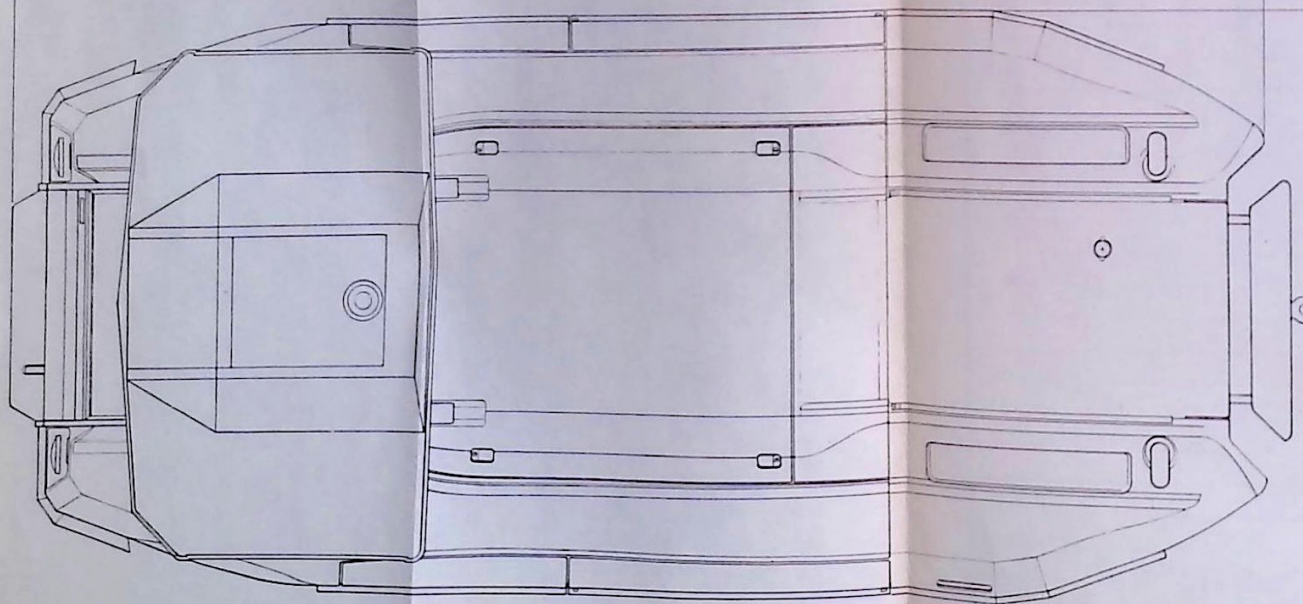


REAR VIEW

FRONT VIEW

3700 8500 9200 214.00

94.00

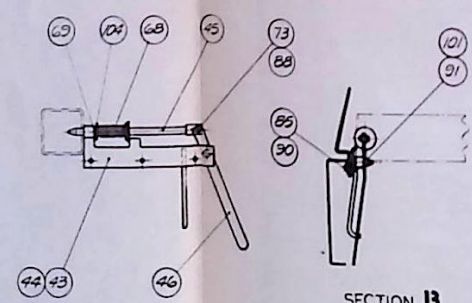
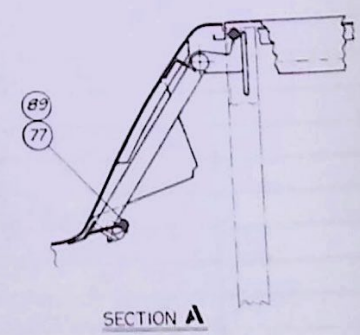
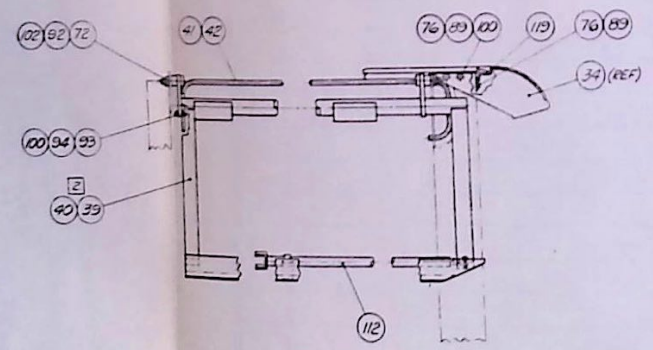
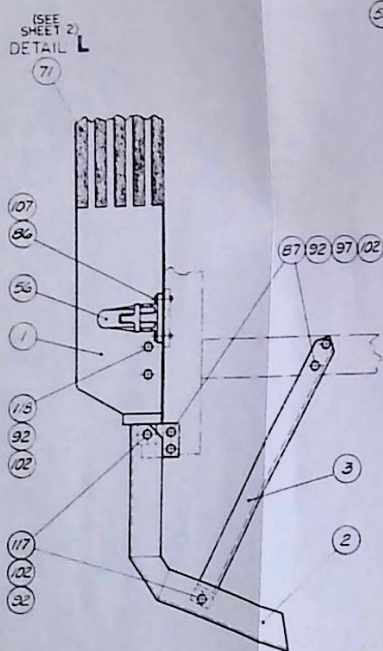
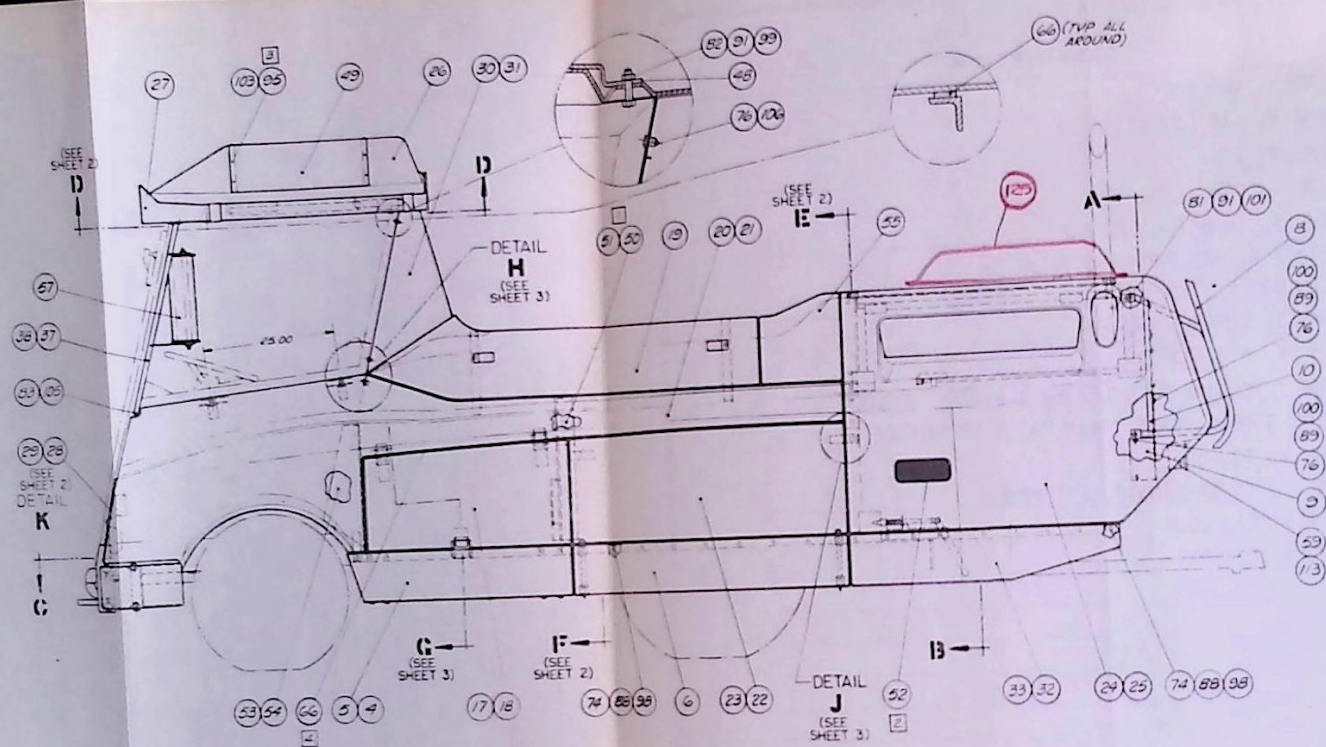


TOP VIEW

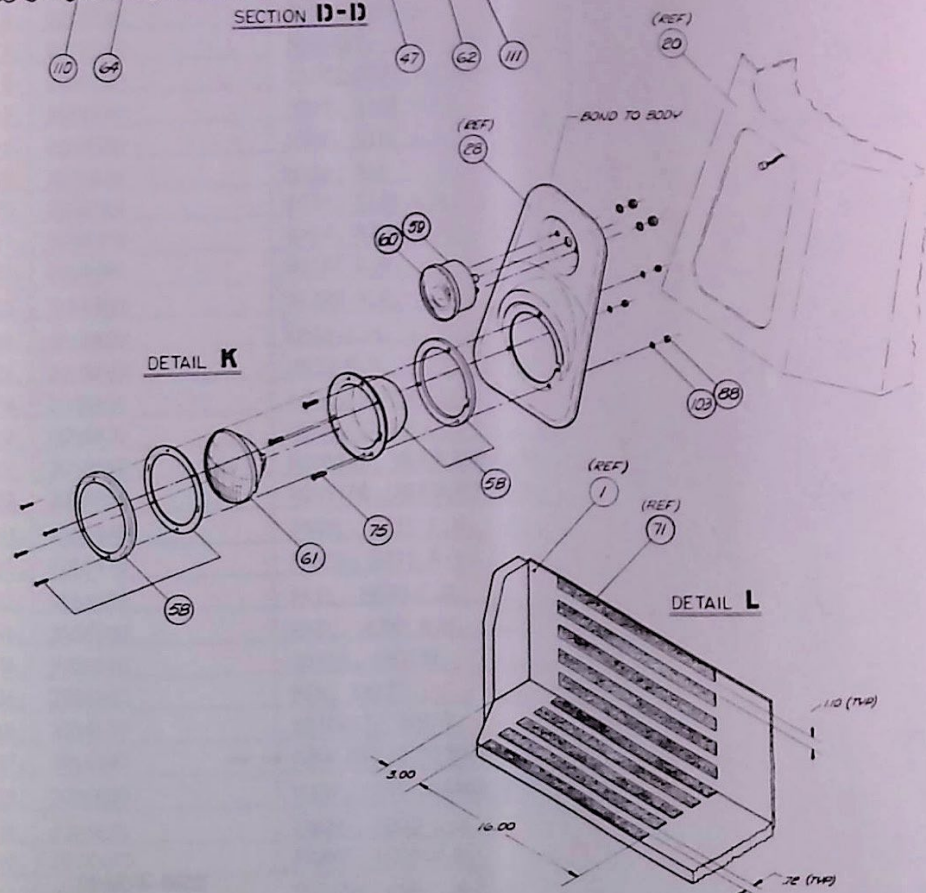
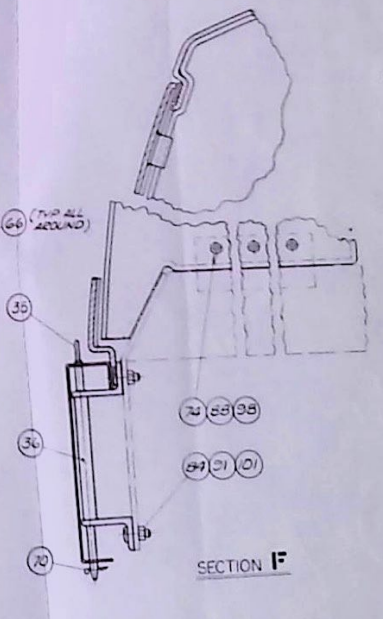
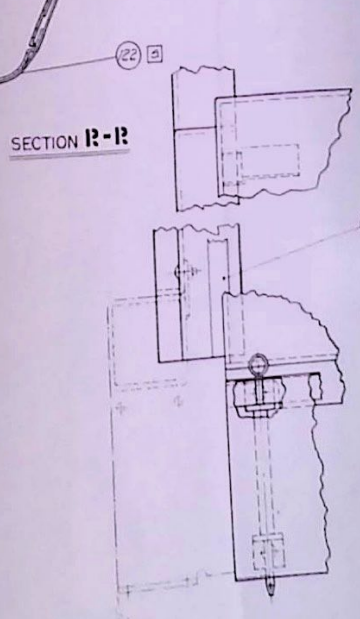
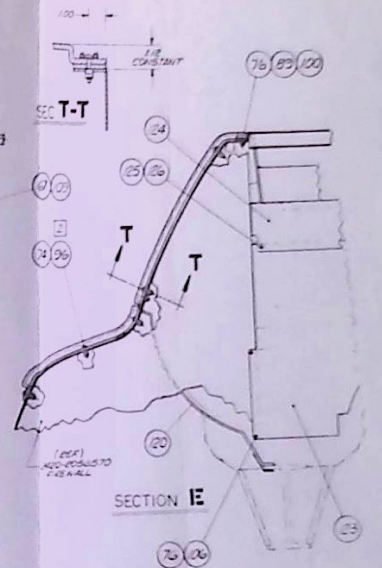
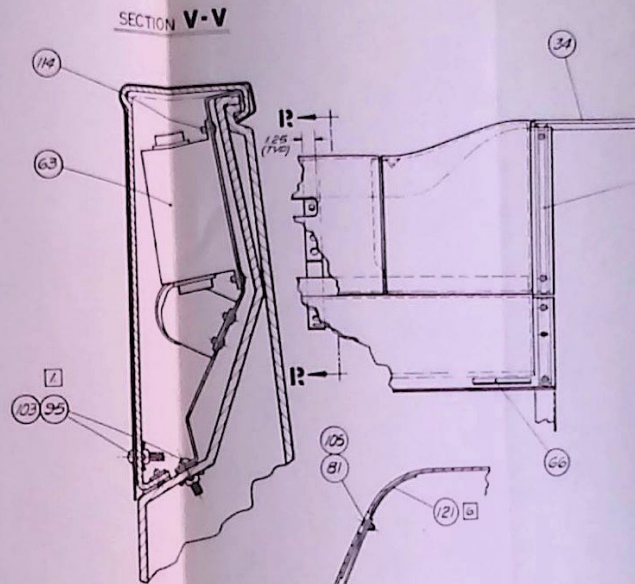
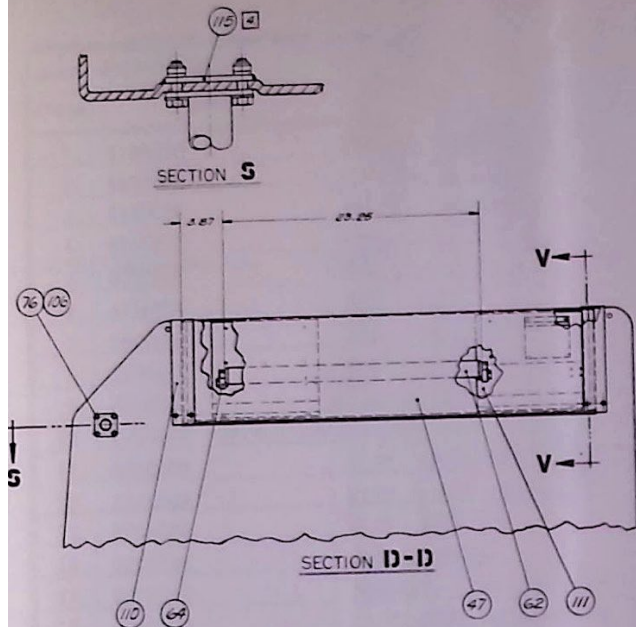
WG 2410-415599

ASSEMBLY, PARKING LOT TRACTOR

ITEM	PART	DESCRIPTION	QTY
1.	4156020	ASSEMBLY, CNG FUEL	1
2.	4156010	ASSEMBLY, AIR CONDITIONING	1
3.	4156000	ASSEMBLY, BODY	1
4.	4155980	ASSEMBLY, CAB	1
5.	4155950	ASSEMBLY, THROTTLE LINKAGE	1
6.	4155790	ALTERNATOR, AIR PUMP INSTALLATION	1
7.	4155630	ELECTRICAL SYSTEM	1
8.	4155620	ASSEMBLY, CONTROL CABLES	1
9.	4155580	ASSEMBLY, AIR SYSTEM	1
10.	4155440	ASSEMBLY, ENGINE AIR CLEANER & EXHAUST SYSTEM	1
11.	4155020	RUNNING GEAR & POWER TRAIN PARTS BREAKDOWN	1
12.	2056240	ASSEMBLY, TONGUE	1
13.	205688	ASSEMBLY, ENGINE INSTRUMENT PANEL	1
14.	415561	ASSEMBLY, CAB DOOR	1
15.	415610	ASSEMBLY, BATTERY	1

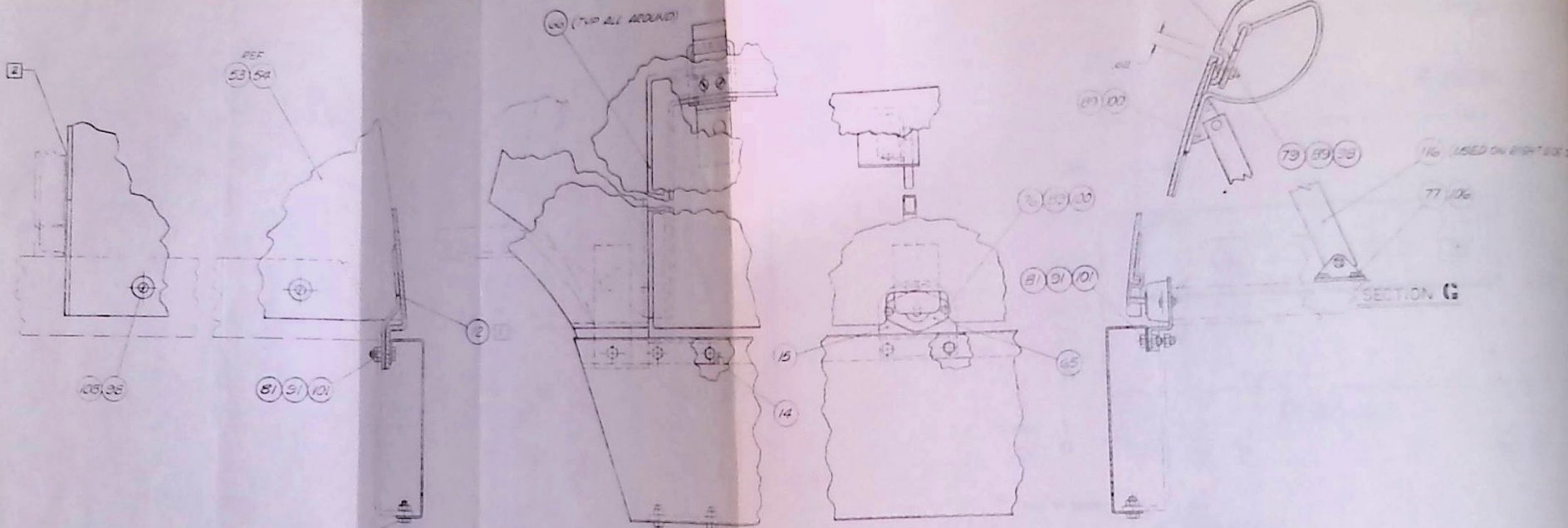


- 1 BOND TO BODY SIDE.
- 2 BOND TO HOOD.
- 3 DRILL .375 DIA. FOR INSTALLATION IN UPPER ROOF.
- 4 TYPICAL ALL AROUND UNDER OVERLAPPING PARTS.

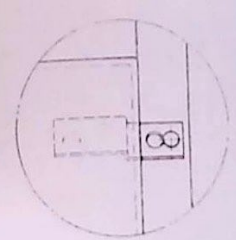
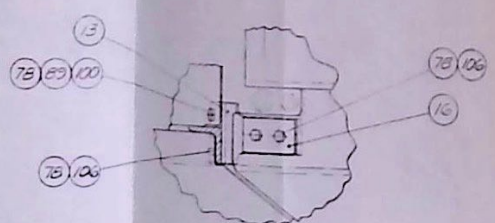


- 1 DRILL .375 DIA. FOR INSTALLATION IN LENS AND LOWER ROOF.
- 2 DRILL .281 DIA. FOR INSTALLATION IN FIREWALL.
- 3 DRILL .296 DIA. FOR INSTALLATION IN FRAME.
- 4 BOND TO LOWER ROOF.
- 5 BOND TO BODY SIDE.
- 6 BOND TO BODY TOP.

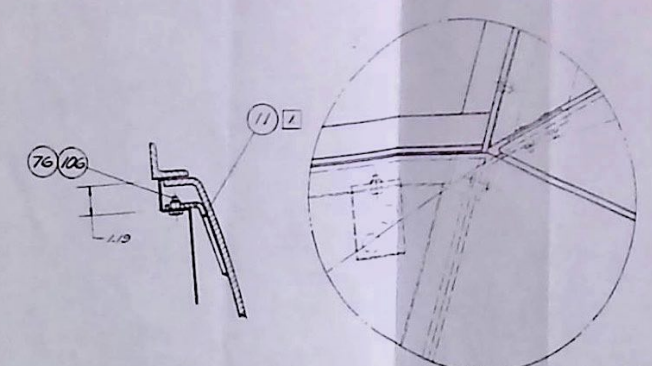
2510-415600
 ASSEMBLY, BODY
 SHEET 2 OF 3



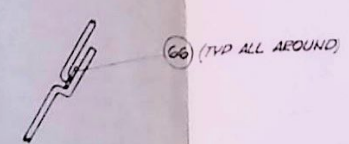
SECTION G



DETAIL J



DETAIL H



66 (TYP ALL AROUND)

17 BOND TO BODY SIDE.

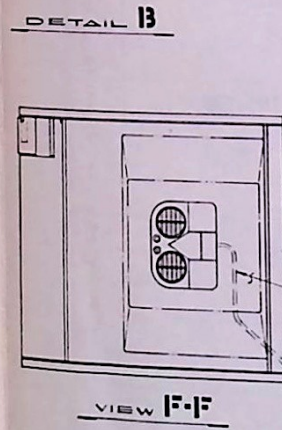
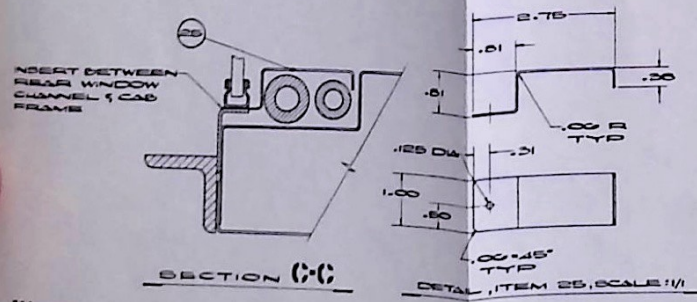
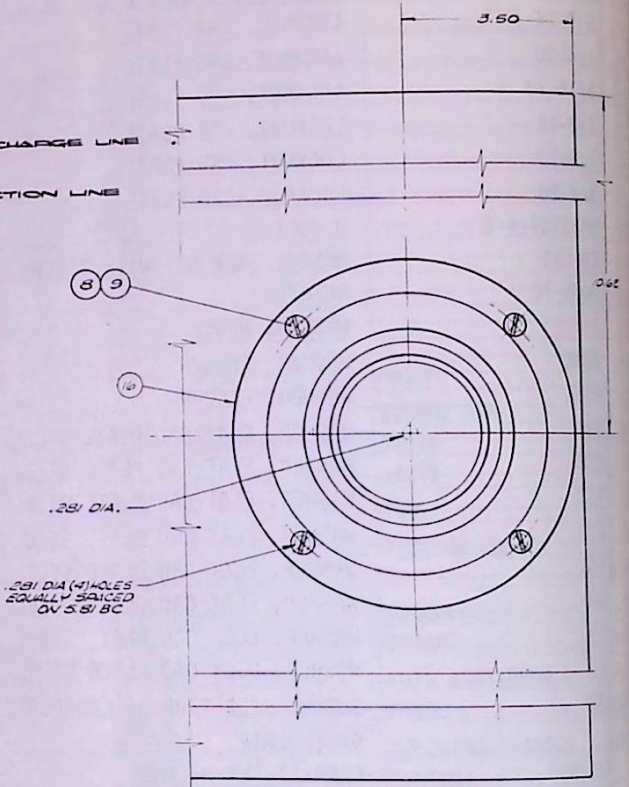
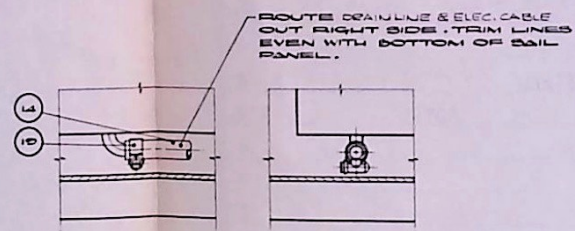
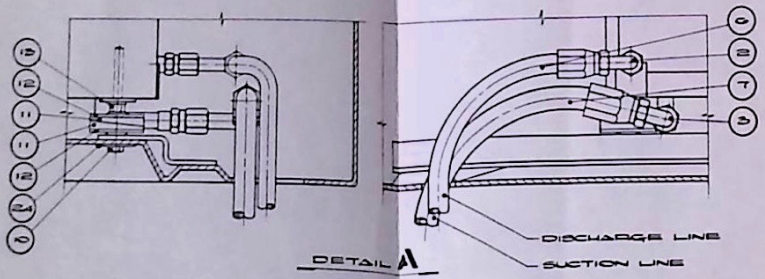
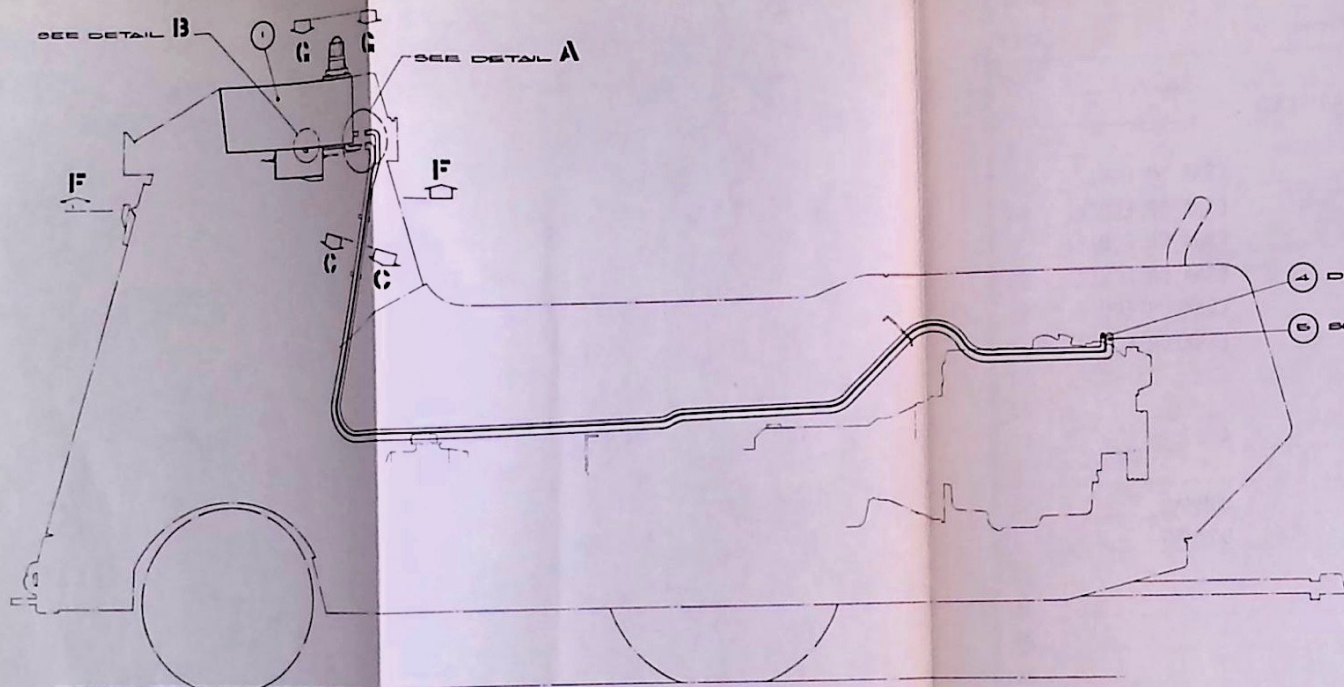
ITEM	PART	DESCRIPTION	QTY
1.	4155030	CENTER, FRONT BUMPER	1
2.	4155040	CORNER, FRONT BUMPER	2
3.	4155050	BRACKET, BUMPER	2
4.	4155810	RAIL, SIDE R.H.	1
5.	4155820	RAIL, SIDE L.H.	1
6.	4155830	RAIL, SKIRT	2
7.	2056040	PIN, SIDE DOOR HINGE	8
8.	2056050	ASSEMBLY, BAFFLE	1
9.	2056060	FILLER, BOTTOM	1
10.	2056070	FILLER, SIDE	2
11.	2056080	CLIP, UPPER BODY SIDE	4
12.	2056080	CLIP, LOWER BODY SIDE	2
13.	2056100	CLIP, BODY TOP	2
14.	2056130	BLOCK, SPACER	4
15.	2056140	BRACKET, SIDE DOOR SOCKET	2
16.	2056180	CLIP, BODY TOP DOUBLER	2
17.	2056190	DOOR, SIDE R.H.	1
18.	2056200	DOOR, SIDE L.H.	1
19.	2056350	BODY, TOP	1
20.	2056360	BODY, SIDE L.H.	1
21.	2056370	BODY, SIDE R.H.	1
22.	2056380	SKIRT L.H.	1
23.	2056390	SKIRT R.H.	1
24.	2056400	HOOD L.H.	1
25.	2056410	HOOD R.H.	1
26.	2056420	ROOF, UPPER	1
27.	2056430	ROOF, LOWER	1
28.	2056440	HOUSING, HEADLAMP L.H.	1
29.	2056450	HOUSING, HEADLAMP R.H.	1
30.	2056460	PANEL, SAIL L.H.	1
31.	2056470	PANEL, SAIL R.H.	1
32.	2056490	RAIL, HOOD L.H.	1
33.	2056500	RAIL, HOOD R.H.	1
34.	2056520	COVER, ENGINE	1
35.	2056540	PIN, SKIRT	4
36.	2056550	BRACKET, SKIRT	4
37.	2056590	POST, SIDE MIRROR L.H.	1
38.	2056600	POST, SIDE MIRROR R.H.	1
39.	2056630	FRAME, HOOD L.H.	1
40.	2056640	FRAME, HOOD R.H.	1
41.	2056650	SPRING, TORSION L.H.	1
42.	2056660	SPRING, TORSION R.H.	1

DWG 2510-415600

ASSEMBLY, BODY

ITEM	PART	DESCRIPTION	QTY
43.	2056670	BRACKET, LOCK L.H.	1
44.	2056680	BRACKET, LOCK R.H.	1
45.	2056690	PLUNGER, LOCK	2
46.	2056700	ARM	2
47.	2056710	LENS, ROOF LITE	2
48.	2056730	ROOF REINFORCEMENT	2
49.	2056740	PANEL, ROOF ACCESS	1
50.	2056970	BULKHEAD, SPLASH L.H.	1
51.	2056980	BULKHEAD, SPLASH R.H.	1
52.	4155340	GRILLE, AIR CLEANER	2
53.	4156490	SHIELD, SPLASH R.H.	1
54.	4156500	SHIELD, SPLASH L.H.	1
55.	2056340	COVER, GAS	1
56.	6020	HOOK, PINTLE	HADCO 1
57.	7000	MIRROR	SIGNAL STAT 2
58.	77032	HEADLAMP, WITHOUT BULB OR AMBER LENS	GROTE 2
59.	411LW	TURNLAMP	GROTE 4
60.	217-1	LENS, AMBER	GROTE 2
61.	4412	HEADLIGHT	G.E. OR EQUIV. 2
62.	FZOT12/CW	LAMP, FLUORESCENT	2
63.	106012	BALLAST, TRANSISTORIZED	MOBILITE 4
64.	4304-W	LAMPHOLDER	BRYANT 2
65.	DH-100	DOOR HOLDER	AUTO CITY PROD. A/R
66.	1" X 1/4	TAPE, FOAM	ARNO A/R
67.	1" WIDE	LACING, CHANNEL HOOD	BOETHING-FRANCIS 2
68.	55	SPRING, COMPRESSION	CENTURY 2
69.	AN380-4-4	PIN, COTTER 1/8 DIA X 1" LONG	4
70.	80	PIN, COWLING LOCK	VAN DUSEN A/R
71.		SAFETY WALK, ADHESIVE BACKED GRAY 1" WIDE 3M	4
72.	41722	BOLT, SHOULDER	JERGENS 2
73.	1/4 X 1/4 X 10-24	BOLT, SHOULDER STL CAD PLATE	42
74.	10-24 X 1"	SCREW, TRUSS HEAD STL CAD PLATE	6
75.	10-24 X 1"	SCREW, ROUND HEAD STL CAD PLATE	48
76.	1/4-20 X 3/4	BOLT, HEX HEAD STL CAD PLATE	4
77.	1/4-20 X 1"	BOLT, HEX HEAD STL CAD PLATE	8
78.	1/4-20 X 1 1/2	BOLT, HEX HEAD STL CAD PLATE	20
79.	1/4-20 X 1"	BOLT, TRUSS HEAD STL CAD PLATE	2
80.	1/4-20 X 3/4	BOLT, CARRIAGE SUPPLIED WITH AIR COND. CAD PLATE	30
81.	3/8-16 X 1 1/4	BOLT, HEX HEAD STL CAD PLATE	4
82.	3/8-16 X 1 1/2	BOLT, HEX HEAD STL CAD PLATE	2
83.	3/8-24 X 3/4	BOLT, HEX HEAD STL CAD PLATE	8
84.	3/8-16 X 1"	BOLT, BINDER HEAD STL CAD PLATE	8

ITEM	PART	DESCRIPTION	QTY
35.	5/16-18 X 1"	BOLT, HEX HEAD STL CAD PLATE	6
36.	1/2-13 X 1 1/2	BOLT, HEX HEAD STL (GRADE 8) CAD PLATE	4
87.	1/2-13 X 2 1/4	BOLT, HEX HEAD STL CAD PLATE	8
88.	#10-24	LOCKNUT, CAD PLATE	ESNA OR EQUIV. 40
89.	1/4-20	LOCKNUT, CAD PLATE	ESNA OR EQUIV. 60
90.	5/16-18	LOCKNUT, CAD PLATE	ESNA OR EQUIV. 6
91.	3/8-16	LOCKNUT, CAD PLATE	ESNA OR EQUIV. 40
92.	1/2-13	LOCKNUT, CAD PLATE	ESNA OR EQUIV. 41
93.	1/4-28	LOCKNUT, CAD PLATE	ESNA OR EQUIV. 4
94.	NAS3104-4-8	U BOLT	2
95.	CD-6XS	MOLLY, JACK NUT WITH SCREW	28
96.	9505-10	NUTSERT	AVDEL 10
97.	1/2	WASHER, WEDGE	8
98.	W28X	WASHER, FENDER	DORMAN 58
99.	W30X	WASHER, FENDER	DORMAN 4
100.	1/4	WASHER, FLAT CAD PLATE STEEL	38
101.	3/8	WASHER, FLAT CAD PLATE STEEL	36
102.	1/2	WASHER, FLAT CAD PLATE STEEL	24
103.	#10	WASHER, FLAT CAD PLATE STEEL	26
104.	5/8	WASHER, FLAT CAD PLATE STEEL	4
105.	3/8	WASHER, FLAT CAD PLATE STEEL	6
106.	1/4	WASHER, LOCK CAD PLATE STEEL	20
107.	1/2	WASHER, LOCK CAD PLATE STEEL	4
108.	#10	SCREW, SELF TAPPING CAD PLATE STEEL	6
109.		GREEN GRIP	ROYAL A/R
110.	4156550	BRACKET, LAMP LENS	4
111.	4156530	BRACKET, LAMP	4
112.	4156570	HOOD PROP	2
113.	217-1	LENS, RED	GROTE 2
114.	AD42BS	RIVET, POP	USM 16
115.	4156120	REINFORCEMENT MIRROR POST	2
116.	DP-100	DOOR PROP AUTO CITY	BOETHING-FRANCIS 1
117.	1/2-13 X 1 1/2	BOLT, HEX HD STL CAD PLATE STEEL	8
118.	1/2-13 X 2 1/2	BOLT, HEX HD STL CAD PLATE STEEL	4
119.	2056480	TIE BAR, RADIATOR SUPPORT	1
120.	2056840	SHIELD, PCV	2
121.	2056930	STRAP, BODY TOP	4
122.	4155860	STRAP, BODY SIDE	4
123.	2056860	FIREWALL, CENTER	1
124.	2056850	FIREWALL, ACCESS PANEL	1
125	415713	HOUSING	

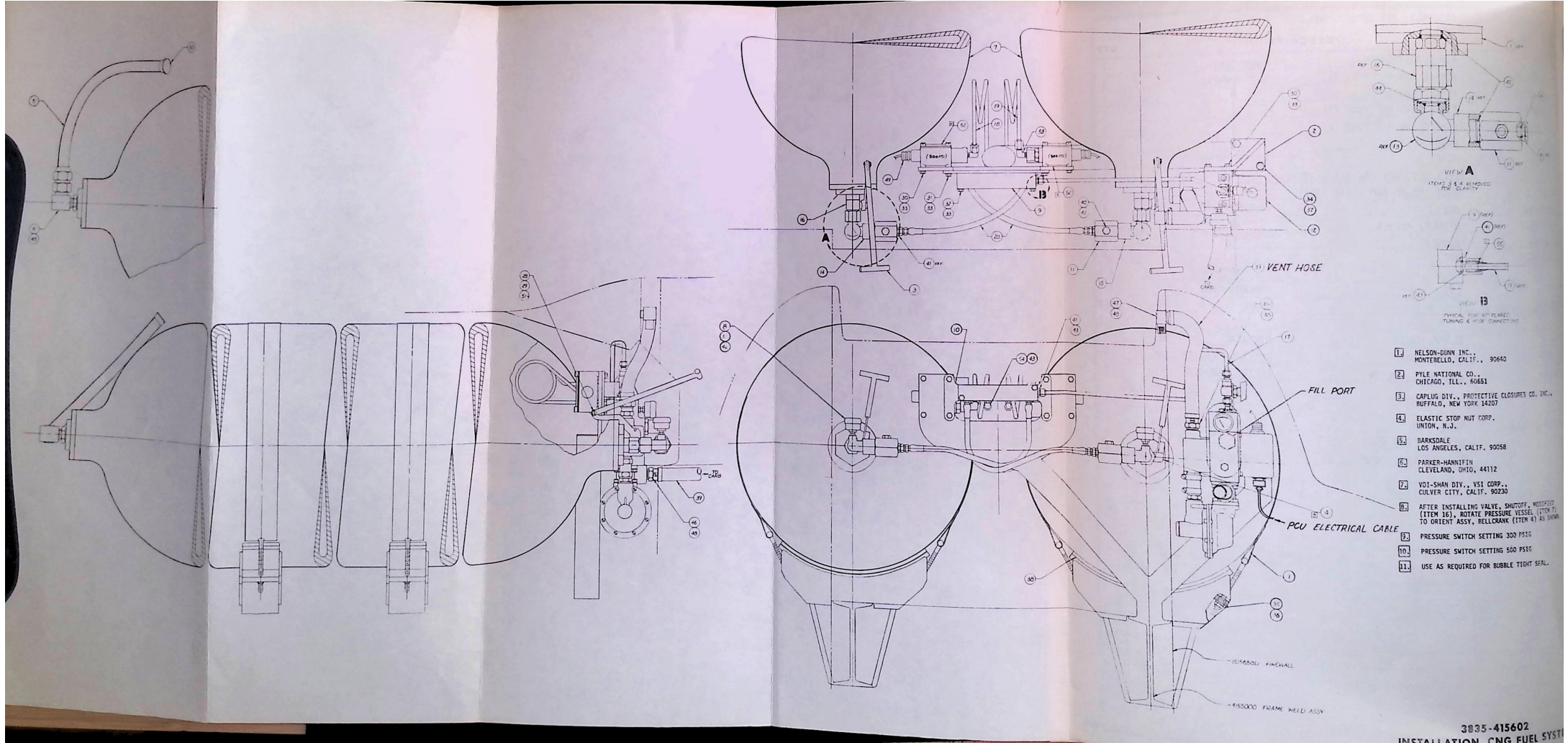


- 1 THERMO-KING (ITEMS 10-15 SUPPLIED WITH A/C UNIT, ITEM 1).
- 2 WEATHERHEAD
- 3 BIRNBACH
- 4 GENERAL SERVICE LINE
- 5 CALIFORNIA HARDWARE
- 6 FOR BODY DETAILS SEE DWG. 415600.
- 7 FOR ELEC. CONNECTIONS SEE DWG. 415563.

WG 4120-415601

ASSEMBLY, AIR CONDITIONING

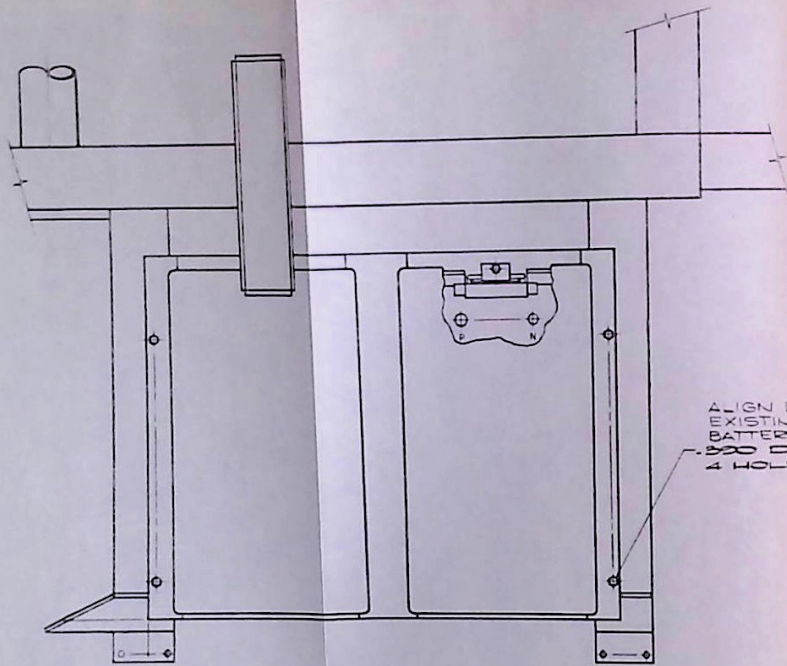
ITEM	PART	DESCRIPTION	QTY
1.	TK542	AIR CONDITIONER THERMO-KING	1
2.	24708N-648	FEMALE SWV 90° TUBE ELL WEATHERHEAD	1
3.	24710N-650	FEMALE SWV 90° TUBE ELL	1
4.	24708N-688	FEMALE SWV 45° TUBE ELL	1
5.	24710N-690	FEMALE SWV 45° TUBE ELL	1
6.	H247-8	HOSE	A/R
7.	H247-10	HOSE WEATHERHEAD	A/R
8.	1/4-20	LOCK NUT, HEX CAD PLATE STEEL	4
9.	1/4-20 X 3/4	BOLT, RD HD CAD PLATE STEEL	4
10.	1082A68H07	BOLT THERMO-KING	4
11.	1018A18H01	WASHER, RUBBER	8
12.	1018A19H01	WASHER	8
13.	1080A18G20	NUT	4
14.		HOSE	A/R
15.		CABLE, ELECT. THERMO-KING	A/R
16.	DWG.415563 ITEM 43	ROOF FLASHER	REF
17.			
18.	729	CLAMP, CABLE BIRBACH	3
19.	5-5212	CLAMP, HOSE GENERAL SERVICE LINE	2
20.	CD4XS	JACK NUT, MOLLEY CALIF. HARDWARE	1
21.			
22.			
23.	6-32 X 3/8 LG	BOLT, HEX	2
24.	3/8	WASHER, FLAT WOOD	4
25.		302-304 SST, .032 THK	4



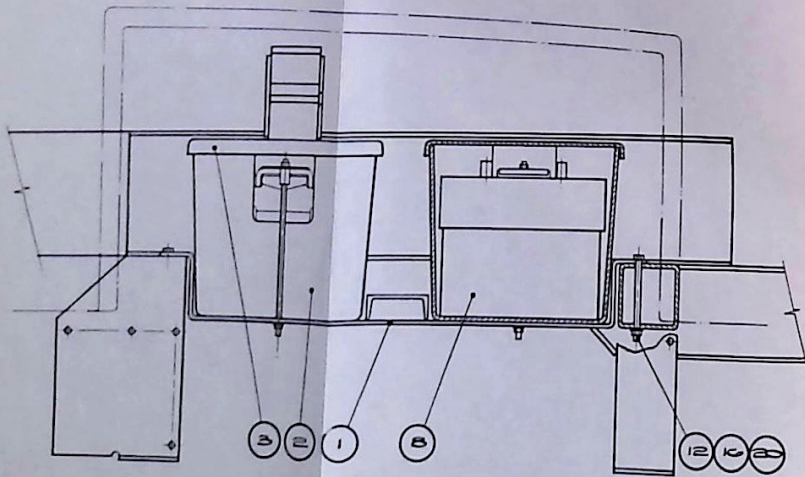
- 1 NELSON-DURN INC., MONTEBELLO, CALIF., 95640
- 2 PYLE NATIONAL CO., CHICAGO, ILL., 60651
- 3 CAPLID DIV., PROTECTIVE CLOSURES CO. INC., BUFFALO, NEW YORK 14207
- 4 ELASTIC STOP NUT CORP., UNION, N.J.
- 5 DARKSDALE LOS ANGELES, CALIF. 90058
- 6 PARKER-HANNIFIN CLEVELAND, OHIO, 44112
- 7 VOT-SHAN DIV., VSI CORP., CULVER CITY, CALIF. 90230
- 8 AFTER INSTALLING VALVE, SHUTOFF, MODIFIED (ITEM 16), ROTATE PRESSURE VESSEL (ITEM 7) TO ORIENT ASSY, BELLCRANK (ITEM 4) AS SHOWN
- 9 PRESSURE SWITCH SETTING 300 PSIG
- 10 PRESSURE SWITCH SETTING 500 PSIG
- 11 USE AS REQUIRED FOR BUBBLE TIGHT SEAL.

ITEM	PART	DESCRIPTION	QTY
1.	8120-305656	STRAP, CNG PRESSURE VESSEL	2
2.	5340-205681	BRACKET, PCU MOUNTING	1
3.	5340-205689	TEE-HANDLE	2
4.	3835-415659	ASSEMBLY, BELLCRANK	2
5.	3835-205694	CNG FUEL VENT	2
6.	3835-208436	SAFETY DEVICE	2
7.	3835-208443	PRESSURE VESSEL	2
8.	3835-208459	CAP, PLASTIC	2
9.	3835-208486	MANIFOLD	1
10.	3835-208498	BRACKET, MANIFOLD	1
11.	3835-203001	FLOW FUSE	2
12.	3835-208502	UNIT, PRESSURE CONTROL	1
13.	3835-208505	GAUGE, 0-3500 PSI	2
14.	3835-208508	ASSEMBLY, ADAPTER L.H.	1
15.	3835-208509	ASSEMBLY, ADAPTER R.H.	1
16.	3835-208558	VALVE, SHUTOFF, MODIFIED	2
17.	3835-415660	ASSEMBLY, TUBE PCU	1
18.	3835-415661	ASSEMBLY, TUBE 250 LB. SWITCH	1
19.	3835-415662	ASSEMBLY, TUBE 150 LB. SWITCH	1
20.	3835-415663	ASSEMBLY, HOSE PRESSURE VESSEL	2
21.			
22.			
23.			
24.			
25.			
26.			
27.			
28.	10-32 UNF X .88 LG	SCREW, SLOT HEAD	2
29.	#10	WASHER, FLAT	2
30.	1/4-20UNC X .75 LG	BOLT, HEX HD	8
31.	1/4-20UNC X 1.00 LG	BOLT, HEX HD	4
32.	1/4-20UNC X 2.00 LG	BOLT, HEX HD	2
33.	1/4 MEDIUM	WASHER, LOCK	14
34.	1/2-13UNC X .75 LG	BOLT, HEX HD	2
35.	1/2-13 UNC	NUT, LOCK	4
36.	1/2	WASHER, FLAT	4
37.	1/2	WASHER, LOCK	2
38.	1/4 THK X 3 1/2 X		
	16 1/2 LG	BELTING, GROOVED	2
39.	1" I.D.	HOSE, VAPOR	A/R
40.	AN814-3D	PLUG, BLEEDER	2
41.	AN815-5	UNION	3

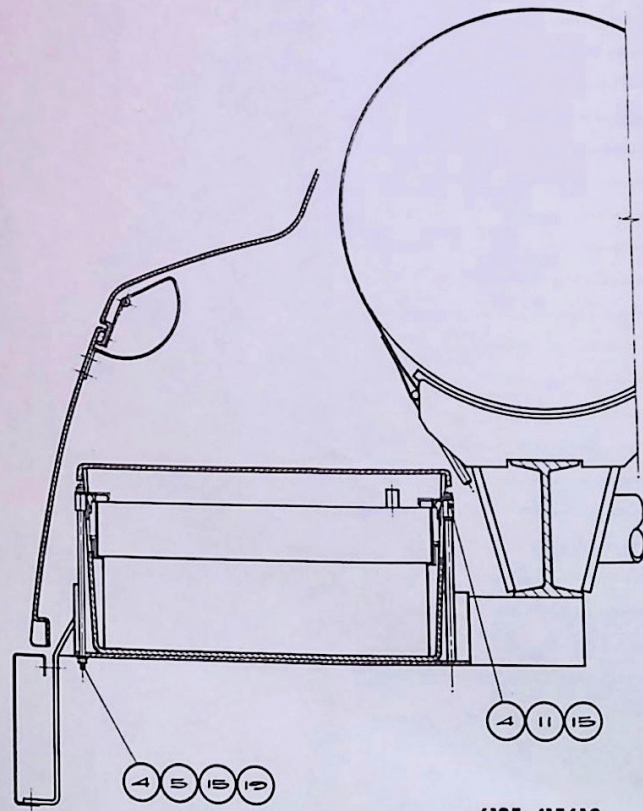
ITEM	PART	DESCRIPTION		QTY
42.	MS28778-3	O RING		4
43.	MS28778-5	O RING		5
44.	MS28778-8	O RING		2
45.	MS28778-12	O RING		6
46.	86SP	STRAIGHT HOSE FITTING, PORTED	NELSON-DUNN	2
47.	86EZ	ELBOW, HOSE FITTING	" "	1
48.	GS-12	CLAMP	" "	4
49.	D83316	CORD GRIP	PYLE NATIONAL CO.	2
50.	EC-12	CAP, PLASTIC	CAPLUG	2
51.	22NM-02	NUT, SELF LOCK, 10-32 UNF	ESNA	2
52.	9048-3-F3	SWITCH, PRESSURE	BARKSDALE	2
53.	5-4-CTX-SS	ELBOW	PARKER-HANNIFIN	2
54.	5-C5X-S	ELBOW	" "	2
55.	VSF1015A5	SEAL (ALUM)	VOI-SHAN	7



ALIGN
EXISTING
HOLE FOR
BATTERY
TERMINALS
TO LEG 1



A16



6135-415610
INSTALLATION BATTERY

