



*Souvenir*  
NEW YORK WORLD'S FAIR  
HOME  
SECRETARY



FOR DAILY ENGAGEMENTS—  
PURCHASES AND MENUS

© N.Y.W.F. LIC. No. 361

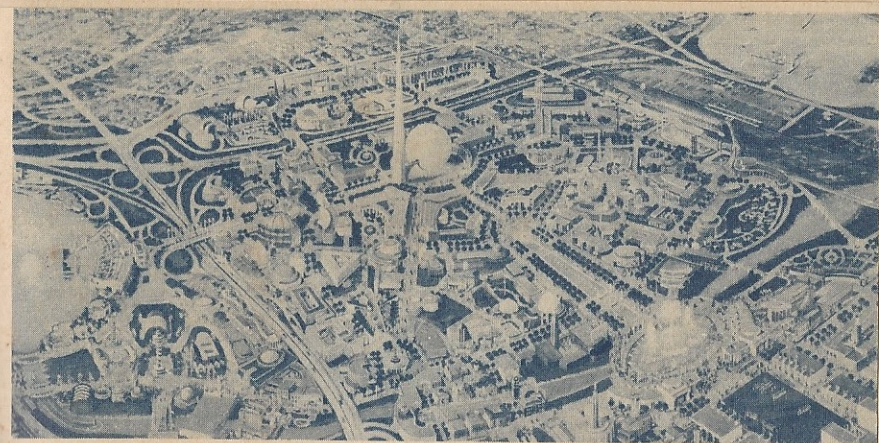


# HOME SECRETARY



**SOUVENIR  
NEW YORK  
WORLD'S FAIR**





## NEW YORK WORLD'S FAIR AT-A-GLANCE

### **THEME...** "Building the World of Tomorrow"

... A promise for the Future, built with the tools of Today, upon the experience of Yesterday.

### **OPENING** ... April 30, 1939 ... To commemorate the launching of our Government under the

Federal Constitution years ago.

### **PARTICIPATION** ... The great nations of the

world, our own Federal Government, states and territories, the City of New York—industry, labor, civic groups—art and science—have combined to present an inspiring glimpse of "World of Tomorrow."

### **SITE** ... Flushing Meadow Park, New York City

—3 miles long—1½ miles wide—1216½ acres ... More than 370 city blocks ... Near the geographic and population centers of New York City.

### **COST** ... \$155,000,000—the Fair Corporation

spending \$50,000,000—Federal and State governments and the City of New York \$35,000,000—foreign governments and private exhibitors, \$70,000,000.

### **BUILDINGS** ... More than 200, conforming in

beauty and dignity with the Theme Center—the Trylon, a slender, graceful spire taller than the Washington Monument, and the Perisphere, a giant globe as high as a 18-story building.

### **ENTERTAINMENT** ... Two miles of fun ...

Room for 350,000 visitors ... The biggest and gayest amusement park in the world.

### **TRANSPORTATION** ... Facilities to take

165,000 persons hourly to the Fair—by Long Island Railroad, IRT, BMT, and Independent subway lines, by trolley and bus, all to stations within the Fair grounds ... By automobile over the new Triborough bridge and other bridges and wide, roomy, convenient highways, with parking facilities for 35,000 cars ... By boat to World's Fair docks in Flushing Bay ... By air to neighboring North Beach Airport.



# HOME SECRETARY

DAILY ACTIVITIES



*A book  
especially designed to  
assist in planning  
each day  
to the best advantage*



Copyrighted 1938 by NASCON SERVICE INC., New York, N. Y.

Printed in U. S. A.



ADDITIONAL COPIES OF THIS BOOK AND REFILLS  
FOR REFILLABLE NUMBERS AVAILABLE AT YOUR LOCAL DEALER

### CALENDAR 1938

JANUARY	APRIL	JULY	DECEMBER
S M T W T F S 2 3 4 5 6 7 8 9 10 11 12 13 14 15 16 17 18 19 20 21 22 23 24 25 26 27 28 29	S M T W T F S 12 13 14 15 16 17 18 19 20 21 22 23 24 25 26 27 28 29 30 31	S M T W T F S 12 13 14 15 16 17 18 19 20 21 22 23 24 25 26 27 28 29 30 31	S M T W T F S 12 13 14 15 16 17 18 19 20 21 22 23 24 25 26 27 28 29 30 31
FEBRUARY	MAY	AUGUST	NOVEMBER
S M T W T F S 6 7 8 9 10 11 12 13 14 15 16 17 18 19 20 21 22 23 24 25 26 27 28	S M T W T F S 12 13 14 15 16 17 18 19 20 21 22 23 24 25 26 27 28 29 30 31	S M T W T F S 12 13 14 15 16 17 18 19 20 21 22 23 24 25 26 27 28 29 30 31	S M T W T F S 12 13 14 15 16 17 18 19 20 21 22 23 24 25 26 27 28 29 30 31
MARCH	JUNE	SEPTEMBER	OCTOBER
S M T W T F S 6 7 8 9 10 11 12 13 14 15 16 17 18 19 20 21 22 23 24 25 26 27 28 29 30 31	S M T W T F S 12 13 14 15 16 17 18 19 20 21 22 23 24 25 26 27 28 29 30 31	S M T W T F S 12 13 14 15 16 17 18 19 20 21 22 23 24 25 26 27 28 29 30 31	S M T W T F S 12 13 14 15 16 17 18 19 20 21 22 23 24 25 26 27 28 29 30 31

### CALENDAR 1939

JANUARY	APRIL	JULY	DECEMBER
S M T W T F S 1 2 3 4 5 6 7 8 9 10 11 12 13 14 15 16 17 18 19 20 21 22 23 24 25 26 27 28 29	S M T W T F S 12 13 14 15 16 17 18 19 20 21 22 23 24 25 26 27 28 29 30 31	S M T W T F S 12 13 14 15 16 17 18 19 20 21 22 23 24 25 26 27 28 29 30 31	S M T W T F S 12 13 14 15 16 17 18 19 20 21 22 23 24 25 26 27 28 29 30 31
FEBRUARY	MAY	AUGUST	NOVEMBER
S M T W T F S 1 2 3 4 5 6 7 8 9 10 11 12 13 14 15 16 17 18 19 20 21 22 23 24 25 26 27 28 29	S M T W T F S 12 13 14 15 16 17 18 19 20 21 22 23 24 25 26 27 28 29 30 31	S M T W T F S 12 13 14 15 16 17 18 19 20 21 22 23 24 25 26 27 28 29 30 31	S M T W T F S 12 13 14 15 16 17 18 19 20 21 22 23 24 25 26 27 28 29 30 31
MARCH	JUNE	SEPTEMBER	OCTOBER
S M T W T F S 1 2 3 4 5 6 7 8 9 10 11 12 13 14 15 16 17 18 19 20 21 22 23 24 25 26 27 28 29	S M T W T F S 12 13 14 15 16 17 18 19 20 21 22 23 24 25 26 27 28 29 30 31	S M T W T F S 12 13 14 15 16 17 18 19 20 21 22 23 24 25 26 27 28 29 30 31	S M T W T F S 12 13 14 15 16 17 18 19 20 21 22 23 24 25 26 27 28 29 30 31

### CALENDAR 1940

JANUARY	APRIL	JULY	DECEMBER
S M T W T F S 1 2 3 4 5 6 7 8 9 10 11 12 13 14 15 16 17 18 19 20 21 22 23 24 25 26 27 28 29	S M T W T F S 12 13 14 15 16 17 18 19 20 21 22 23 24 25 26 27 28 29 30 31	S M T W T F S 12 13 14 15 16 17 18 19 20 21 22 23 24 25 26 27 28 29 30 31	S M T W T F S 12 13 14 15 16 17 18 19 20 21 22 23 24 25 26 27 28 29 30 31
FEBRUARY	MAY	AUGUST	NOVEMBER
S M T W T F S 1 2 3 4 5 6 7 8 9 10 11 12 13 14 15 16 17 18 19 20 21 22 23 24 25 26 27 28 29	S M T W T F S 12 13 14 15 16 17 18 19 20 21 22 23 24 25 26 27 28 29 30 31	S M T W T F S 12 13 14 15 16 17 18 19 20 21 22 23 24 25 26 27 28 29 30 31	S M T W T F S 12 13 14 15 16 17 18 19 20 21 22 23 24 25 26 27 28 29 30 31
MARCH	JUNE	SEPTEMBER	OCTOBER
S M T W T F S 1 2 3 4 5 6 7 8 9 10 11 12 13 14 15 16 17 18 19 20 21 22 23 24 25 26 27 28 29	S M T W T F S 12 13 14 15 16 17 18 19 20 21 22 23 24 25 26 27 28 29 30 31	S M T W T F S 12 13 14 15 16 17 18 19 20 21 22 23 24 25 26 27 28 29 30 31	S M T W T F S 12 13 14 15 16 17 18 19 20 21 22 23 24 25 26 27 28 29 30 31

Date May 18, 1938

8	3	L. C. meeting
9	4	Call Jane
10	5	
11	6	Dentist
12	7	George & Grace for dinner
1	8	Luncheon with Dick
2	9	8.30 Theatre.

### Purchases—Menu

Roast beef, peas,  
carrots—salted  
nuts, olives, coffee.

### Dinner Menu

Fruit Cup  
Roast beef  
Peas and Carrots  
Baked Potatoes  
Lettuce & Tomato Salad  
Chocolate cake Coffee

### DAILY ACTIVITIES



### Memoranda

Tell Nora to clean  
silver, hang new  
curtains in bedroom,  
make canapes.



Date \_\_\_\_\_

8

3

9

4

10

5

11

6

12

7

1

8

2

9

Purchases — Menu

DAILY ACTIVITIES



Memoranda

Date \_\_\_\_\_

8

3

9

4

10

5

11

6

12

7

1

8

2

9

Purchases — Menu

DAILY ACTIVITIES



Memoranda