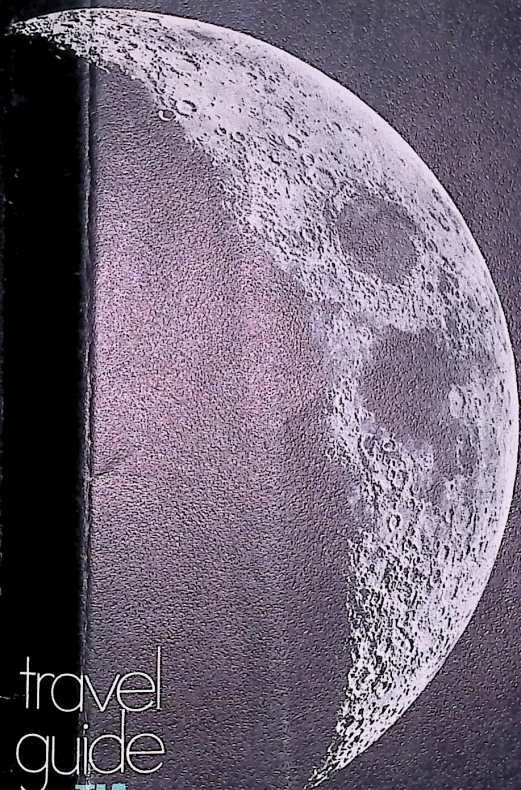


TIA TRAVEL GUIDE

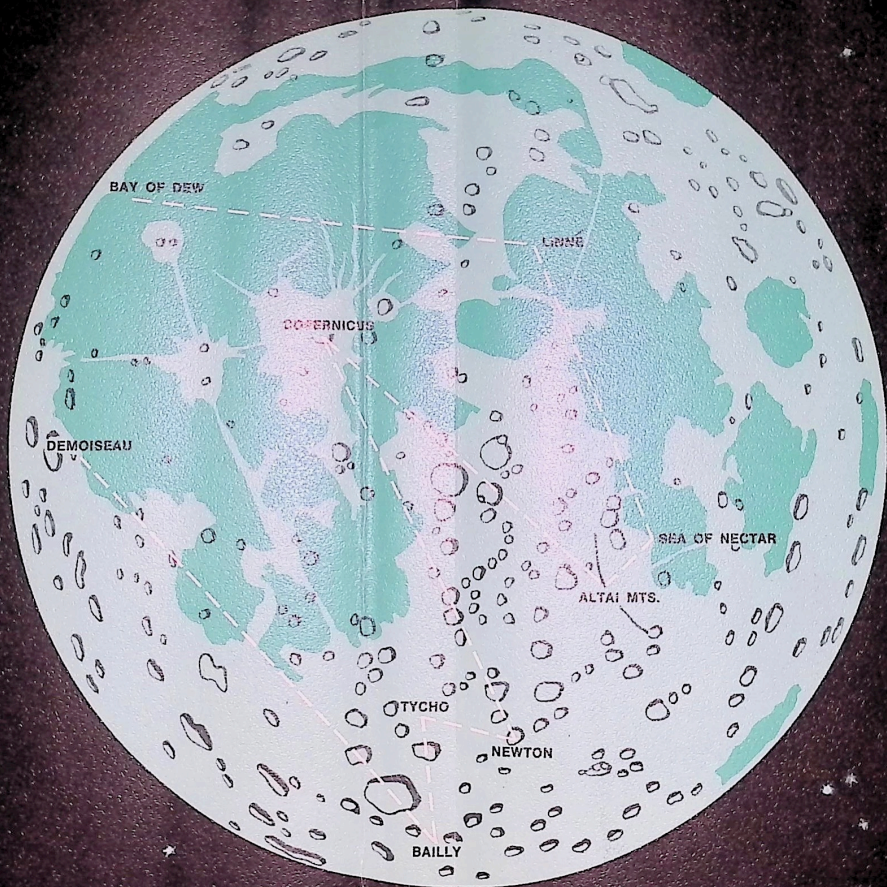
CHARTERS to the MOON



travel
guide

from **TIA** *The Innovator Airline*

TIA TRAVELAND



This booklet was prepared especially for the travel agent as a guide to use in planning, for his clients, future-out-of-this-world charter travel. As the leading air charter carrier, TIA is proud to help travel agents to prepare for the future, just as we work together in the present.



points of interest: moonsights you'll want to see

Certainly one of life's most dramatic tour experiences!

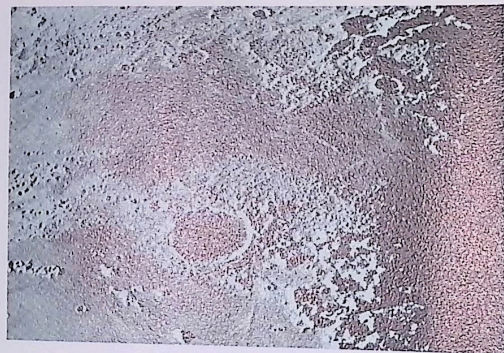
* The most prominent features of the lunar satellite are the thousands of walled plains or craters. Lofty mountains tower into the black sky; the Moon's surface is pitted with craters from a few feet across up to one big enough to hold Connecticut. The parts of the Moonscape that we used to view through telescopes as "dark areas" are, as you will recognize, seas of lava that spread over the surface millions of years after the formation of the craters, which are great circular pits with sunken floors and rimmed with high mountainous ramparts. You will visit:

The Plain of Bailly—The largest Moon crater, over 170 miles in diameter. Inside its walls, the crater is not really a pit, but a gently saucer-shaped plain.

Tycho Crater—Big enough to hold all of Rhode Island. The walls tower 15,000 feet above the floor. Inside the crater is a huge and jagged mountain range. Ridges of lava radiate out from the crater like spokes of a wheel.

Newton Crater—The walls are not high above the surrounding terrain. Newton looks like a rimmed hole—but what a hole! It is 29,000 feet deep. If we dropped our largest Himalayan mountain into it, even Everest's peak wouldn't poke out.

Crater Linné—Another unique Moonscape, Linné is a deep, smallish pit in the crest of a dome that is surrounded by a white desert. In 1843 it was seen as a deep, prominent crater in the middle of the Sea of Serenity. In 1865 a German astronomer saw it as it appears now. What happened? Probably a Moonquake, causing the walls of the old crater to collapse into the desert-like deposit that now surrounds the smaller crater. Linné presents the only change in the Moonscape since the development of the celestial telescope hundreds of years ago. *



take a walk on the moon

* For a unique experience, try a "Moonhike." The supporting strength of the lunar surface is much greater than previously suspected.

You will find that the Moonground is a dark, porous, hard, lava-like bed. There is no thick layer of white dust; in fact, no dust whatever.

You can walk easily and effortlessly on the moon surface. But don't walk too vigorously, and don't try to run or you may literally "take a flying jump at the Moon"—because here the force of gravity is only one sixth of Earth's. *

added notes on the moon tour itinerary

* For those individuals who wish to tour the Moon on the "free days" of their tour...at a leisurely pace, on their own time...and for those who wish to discover many pleasant and unforgettable surprises not usually experienced on ordinary tours: consider driving your own Budget Rent-A-Mooncar.

The photomap of the Moon within this folder, complete with tour routes and numbered points of interest, give you all that is needed for an enjoyable, memorable visit to the beautiful Moon.

After your restful 63½-hour trip by TIA "949" Super Space-car (you travel at speeds up to 36,000 miles per hour—six times the speed of the fastest bullet!), and after relaxation in your Luna luxury resort hotel, remember—Budget Rent-A-Mooncar serves *all* the Moon, with the latest model surface vehicles. Offices: Copernicus Crater. *

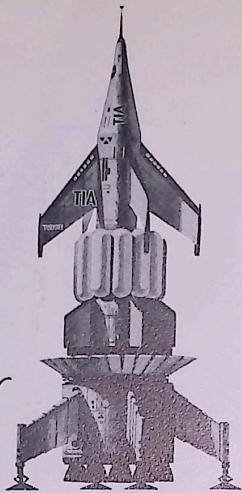


the moon: vacation land for the whole world

★ Enjoy your stay on the Moon, one of the most relaxing resorts in the Universe. Its unique attributes include: smog-free atmosphere, no rain or snow, no breath of wind, and profound silence. ★ Your hotel, the Luna, is located in the Sea of Showers—which is, of course, not a sea (nor does the moon have showers)... many of the outstanding geographical features of the Moon, such as the Ocean of Storms and the Sea of Moisture, were named before it was known that there was no water here. ★ Before setting out on a trip on the Moon surface, (and be sure to travel with an experienced guide), remember that the sun remains above the horizon two weeks at a time—so make arrangements to get back to your hotel before sundown, because the two-week night is the deepest, darkest black known to man. And, whereas your space suit will keep you comfortable in the usual daytime temperature of 214 degrees, night temperatures fall to a chilly 250 below zero...which would liquefy the air if there were any. ★ Since there is no water and no air here, there are no variations in the weather—never a cloud, never a storm. The weather is always the same—cold on the dark side of the Moon, hot on the light side.




UTA Travel Agency, Inc.
2518 Broadway at 94 St., N. Y. C.
TEL. 666-3300



your
TIA
spacecraft

★ The comfortable TIA "949" Super Spacecraft will be the finest civilian space vehicle aloft. The craft automatically guides itself en route to the Moon by taking photoelectric fixes of the Earth and the Sun. Retro rockets will slow the "949," then position it for a soft landing. Special spring-loaded multiple legs further soften the landing. But don't unbuckle your safety belt until your TIA stewardess tells you it's safe. We hope you will remember your TIA Moon Charter Flight with the greatest pleasure. ★

Trans International Airlines

 The Air Travel Service of Transamerica Corporation

For a down-to-earth quotation on any charter flight in this world, contact your travel agent or your closest TIA sales office:

Atlanta: 235 Peachtree Street, N.E., Suite 1113, Gas Light Tower, Atlanta, Georgia 30303 Phone: 404 577-5890 • **Boston:** 20 Providence Street, Boston, Massachusetts 02116 Phone: 617 542-0021 • **Chicago:** 230 N. Michigan Ave., Chicago, Illinois 60601 Phone: 312 332-0411 • **Detroit:** 16250 Northland Drive, Southfield, Michigan 48075 Phone: 313 353-6781 • **Honolulu:** 2222 Kalakaua Avenue, Honolulu, Hawaii 96815 Phone: 923-1138 • **Houston:** 4100 Southwest Freeway, Houston, Texas 77027 Phone: 713 666-3921 • **Los Angeles:** 10850 Riverside Drive, North Hollywood, California 91602 Phone: 213 980-2660 • **San Francisco:** 870 Market Street, Room 862 San Francisco, California 94102 Phone: 415 397-1486 • **Seattle:** 400 - 108th Avenue N.E., Bellevue, Washington 98004 Phone: 206 455-1045 • **Washington:** 1815 H Street, N.W., Washington, D. C. 20006 Phone: 202 393-7851 or 7262 • **New York:** 350 Fifth Avenue, Suite 3514-17, New York, New York 10001 Phone: 212 563-7725 • **Headquarters:** Oakland International Airport, Oakland, California Phone: 415 635-3000 • **European offices — Brussels:** 66, Bv. de L'Imperatrice, Rm. 218, Brussels, Belgium Phone: 13 16 00 • **Copenhagen:** Old Denmark Travel Bureau, Knabrostraede 6, 1210, Copenhagen, Denmark Phone: 15 14 33 • **Frankfurt:** 6 Frankfurt/Main, AM Hauptbahnhof 16, West Germany Phone: 25 20 52 • **London:** 140 Park Lane, Ste. 5, London W.1, England Phone: MAYfair 1060 • **Milan:** 11, Via P. Da Cannobio, Milan, Italy Phone: 89884. **Orient—Hong Kong:** 1104 Bank of Canton Bldg., 6 Des Voeux Road Central, Hong Kong Phone: 234285 • **Taipei:** Winner Airways, P.O. Box 3289, Taipei, Taiwan Phone: 548-002 • **Tokyo:** 77 Bank Bldg., 14-11 Ginza, 4-chome, Chuo-Ku, Tokyo 104, Japan Phone: 541-4783.