

VACATIONLAND

PUBLISHED BY

SPRING 1959

Disneyland



©Copyright 1959 Walt Disney Productions

IN THIS ISSUE

- Color Pictures of Disneyland
- Special Features on Disneyland
- Spotlight on the California Missions
- What to See in Southern California

IMPORTANT!

Disneyland SPRING AND SUMMER SCHEDULE

March 1—May 26
Open Wednesday through Sunday
10:00 AM-7:00 PM



EXCEPTION:
Wednesday, March 18 through Sunday, April 5
Open Every Day for Annual Easter Festival

Beginning May 27 . . . Open Every Day for Summer Season

EFFECTIVE UNTIL JUNE 1, 1959: Disneyland's GUIDED TOUR

Designed especially for the tourist and first-time visitor, Disneyland's new *Guided Tour* has been extremely popular with our guests since its inception in September. 100% of visitors interviewed in our Public Opinion Polls stated that they "thoroughly enjoyed" the Tour. With an official Disneyland Host or Hostess as your guide, the escorted tour takes approximately 1 hour and 45 minutes. Groups are limited in size for your maximum enjoyment. You visit each of the fabulous "lands" which have made Disneyland internationally famous: Tomorrowland, Adventureland, Fantasyland, Frontierland and Main Street, U.S.A. Your host or hostess will answer your questions and tell you interesting "behind the scenes" facts about each of Disneyland's five realms.

YOUR TOUR INCLUDES:

- Admission to Disneyland
- A personally conducted Tour through each "land."
A scenic train ride in a "private car" of the Santa Fe & Disneyland Railroad.
- You'll see the breathtaking Grand Canyon Diorama, largest in the world.
- Journey up Main Street, U.S.A. for a glimpse of the leisurely life and atmosphere of America in 1890-1910.
- A cruise aboard the Mississippi paddlewheel steamboat "Mark Twain" on the Rivers of America in Frontierland; or a trip across Rainbow Desert and into Underground Rainbow Caverns on the Mine Train.
- The "Space Trip to the Moon" in Tomorrowland, an authentic preview of man's future in outer space.
- The famous jungle river cruise in Adventureland, where life-like hippos, alligators and gorillas rule, and lush tropical plants and flowers flourish.
- A full color copy of "Walt Disney's Guide to Disneyland," a permanent souvenir of your day at Disneyland.

And when your tour is completed, you'll be free to enjoy the many attractions, free shows and exhibits, shops, stores and restaurants at the Magic Kingdom for as long as you wish!

All This for One Price:

COMPLETE GUIDED TOUR: \$3.50 FOR ADULTS—\$2.00 FOR CHILDREN (under 12)
(No charge for children under 3) (Prices subject to change)

Table of Contents

	Page
Fun for Everyone!	1
Information	
for Your Visit to Disneyland	2
This Is Disneyland!	2 & 3
Inside Adventureland	4 & 5
Seein' Southern California	6
VACATIONLAND Spotlights:	
The California Missions	7 & 8
Color Pictures of Disneyland	10 & 11
"Make Mine Music"	13
Over the Rainbow (Desert)	14 & 15
"Sleeping Beauty"	16
CHP Report to Tourists	18
Disneyland Photo Quiz	19
Services at Disneyland	20
Back Cover: Disney Map of Southern California, showing main routes to Disneyland.	

About the Cover

Picture a leisurely, sunny summer afternoon in *your* "home town" in 1890-1910—known to you in memory, by what others have said . . . or as you wish *yours* might have been.

There's the band, playing your favorites—from stirring march to sweet ballad . . . Town Square, where friends pass the time in pleasant conversation . . . the horse-drawn trolley, the "surrey with the fringe on top," the Omnibus—ready for a quiet ride through yesteryear . . . and nearby, there are the now-quaint shops to browse through—to simply enjoy.

This is Main Street, U.S.A. at the turn of the century—re-created by Walt Disney for you to "live in" again at Disneyland—the Magic Kingdom that takes young and old worlds away from today.

Mr. and Mrs. John Maas, right, of Provo, Utah, and their family—Frank, John, Jr., and Coralee—cross the moat in front of Sleeping Beauty Castle as they make their way from Fantasyland to still another "far-away land."

Twirling in a teacup—Mr. and Mrs. Stanford Chizzick, Martin, Carol and Toby, all from Denver—find this ride one of the most exciting in Fantasyland.



Mr. and Mrs. Herb Fisher, children Hope and Sheila, of Fullerton, California, and Mrs. Fisher's mother, Mrs. E. Barad, visiting from Florida, get ready for the surprises of the Alice in Wonderland ride at Disneyland.



Fun for Everyone!

"To all who come to this happy place . . . WELCOME."

So begins Walt Disney's message engraved on the dedication plaque in Disneyland's Town Square.

"Disneyland is your land," Walt's words continue. "Here age relives fond memories of the past . . . and here youth may savor the challenge and promise of the future."

"Disneyland is dedicated to the ideals, the dreams, and the hard facts that have created America . . . with the hope that

it will be a source of joy and inspiration to all the world."

To the 14,000,000 visitors who have already come to this happy place—from celebrities to private citizens—that cordial welcome has been their invitation to pure pleasure and the excitement of things to come.

Here are some of them enjoying the delights of Disneyland, and with whom you can then share the satisfying memory of a visit to Walt Disney's Magic Kingdom.



Stars Dick Powell and June Allyson and family are among the millions who have found the Casey, Jr. ("I-thought-I-could-I-thought-I-could") fun-filled train ride only part of a happy family time in Disneyland.

INFORMATION FOR YOUR VISIT TO DISNEYLAND

Where is Disneyland located?

You will find Disneyland in Anaheim, 22 miles southeast of Los Angeles. From Los Angeles, take the Santa Ana Freeway and turn right at Harbor Blvd. From other parts of Southern California, consult the map on the back cover.

What hours is Disneyland open?

During the Spring and Summer season, the Magic Kingdom operates on the following schedule:

From March 1 through May 26, the Park is open five days a week—Wednesday through Sunday—from 10:00 a.m. until 7:00 p.m. The Park is closed Monday and Tuesday in this period for necessary refurbishing, maintenance, etc., with the following—

EXCEPTION: Disneyland is open every day of the week, from March 18 through April 5 for the annual Easter Festival.

Beginning May 27, and continuing for the Summer season (ending on Labor Day) the Magic Kingdom will be open every day.

How long should we plan to stay?

Disneyland is so designed that whether you have two or three hours, or a full day or two, you can enjoy a visit to the Magic Kingdom. Surveys reveal that most visitors stay five or more hours to see all of Disneyland's wonders. For visitors with more limited time, the Guided Tours are an excellent way to enjoy Disneyland's highlights.

How much will a visit to Disneyland cost?

For the most enjoyable and thriftiest way to visit Disneyland, we suggest the money-saving "Jumbo 15" or "Big 10" Ticket Book plans. The "Jumbo 15" plan offers admission to Disneyland and your choice of 15 attractions from a list that includes every attraction in the Magic Kingdom for a single price of \$3.25 for children, \$3.75 for juniors and \$4.25 for adults. The "Big 10" plan gives you admission and your choice of 10 attractions from the same list for \$2.25 for children, \$2.75 for juniors and \$3.25 for adults.

General admission to Disneyland for children under 12 is 50 cents; for juniors (ages 12 to 17) 75 cents; and for adults \$1.00. General admission tickets entitle guests to admission to Disneyland's major lands: Main Street, Tomorrowland, Fantasyland, Adventureland and Frontierland.

All of the above prices are effective until June 1, 1959.

Does Disneyland have restaurants or food facilities?

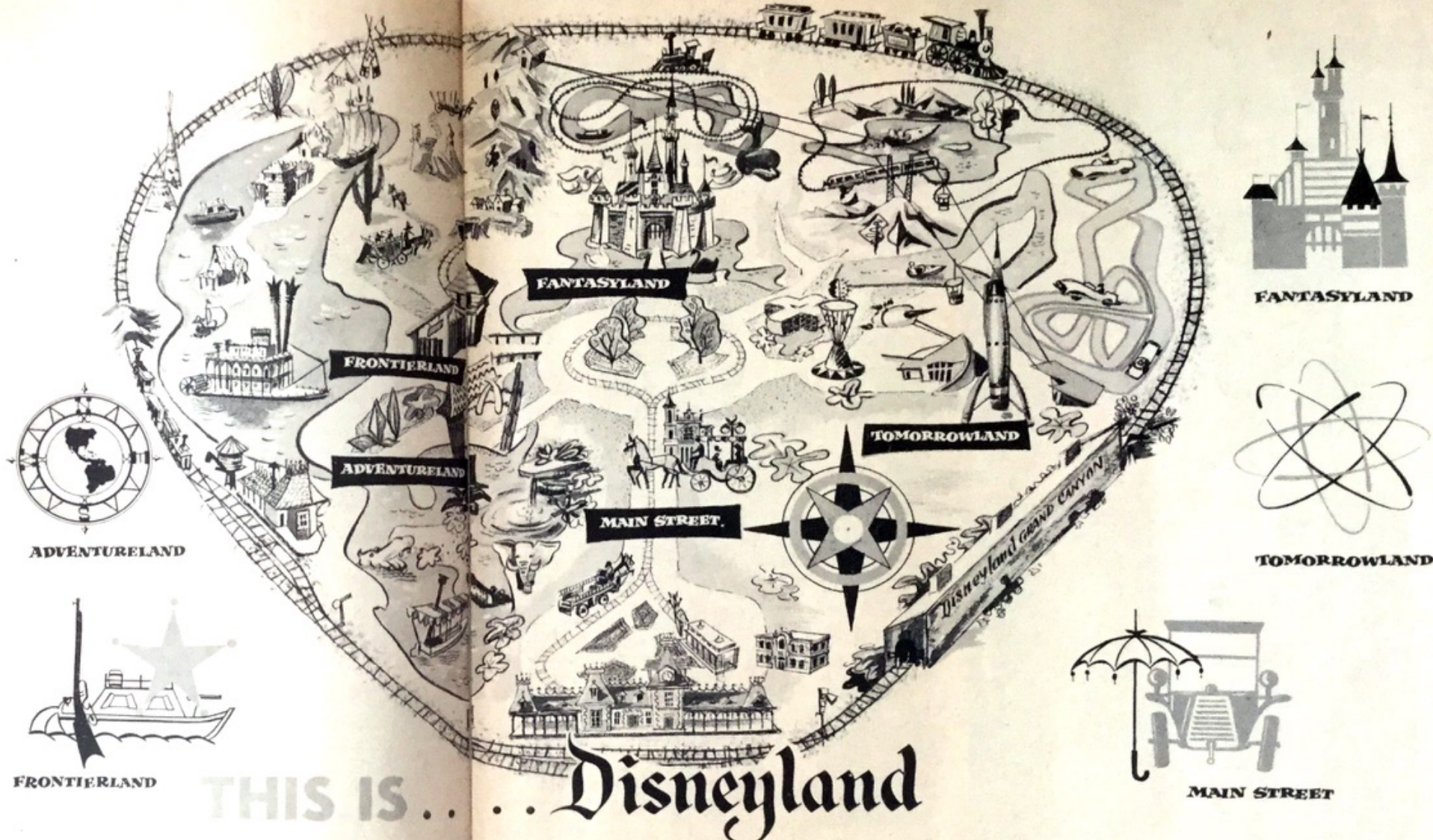
Definitely. There are 18 fine restaurants and "refreshment corners" at Disneyland, plus the Gourmet Restaurant at the Disneyland Hotel. Their specialties cover a complete range of food, from full course steak dinners to quick snacks, sandwiches and salads.

Is Disneyland served by public transportation?

Buses, limousines and helicopters arrive at Disneyland on a regular schedule several times every day. Tanner Gray Line Motor Tours, Southland Bus Lines, Pacific Greyhound Lines and the Metropolitan Transit Authority all offer bus service from various Southern California points to the Magic Kingdom. Tanner Gray Line and Airport Coach Service offer limousine service to Disneyland. Los Angeles Airways operates daily helicopter flights to Disneyland's own Heliport. Consult the individual companies for information and time schedules.

Where can I get further information about Disneyland?

For information on anything not covered here, write or phone: Director of Customer Relations, Disneyland, Anaheim, California.



FRONTIERLAND

THIS IS... **Disneyland**

FANTASYLAND

TOMORROWLAND

MAIN STREET

Your visit to Disneyland will be a new experience in fun-filled entertainment... Disneyland, Walt Disney's Magic Kingdom, is an entirely new concept in entertainment for every age...

There are many adventures at Disneyland to interest each individual member of the family... visitors actually participate in diversified experiences found in more than 40 unique attractions... 15 free shows and exhibits... and 50 shops and stores...

Here are a few of the adventures awaiting you at the world's most popular visitor attraction:

1900-era **MAIN STREET** is "everybody's home town"... horse-drawn trolleys and surreys... "horseless carriages"... an old-time apothecary, ice cream parlor and market house... gaslamps... the leisurely manner and atmosphere of yesteryear... band concerts and parades... trains leaving for a trip through the Grand Canyon... silent movies featuring early-day stars at the Main St. Cinema... this is the turn of the century and its happy memories...

VACATIONLAND

ADVENTURELAND... a jungle boat cruise down tropical rivers... exotic and mysterious, far from civilization... lush flowers and plants... bright orchids in an Amazon rainforest... life-like alligators and hippos "attacking" your boat... dark jungles... tall Watuti headhunters... giant gorillas... lions and tigers... lofty giraffes... nature's wonderland in all its beauty... and the Adventureland Bazaar, with native curios from all over the world...

The early West in **FRONTIERLAND**... tribute to the American pioneer trail-blazers... the broad Rivers of America... the *Mark Twain* paddlewheel riverboat... the *Columbia*, full-size 1790 sailing ship... Indian canoes, log rafts and keel-boats... picturesque Rainbow Desert... Stagecoaches, Conestoga Wagons and mule pack trains cross its cactus-studded paths... a Mine Train chugs through the desert into underground Rainbow Caverns... site of multi-colored waterfalls, stalactites and stalagmites... Tom Sawyer Island, an adventurer's paradise... and the Plains Indian Village...

VACATIONLAND

FANTASYLAND, world of imagination... storybook favorites "come to life" in exciting and happy adventures... fly with Peter Pan over Moonlit London... visit the Diamond Mine of the Seven Dwarfs with Snow White... race thru Old London Town with Mr. Toad... enter the Rabbit Hole to take part in Alice's Adventures in Wonderland... Sleeping Beauty Castle... Storybook Land, miniature world viewed from European canal boats... Dumbo the Flying Elephant... a land dedicated to the young-in-heart of all ages...

World of the Future... **TOMORROWLAND** brings it to life... rocket ships "blast off" to the Moon... speedy Astro-Jets and sleek Autopia "Freeway of the Future" cars... the Skyway, a lofty flight high above Disneyland... the streamlined Viewliner train... entertaining, educational exhibits sponsored by American industry... the Satellite View of America, from high above the Earth's surface...

All this, and much more, is Disneyland—hours and days of diversified, unique entertainment!



Passengers depart from this dock for a thrilling jungle river ride.



This is the *real* way to "get away from it all" . . . !

If you've ever dreamed of doing just that (and who hasn't?) this is your opportunity—aboard a cruiser on the Jungle Rivers of the World in Adventureland at Disneyland.

But be prepared for thrills and chills, for surprises and excitement, for just plain fun . . . for this world-famed jungle river ride has all of that—at every turn!

Adventureland in the Magic Kingdom offers you and your family one of the most unusual experiences you'll ever have. It's a visit to a "country" far removed . . . an exciting and sometimes enchanting journey into a land in itself.

Seemingly quiet, docile alligators are apt to slide silently toward your boat, cavernous mouths wide open . . . a huge python, with vise-like grip, may slither down a dead tree overhanging the water . . . ponderous, lazy-looking hippos may charge your boat . . . headhunters (cannibals all) may spring out most unexpectedly from behind the tall jungle grass . . . and a far-from-gentle bull elephant may trumpet his warning from the nearby shore . . . a short distance away, water buffalo watch you ominously . . . and as you round still another bend in the waterway, fierce-looking (but usually friendly) natives may be seen in a ritual dance.

All this—and more—awaits the adventurous traveler down Disneyland's Jungle Rivers of the World. Aside from the many "dangers," there's beauty to behold, too: rare plants and colorful flowers from far-off places . . . huge and brilliantly-hued butterflies . . . the serene, deep green "rain forest."

Not to be overlooked during your cruise down the Jungle Rivers of the World are the descriptive references of your pilot to the exotic beauty of Adventureland . . . and his "warnings" about the "hazards" you will encounter, the "dangers" that lurk in this jungle for the unwary traveler. But—if you listen well—you'll survive . . . and remember your exciting voyage.

So, take that trip "away from it all." With experienced cruiser pilots, dealing with the "dangers" daily, you'll be in good hands . . . and they'll bring you back safely, even through the most treacherous part of the entire ride—your return to civilization!

Survival of the fittest is portrayed in the Adventureland jungle as this family of hungry lions "feeds" on a zebra just struck down.



RED WAGON RESTAURANT



Visit Disneyland

AND DINE IN AUTHENTIC
GAY 90'S ATMOSPHERE

Gay memories become glamorous realities at the air-conditioned RED WAGON RESTAURANT. Complete luncheons and dinners. Children's dinners from \$1.00. Also steaks and chops from our charcoal broiler. Swift's quality foods served exclusively in Disneyland.

ADVENTURELAND

It's a close call at Schweitzer Falls as a jungle river cruiser veers near the shimmering vale of water. It's a near miss every time—so far!



A monstrous bull elephant, above, surveys the river from his vantage point along its bank while (above right) a huge python and ferocious alligators silently await the approach of a river craft.



Voyagers down Disneyland's jungle river in Adventureland are watched themselves in this case by two towering giraffes. These are the quiet ones—much unlike the other jungle inhabitants that appear at every bend and turn of the river.

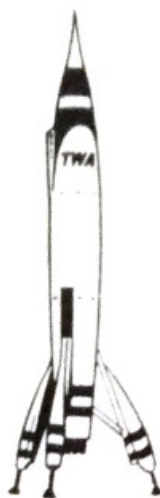
VACATIONLAND

WORLD'S FINEST LOW-COST AIR TRAVEL

TWA's 
Golden Banner
 DE LUXE COACH SERVICE
 Non-stop, in Super G's and JETSTREAMS

AND

SKY CLUB COACH SERVICE



Big, dependable 4-engine skyliners, flown by the pilots who fly the world—U. S. and international tourist flights—hot meals and beverage service at moderate cost.

Call your Travel Agent or nearest TWA office for information and reservations. Ask about the special Disneyland tours.

FLY TWA
 TRANS WORLD AIRLINES
 Official Airline to Disneyland



SEEIN' SOUTHERN CALIFORNIA

AS A SERVICE TO SOUTHLAND VISITORS, VACATIONLAND PRESENTS THIS PAGE ABOUT SOUTHERN CALIFORNIA ATTRACTIONS AND THE "SPOTLIGHT ON THE CALIFORNIA MISSIONS" FEATURE ON PAGES 7 AND 8. BELOW ARE CAPSULE SUMMARIES OF POINTS OF INTEREST, SPECIAL EVENTS AND HISTORICAL LANDMARKS TO HELP YOU IN PLANNING YOUR STAY IN THIS AREA.

"SLEEPING BEAUTY." Walt Disney's finest in animation artistry. Fox Wilshire Theater, Beverly Hills. Call OL. 2-1303.

***KNOTT'S BERRY FARM.** Re-created Ghost Town, replica of 1849 Gold Rush Days. Fine chicken and steak dinners. Noted for berry preserves. Six miles from Disneyland in Buena Park. Open daily, 10-9:30.

***FOREST LAWN MEMORIAL PARK.** Famed for statues, beautiful stained glass windows and paintings ("The Crucifixion," "The Last Supper"). San Fernando Road at South Glendale Avenue. Open daily, 8:30-5:30.

***SANTA'S VILLAGE.** Reindeer-drawn Candy Cane Sleigh rides, Santa's Home, Mrs. Claus' Kitchen, others. In San Bernardino Mountains, near Lake Arrowhead. Open 11-5, Sunday 10-5.

***SAN DIEGO ZOO.** Nation's largest. Rare and unusual zoo animals, also hippos, tigers, bears, gorillas, etc. Only zoo with guided bus tours. In Balboa Park, San Diego. Also new Children's Zoo, featuring direct contact with harmless animals. Open daily, 9-dusk.

***MARINELAND OF THE PACIFIC.** Three-ring sea circus featuring the only two trained whales in the world, performing porpoises and seals in continuous shows every day of the year, 10 a.m. to sunset. On the ocean shore 25 miles south of Los Angeles.

NEWPORT DUNES. Orange County's new recreation area, located on the Newport Beach Upper Bay, 12 miles from Disneyland. Swimming, boating, other recreation facilities.

FARMER'S MARKET. Famous shopping and dining location. Diversified stall stands with fresh foods, produce in outdoor setting. At 3rd St. and Fairfax, Los Angeles. Open 9-7, closed Sundays.

APPLE VALLEY. Desert playground-resort within easy driving distance of Los Angeles. Horseback riding, swimming, golf course.

OLVERA STREET. Glimpse of old (18th Century) Mexico in downtown Los Angeles. Preservation of one of city's earliest streets. Souvenirs, restaurants.

MISSIONS. From Santa Barbara to San Diego. Built by the Spanish Franciscan fathers and conquistadors in 18th Century. Including San Diego, San Luis Rey (near Oceanside), San Juan Capistrano (near Laguna), San Gabriel, San Fernando, San Buenaventura (near Ventura), Santa Barbara.

LOS ANGELES COUNTY MUSEUM. In Exposition Park, adjacent to Los Angeles Memorial Coliseum. Art galleries, historical and scientific presentations. Open 10 a.m. to 5 p.m., closed Mon.

HEARST SAN SIMEON STATE HISTORICAL MONUMENT. Hearst's former castle, San Simeon, California. 42 miles north of San Luis Obispo, 9 miles north of Cambria on Highway 1. Winter schedule, weather permitting: Casual visitors 9 a.m.-1 p.m., Organized group tours, reserved

in advance, 1:30-3:00 p.m. Information obtained from Monument Supervisor or District Superintendent, Division of Beaches & Parks, Monterey.

HUNTINGTON LIBRARY AND ART GALLERY. Home of Gainsborough's "Blue Boy," and many other famed paintings. Also collectors items in books, decorative arts. In San Marino, near Pasadena. Open 1-4:30 p.m., closed Mon.

CALIFORNIA MUSEUM OF SCIENCE AND INDUSTRY. In Exposition Park, with exhibits portraying California's agricultural, industrial and scientific development. Open daily, 10 a.m. to 5 p.m.

GRAUMAN'S CHINESE THEATRE. On Hollywood Blvd. Fingerprints, hand and foot prints and signatures of motion picture stars in cement outdoor "lobby" of the theatre.

CHINATOWN. Downtown Los Angeles. Restaurants, souvenirs, etc.

LOS ANGELES HARBOR, and port area. One of the major ports in United States. Boat cruises from Long Beach-San Pedro area.

NEWPORT-BALBOA HARBOR. Famed for sailing, yachting. In Orange County, 15 miles from Disneyland.

LAGUNA BEACH. Artist colony with picturesque beaches. South on Highway 101. In Orange County, about 20 miles from Disneyland.

CATALINA ISLAND. 26 miles off California Coast, reached by boat or air. Glass-bottom boats, bird sanctuary, swimming, off-shore fishing.

PALM SPRINGS. Popular desert playground-resort. Swimming, golf, outdoor sports.

UNDERGROUND GARDENS. Subterranean world carved over a 38-year period by one man, who made it his home. In Fresno. Open 9-4 daily.

MOVIE STUDIOS. Tanner Gray Line Motor Tours are your ticket to see the inside of a studio. Otherwise, no admission.

"CINERAMA SOUTH SEAS ADVENTURE." Newest Cinerama production at Warner's Theater, Hollywood. Call HO. 3-6891.

HORSE RACING. At Santa Anita race track in Arcadia, harness racing March 12 through April 5. At Phoenix, Ariz., Turf Paradise, racing Wednesday, Friday, Saturday and Sunday, Feb. 25-May 3.

SPECIAL EVENTS. March 1 to Easter Sunday, Santa's Village Easter Festival, San Bernardino Mountains; March, California International Flower Show, Hollywood Park racetrack; March 13-29, California Hobby Show, Los Angeles Shrine Auditorium; March 21, Palm Springs Police Show and Performance of Stars.

**See Disneyland map on back cover for location.*

LOOK! FOR THIS SIGN

ONE BLOCK SOUTH OF DISNEYLAND MAIN GATE

COFFEE SHOP • DINING ROOM • CAR SERVICE • BANQUET FACILITIES • COCKTAIL LOUNGE • QUALITY



JEFFERSON 4-5050

The California Missions

Long before California acquired fame for many things—still another cultural facet was founded . . . and continues to live on agelessly today.

This is the Franciscan Mission Chain, lining the Coast from San Diego to locations north of San Francisco. There are more than 20 such Missions, the first of which was San Diego de Alcalá, founded July 16, 1769, by Father Junipero Serra.

These Missions—most of which are still active and flourishing—are one of the outstanding attractions for the visitor to California. San Juan Capistrano, some 30 miles south of Disneyland, is where the famed swallows make their seasonal home, arriving each year on St. Joseph's Day, March 19, and departing on St. John's Day, October 23.

And here, as at any of the other Missions, the visitor can sense the peace, the tranquility and the inspiration that was their reason for being, that is their reason for continuing endlessly amidst the haste and the hurry of modern times.



At San Fernando Rey de Espana, this statue of Father Junipero Serra, befriending an Indian boy, is dedicated to the memory of the priest—pioneer, administrator, zealous missionary and founder of the Franciscan Mission Chain.

There are material things to look for, too. Mission San Luis Rey de Francia, near Oceanside, is noted for its typically Moorish architecture. Its energetic founder, Padre Peyri, introduced the feathery pepper tree in California from seeds brought by sailors from Peru. This area is now noted as a center for avocado groves.

Just north of Los Angeles is San Fernando Rey de Espana Mission where gold was found in an onion bed six years before discovery at Sutter's Mill. Oil—"black gold"—also was discovered in this region in 1835, but it was 1876 before a well, still producing, was dug by hand thirty feet deep.

East of Los Angeles is San Gabriel Arcangel Mission, noted for the "Mother Vineyard" from which all the Mission vineyards were started, and where one of the original grape cuttings brought from Mexico still survives. These Mission vineyards were the beginning of today's production of 93% of the nation's grapes.

In 1781, "Pueblo de Nuestra Senora la Reina de Los Angeles de Porciuncula"

(Continued on next page)



The ancient tranquility and simple beauty of the main altar of the Old Mission at San Luis Rey presents a perfect sanctuary for prayer.

The Santa Barbara Mission seems to symbolize the strength and solidarity of worship through the ages.





Disneyland RECORDS

Help You
Remember
Your Visit
To...

Disneyland

© Walt Disney Productions

Throughout the year, re-live your trip to Disneyland with these outstanding Disneyland Records:

- WDL 4004 Walt Disney's Musical Tour of Disneyland
- WDL 3035 Date Nite at Disneyland (with the Elliott Brothers Orchestra at the Plaza Gardens)
- WDL 3001 Life of the Party (Vols. I & II) on the Main Street Player Piano
- WDL 3002 Band Concert
- WDL 3005 Echoes of Disneyland (Wurlitzer Organ) and tops with the small fry
- WDL 3012 Meet Me Down on Main Street (Mellowmen Barbershop Quartet)
- WDL 3013 Golden Horseshoe Revue
- ST 3901 Jiminy Cricket's Day at Disneyland

All \$3.98 Disneyland Records available inside the park at \$2.98

(Continued from previous page)

(The Town of Our Lady Queen of the Angels of Porciuncula) was founded. The old Church still stands on the Plaza where Mexican craftsmen ply their trades—in Olvera Street, part of the village that grew to become the City of Los Angeles.

"Queen of the Missions" is Santa Barbara, some 95 miles north of Los Angeles. It is the only Mission in which the altar light has never gone out since its founding—this was December 4, 1786. Also, because of its continuous occupancy, the Mission closely resembles its original appearance. This is especially true of the interior, where even the rooms which house the Mission's museum have been in uninterrupted use for more than 160 years.

But no matter which Mission or Missions you may visit, you'll be impressed with their ageless beauty, and the evidence of their magnificent contributions to today's cultural and material things.

Most Missions are open to the visitor seven days a week, from eight o'clock in the morning until 5:00 p.m., except for periods of worship. Generally, there is only a nominal admission charge . . . for most, it's simply a contribution.

So, when you visit any of them—and when you leave your own contribution—remember that it can hardly be more than a mere token for the magnitude and the greatness given to the region by the Franciscan Mission Chain in California.



The Mission San Juan Capistrano casts its reflection in a quiet pool. Nearby the famed white swallows make their seasonal home in the ruins of the original buildings.

In just 35 minutes you can be in beautiful **LAGUNA BEACH**



Gem of the Pacific Riviera. Fine Continental Restaurants, unique shops. Luxurious and modest Hotels & Motels. Magnificent scenery. All the sports. Be sure to visit this charming year-round resort.

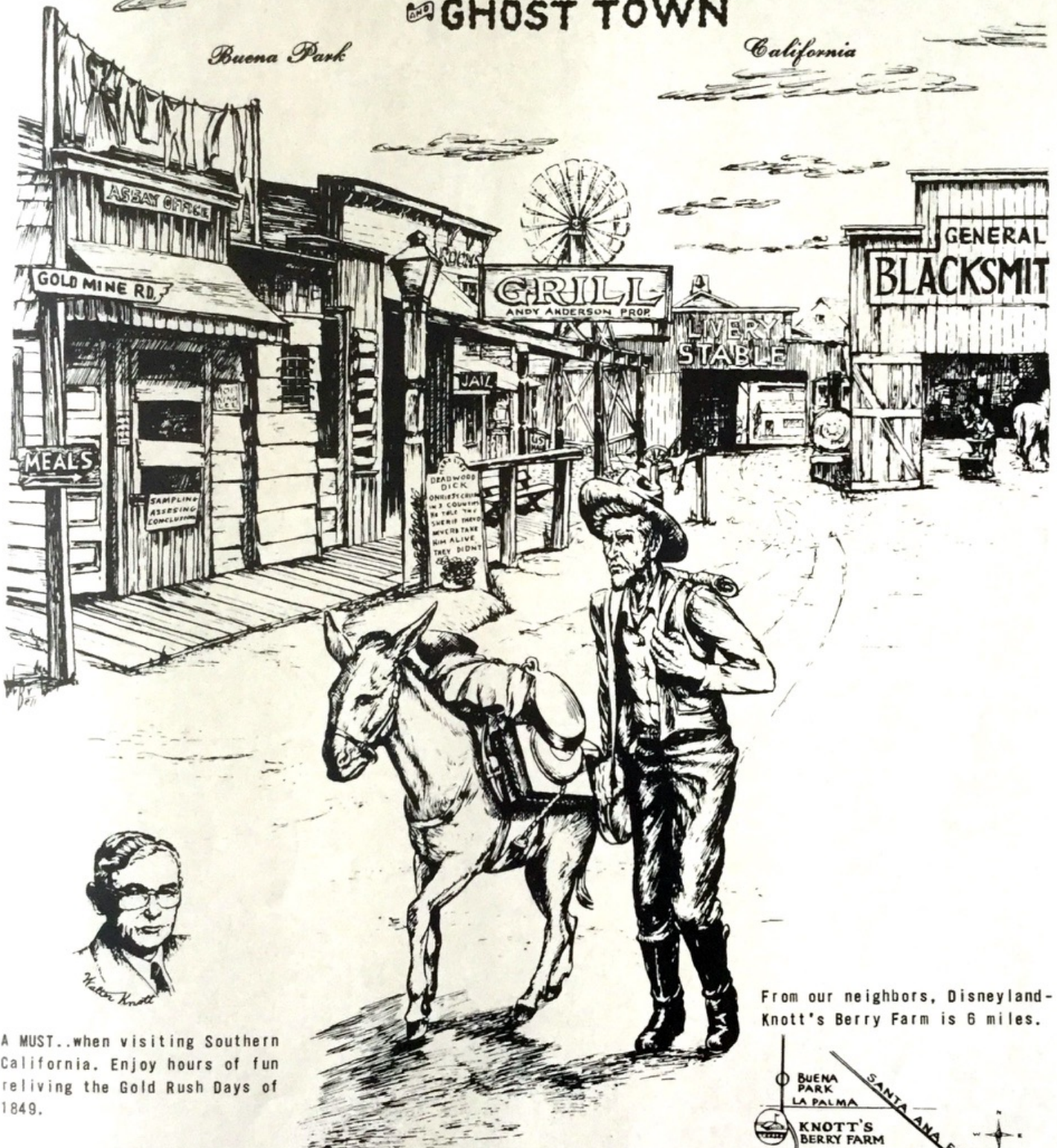
HOLIDAY BUREAU 485 Coast Blvd. N. HYatt 4-6969

KNOTT'S BERRY FARM

AND GHOST TOWN

Buena Park

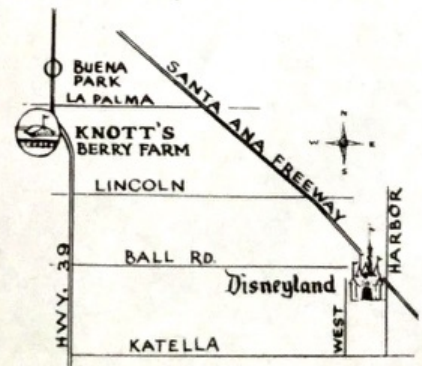
California



A MUST...when visiting Southern California. Enjoy hours of fun reliving the Gold Rush Days of 1849.

CHICKEN DINNER RESTAURANT
STEAK HOUSE **UNIQUE SHOPS**
ENTERTAINMENT

From our neighbors, Disneyland-Knott's Berry Farm is 6 miles.



KNOTT'S BERRY FARM OWNED AND OPERATED BY THE FOUNDERS, MR. AND MRS. WALTER KNOTT AND FAMILY



Tomorrowland's colorful entrance walk leads past the World Clock. In the background is TWA's tall rocket pylon, symbol of this world of the future.



The leisurely life of 1890-1910 prevails on Main Street. Horse-drawn surries and the double-decked Omnibus are reminders of bygone days.

a few highlights

of your tour through....

Disneyland

From the lofty Skyway, visitors look down on all Disneyland. This scene is in Tomorrowland, where many Futuristic Exhibits are sponsored by American Industry.



VACATIONLAND



Adventureland's exciting jungle boat cruise, where life-like hippos "attack" your canopied tropical craft.

VACATIONLAND



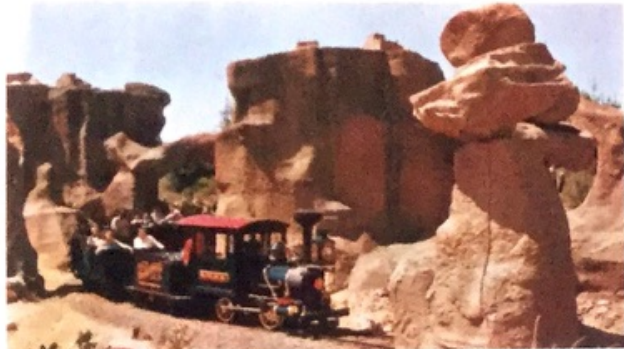
First view of Disneyland: the Santa Fe & Disneyland excursion train pulls into the Main Street station, where passengers board for a trip through the Grand Canyon.



A rollicking Western stage show with can-can dancers, singing and comedy is featured at Pepsi Cola's Golden Horseshoe Revue in Frontierland.



Exotic atmosphere of tropical lands, the Orient, Africa and Latin America, is the setting for curio shopping at the Adventureland Bazaar.



The Frontierland Mine Train travels across the Desert, passing under balancing rock formations. Climax of the journey is colorful underground Rainbow Caverns.



On the bustling Frontier river, you can "book passage" on the riverboat "Mark Twain," Indian canoes, or (not shown) the 1790 ship "Columbia." At left is Tom Sawyer Island.

**THERE ARE SOME THINGS YOU
CAN'T DO IN APPLE VALLEY . . .**



Lloyd Mangrum



But golf isn't one of them. Ask Lloyd Mangrum, one of the greatest golfers of all time! Ask Billy Casper, one of the top money winners of 1958! They'll tell you Golf is Great at Apple Valley—every day of the year!

HAVE A GOLFING VACATION!

Now try the new "FIVER" plan . . . included are

- Luxurious accommodations for 5 days and 5 nights
- Sunday "Dinner from Dixie"
- Genuine Western Outdoor Steak Fry
- Hospitality Hour and Continental Buffet Dinner
- Barbecue Steak Dinner al fresco
- Social Hour, Complimentary Punch Bowl and Hot-and-Cold Smorgasbord Dinner

FIVE FULL DAYS . . .

FIVE FULL NIGHTS

Just **\$50** per person
double occupancy

Includes: Golfing privileges at the Apple Valley Country Club (Green fees just \$3.00 weekdays, \$5.00 weekends and holidays)



Billy Casper

At the Apple Valley Inn it's always time for swimming, fishing, riding, shuffleboard, tennis and other outdoor activities!

For information or reservations, see your travel agent or contact

APPLE VALLEY INN

in the Golden Land of APPLE VALLEY, CALIF.

Phone: Apple Valley 7-7271 Teletype: Victorville Cal 8788

or call your convenient Apple Valley Office

LOS ANGELES	Stanley 3-3560	RIVERSIDE	Overland 3-8771
	RYan 1-7891	LONG BEACH	Garfield 7-0989
HOLLYWOOD	Hollywood 2-0978	SAN DIEGO	ATwater 1-5536
ENCINO	State 9-8173	SAN FRANCISCO	EXbrook 7-2717
PASADENA	SYcamore 6-1488	DISNEYLAND-SANTA ANA	Jefferson 1-2933

"Make Mine Music . . ."

Whatever your pleasure, Walt Disney's Magic Kingdom has it.

Perhaps you prefer a promenade into the past (Main Street, U.S.A.) . . . a thrilling excursion to the tropics (Adventureland) . . . a first-hand look at America's exciting history (Frontierland) . . . a trip through a most imaginative realm (Fantasyland) . . . or a view of the wonderful future (Tomorrowland). Disneyland has it. Yet, if you're like any of the 14,000,000 other visitors to Disneyland, you'll enjoy them all.

And *everyone* likes music. Disneyland has that, too—presented every day by Vesey Walker and the Disneyland Band.

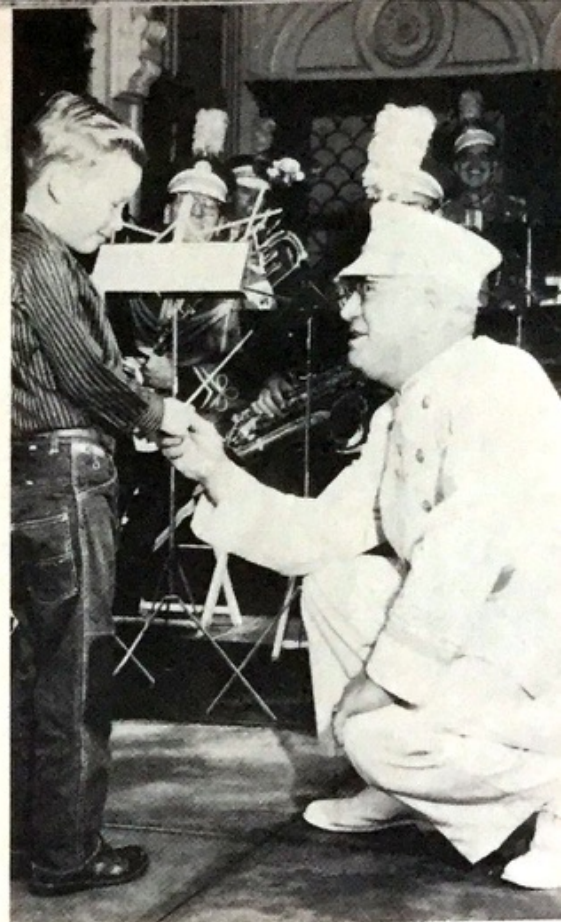
Vesey is nationally known for his work in the field of music. Many "town"

bands across the country were organized by him, and continue as a popular part of community enjoyment.

Sixteen top-flight musicians make up the versatile Disneyland Band, which plays everything from stirring marches or long-remembered overtures to perennial favorites and the latest "pops."

Individual music-makers form smaller units—the Strawhatters and the Keystone Kops—to provide still other free entertainment: Dixieland jazz, for example, and the swinging, sweet music of the sax quartet.

There's music for all in the Magic Kingdom . . . and for everyone, "Make mine music" is one of the most enjoyable requests during a Disneyland visit.



Little Robin Hendricks, son of Mr. and Mrs. N. F. Hendricks, visiting Disneyland from San Diego, meets Vesey Walker and the Disneyland Band before fulfilling that universal wish, "I want to lead a band . . ."



The 16-piece Disneyland Band, led by Vesey Walker, parades and plays often every day in the Park. Their repertoire includes a wide range of selections—many of them popular favorites played on request from guests.



The Strawhatters—part of the Disneyland Band—appear frequently in the Dixieland bandstand in the New Orleans section of Frontierland.



Another group from the Band—the Keystone Kops—are "regulars" along Main Street, U.S.A. in Disneyland.

Over the Rainbow



A group of young guests at Disneyland travels through the colorful Rainbow Desert by hardy mule pack train—one of several means of transportation across the "rugged" countryside.



Offering metropolitan hotel facilities in a country club setting. Unique interior decor with rare works of art and antiques. A 15-acre garden estate, just five minutes from Disneyland. SWIMMING POOL, RESTAURANT, COFFEE SHOP, AND COCKTAIL LOUNGE.

Advance room reservations requested:
Call Jefferson 7-4020

Greenbrier Inn
GARDEN GROVE, CALIFORNIA

10381 Garden Grove Blvd.
Garden Grove, California

Among America's most colorful western regions are its deserts, with their peculiar plant life, rock formations, Indian dwellings and other sights to be seen only in this apparently barren land.

For you to view—aboard authentically-styled mine trains, Concord Stagecoaches, Conestoga Wagons, or by mule pack train—is one of the most famous of all: the amazingly beautiful Rainbow Desert at Disneyland.

No matter which method of transportation you choose, you'll travel in comfort on a winding route through the Desert, seeing at first hand multi-colored plants and flowers, unique rock formations and miniature Indian villages.

(And as a suggestion, be sure you watch for the unusual stance and shape of Disneyland cactus plants!)

Your trip by mine train, from the little pioneer town to seemingly vast desert reaches, will take you through still another part of the Desert at Disneyland—the Rainbow Caverns and their breathtaking beauty. Within their cool depths, you will see the distinctive shapes of stalactites and stalagmites, and many-hued waterfalls cascading about you. It's a quiet, restful ride that will leave you impressed with the sheer beauty and thrilling color combinations all about you.

To travel the Rainbow Desert by other means, you have a wide choice: the more hardy "pioneers" may take the mule pack train, journeying through the Desert astride a sure-footed, gentle burro . . . or you may take either the Conestoga Wagon or the Concord Stagecoach. Each has a particular appeal, taking you back to a period in America's lusty growth—but each is a comfortable ride, designed to make your "desert cruise" most enjoyable.

So tour the Rainbow Desert at Disneyland! It's a scenic sight you'll long remember!



A "fast" Concord stagecoach rounds a rocky bend in the Rainbow Desert as it passes clusters of cactus on the otherwise "barren" wasteland.

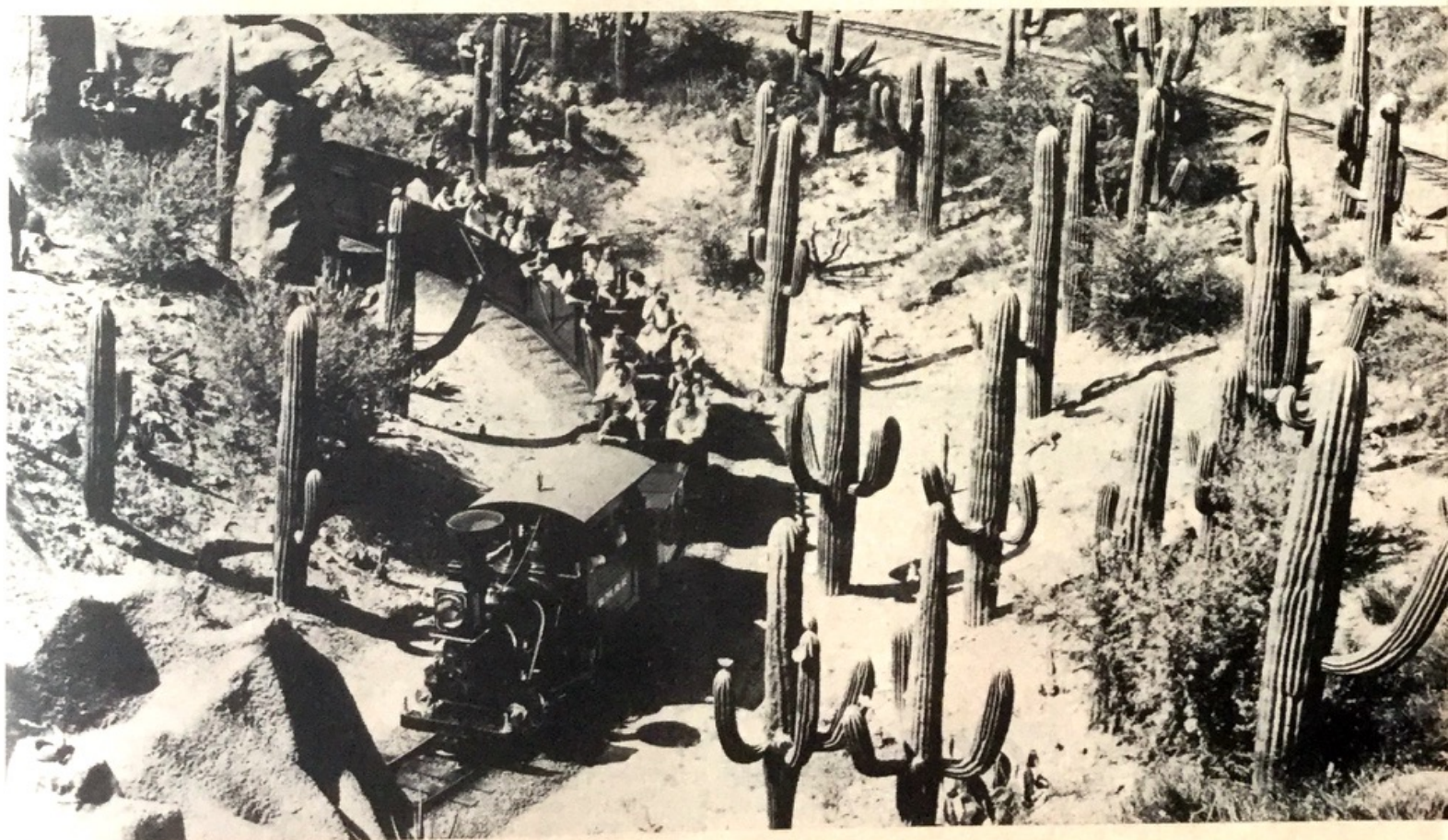
(Desert)



For the less hardy "pioneers," the Rainbow Desert can be traversed by train, which winds across this picturesque area.



Still other visitors view the wonders of the Disneyland Desert from the shade of a sturdy Conestoga wagon.



In this panorama, precariously-perched rocks and a profusion of pillar-like plants provide the utmost authenticity to the Rainbow Desert.

WALT DISNEY'S Sleeping Beauty

Here's more than a mere evening of fine entertainment . . . here's an experience for the whole family!

Six years in the making, a \$6,000,000 undertaking, Walt Disney's "Sleeping Beauty" has been acclaimed as the ultimate in cartoon artistry.

This fabulous feature is a perfect combination of the very best: the full range of high fidelity stereophonic sound, filling the theater with delightful, mood-making music which flows in full range from multiple speakers . . . Technirama-70, a wide screen innovation projected from Technicolor film twice the size of ordinary film, treating the viewer to perfect, undistorted visibility, no matter where he may be seated . . . and the wonderful skill of Walt Disney's artists, technicians and other fine craftsmen, whose efforts are blended to produce the smoothest, most life-like animation—all presenting a most unique treat in cartoon entertainment.

There's something for everyone in "Sleeping Beauty." The youngsters will be fascinated by the age-old, enduring story of the beautiful princess, and the ultimate triumph of true love as her prince awakens her from the deep sleep and the evil spell of the cruel witch.



They will love, too, the three good fairies whose efforts to protect the princess are as good as their very nature—intentions that sometimes go wrong, despite good fairy magic. The witch, dealing in evil, is a master in her own way, exemplifying wrong-doing—and the final, unquestionable result of such activity. The youngsters will get that point, too, entertainingly but impressively.

As for their elders, the "Sleeping Beauty" story will recall pleasantly for them their earlier years, and perhaps their first acquaintance with the beautiful princess. But more: they will enjoy the film for its honest perfection, its col-

orful presentation and beauty, and its glorious music.

"Sleeping Beauty" is the pinnacle of progress by the imaginative Walt Disney Studios, and most certainly a triumph in the arts.

The full-length feature opened January 29 at the Fox Wilshire Theater in Beverly Hills, the only theater in the Los Angeles area equipped to introduce "Sleeping Beauty" in the spectacular scope conceived by Walt Disney.

Since it is a limited engagement, check the Wilshire Theater for this showing . . . make it a must as you "see Southern California."

DON'T FAIL TO SEE THIS OUTSTANDING ATTRACTION DURING YOUR VISIT TO SOUTHERN CALIFORNIA. CHECK THE FOX WILSHIRE THEATER IN BEVERLY HILLS FOR THE SHOWING OF THIS FABULOUS FULL-LENGTH FEATURE!

4 WONDERFUL WAYS TO REALLY SEE Disneyland

1 - via GUIDED TOUR!
Visit Disneyland via luxury Tanner Gray Line Coach, with experienced guide to point out the sights. Reasonable rates for half-day and all-day tours including transportation and sightseeing.

2 via Avis RENT-A CAR!
A new Ford or other fine car will meet you at airport or depot or be delivered to your hotel in minutes. Drive it, then dismiss at destination, no extra charge.

3 - in Style via LIMOUSINE!
Luxurious 7-passenger limousines for private sightseeing . . . your liveried chauffeur is an experienced guide. Special Disneyland itinerary can be custom-planned for your party.

4 on an Avis DISNEYLAND HOTEL PACKAGE TOUR!
Rent a fine Ford or other make, and stay at fabulous Disneyland Hotel, on special two, three and four day package tour.



Contact your travel agent or write to:

AVIS-TANNER GRAY LINE

MADison 8-3111

1207 W. 3rd Street, Los Angeles 17, California

18 of the **Finest MOTELS** in America

Located in the Heart of Southern California's . . .



HUB OF HAPPINESS

Adjacent to Fabulous DISNEYLAND

Just Minutes to . . .

- ENCHANTING BEACHES
- EXCITING KNOTT'S BERRY FARM
- BEAUTIFUL SAN JUAN CAPISTRANO
- METROPOLITAN LOS ANGELES & HOLLYWOOD
- MOUNTAIN & DESERT PLAY AREAS



18 OF THE NEWEST, MOST MODERN MOTELS • EACH WITH • SWIMMING POOLS • AIR CONDITIONING • TV • FAMILY UNITS



CANDY CANE Motel

1747 So. Harbor Blvd.
Anaheim, Calif.
Phone: PROspect 4-5284



RED BIRD MOTEL

2176 So. Harbor Blvd.
Anaheim, California
Managers
Mr. & Mrs. R. F. Sarlbom
JEfferson 4-4075
"Less Than A Mile South of Disneyland"



Color T.V. • Hi-Fi
Putting Greens

1750 Harbor Blvd.
Anaheim, Calif.
Phone: PROspect 4-2460

"Across Harbor Boulevard
from Disneyland"



505 West Katella Avenue
Anaheim, California
PROspect 4-8710

Room Phones • Adjacent to Restaurants

Fantasy Motel

75 Units with Dressing Rooms
Tub-Showers with Infra-Red Heat
1734 Harbor Blvd.
Anaheim, California
PROspect 4-8111

Heidi Motel

(South Entrance of Disneyland)
815 W. Katella — Anaheim, Calif.
Hi-Fi • Tubs & Showers
Beauty Rest Mattresses
KE 3-1979

Between 2 Entrances & Adjacent to Disneyland

Sir Kumbhar MOTEL

Telephone for Reservations: 615 W. Katella
KE 5-5445 Anaheim, Calif.

MOTEL

Waikiki



631 W. Katella Ave.
Anaheim, California
KEystone 5-9410



On Quiet West Street

Lampighter Motel

ACROSS FROM DISNEYLAND

1759 S. West St.
Anaheim, California PROspect 4-3583

Hi-Fi • Phones

Musketeer Motel

Adjoining Disneyland Parking Lot
South Entrance
733 W. Katella
Anaheim, California
Phone: PR 4-8065

ANAHEIM TRAVELODGE

Kitchen Apts. • Family Rooms
Three Blocks from DISNEYLAND

1166 W. Katella Ave.
Phone PR. 4-7817



STARDUST Holiday MOTOR HOTEL

1057 W. BALL ROAD ANAHEIM CALIF. — Phone PROSPECT 4-2255

Jack & Jill Motel

One Block From Disneyland

1042 Ball Road — Anaheim, Calif.
Phone KE 5-5524

Adjacent Disneyland Magic Kingdom
Magic Star Motel KE 5-9932
And
Domino's Restaurant
Lounge — Family Service
Nationally Known For Fine Foods
Credit Cards Honored
1735 Harbor Blvd. Anaheim, Calif.



SAGA MOTEL

PROspect 2-0440

Directly Across from
Disneyland's Main Entrance
100 Beautiful Units
Coffee Shop
1650 Harbor Blvd.

The Princess Motel



1769 West Street
At Katella
On Disneyland's Quiet West Side
Anaheim, California
PR 4-6427

KONAKAI



Hi-Fi • Room Phones
Kitchen Suites

JEfferson 4-5911
1820 S. West St.
Anaheim, Calif.



Directly Across from Disneyland
Walking Distance to Main Gate
• 100% Sound-Proof.
1520 Harbor Blvd.
PROspect 4-1324
Anaheim, Calif.

The CHP Reports to the Motoring Public

(Note: As a service to the many visitors who drive their own cars into California, VACATIONLAND Magazine publishes this report from the California Highway Patrol which points to those highway rules and regulations of most concern to the tourist.)

The California Highway Patrol has established a plan to provide a fast and convenient method for the motoring public to report highway emergencies. This toll-free call plan enables anyone to report a highway emergency to the nearest Patrol office at any time by asking the local telephone operator for "Zenith 1-2000." Any highway emergency within a city should be reported to the local Police Department.

The Patrol has found that the out-of-state driver has become involved more frequently in the following Vehicle Code Sections:

1. BASIC SPEED LAW

"No person shall drive a vehicle upon a highway at a speed greater than is reasonable or prudent having due regard for the traffic on, and the surface and width of, the highway and in no event at a speed which endangers the safety of persons or property."

2. FOLLOWING TOO CLOSELY

Keep a safe distance from the vehicle ahead at all times, taking into consideration the speed, type of roadway, and other conditions.

3. DOUBLE WHITE LINE

Where a highway is divided by a double white line, no vehicle shall cross over or drive to the left of the double line. Exceptions are for making a left turn across any such marking at an intersection or into or out of a private drive.

4. PEDESTRIAN RIGHT-OF-WAY

You must stop whenever it is necessary for the safety of anyone crossing the street on foot. Do not overtake and pass another car that has stopped at a crosswalk to permit someone to walk across.

5. LANE CHANGING AND ARM SIGNALS

Stay in one lane but if you have to change lanes, make sure you can do so safely, then give the proper signal before changing lanes or direction on the roadway.

6. SLOW MOVING VEHICLES

Any vehicle moving slower than normal flow of traffic at a given place and time shall be driven in the right lane of the roadway or as far to the right as is safe.

7. HEADLIGHT BEAMS

When you meet a car at night, you must lower your headlight beams when within 500 feet of an approaching driver or when following another car within 200 feet.

8. PASSING ON RIGHT

Do not pass on the right unless it can be done safely, and never by driving off the paved or main traveled portion of the roadway.

9. LOAD WITHIN VEHICLE

You must not drive a car so loaded, either with property or with persons, that you cannot see ahead of you or to the side, or that you cannot control the vehicle.

10. IMPAIRED VISION

You must permit no stickers on your windshield, sidewing, side or rear window, except in a 7-inch square in the lower corner of the windshield on the side away from the driver.

"I like cookies!"

"I like cake!"

"I like everything their Mommy bakes ... with Spreckels Sugar!"

SPRECKELS

SUGAR

granulated

Disneyland uses Spreckels Sugar exclusively... why not use it at your house, too!

WESTERNERS ARE SWEET ON SPRECKELS SUGAR

DISNEYLAND'S PHOTO QUIZ



1. This singing star, featured in the "Golden Horseshoe Revue" at Disneyland, is widely known for his past appearances on what radio show:
A. The Jack Benny Show; B. Hit Parade; C. Fibber McGee and Molly.



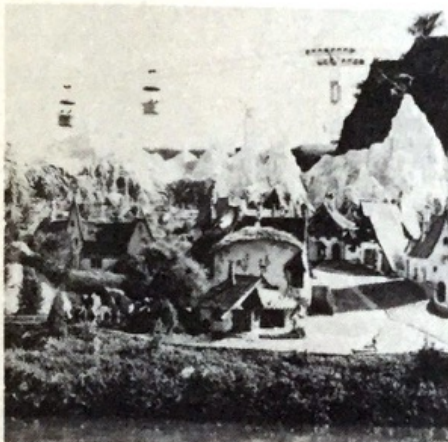
2. The Rivers of America at Disneyland offer four types of crafts for pleasure-filled rides. This one is a:
A. Mike Fink keelboat; B. Tugboat; C. Motorboat.



3. The exciting and inspiring sights in Tomorrowland at Disneyland project the visitor into the year:
A. 1970; B. 1987; C. 2000.



4. This fun-filled ride in Disneyland's Fantasyland features this familiar flying elephant:
A. Jumbo; B. Rajah; C. Dumbo.



5. In Storybook Land, one can see miniature dwellings of Disney characters. This is:
A. Pinocchio's Village; B. Houses of the Three Little Pigs; C. Home of Alice in Wonderland.



6. To further your enjoyment of fabulous Disneyland, a variety of delightful eating establishments are available. How many are there?
A. 5; B. 12; C. 18.



7. Many pleasing and practical gifts are offered to visitors at Disneyland. How many shops are available to visitors in this world-famed Magic Kingdom?
A. 10; B. 35; C. 50.



8. A wide range of entertaining and educational free shows and exhibits are available to visitors to Disneyland. How many are there?
A. 6; B. 9; C. 15.



9. Upjohn's 19th Century Apothecary, one of many interesting and educational exhibits, depicts the forerunner of what present-day store?
A. Variety Store; B. Drug Store; C. Supermarket.

Services at Disneyland

Unique as it is as a new concept in family entertainment, Disneyland can claim as well the "most complete" title, too—offering unusual services that make a visit to the Magic Kingdom still more convenient.

For the very young members of the visiting family, Disneyland provides—free of charge—the Pabulum Baby Station and its many comforts and conveniences: formula, bottle-warming, changing . . . those "little things" that make Disneyland the "happy place" for infants, too.

For those with pets, Ken-L-Land, adjacent to Disneyland's main gate, is the most modern dog and cat "motel" in the nation: clean, well-kept private quarters for each pet, a qualified attendant always on duty—all for only twenty-five cents.

And nearby, at famed Disneyland Hotel, there are "extra" services for the vacationing family, too. Outstanding among them is the babysitter service, with experienced, reliable ladies available to care for and entertain the youngsters while Mom and Dad go out on their own to shop or visit. Formulas, bottles and other items are available at the Hotel, also.

So none of Disneyland's visitors, no matter how young, need worry about leaving behind the comforts of home—they're right here, the moment they enter the Park or Hotel.



At Ken-L-Land in Disneyland, Wallace and Patricia Beron, children of Mr. and Mrs. Al J. Beron, San Diego, leave "Candy" in the care of Howard Johnson while the Berons visit the Park.

ANSWERS TO QUIZ

1. C; 2. A; 3. B; 4. C; 5. A; 6. C; 7. C; 8. C; 9. B.

Southern

Fried Chicken

Enjoy a tempting **tender-grown** SWIFT'S PREMIUM CHICKEN DINNER amid the delightful French provincial decor of the PLANTATION HOUSE. Complete fried chicken dinners \$1.70, children \$1. Real Southern Hospitality at . . .



PLANTATION HOUSE

Across the bridge on the river front in Frontierland
Swift's Fine Foods are served exclusively in Disneyland.



Susan sleepily dreams the *Sleeping Beauty* fable, while Marcy and Lynn listen to the age-old story read by Mrs. Veneta Wilson. These children of Mr. and Mrs. M. A. Riddle of Riddle, Idaho, are right at home with their baby-sitter, one of the many services of the Disneyland Hotel.

Vol. 3—No. 1

Spring, 1959

VACATIONLAND, published by DISNEYLAND

Honorary Editor-in-Chief.....	Walt Disney
Editor.....	Robert G. Robinson
Advertising Manager.....	Jack Lindquist
Art Director	Phil Bauer
Circulation Manager.....	William G. Schwenn
Advertising Representative.....	Richard Larson

Advertising information from Jack Lindquist, Disneyland.
All rights reserved. Reprint of material only upon written approval of Disneyland, Inc.

VACATIONLAND is published quarterly by Disneyland, Inc.
Disneyland photos by Carl Frith

...in the heart of America's favorite playland
Disneyland Park • Knott's Berry Farm • Marineland • Capistrano Mission

Disneyland Hotel

GOURMET RESTAURANT & COFFEE SHOP



OPEN 7 DAYS A WEEK

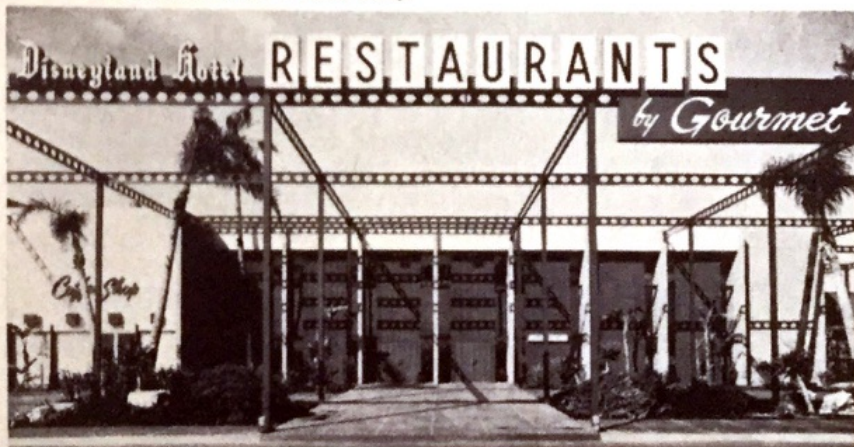
Direct Reservations
from
Carefree Corner
and
Hills Bros. Coffee House
at
Disneyland Park!

- Entertainment nightly in Round-the-World Cocktail Lounge
- Complimentary parking at your door; TV in every room
- Richfield Automotive Service
- Golf privileges available

ALL THIS AND REASONABLE
RATES TOO!



CORAL SWIM CLUB Magnificent Olympic-size heated pool in a tropical setting of unsurpassed beauty. Championship putting green, shuffleboard and, for the youngsters, wading pool, playground and giant sand box. Modern air-conditioned accommodations, each room with private patio or sun deck. Airport limousine service, Avis-Tanner Tours & U-Drive, Airline ticket office in hotel lobby.



FOOD FOR THE GOURMET In restaurant or coffee shop, you'll enjoy famous food by Gourmet. Special children's menu. Breakfast & luncheon from \$1.25 and dinner from \$2.35. Adjoining restaurant and hotel are smart shops that serve your every need. Also handy tram that takes you across the street to fabulous Disneyland Park.

for reservations call KEystone 5-8171 or MAdison 5-1369

Enter thru
main entrance Disneyland Park

DISNEYLAND HOTEL • ANAHEIM, CALIFORNIA

