

WALT DISNEY PRODUCTIONS
INTER-OFFICE COMMUNICATION

P-136

TO JOE FOWLER

DATE February 7, 1969

FROM FRANK STANEK

SUBJECT Attached Monorail Schedule

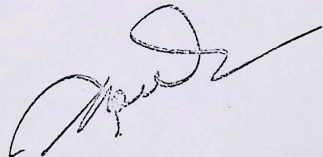
Attached find a preliminary schedule for the Walt Disney World Monorail system. In order to have this system operational by October 1971 the following items are of critical nature:

1. Beamway Design - This design should be begun immediately, in order that, construction of the Beamway may be complete by July 1971 to permit testing of the trains. This is particularly true if we expect to bid the entire system with one bid package. Construction of the foundations for the Beamway should begin January 1970.
2. Rolling Stock Long Lead Items - These items require nine months procurement period which should be initiated immediately, in order that, sub-assemblies of trains may begin by the end of this year.
3. Monorail Shed - Design of this item should begin immediately, as this will require an eighteen month design and construction period. Final assembly of the Monorail trains in Florida can not begin until this facility is completed.
4. Casting Yard - It may be necessary to set up the casting yard for beams and piers earlier than indicated in the attached schedule, in order that, beamway will be available for the Monorail shed. Further analysis of this item is underway.

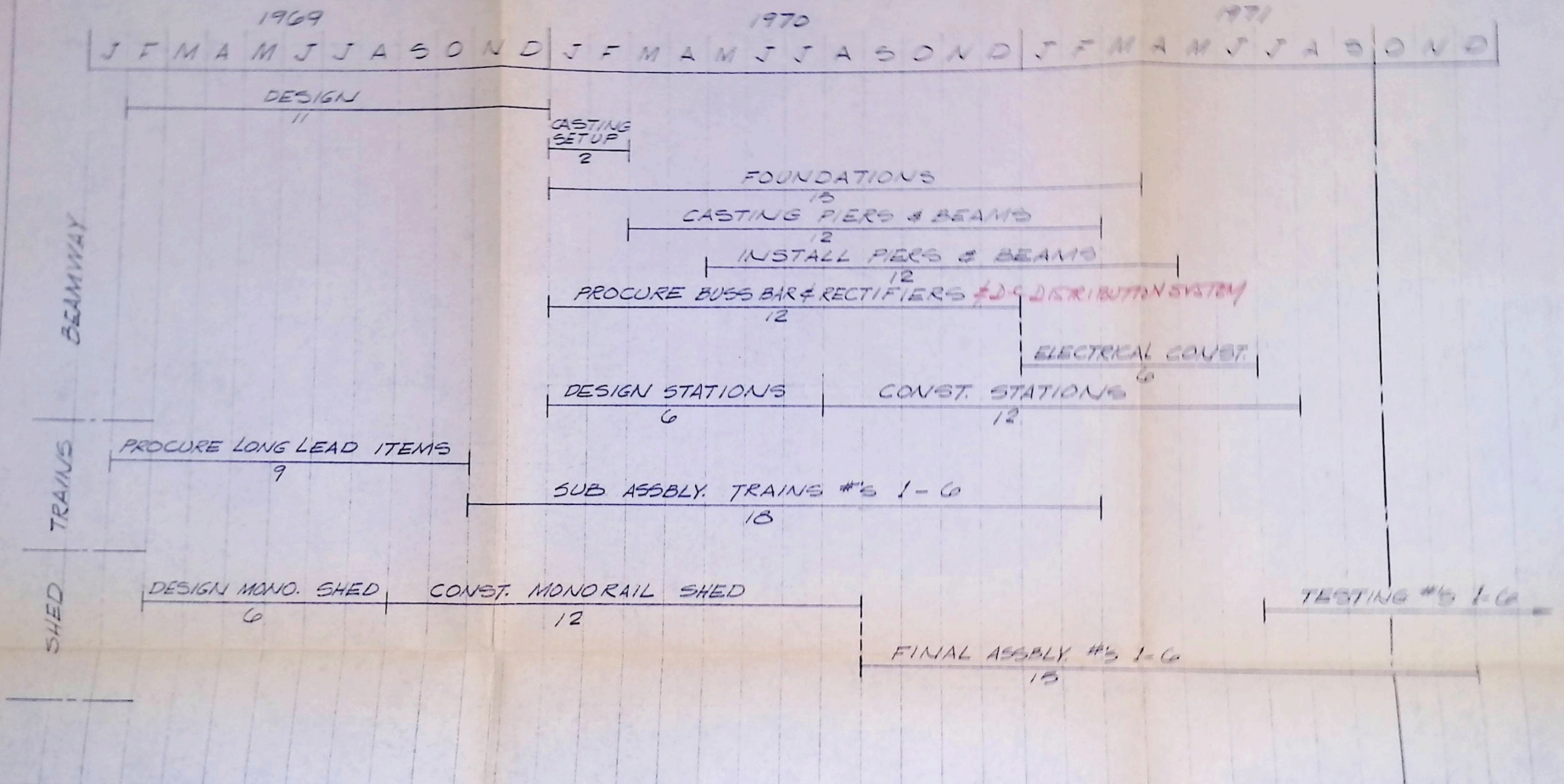
The attached schedule indicates that we would have a minimum of four Monorail trains operational by October 1971, with the final two trains operational by December 1971. It is, however, contingent upon immediate start up of the above items. Further analysis of detailed production and construction items may permit us to gain additional time on the schedule.

FS/cjm

cc: Dick Irvine
Roger Broggie
John Wise
Dave Gengenbach



W.D.W. MONORAIL SYSTEM — PRELIMINARY SCHEDULE



PREPARED 2-7-69

BY WED PROJECT PLANNING