



Walt Disney World.

EPCOT CENTER



Walt Disney World.

EPCOT CENTER

A PICTORIAL SOUVENIR

Every day we are working hard to make our
world a better place. We are always looking for
new ways to improve our products and services.
We are always looking for new ways to make
our world a better place. We are always looking
for new ways to improve our products and
services. We are always looking for new ways
to make our world a better place. We are
always looking for new ways to improve our
products and services. We are always looking
for new ways to make our world a better place.
We are always looking for new ways to improve
our products and services. We are always looking
for new ways to make our world a better place.”

WALT DISNEY

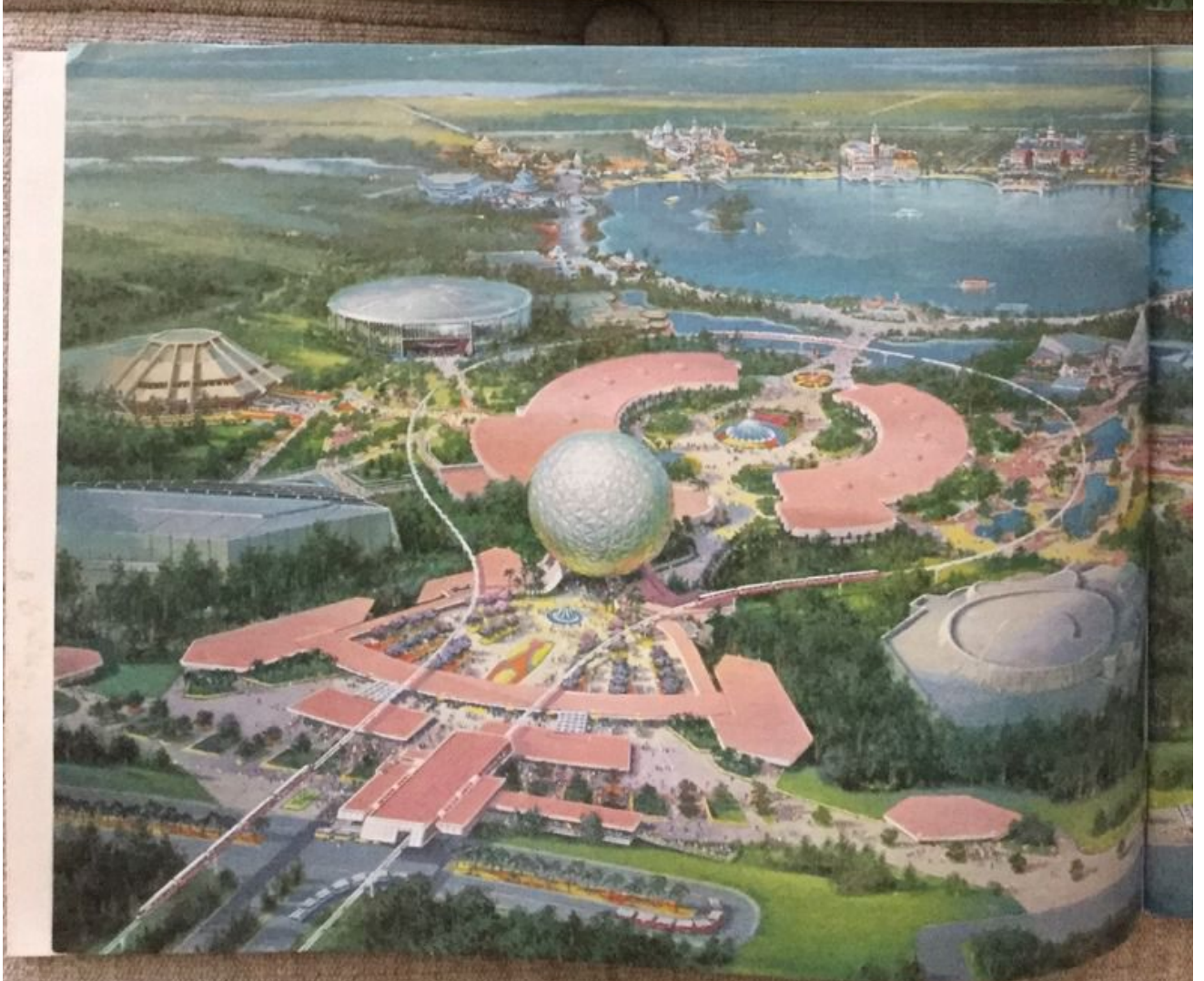
“If we can bring together the technical know-how of American industry and the creative imagination of the Disney organization—I’m confident we can create right here in Disney World a showcase to the world of the American free enterprise system.”

WALT DISNEY

The 21st
century
begins
October 1,
1982







SPACESHIP EARTH



UNIVERSE OF ENERGY



WORLD OF MOTION



JOURNEY INTO IMAGINATION



THE LAND



SPACESHIP EARTH



UNIVERSE OF ENERGY



WORLD OF MOTION



JOURNEY INTO IMAGINATION



THE LAND



SPACESHIP EARTH

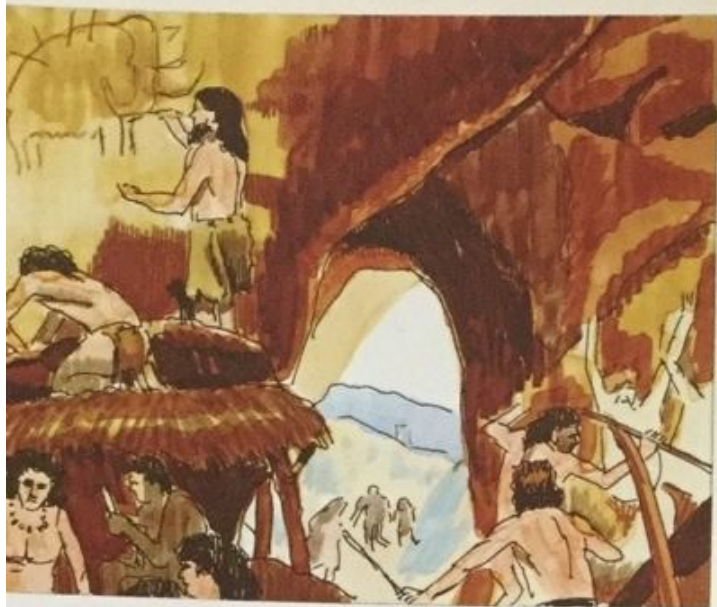
presented by **Bell System**

SPACESHIP EARTH

presented by **Bell System**



SPACESHIP EARTH



COMMUNICATIONS IN MANKIND'S SURVIVAL

UPON ENTERING SPACESHIP EARTH, GUESTS BECOME TIME TRAVELERS TAKEN BACK TO THE AGE OF CRO-MAGNON MAN. THE CAVERMAN'S ATTEMPTS TO RECORD HIS EXPERIENCES ARE SEEN AS THE EARLIEST CONTRIBUTION TO THE DEVELOPMENT OF WRITTEN COMMUNICATION. WE'LL SURVEY OTHER COMMUNICATION MILESTONES SUCH AS THE EGYPTIANS' DEVELOPMENT OF HIEROGLYPHICS AND THE PHOENICIAN ALPHABET WHICH ESTABLISHED THE FOUNDATION FOR MODERN ALPHABETS.

DRAMATIC COMMUNICATION IS BORN IN THE GREEK THEATRE, BECOMING A POETIC EXPRESSION OF IDEAS AND PHILOSOPHY. ANOTHER STOPPING POINT IN THE JOURNEY, GUTENBERG'S 15TH-CENTURY PRINT SHOP IS THE SETTING FOR A COMMUNICATIONS REVOLUTION.

MORE CENTURIES PASS AND WE'RE PROPELLED INTO THE AGE OF INVENTION. A STREAM OF INVENTIONS—THE TELEGRAPH, TELEPHONE, RADIO, MOTION PICTURES, TELEVISION—BRING THE DREAM OF INSTANT COMMUNICATION TO REALITY.

ACCELERATING INTO SPACE-AGE TECHNOLOGY, WE FIND OURSELVES WITHIN A MAZE OF COMPUTER IMPULSES AND ARE AWAR...

SPACESHIP EARTH



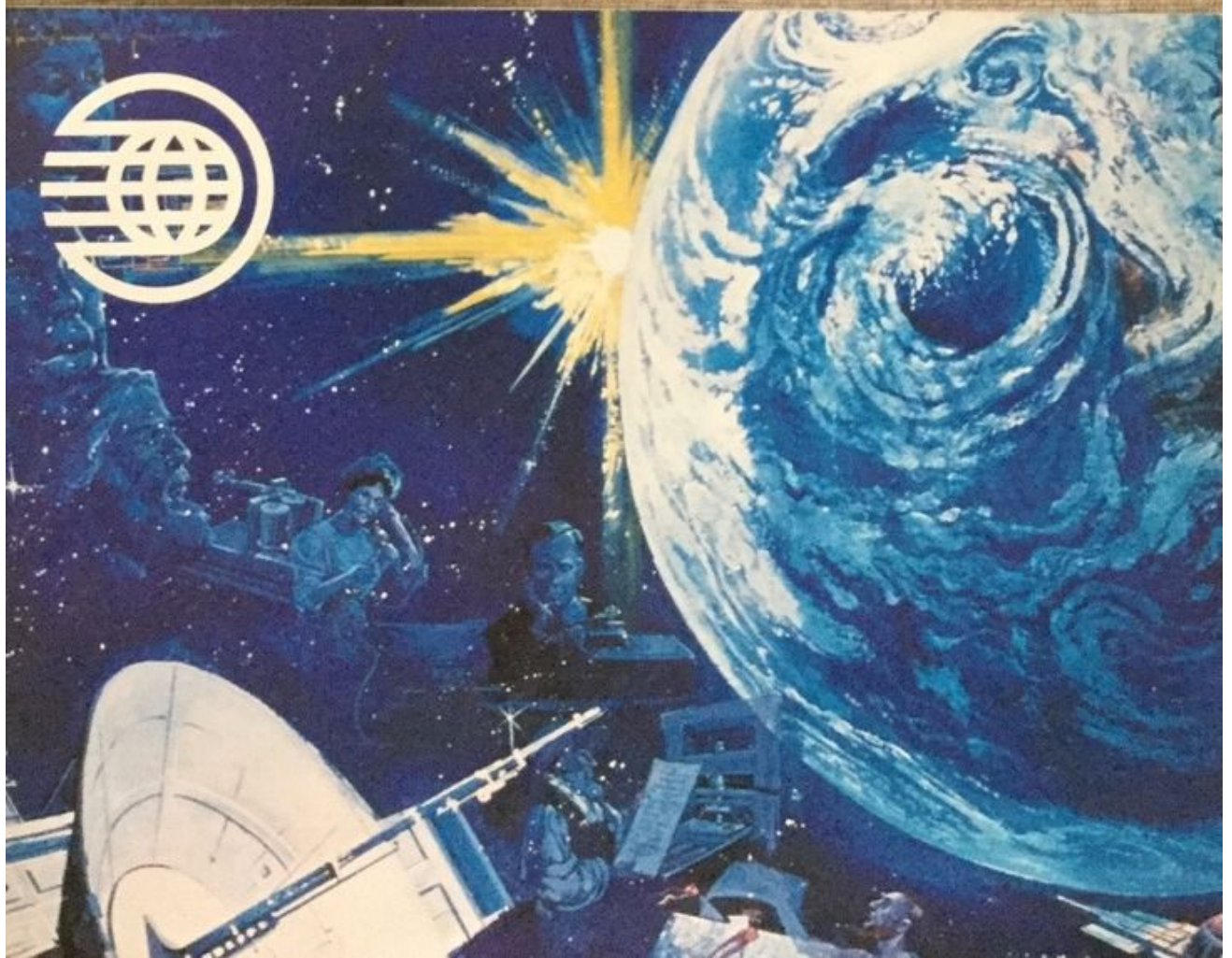
The architecturally unique Spaceship Earth globe forms a breathtaking entrance to Epcot Center. Entering Future World, visitors pass directly beneath this glistening geosphere which reaches a height surpassing that of the Walt Disney World Contemporary Resort Hotel. Within this theme structure, a swirling time journey retraces the increasingly important role of communications in mankind's survival.

Upon entering Spaceship Earth, guests become time travelers taken back to the age of Cro-Magnon man. The caveman's attempts to record his experiences are seen as the earliest contribution to the development of written communication. We'll survey other communication milestones such as the Egyptians' development of hieroglyphics and the Phoenician alphabet which established the foundation for modern alphabets.

Dramatic communication is born in the Greek theatre, becoming a poetic expression of ideas and philosophy. Another stopping point in the journey, Gutenberg's 15th-century print shop is the setting for a communications revolution.

More centuries pass and we're propelled into the Age of Invention. A stream of inventions—the telegraph, telephone, radio, motion pictures, television—bring the dream of instant communication to reality.

Accelerating into space-age technology, we find ourselves within a maze of computer impulses and are awak...







SPACESHIP EARTH



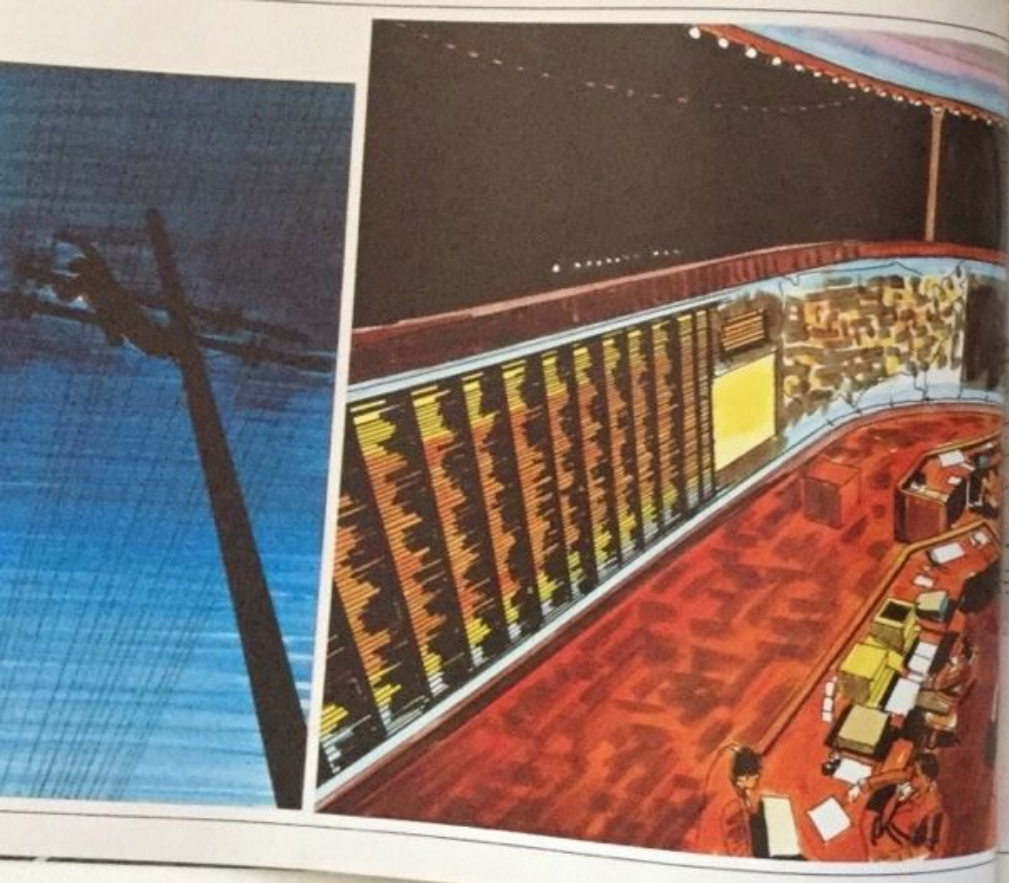
THESE WORDS ARE THE SAME AS THE WORDS YOU SEE IN THE OTHER PAGE. THEY ARE THE SAME AS THE WORDS YOU SEE IN THE OTHER PAGE. THEY ARE THE SAME AS THE WORDS YOU SEE IN THE OTHER PAGE.



SPACESHIP EARTH



Ironically transmitted into space aboard a burst of telemetry. Momentarily suspended in the heavens, we gaze down upon our small planet, our Spaceship earth, adrift in the midnight sky. Having re-lived our past and eyed our future, we time passengers are now ready to become captains, to chart our earth's course toward tomorrow and determine our own destinies.



THESE ARE THE FIRST OF THE NEW
AND THE NEW ARE THE FIRST OF THE
THESE ARE THE FIRST OF THE NEW
AND THE NEW ARE THE FIRST OF THE
THESE ARE THE FIRST OF THE NEW
AND THE NEW ARE THE FIRST OF THE
THESE ARE THE FIRST OF THE NEW
AND THE NEW ARE THE FIRST OF THE
THESE ARE THE FIRST OF THE NEW
AND THE NEW ARE THE FIRST OF THE
THESE ARE THE FIRST OF THE NEW
AND THE NEW ARE THE FIRST OF THE

THESE ARE THE FIRST OF THE NEW
AND THE NEW ARE THE FIRST OF THE
THESE ARE THE FIRST OF THE NEW
AND THE NEW ARE THE FIRST OF THE
THESE ARE THE FIRST OF THE NEW
AND THE NEW ARE THE FIRST OF THE
THESE ARE THE FIRST OF THE NEW
AND THE NEW ARE THE FIRST OF THE
THESE ARE THE FIRST OF THE NEW
AND THE NEW ARE THE FIRST OF THE
THESE ARE THE FIRST OF THE NEW
AND THE NEW ARE THE FIRST OF THE



UNIVERSE OF ENERGY

presented by **EXXON**

UNIVERSE OF ENERGY

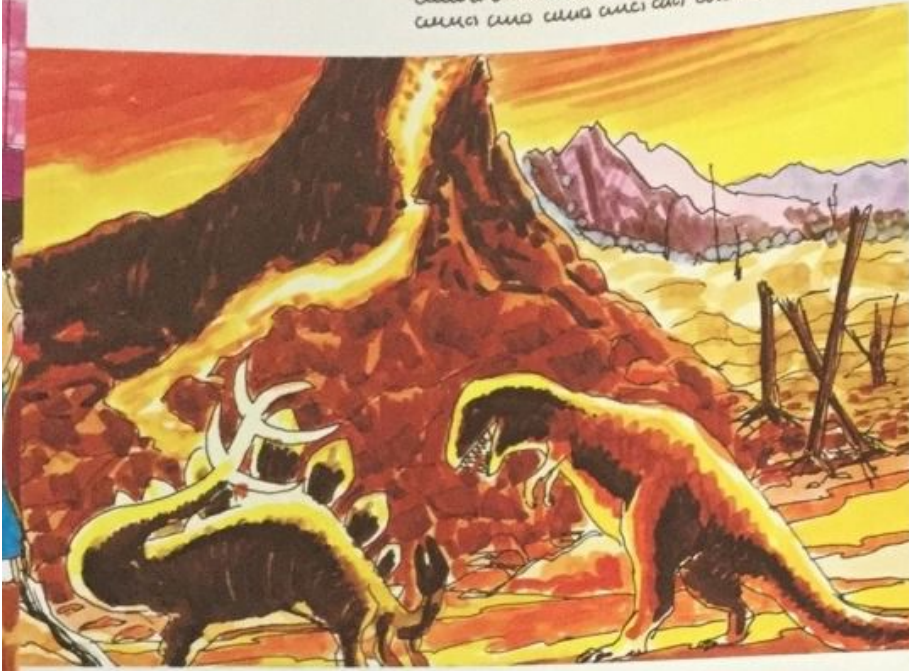
presented by **EXXON**





UNIVERSE OF ENERGY

THE UNIVERSE OF ENERGY IS A WONDROUS AND STUNNING
EXPERIENCE THAT WILL TAKE YOU TO THE HEART OF THE
MATTERS THAT AFFECT OUR FUTURE. FROM THE SEARCH FOR
NEW ENERGY SOURCES TO THE CHALLENGES OF DELIVERING
THESE RESOURCES TO OUR HOMELANDS, WE WILL DISCOVER
THE STORIES OF THE MEN AND WOMEN WHO ARE MAKING
A DIFFERENCE IN OUR WORLD. JOIN US AS WE EXPLORE
THE UNIVERSE OF ENERGY AND THE PART IT PLAYS IN OUR
LIVES.

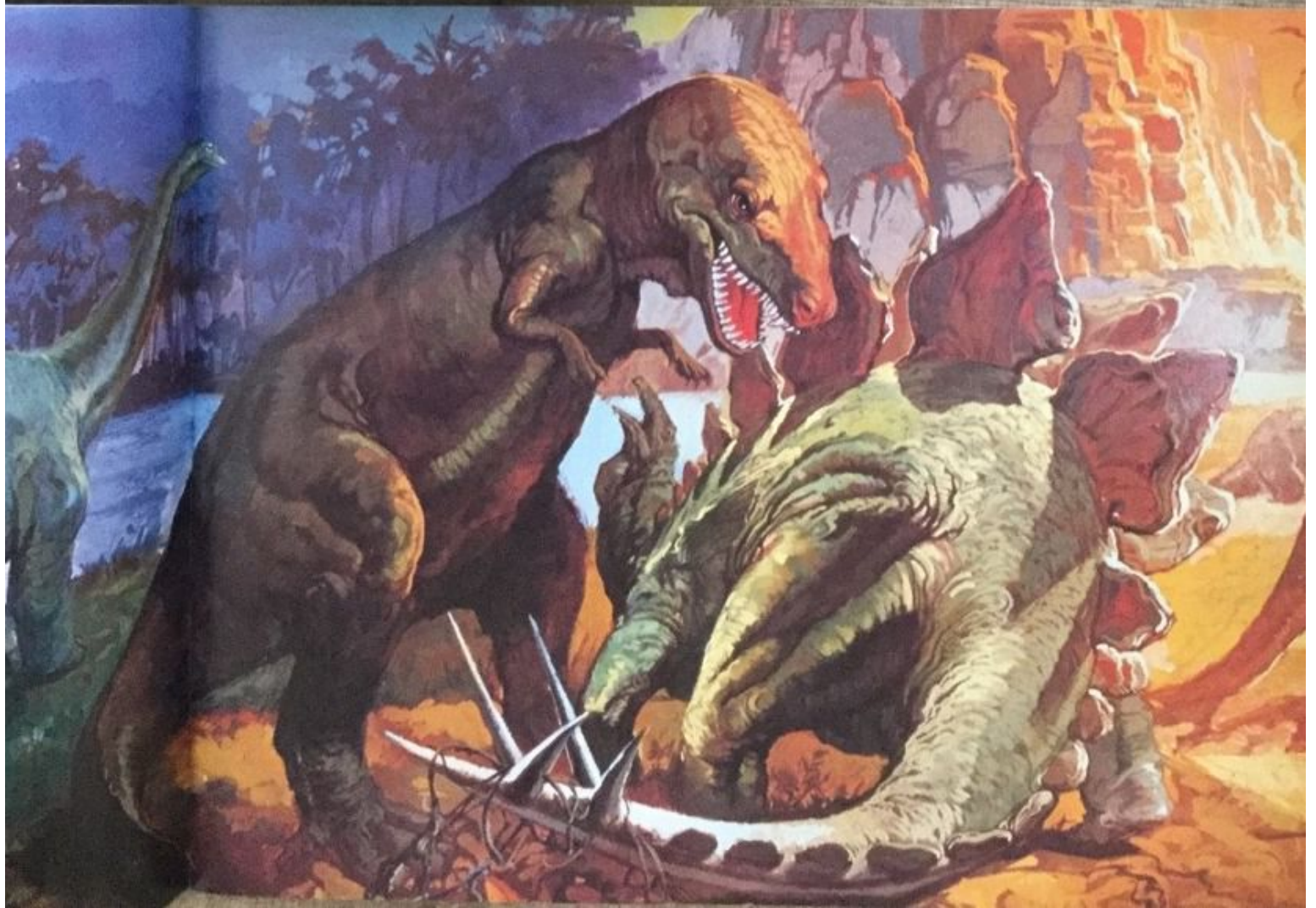


UNIVERSE OF ENERGY

skirting the molten lava spewed from an erupting volcano. Then, on a screen stretching 220° around us, we are "there" for an exciting live-action film dealing with today's energy challenges and the technologies that may power our tomorrows. We'll discover the staggering tasks involved in the search and recovery of fossil fuels, the enormous effort to build the Alaskan pipeline, and the almost overwhelming task of delivering the world's oil via super tanker. In addition to learning about energy conservation and alternatives, guests actually experience a "ride on sunshine" through the Universe of Energy, as their vehicles are partially powered by solar energy gathered by photovoltaic cells atop the building's roof.

In a climactic finale, a medley of colors and images dance across a wondrous looking-glass theater of stupendous dimension. From the center of a completely mirrored theater, the audience is wrapped in the motion of constantly metamorphosing computer graphic images—the largest computer images ever created. The forces of energy and the part they play in our lives is powerfully depicted in the show's final act.





WORLD OF MOTION

presented by General Motors

WORLD OF MOTION

presented by General Motors



WORLD OF MOTION



OURS IS A WORLD OF MOTION. Flying, driving, sailing, riding—we move about in a transportation network that reaches every corner of the globe, providing today's population with ever-accelerating mobility.

Epcot Center's World of Motion presents an amusing look at man's age-old quest for freedom of movement, tracing a journey that began when someone first decided he wanted to be someplace other than where he was. Disney Imagineers have assembled Future World's largest cast of Audio-Animatronics figures for this tongue-in-cheek "roadshow," an attraction equal in size to all of Main Street, U.S.A., in the Magic Kingdom. In more than a dozen scenes creatively blending authenticity with humor, the computerized cast dramatizes memorable moments in transportation beginning with our first foot-powered treks outside the cave and the "blistering" effects that soon followed. From the outset we'll see that man discovered travel was not without its perils. Venturing onward, man engages beasts of burden to help take the load off his feet. But his new vehicles have minds of their own and stubborn constitutions to match, hindering man's travels and starting his dreaming of a magic carpet though flight is centuries to come.



WORLD OF MOTION

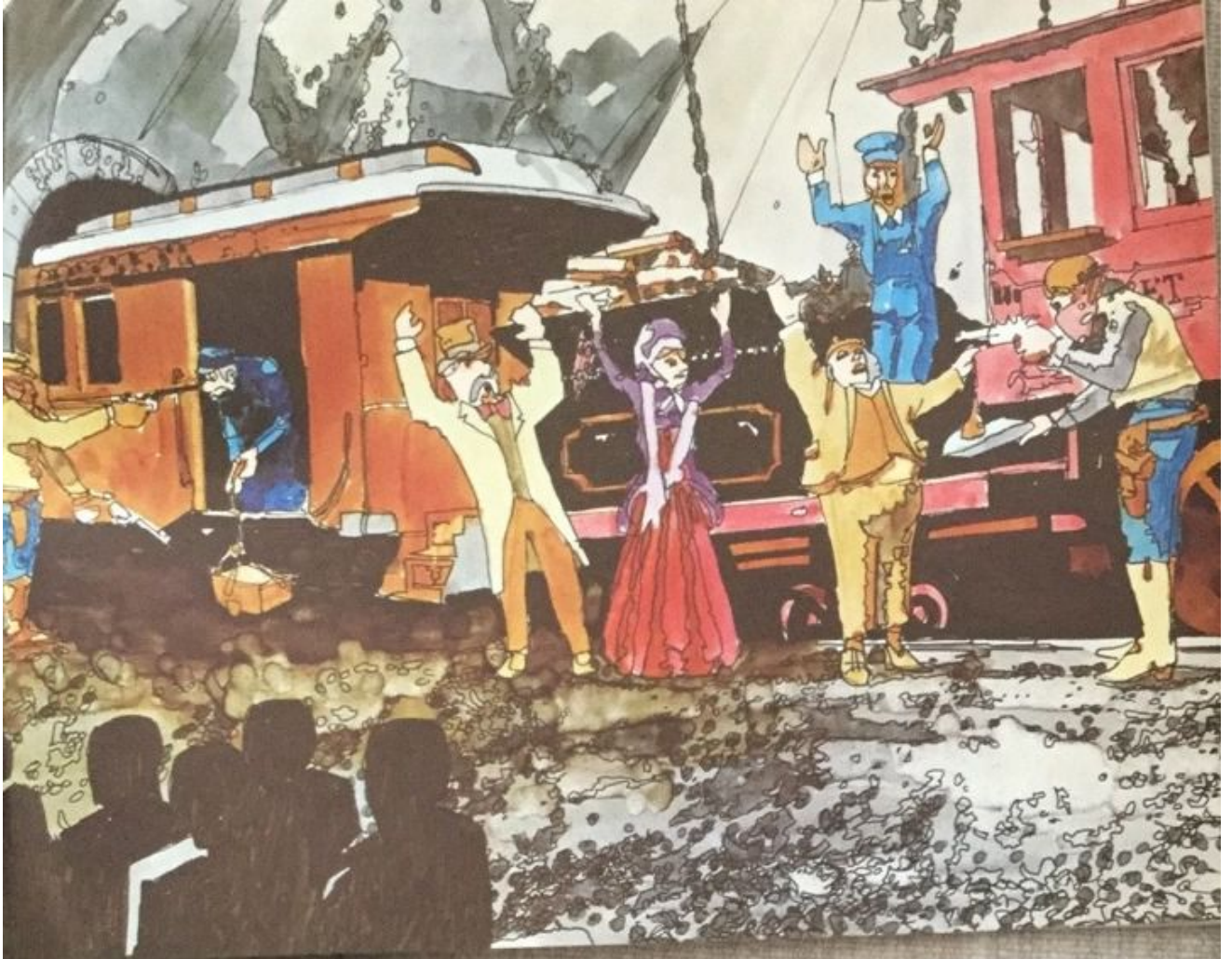


Ours is a World of Motion. Flying, driving, sailing, riding—we move about in a transportation network that reaches every corner of the globe, providing today's population with ever-accelerating mobility.

Epcot Center's World of Motion presents an amusing look at man's age-old quest for freedom of movement, tracing a journey that began when someone first decided he wanted to be someplace other than where he was. Disney Imagineers have assembled Future World's largest cast of Audio-Animatronics figures for this tongue-in-cheek "roadshow," an attraction equal in size to all of Main Street, U.S.A., in the Magic Kingdom. In more than a dozen scenes creatively blending authenticity with humor, the computerized cast dramatizes memorable moments in transportation beginning with our first foot-powered treks outside the cave and the "blistering" effects that soon followed. From the outset we'll see that man discovered travel was not without its perils. Venturing onward, man engages beasts of burden to help take the load off his feet. But his new vehicles have minds of their own and stubborn constitutions to match, hindering man's travels and starting his dreaming of a magic carpet though flight is centuries to come.







JOURNEY INTO IMAGINATION

presented by **Kodak**

JOURNEY INTO IMAGINATION

presented by **Kodak**



THE DREAMFINDER AND FIGMENT ARE THE TWO
 MAIN CHARACTERS OF THE JOURNEY INTO IMAGINATION. A
 SMALL DRAGON OF A CREATURE KNOWN AS FIGMENT,
 GUIDES US ON OUR JOURNEY INTO IMAGINATION. TOGETHER,
 THESE TWO FRIENDLY FELLOWS WILL TAKE US BEYOND
 THE LIMITATIONS OF TIME AND SPACE, OPENING VISTAS
 NEAR TO THE HEART'S DESIRE AND NO FURTHER AWAY
 THAN THE LINGERING SMILE OF A ONCE REMEMBERED
 DREAM. FLYING ALONG IN HIS WHIMSICAL CONTRAPTION
 THAT GATHERS THE ELEMENTS AND MATERIALS FROM
 THE UNIVERSE, THE DREAMFINDER INTRODUCES US TO
 THE MARVELOUS HIDDEN WORLD OF THE IMAGINATION.



JOURNEY INTO IMAGINATION

THE DREAMFINDER AND FIGMENT ARE THE TWO
 MAIN CHARACTERS OF THE JOURNEY INTO IMAGINATION. A
 SMALL DRAGON OF A CREATURE KNOWN AS FIGMENT,
 GUIDES US ON OUR JOURNEY INTO IMAGINATION. TOGETHER,
 THESE TWO FRIENDLY FELLOWS WILL TAKE US BEYOND
 THE LIMITATIONS OF TIME AND SPACE, OPENING VISTAS
 NEAR TO THE HEART'S DESIRE AND NO FURTHER AWAY
 THAN THE LINGERING SMILE OF A ONCE REMEMBERED
 DREAM. FLYING ALONG IN HIS WHIMSICAL CONTRAPTION
 THAT GATHERS THE ELEMENTS AND MATERIALS FROM
 THE UNIVERSE, THE DREAMFINDER INTRODUCES US TO
 THE MARVELOUS HIDDEN WORLD OF THE IMAGINATION.



Our host, the Dreamfinder, an entrepreneur older than wisdom and younger than the morning mist, and his impish helper, a small dragon of a creature known as Figment, guide us on our Journey into Imagination. Together, these two friendly fellows will take us beyond the limitations of time and space, opening vistas near to the heart's desire and no further away than the lingering smile of a once remembered dream. Flying along in his whimsical contraption that gathers the elements and materials from the universe, the Dreamfinder introduces us to the marvelous hidden world of the imagination. He demonstrates this wonderful gift by synthesizing a new creation—his sidekick, Figment. Using the body of a lizard shaded with purple pigment, the nose of a crocodile with eyes big and yellow, the horns of a dilemma with two tiny wings, and adding a touch of the childish delight of a birthday party, the Dreamfinder, bit by bit, designs a Figment of his imagination who materializes as a pint-sized dragon of curious mischief and child-like naivete.

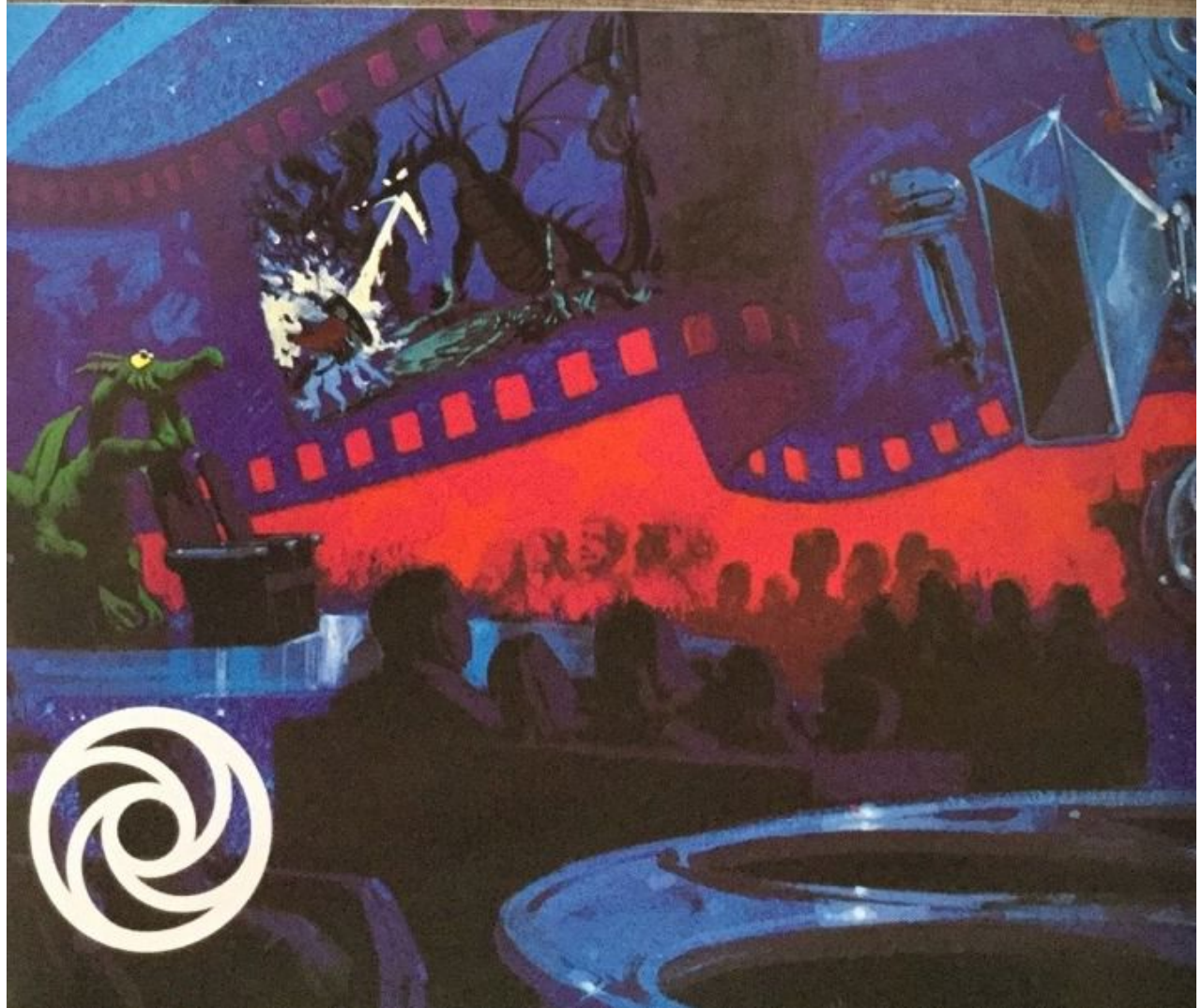
Warned that no one knows where imagining can lead, we're charmed by the elfish dragon and follow him beyond the Dreamport into the worlds of art, literature, theater and science. What we find is a fun-filled sensory experience in a unique workshop of creative ideas.

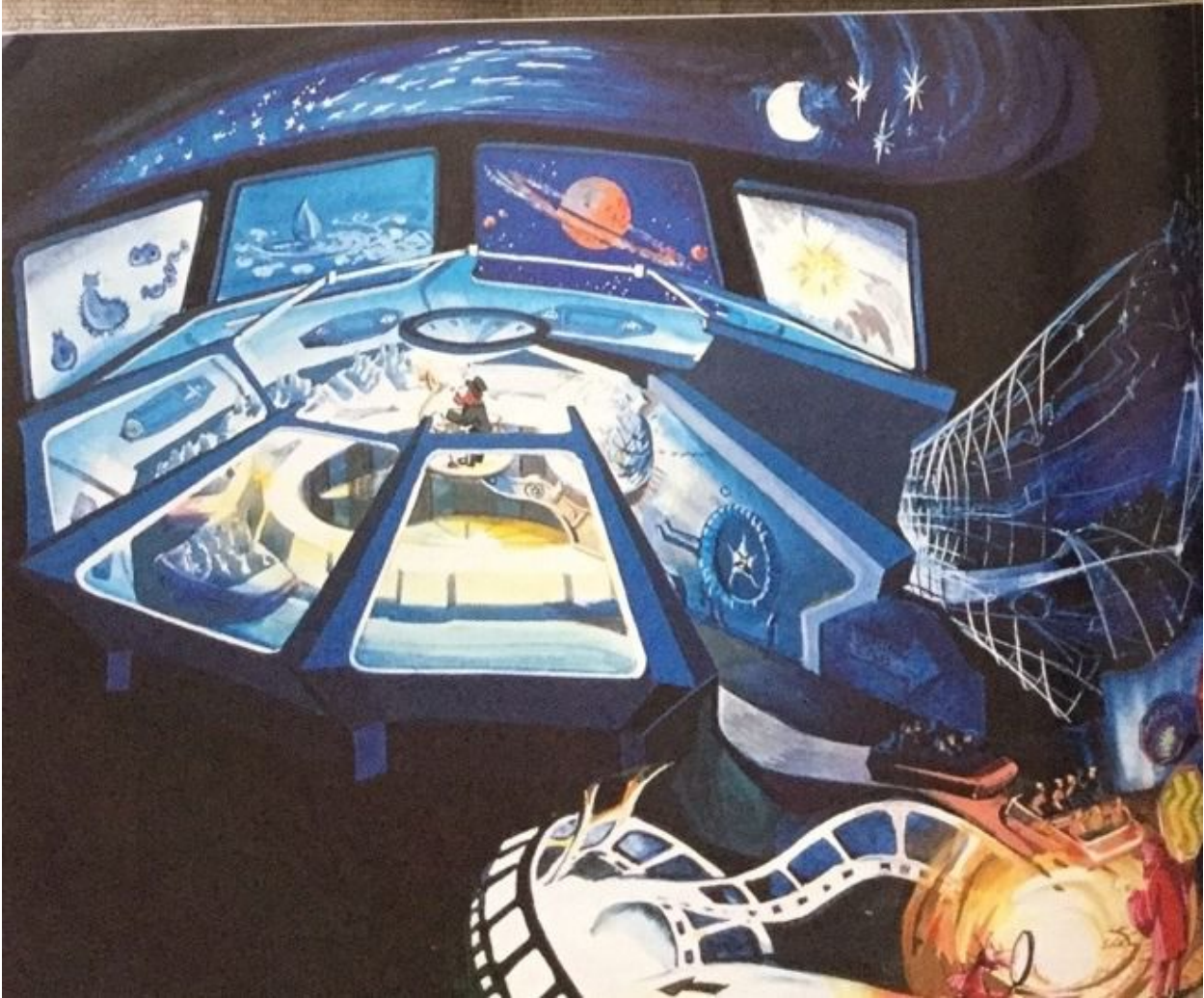
As if we were entering an artist's palette, we see the world of art as an orchestration of abstract imagery in ever-changing patterns of color, line and form. Our friend, Figment, sifts through the dreams of a child's world of wonderment where fairy tale creations are sculpted into visions of great beauty and daring boldness.

In the world of literature, Dreamfinder's volcanic typewriter spews letters which transform into words which transform into images. Then, with the stroke of his baton, Dreamfinder brings the world of performing arts to life in a full symphony of sound and laser imagery. And no sooner does the curtain ring down on the theater than Dreamfinder has it rise again on the realm of science and technology. Aboard a starship filled with a con-



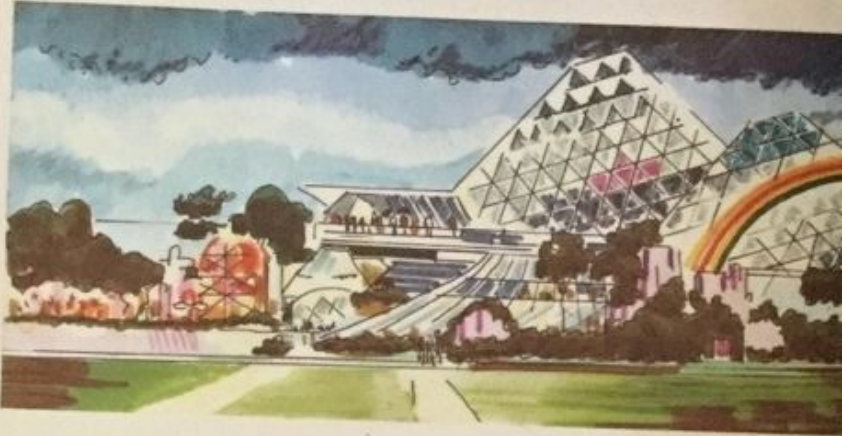
JOURNEY INTO IMAGINATION



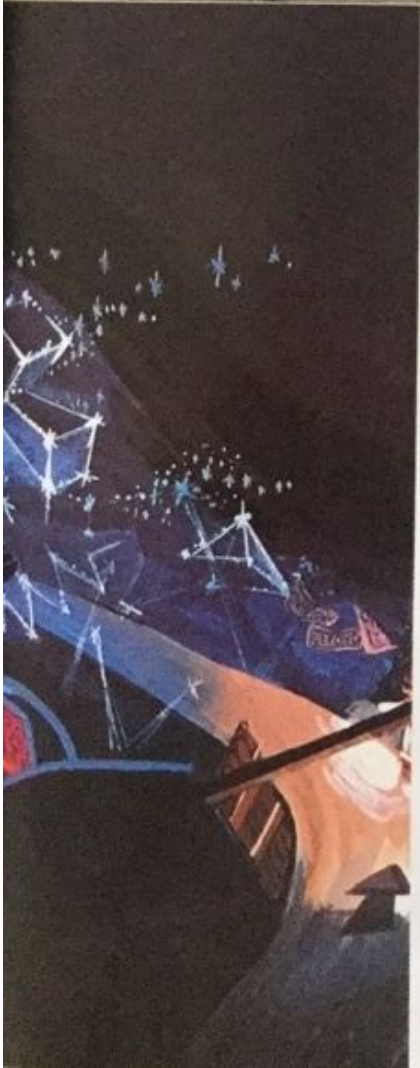




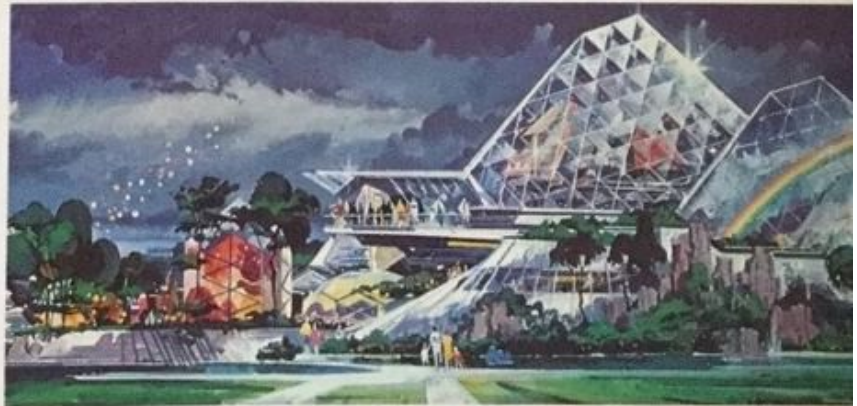
JOURNEY INTO IMAGINATION



AMERICAN EXPRESS CARD COMPANY
AMERICAN EXPRESS CARD COMPANY
AMERICAN EXPRESS CARD COMPANY
AMERICAN EXPRESS CARD COMPANY
AMERICAN EXPRESS CARD COMPANY
AMERICAN EXPRESS CARD COMPANY
AMERICAN EXPRESS CARD COMPANY
AMERICAN EXPRESS CARD COMPANY
AMERICAN EXPRESS CARD COMPANY
AMERICAN EXPRESS CARD COMPANY



JOURNEY INTO IMAGINATION



glomeration of gadgets, gizmos, and doo-dahs, the Dreamfinder once again challenges the imagination by bursting open the gateway to the dreams of worlds untraveled and to the travels of worlds undreamed.

The Dreamfinder extends an invitation to visit Image Works, a unique arcade of the future where our imaginations are allowed to run the gamut of creativity. In Image Works you can place yourself in a variety of exotic backgrounds through the magic of Chromakey, create your own video art using an electronic palette, and have fun making and mixing patterns of colors into fluid fantasies.

Concluding our Journey into Imagination, the Magic Eye Theater promises to delight the senses with 3-D film imagery.

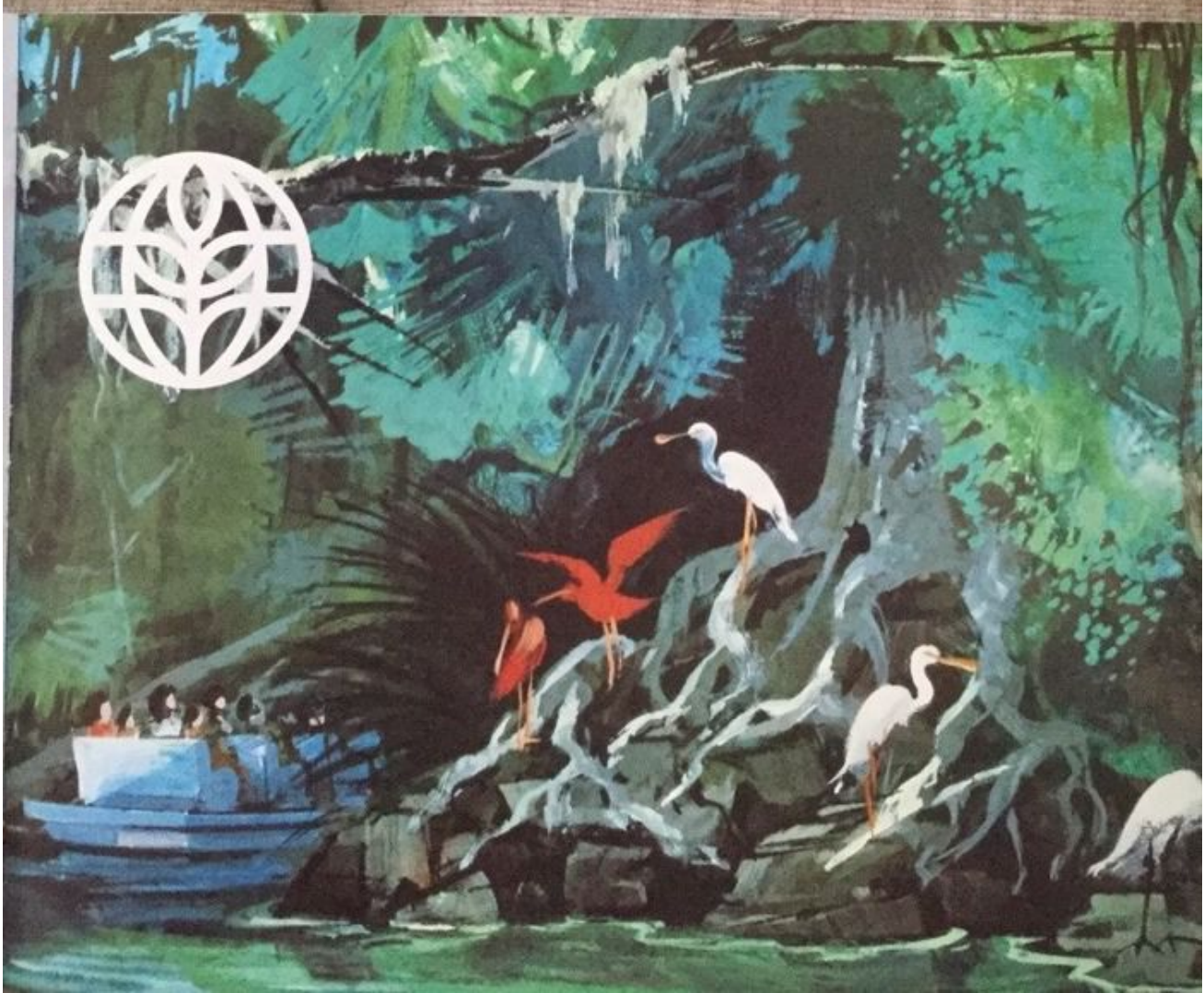
THE LAND

presented by Kraft

THE LAND

presented by Kraft







HORIZONS

presented by **GENERAL ELECTRIC**

OPENING 1983

HORIZONS

presented by **GENERAL ELECTRIC**

OPENING 1983



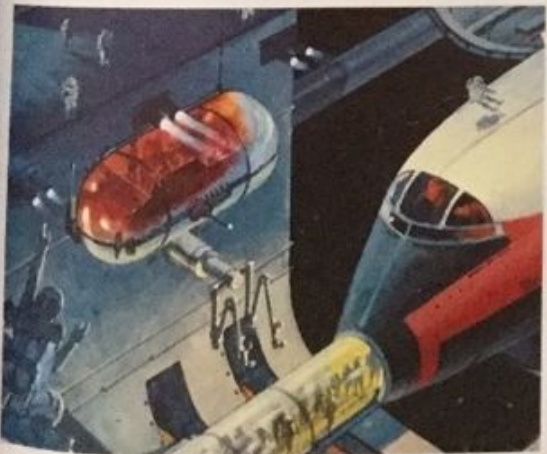
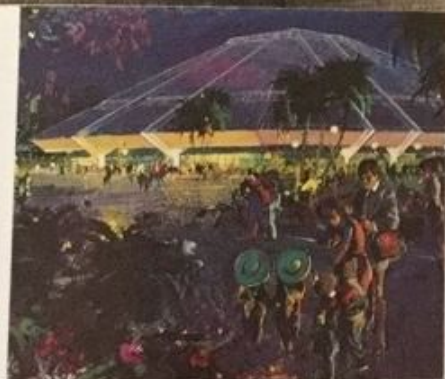




HORIZONS

OPENING 1983

In Future World Phase II, visitors will see a bright view of what's on our Horizons in a show depicting family life-styles in the 21st century. Before entering into the future, guests see today's world as it's never been seen before. The incredible Omnisphere presents microworlds of crystal formation and chains of DNA as well as a fiery space shuttle blast-off and extra-terrestrial locales on a colossal projection surface towering more than eight stories. On tomorrow's horizons we'll find a 21st century habitat floating beneath the sea. Here, school children equip themselves with recirculation gills to prepare for a "field trip" to an undersea kelp farm. In a desert community voice-controlled robots are seen harvesting genetically engineered crops. Guests will also visit space colonists who live within the interior of a rotating sphere, simulating the pull of gravity. To bring members of the family "together" from ocean, urban, desert and space habitats, colonists use their holographic televiewer, one of tomorrow's many innovations for a better life-style. Before leaving the 21st century, we'll be able to choose our own tomorrow by simply pressing one of the buttons aboard the ride vehicle. Our probe into the future will culminate in a simulated ride through one of the environments we've just viewed.

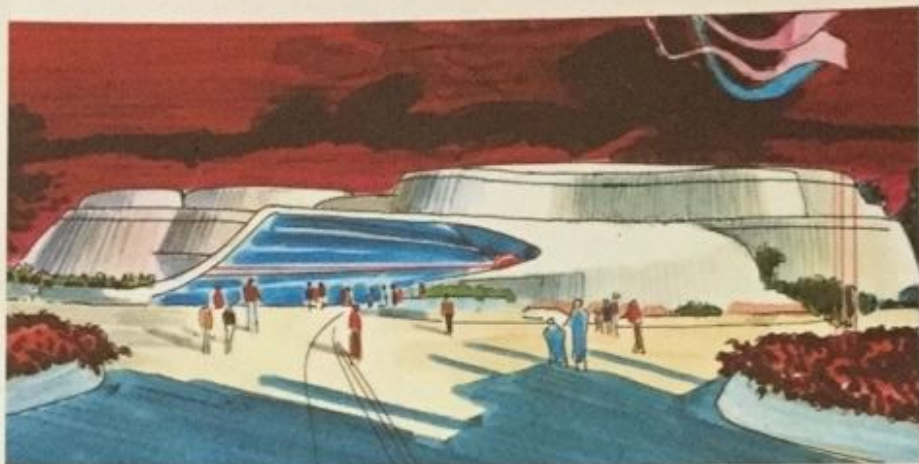


HORIZONS

OPENING 1983

In Future World Phase II, visitors will see a bright view of what's on our Horizons in a show depicting family life-styles in the 21st century. Before entering into the future, guests see today's world as it's never been seen before. The incredible Omnisphere presents microworlds of crystal formation and chains of DNA as well as a fiery space shuttle blast-off and extra-terrestrial locales on a colossal projection surface towering more than eight stories. On tomorrow's horizons we'll find a 21st century habitat floating beneath the sea. Here, school children equip themselves with recirculation gills to prepare for a "field trip" to an undersea kelp farm. In a desert community voice-controlled robots are seen harvesting genetically engineered crops. Guests will also visit space colonists who live within the interior of a rotating sphere, simulating the pull of gravity. To bring members of the family "together" from ocean, urban, desert and space habitats, colonists use their holographic televiewer, one of tomorrow's many innovations for a better life-style. Before leaving the 21st century, we'll be able to choose our own tomorrow by simply pressing one of the buttons aboard the ride vehicle. Our probe into the future will culminate in a simulated ride through one of the environments we've just viewed.

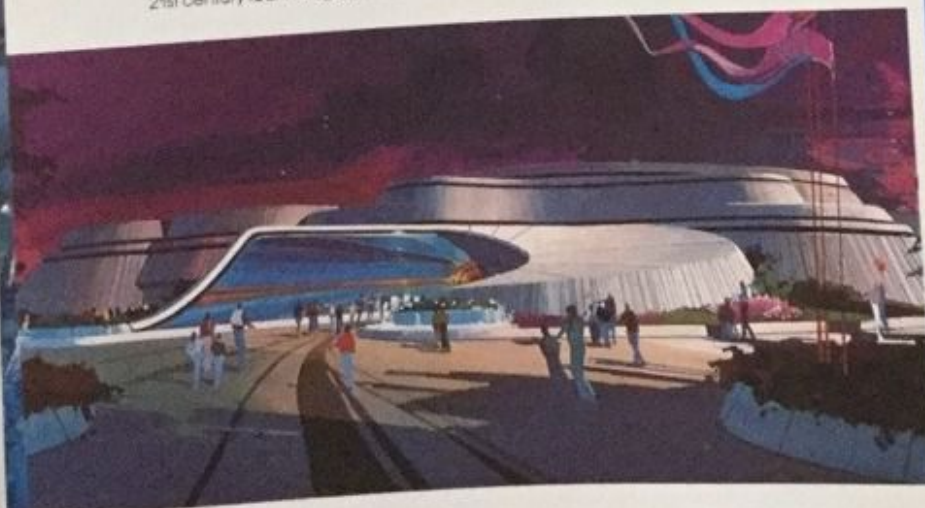
OPENING 1984 *Using Disney magic, the mythical Lord of the Seas will invite guests to embark on an incredible sub-sea journey. Traveling in pearly-like vehicles, visitors will glide through surrealistic scenes from the mysterious and wondrous environments that make up our planet's oceans. As the vehicles near their final destination, Poseidon challenges us to face the oceans wisely, with courage and determination. We then disembark into a startlingly realistic 21st century seabase set within a six-million gallon coral reef teeming with life. You'll be free to examine a myriad of interesting and exciting demonstrations that reflect 21st century technologies in the world of the Living Seas.*



THE LIVING SEAS

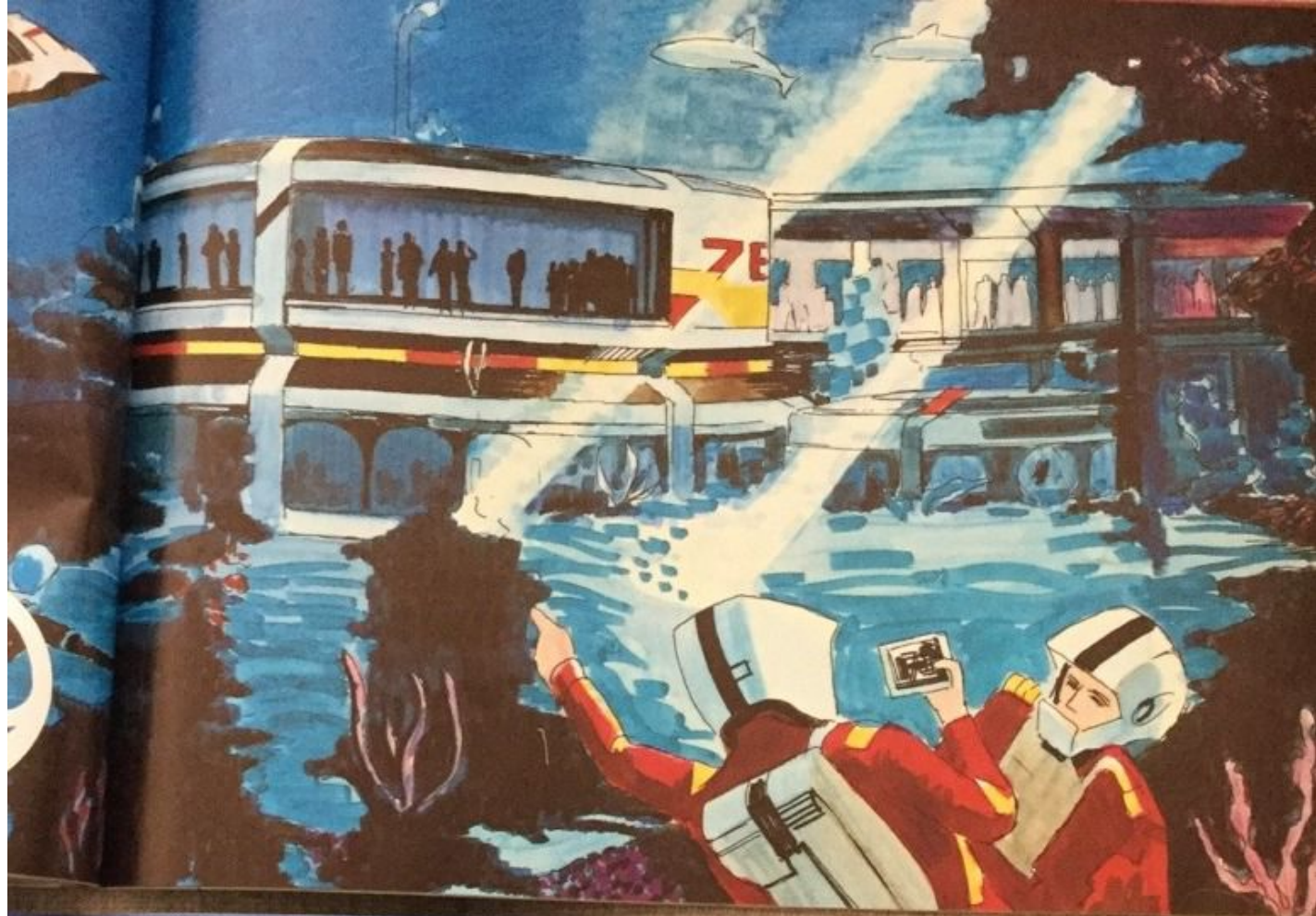


OPENING 1984 *Using Disney magic, the mythical Lord of the Seas will invite guests to embark on an incredible sub-sea journey. Traveling in pearly-like vehicles, visitors will glide through surrealistic scenes from the mysterious and wondrous environments that make up our planet's oceans. As the vehicles near their final destination, Poseidon challenges us to face the oceans wisely, with courage and determination. We then disembark into a startlingly realistic 21st century seabase set within a six-million gallon coral reef teeming with life. You'll be free to examine a myriad of interesting and exciting demonstrations that reflect 21st century technologies in the world of the Living Seas.*



THE LIVING SEAS

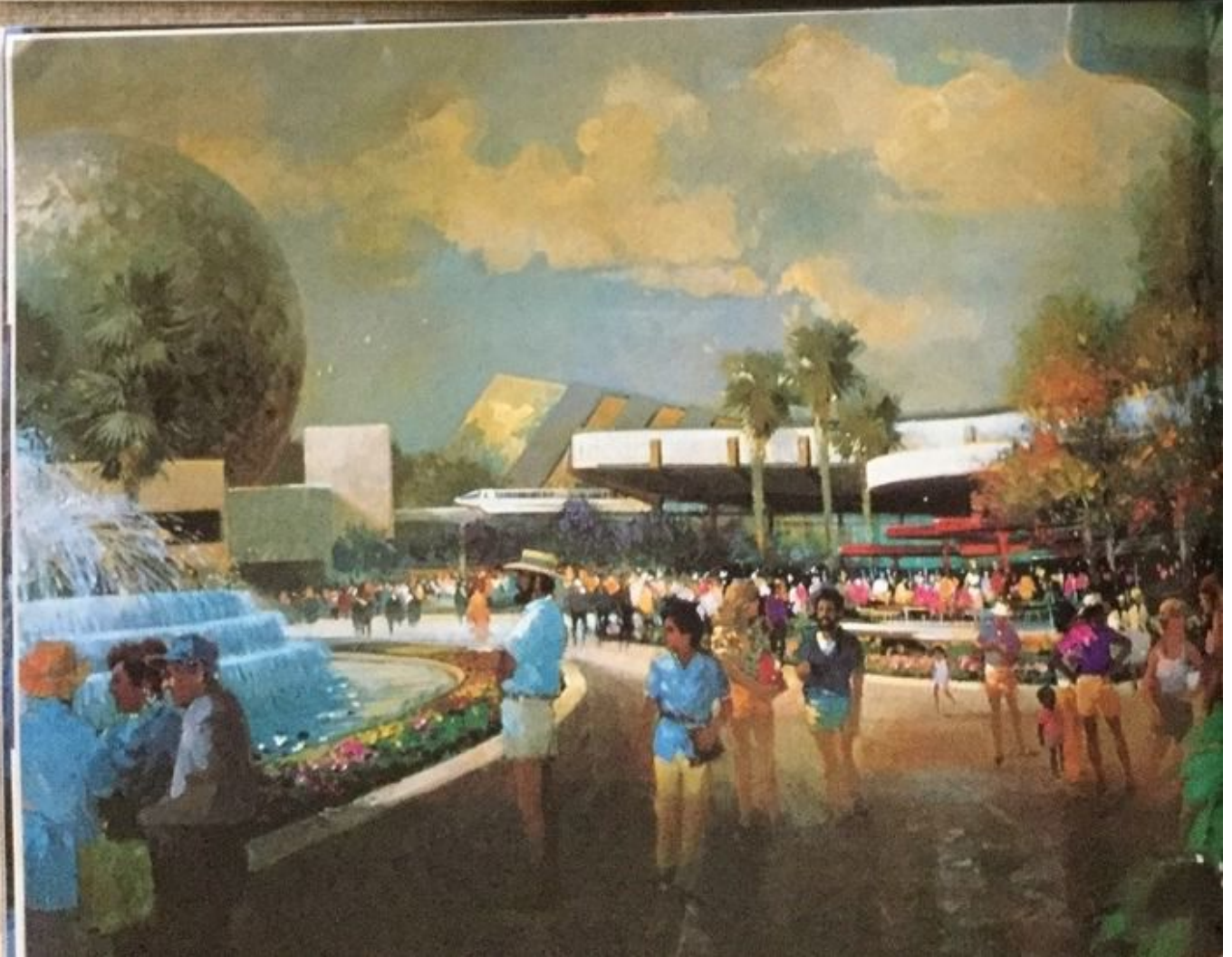




COMMUNICOR

COMMUNICORE







COMMUNICORE

COMMUNICORE IS THE HUB OF FUTURE WORLD, SITUATED AT THE HUB OF FUTURE WORLD, A VARIETY OF DISPLAYS, EXHIBITS, AND SHOWS FORM THIS UNIQUE AREA WHERE YOU CAN COME TO LEARN, RELAX, OR JUST HAVE FUN.

EARTH STATION PROVIDES DIGITIZED ANIMATED GRAPHIC MINI-SHOWS AS PREVIEW TO THE PAVILIONS OF FUTURE WORLD AND WORLD SHOWCASE AND A WORLD KEY INFORMATION SERVICE NETWORK, SPONSORED BY THE BELL SYSTEM, WHICH LINKS VISITORS WITH A SELECTION OF INFORMATION SOURCES THROUGHOUT WALT DISNEY WORLD VIA STATE-OF-THE-ART COMMUNICATIONS INNOVATIONS.

GUESTS EXPLORE ENERGY CONSERVATION, FUEL ALTERNATIVES FOR THE FUTURE, AND OUR ENERGY CHALLENGES TODAY AT EXXON'S ENERGY EXCHANGE DISPLAY AREA. THE BELL SYSTEM DISPLAYS BREAKTHROUGHS IN INFORMATION AND COMMUNICATIONS SYSTEMS WHICH RESHAPE THE WAY WE WORK, LIVE AND LEARN IN THE FUTURECOM. THE AMERICAN EXPRESS TRAVELPORT CARRIES VISITORS OFF TO NEAR AND DISTANT LOCATES IN A TRAVEL SIMULATION ADVENTURE. AND, IN THE ELECTRONIC FORUM GUESTS PARTICIPATE IN AN EPCOT POLL, VOICING THEIR OPINIONS ON A VARIETY OF TIMELY TOPICS.

EPCOT COMPUTER CENTRAL, SPONSORED BY SPERRY UNIVAC, GIVES YOU A FIRST-HAND LOOK AT THE COMPUTER WIZARDRY THAT RUNS THE VAST WALT DISNEY WORLD RECREATION COMPLEX. THROUGH THE MAGIC OF SPECIAL EFFECTS, AN ACTUAL WORKING COMPUTER CONTROL CENTER BECOMES THE STAGE FOR AN ENTERTAINING SHOW SPOTLIGHTING COMPUTER TECHNOLOGY AT USE. THE COMPUTERS THEMSELVES CHANGE FROM PART OF THE BACKDROP TO THE STARS OF THE SHOW AS WE LEARN ABOUT THEIR INNER WORKINGS AND THEIR MANY USES.



COMMUNICORE

Forming the gateway to Epcot Center, CommuniCore is a colorful collage of today's reality and tomorrow's dreams. Situated at the hub of Future World, a variety of displays, exhibits, and shows form this unique area where you can come to learn, relax, or just have fun.

Earth Station provides digitized animated graphic mini-shows as preview to the pavilions of Future World and World Showcase and a World Key information Service Network, sponsored by the Bell System, which links visitors with a selection of information sources throughout Walt Disney World via state-of-the-art communications innovations.

Guests explore energy conservation, fuel alternatives for the future, and our energy challenges today at Exxon's Energy Exchange display area. The Bell System displays breakthroughs in information and communications systems which reshape the way we work, live and learn in the FutureCom. The American Express TravelPort carries visitors off to near and distant locales in a travel simulation adventure. And, in the Electronic Forum guests participate in an Epcot Poll, voicing their opinions on a variety of timely topics.

Epcot Computer Central, sponsored by Sperry Univac, gives you a first-hand look at the computer wizardry that runs the vast Walt Disney World recreation complex. Through the magic of special effects, an actual working computer control center becomes the stage for an entertaining show spotlighting computer technology at use. The computers themselves change from part of the backdrop to the stars of the show as we learn about their inner workings and their many uses.



EPCOT COMPUTER CENTRAL

SPERRY + UNIVAC

SPERRY UNIVAC HAS BEEN THE LEADER IN THE
 FIELD OF BUSINESS COMPUTERS FOR OVER 20 YEARS.
 OUR SYSTEMS ARE THE MOST RELIABLE AND
 EFFICIENT IN THE INDUSTRY. WE OFFER
 COMPLETE SOLUTIONS FOR YOUR BUSINESS,
 FROM SMALL OFFICES TO LARGE CORPORATIONS.
 CONTACT US TODAY TO LEARN MORE.
 SPERRY UNIVAC IS YOUR PARTNER IN
 SUCCESS.

WORLD SHOWCASE

THE WORLD SHOWCASE LAGOON IS A DREAM COME TRUE FOR TRAVELERS TO EPCOT CENTER'S WORLD SHOWCASE. HERE, AMIDST NATIONS STANDING IN FRIENDSHIP BESIDE A BROAD LAGOON, VISITORS WILL LIVE IN A DAY WHAT ONLY WEEKS OF WORLD TRAVEL COULD SURPASS. THEY'LL CROSS THE VAST EXPANSE OF CANADA AND THE GREAT WALL OF CHINA. DINE IN GOURMET SPLENDOR UNDER A MOONLIT EIFFEL TOWER. JOIN THE GALA FESTIVITIES OF OKTOBERFEST IN A BAVARIAN BIERGARTEN. ENJOY THE SPONTANEOUS GOOD CHEER OF AN ENGLISH PUB. FOLLOW THE ROADS LEADING TO ROME. WATCH MORE THAN 350 YEARS OF AMERICAN HISTORY COME TO LIFE. AND MORE.

Canada, Mexico, Japan, China, France, the United Kingdom, Italy and Germany are each meticulously detailed, each a proud testimony to Disney's high standards of entertainment excellence. The American Adventure, host to World Showcase, links the nations of the earth, its position reinforcing America's uniqueness as a country made up of people the world over. Truly one of the most breathtaking shows ever presented about this "nation of many nations," the American Adventure is a theatrical production unparalleled in Disney annals. East and West of the American Adventure, along the promenade cir-



cling the World Showcase Lagoon, you'll discover exciting shows, attractions, restaurants and shops unique to each nation.

Famous Alfredo's of Rome and Les Chefs de France are just two of more than a dozen outstanding restaurants. Hundreds of entertainers, from the silent mimes on the streets of France to the exaggerated Commedia dell'Arte actors of the Italian stage will make you laugh, cry and applaud at their bow. There are an extraordinary number of boutiques, like Toy Soldier specialty toy shop in the United Kingdom as well as artisans, like the Hummel craftsmen of Germany, creating one-of-a-kind gift items.

In Canada and China, CircleVision 360 takes you on a magic carpet ride through some of the most spectacular scenery ever filmed. And flower-laden boats in the Mexico pavilion are the time machines through the country's rich history.

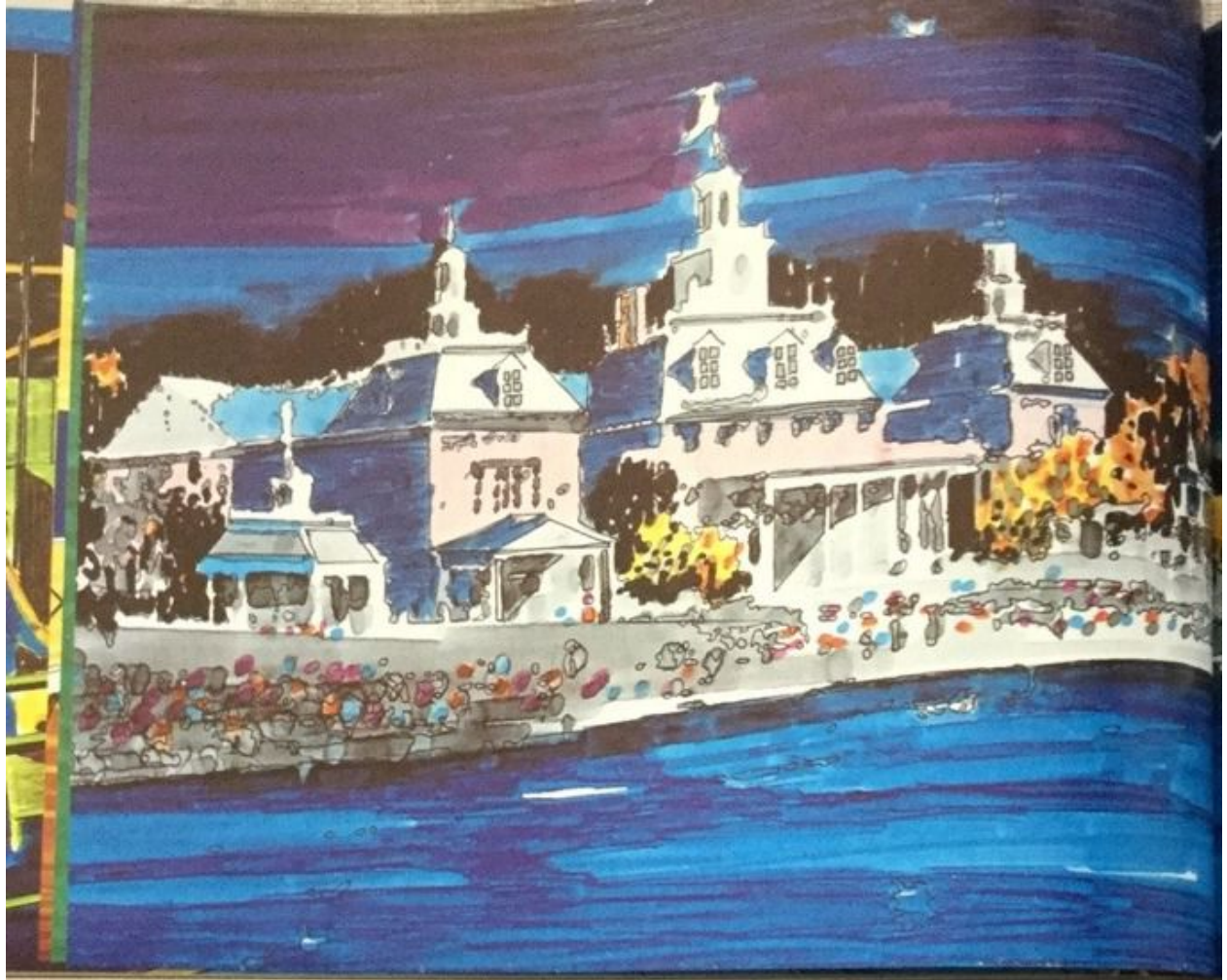
WORLD SHOWCASE

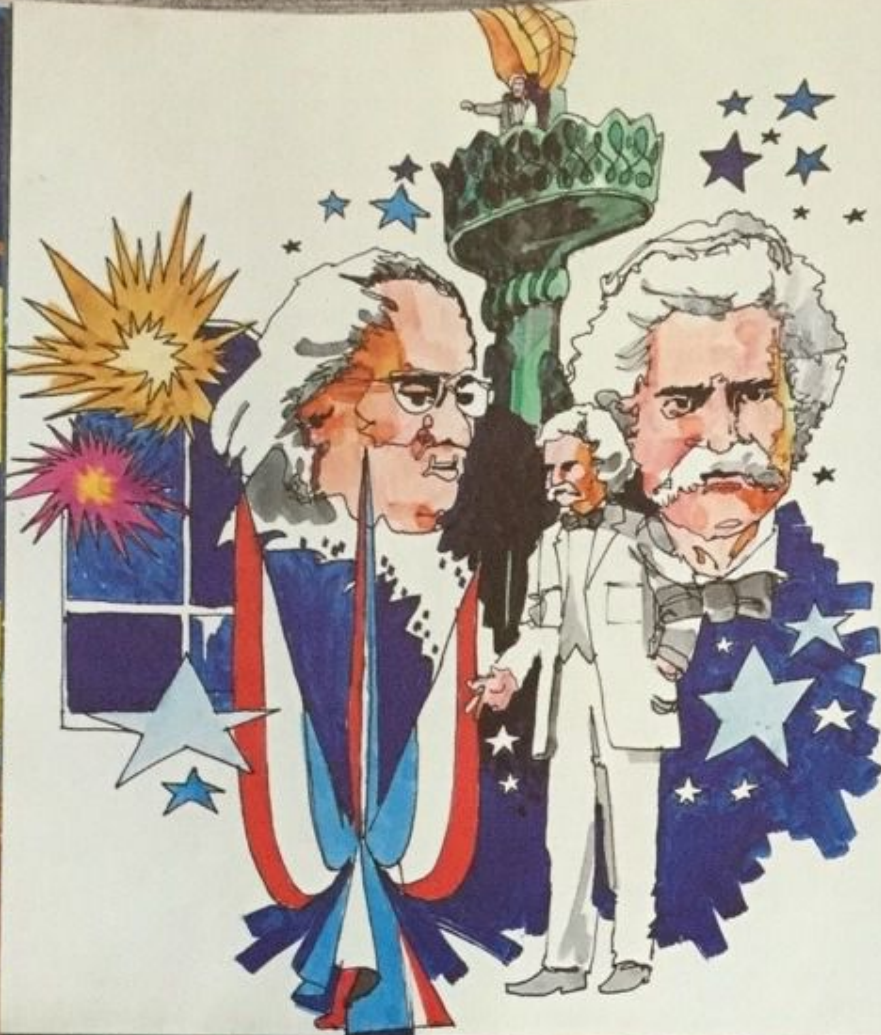
Whether out for a stroll in the meditative Japanese gardens or caught up in the merriment of Germany's Biergarten, you'll meet gaily-costumed young people who've actually come from World Showcase countries. It is their friendliness that forms a bond that stretches to all people.

At the close of each evening, entertainers from every World Showcase country gather at The American Adventure Garden Amphitheater for a sensational international pageant of song and dance, an inspiration for all the world and a heartfelt message for unison from the World Showcase.



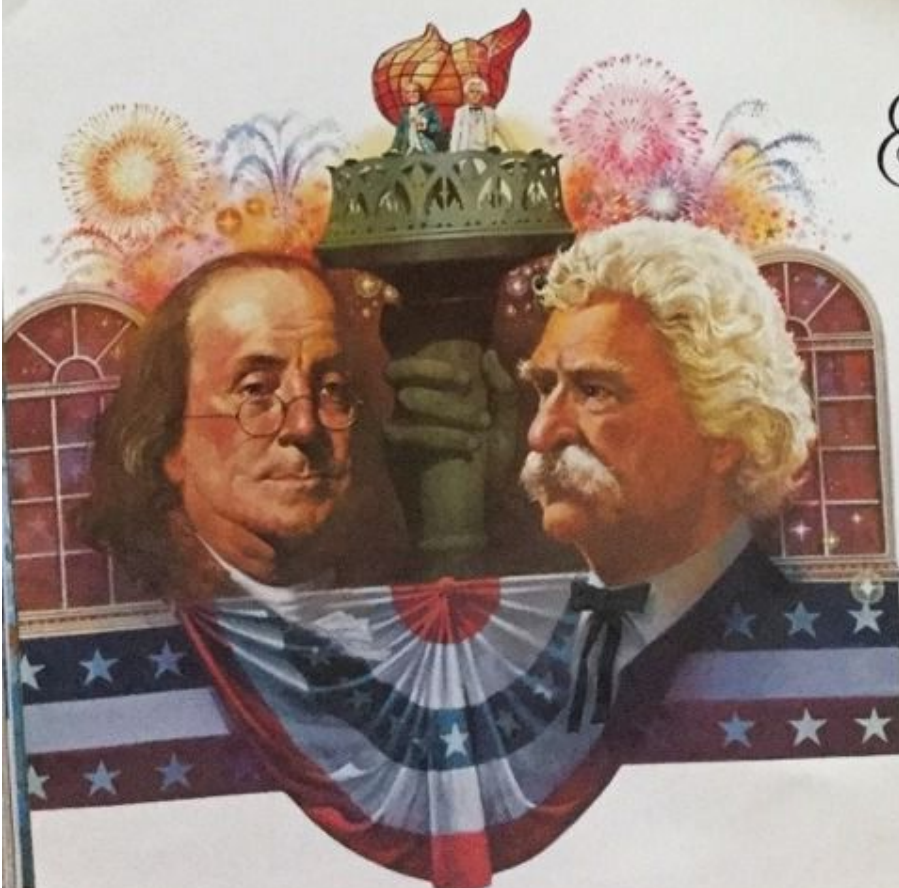






The AMERICAN ADVENTURE

THE AMERICAN ADVENTURE IS A MAJOR MILESTONE
 IN AUDIO-ANIMATRONICS IMAGINEERING. THROUGH
 THE COURSE OF THE SHOW, WE WILL WITNESS THE
 EVENTS THAT CHRONICLED AMERICA, THE LAND OF
 FREEDOM. THE AMERICAN ADVENTURE COMBINES
 LARGE-SCREEN PROJECTION AS A BACKDROP, WITH
 INSPIRING MUSIC AND SPECIAL EFFECTS AND THE
 PERFORMANCES BY THE MOST LIFELIKE AUDIO-
 ANIMATRONICS FIGURES EVER DEVELOPED. BENJAMIN
 FRANKLIN AND MARK TWAIN—TWO OF AMERICA'S
 MOST ELOQUENT SPOKESMEN—LEAD A CAST OF
 MORE THAN 35 FULL-SIZE HISTORIC PERFORMERS
 "BROUGHT TO LIFE" THROUGH DISNEY'S THREE-
 DIMENSIONAL ANIMATION. "BEN FRANKLIN" WILL
 ACTUALLY WALK IN THIS SHOW, A FEAT WHICH
 SIGNIFIES A MAJOR MILESTONE IN AUDIO-
 ANIMATRONICS "IMAGINEERING."
 DISNEY TOUCHES UPON THE CONTROVERSIAL
 ISSUES OF HUMAN RIGHTS. FREDERICK DOUGLASS
 SPEAKS OUT ABOUT SLAVERY. CHIEF JOSEPH
 CALLS FOR THE FINAL SUNSET ON THE INDIANS'
 SUFFERING, AND SUSAN B. ANTHONY ADDRESSES
 THE TOPIC OF EQUAL RIGHTS FOR WOMEN.
 "TO EVERY ONE A CHANCE," BELIEVED THOMAS
 WAFFE. "TO ALL PEOPLE, REGARDLESS OF THEIR
 BIRTH, THE RIGHT TO LIVE, TO WORK, TO BETTER
 THEMSELVES, TO BECOME WHATEVER THEIR
 VISIONS CAN COMBINE TO MAKE THEM. THIS IS
 THE PROMISE OF AMERICA." THIS IS THE
 ESSENCE OF THE AMERICAN ADVENTURE.



The AMERICAN ADVENTURE

Through a multitude of entertainment
 mediums, never before realized collectively on
 stage, we witness the events that chronicled
 America, the land of freedom.
 The American Adventure combines
 large-screen projection as a backdrop, with
 inspiring music and special effects and the
 performances by the most lifelike Audio-
 Animatronics figures ever developed.
 Benjamin Franklin and Mark Twain—two of
 America's most eloquent spokesmen—lead
 a cast of more than 35 full-size historic per-
 formers "brought to life" through Disney's
 three-dimensional animation.
 "Ben Franklin" will actually walk in this
 show, a feat which signifies a major milestone
 in Audio-Animatronics "Imagineering."
 Disney touches upon the controversial
 issues of human rights. Frederick Douglas
 speaks out about slavery. Chief Joseph calls
 for the final sunset on the Indians' suffering,
 and Susan B. Anthony addresses the topic of
 equal rights for women.
 "To every one a chance," believed Thomas
 Waffe. "To all people, regardless of their birth,
 the right to live, to work, to better themselves,
 to become whatever their visions can combine
 to make them. This is the promise of America."
 This is the essence of The American Adventure.



CANADA



CANADA

From a Northwest Indian Village to a 19th century French chateau and the winding, narrow streets of Quebec City, the remarkable diversity of Canadian cultures and the awesome majesty of the wilderness are captured in the Canada pavilion.

The miracle of Disney CircleVision 360 takes you on a breathtaking film tour covering the broad expanse of Canada—the largest country in the Western Hemisphere. You'll watch 50,000 Canadian geese as they take to the skies in a simultaneous flurry of feathers. You'll join the Calgary Stampede and downhill skiers as they soar over moguls and turns. And you'll delight at a reeling aerial view from Toronto's C.N. Tower—the highest free-standing structure in the world.

With the climax of your whirlwind CircleVision 360 tour, your adventure becomes a walking journey through Canada's exciting back country. Beyond a charming Quebec thoroughfare, you'll wind down a path blasted out of a steep mountainside. You'll pass a river bank, footpaths and bridges, tall pine trees, rushing waterfalls and an abandoned mine tunnel of the Klondike gold-rush days. From holes cut deep into the tunnel, you'll have a perfect view of Salmon Island, where lumberjacks compete in riotous logging games year-round. Totems and painted wood buildings mark the Northwest Indian village, where natives share the skills that characterize their culture.

What better way to satisfy a robust appetite at the end of the trail than at Le Cellier restaurant, which features a menu of hearty Canadian favorites. Stroll or sit and recapture the adventures of the afternoon in wondrous Victoria Gardens, where bright annuals make an informal tapestry of patterns and colors.

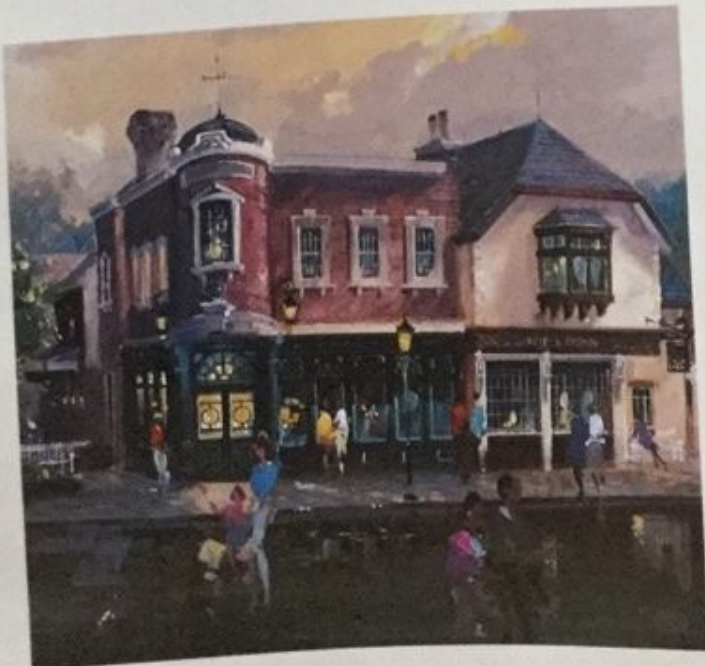


CANADA



UNITED KINGDOM

United Kingdom



Green lawns, gabled rooftops, shops along cobblestone streets and a charming waterside pub provide a typically "British" setting for the United Kingdom pavilion.

Snuggled alongside the World Showcase Lagoon, the traditional pub offers a fare to satisfy the king-sized appetite. Aromas of crisp fish and chips and heady Welsh rarebit float through the comfy interior as guests quaff a pint or two with old friends and new.

On the street, you're met by energetic entertainers, including the Pearly Kings and Queens, whose comedy style is as bright as the pearly buttons sewn on their costumes.

A duplicate of Hampton's Court castle, with its high, cathedral ceiling and fairy-tale appearance, houses a wide assortment of English-made toys. English rocking horses, Victorian dolls and other imports fill the spacious hall.

His Lordship shop features executive gifts, pipes and tobacco products, and accessories for gentlemen. Biscuit and china shops of quaint half-timber to formal Classic Georgian design offer cookies, cakes and other British food specialties, as well as fine china items and porcelain figurines.

The cool greenery of an English park lures you to pause for a moment's rest and relaxation. For a bit more lively entertainment, music and theatrics are performed under the shade of a gazebo in the open city square.

By the time you leave the United Kingdom pavilion your visit will have filled your senses with the true mystique and presence that are the British Isles.

PARTICIPANTS: BASS EXPORT LTD., FRINGLE OF SCOTLAND, ROYAL DOLLERY

UNITED KINGDOM



FRANCE





FRANCE

The flavor and romance of Paris at the turn of the last century come to life in the France pavilion.

The monumental Eiffel Tower is seen high above the tree-lined boulevard where white-faced mimes work with objects not really there and folk dance groups from Brittany and Provence perform spirited dances. From elegant belle époque buildings, wonderfully intoxicating aromas filter through shop doors and windows, providing irresistible calling-cards to passersby. You might select a fragrant French perfume, or succumb to the taste-tempting scents of cheese, wine, mouth-watering pastries, or freshly baked bread.

Charming umbrellas dot the classical setting of a sidewalk cafe. Here, patrons savor a beloved French pastime—relaxing with a favorite beverage while watching the world go by. At Les Chefs de France restaurant, the culinary expertise of superstar French chefs—Paul Bocuse, Roger Verge and Gaston Lenotre—promise a meal that's magnifique!

France, the country and its people, becomes the focus as the French Republic Theatre treats you to a film journey through the nation's most famous locales. The sultriness of the Riviera, the splendor of the palace at Versailles, and the richness of the fertile Loire Valley are adventures made more magical by the great classical music of France's finest composers.

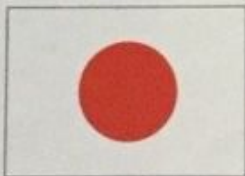
Later, you can stroll through Les Halles, as it once was—a bustling marketplace filled with exciting exhibits and dedicated to the fine art of browsing.

In the serene and more intimate areas of the pavilion, faint sounds of the French boulevard, echoes from meandering paths, and pleasant memories of the charming shops once again tantalize the senses and leave a final fragrant image of the romance to be found in France.

PARTICIPANTS: BAYTON & GUESTER (BBQ), GUY LAROUCHE, LANSON CHAMPAGNE, THE FRENCH CHEFS (PAUL BOCUSE, GASTON LENOTRE, ROGER VERGE, AND ASSOCIATE DIDIER FOURET)



JAPAN



Japan

A giant red Torii proclaims "Good Luck" to all who pass the massive gateway of the Japan pavilion. Beyond it, a beautiful five-story pagoda invites you to stroll its garden, a one-third acre jewel box rich with living Japanese art.

The landscape is a picture of energy and repose in harmony. Brightly pebbled koi ponds teem with multi-colored fish. Giant bamboo, blossoming trees, black pines and neatly sculpted shrubbery lend contrast in texture and shade. While all around the gentle, steady cascade of a waterfall and the fragrance of pine permeate the senses.

A Candy Man adds a light-hearted touch as he wanders the pavilion grounds, magically creating herons, fish and other fanciful shapes from his larder of rice taffee. Dextrous fingers, recalling the ancient skill of Ikebana masters, fashion exquisite floral arrangements. And a Boys and Girls Day celebration brings forth a daily parade of colorful kites and dolls.

In the background loom the towers of a feudal castle, where valuable art treasures from the Land of the Rising Sun are protected and displayed. At the foot of a wooden bridge stands an intricately designed replica of the Katsura palace. A palace for splendid dining, this impressive recreation is actually a Japanese-style cafeteria serving delectable yakitori skewered meats and slowly-simmered vegetables.

The grand Sishinden Hall houses a large Mitsukoshi department store. Mitsukoshi, synonymous with "serving with sincerity" since 1672, presents the very finest in Japanese art and industry, and offers visitors yet another dining adventure. Up the grand stairway on the second floor, you'll enter the Mitsukoshi restaurant featuring a delicious tempura bar and five teppanyaki rooms. It is within these rooms that Japanese master chefs create their culinary masterpieces in a spellbinding tableside presentation. What more fitting climax to your wondrous journey through the Japan pavilion.

PARTICIPANTS: MITSUKOSHI, INC.



JAPAN



ITALY



ITALY

Playful gondolas and their barber-striped moorings reflect the world of romance and classic grace of Epcot Center's Italy pavilion.

You'll begin a love affair with Venice as you stand in the shadows of a breathtaking campanile, or bell tower, in St. Mark's square and shop at the Northern Italian arcade and at various Neapolitan craft shops, filled with handcrafted leather goods, pottery and glass figurines.

A recreation of the Doge's Palace stands in the midst of the square, past the sculpture of the well-known "Lion of St. Mark." Inside, you'll find a treasure trove of fine art, jewelry and crystal, plus a wealth of culinary delights.

When in the Italy pavilion, dine as the Romans do—at Alfredo's The Original of Rome. The epicurean star, Fettucine All' Alfredo, joins a cast of tempting pasta dishes, veal specialties, Italian salads and exotic desserts.

Patio diners enjoy a perfect view of the outdoor provincial theater, where Commedia dell'Arte players and Carnival in Venice dances perform in the finest tradition of the arts.

Just opposite Alfredo's, a monumental statue of the sea god Neptun stands with his playful dolphins amidst a cascade of water from a Renaissance fountain.

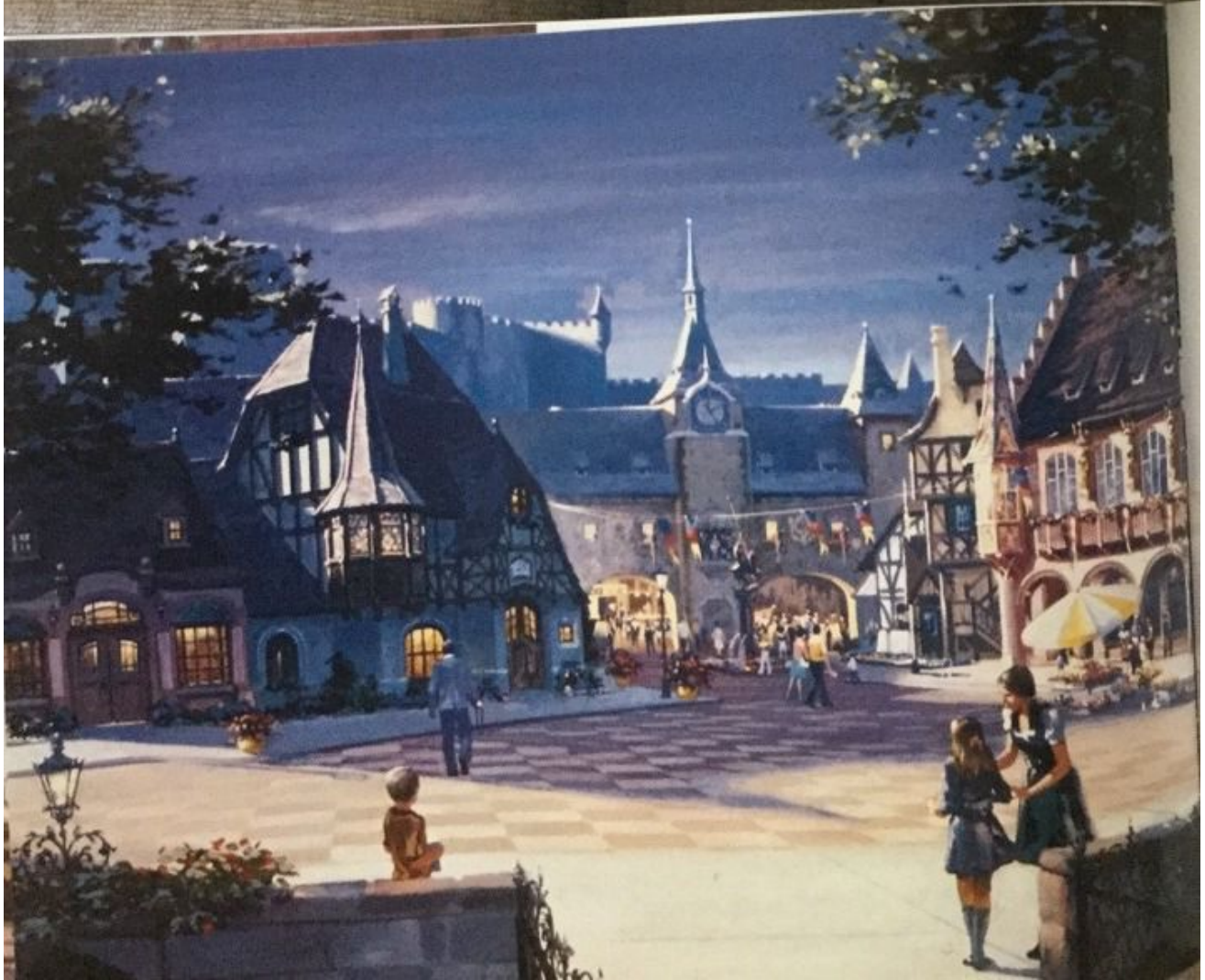
A visit to the Italy pavilion will be a truly memorable experience for you who have hearkened to its alluring song.

PARTICIPANTS: ALFREDO, THE ORIGINAL OF ROME, BRIOLO, RICASOLI & BERBANO WINE OF ITALY

ITALY



GERMANY



Germany



Food, festivity and drink are offered in the traditional Oktoberfest setting of a Biergarten in the Germany pavilion. Here, medieval spires and half-timber shops lend a picturesque air to a spacious Platz, or town square. Bright colors pour from window boxes, while, within those shops, artisans create handsome crafts and artifacts that celebrate the German love for art, music and literature.

"Made in Germany" is indeed a worldwide mark of the highest excellence. The Germany pavilion offers a wealth of imports ranging from hand-carved music boxes, cuckoo clocks, to porcelain figurines and beer steins. Each item is a testimony to

the high standards of German craftsmanship.

Every hour strikes a whimsical chord as a glockenspiel springs to animated life, ringing out the time of the clock tower.

Through the lower archway, mugs clink in unison and everyone is invited to link arms and sway to the music in the Bavarian Biergarten.

Inside, it's all activity and you're encouraged to join the waltzes, polkas and lift steins of famous Beck's brew high in song and good will as a dinner show of high stepping folk dancers tops off a fulfilling experience in a country of proud heritage and enchanting fairy tale beauty.

PARTICIPANTS: BAHLEN, BRAUEREI BECK AND CO., GOEBEL, HUTSCHENREUTHER, SCHMITT SÖHNE



CHINA



CHINA



CHINA

China, steeped in a cultural heritage that reaches back to the dawn of civilization, opens its gates to Epcot travelers.

Fronted by a great serpentine wall, this World Showcase pavilion captures all the wonder and enchantment that is the People's Republic of China. Stately pines and Chinese bamboo grace the gardens where willows bend over softly hued lotus ponds and the fragrant scent of jasmine permeates the air.

Inside the ornately crafted Temple of Heaven, 6000 years of dynastic rule can be traced in the delicate artwork. The Temple of Heaven marks the entrance to a magnificent CircleVision 360 theater where a poet-storyteller magically appears on screen to invite you on a journey across the ageless face of China. You'll be surrounded by scenery few have ever seen. You'll enter the forbidden city of Beijing; visit Potala Palace, one time home of the Dalai Lama; wind along the Yangtze and Yellow Rivers.

The China pavilion unlocks the mysteries of the past for the Epcot Center traveler today.

MEXICO

Mexico



Within the majestic pyramid of the Mexico pavilion lie the relics of lost civilizations together with the bold new emblems of a country moving proudly into its future.

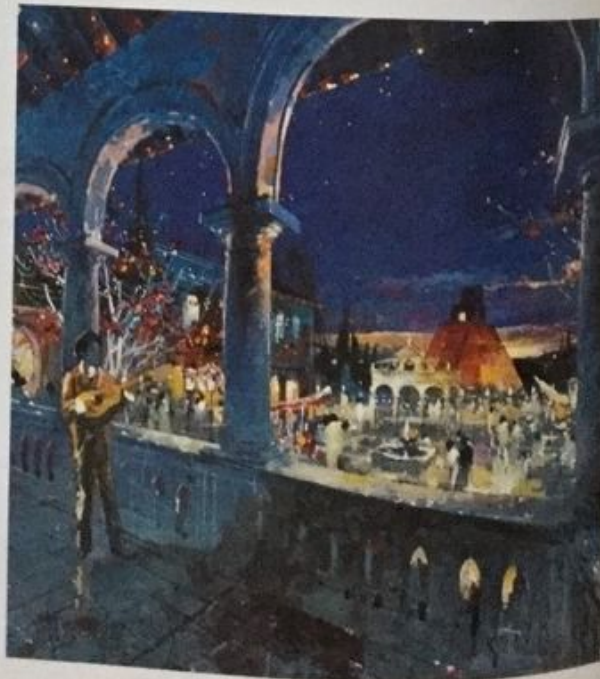
You'll enter a lakeside village plaza complete with colorful shops, and a restaurant featuring the famed cuisine service of Mexico City's incomparable San Angel Inn.

Folkloric groups from Veracruz and Yucatan perform their festive numbers as flower-laden boats whisk you off on a cruise through Mexico's rich heritage, where film, *Audio-Animatronics*, and three-dimensional settings blend in scenes recreating ancient, colonial and modern Mexico.

Faded and broken cavern walls line the dense jungle waterpath to adventure—back, back into ancient Mexico. Time begins to peel away as a life-size stone image of a Mayan priest magically comes to life to welcome you. Dancers and unusual music weave the tale from an advanced Mayan culture through the Toltec reign, to the end of the powerful Aztec nation.

Songs of celebration then fill the wind and children play and dance to tunes of modern day festivals. The excursion boat glides into the resort areas of Mexico for a holiday on film, before you're bid a fond "adios" with a shower of fireworks to light your way.

PARTICIPANTS: MOCTEZUMA BREWERY, SAN ANGELO INN



MEXICO



COMING—WORLD SHOWCASE

DENMARK

SPAIN

COMING—
WORLD
SHOWCASE

ISRAEL

The Menorah, symbol of the State of Israel, stands at a courtyard center, surrounded by buildings reflecting the rich balance of new and old. Walk through ancient Jerusalem to an amphitheater to hear performances of both classical and folk music. Sample native dishes under the shade of olive and cypress trees in the Israel pavilion.

ISRAEL

MOROCCO

EQUATORIAL AFRICA

Equatorial Africa pavilion takes you on safari through a world of natural beauty and adventure. You'll view the drama of wild animals in the safety of a giant Colocedra tree. You'll feel the electrifying energy of the "Heartbeat of Africa" show and sway to the jungle beat of music and dance. Alex Haley, noted author of *Roots*, is your guide to "Africa Rediscovered," an adventure uncovering the continent's ancient cultural heritage.

SPAIN

Take a spectacular journey through Spain by film to little known and out-of-the-way vacation Edens. A ride attraction captures the country's passionate heritage and spirit in her arts. In a waterside restaurant, indulge in tapas, or Spanish-style finger food—a blend of varied ingredients but suitable to simple tastes. And browse the market places of striking contrast, from pueblo village to aristocratic opulence.

SPECIAL EFFECTS

SPECIAL EFFECTS

MKC TRAVEL PACKAGE

MKC TRAVEL PACKAGE

