

Domeliner
"CITY OF
LOS ANGELES"

DAILY BETWEEN
CHICAGO • LOS ANGELES

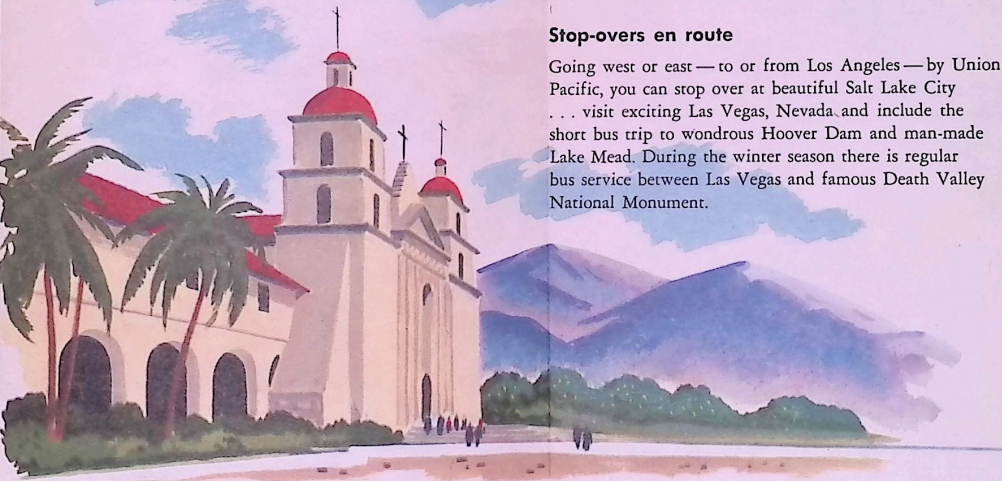


Many things to see and do in Southern California

This all-year vacationland knows no seasonal limitation . . . recreational and sightseeing opportunities are unlimited. Whether you seek gay city life of famous hotels, night clubs and restaurants, or a relaxing resort . . . the choice is yours. The Riviera-like coastline from Santa Barbara to San Diego has charming resort or residential cities. Take an ocean voyage to Catalina Island or visit Old Mexico . . . and you'll want to see famous Disneyland, "Marineland of the Pacific," or the new "Pacific Ocean Park," amusement park, at Santa Monica, world famous Farmer's Market, Forest Lawn Memorial Park, and Olvera Street to name a few. In Hollywood's television studios you can see popular TV shows and stars. Great sporting events occur in every season, including major league baseball (National League) as the "Dodgers" now make Los Angeles their home. Historic Missions are a year 'round favorite. Gray Line Tours enable you to see the most at the least expenditure in time and money.

Stop-overs en route

Going west or east — to or from Los Angeles — by Union Pacific, you can stop over at beautiful Salt Lake City . . . visit exciting Las Vegas, Nevada and include the short bus trip to wondrous Hoover Dam and man-made Lake Mead. During the winter season there is regular bus service between Las Vegas and famous Death Valley National Monument.



Relax in Luxury in the

Only UNION PACIFIC'S "CITY OF LOS ANGELES" provides three Astra Dome Ca

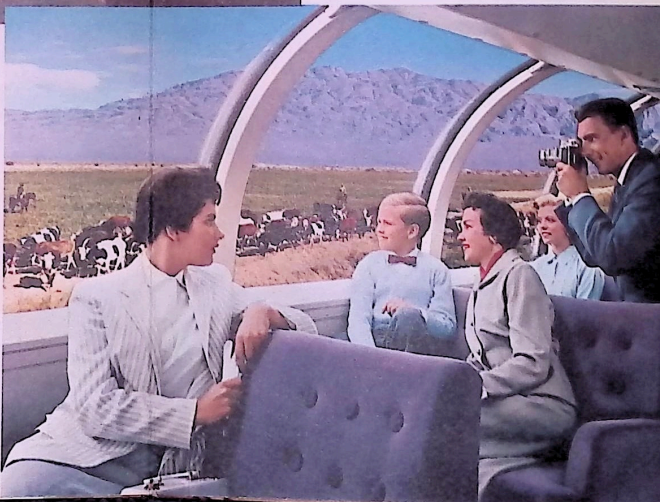


DOME COACH

All Coach passengers are at liberty to visit the Dome room upstairs in the Dome Coach. There are 24 divan type seats, as pictured at left, unreserved and for which there is no charge. Downstairs are regular reserved seats of latest design, as in the other coaches on this train. Camera fans enjoy "shooting" their own "Westerns" from the Dome, or just watching the passing scenery and famous cities. Double air-conditioning affords complete comfort.

DOME LOUNGE CAR

You will never ride in a more beautiful passenger car than this Dome Lounge Car. Its interior decor will remind you of the comfort and luxury of a fine private club. In addition to the Dome "observatory" with 24 divan type seats, set at an angle so all may have an unobstructed view . . . it has, downstairs, a spacious main lounge, a semi-private cocktail lounge, and a private card room. In all there is radio or pleasing recorded music.



NEW ASTRA DOMES

Cars: *Dome Diner, Dome Lounge Car, and Dome Coach*

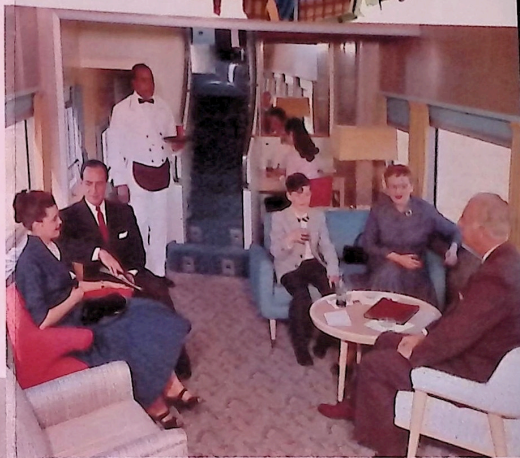
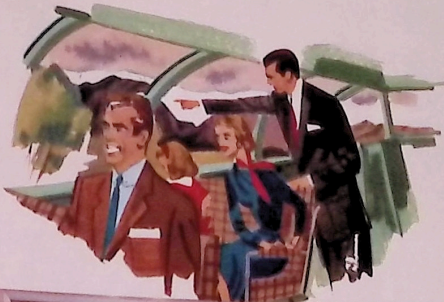
Between CHICAGO and SOUTHERN CALIFORNIA

More and more people every day choose this great Domeliner for the newest and finest accommodations. Why don't you, too, treat yourself to the finest. It costs no more. There's *no-extra-fare*.

On these pages you will find pictures and information about the fine facilities of the Dome Coach and Dome Lounge Car.

On the inside pages are pictures showing the thrill of Dome dining. The *only* Dome Dining Cars in the world are on the Domeliner "City of Los Angeles" (and its companion Domeliner "City of Portland," between Chicago and Portland).

There are no finer trains in the world than Union Pacific's Domeliners . . . certainly no train between Chicago and Southern California offers you as much as the Domeliner "City of Los Angeles."

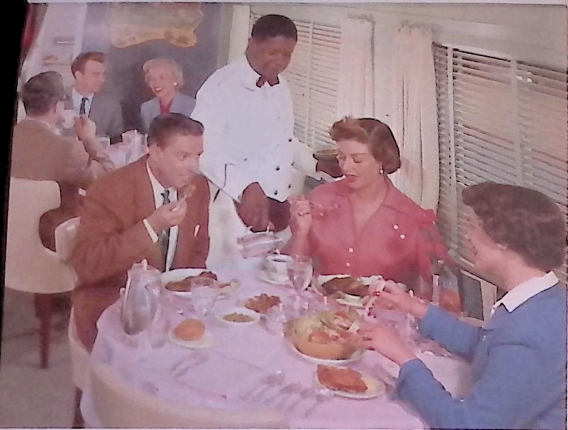


The Main Lounge, downstairs in the Dome Lounge Car, has your choice of beverages . . . soft music . . . convenient writing desk and current magazines and newspapers.

In the Dome Lounge Car there's also a cocktail lounge and, pictured at left . . . a private card room where congenial passengers can engage in their favorite card games.







A section of the beautifully appointed main dining room.

Dine while you view the passing scenic panorama

What a wonderful setting in which to enjoy your selection of fresh foods, skillfully prepared and graciously served. It's "roof garden" dining while viewing mile after mile of thrilling western scenery; a great experience—one you'll always remember.

The main downstairs dining room is really luxurious in atmosphere and appointments. The Gold Room is an intimate private dining room, smartly decorated and featuring gold dinner service, and pastel tinted linen. It seats up to ten and may be reserved in advance for private parties or family groups.

Complete relaxation for complete travel enjoyment

When you travel by Union Pacific you are assured of a completely restful journey every moment of your trip—day and night.

For Coach patrons the "City of Los Angeles" provides the finest of modern coaches, plus the Dome Coach. There is a special Cafe-Lounge Car where moderately-priced meals are served; also a la carte service and special menus for

children. Coach passengers may also dine in the Dome Dining Car, if they desire.

The "City of Los Angeles" Domeliner offers you a choice of the very newest style in Pullman accommodations. New Pullmans have push-button doors a child can open. Spacious bedrooms—single and en suite—compartments and drawing rooms have enclosed toilet facilities.



Women patrons in the new bedrooms or compartments will be delighted with vanity mirror and wash basin with cosmetic tray. Each room has enclosed toilet facilities.



Latest style Coaches are not only economical but are designed for restful comfort, day or night. The seat backs may be adjusted to reclining positions and the full-length leg rests are foam rubber padded, assuring head-to-toe comfort.

In addition to the three Astra Dome cars the "City of Los Angeles" also features a beautiful Redwood Club-Lounge . . . it is in a new Pullman which has five double bedrooms of the very newest design.



FAMILY PLAN FARES

More and more families are taking advantage of Union Pacific's Family Plan Fares . . . which afford a substantial savings whether you travel Coach or Pullman (they do not apply to *space charges* in Pullmans). To take advantage of these money-saving Fares, the going trip must start on a Monday, Tuesday, Wednesday or Thursday; return trip can start any day. There are also liberal stopover privileges and generous baggage allowance.

HERTZ RENT-A-CAR SERVICE

Avoid wear and tear on your car and on your nerves. Travel by train, in restful comfort, and on arrival rent a new car from Hertz Rent-A-Car service. Rates are very reasonable and include insurance. We can arrange in advance to have a Hertz car available for you at destination. Just ask your ticket or travel agent.



Comfortable beds and clean, crisp linens add to the pleasure of Pullman travel. A newly designed ladder with hand rail is an added convenience.