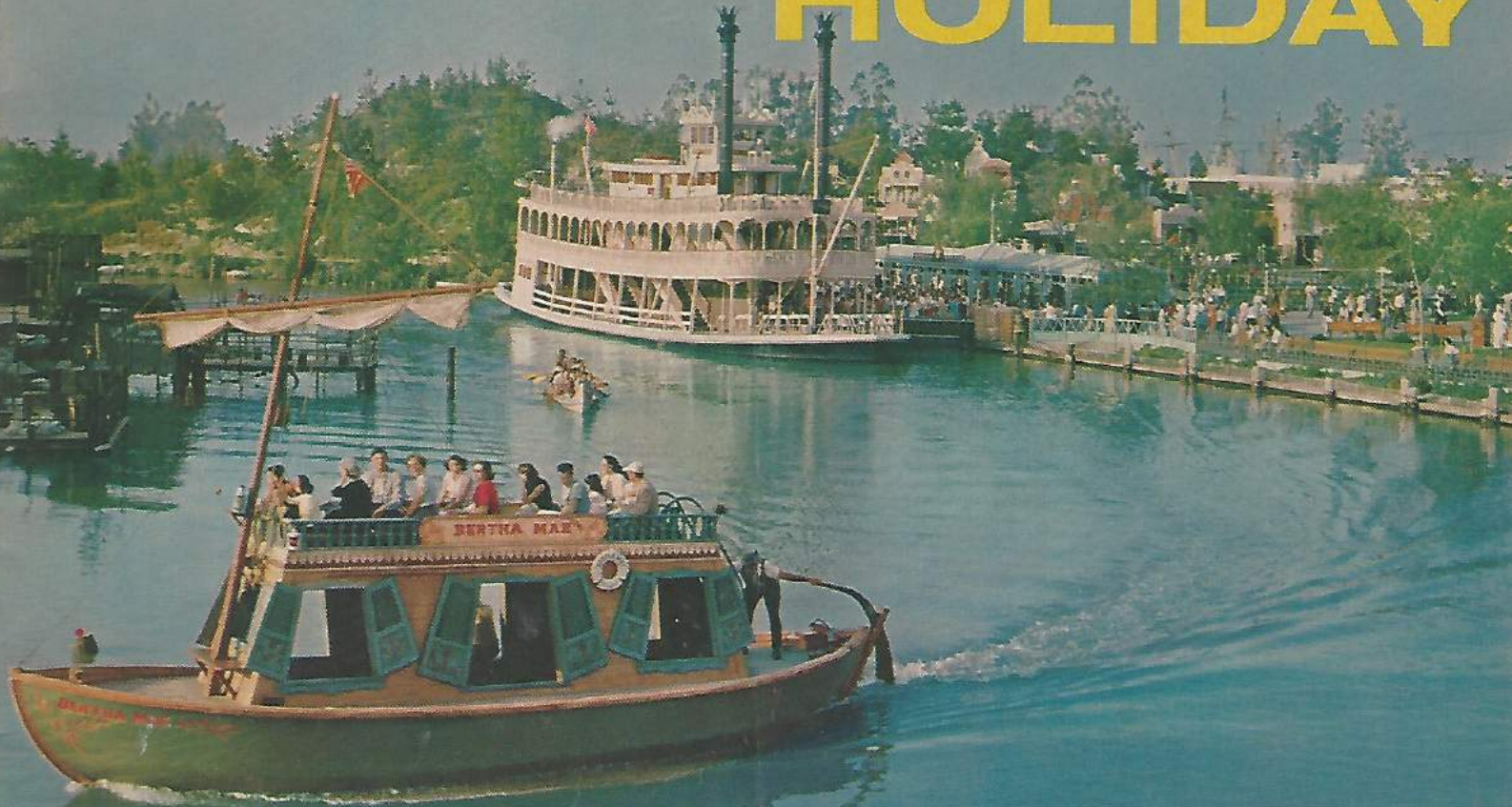


SUMMER, 1957

Disneyland

HOLIDAY



IN THIS ISSUE

- Information about Disneyland
- Puzzles and Trip Diary
- What to see in Southern California
- Color Pictures of Disneyland

© Copyright 1957
Walt Disney Productions



Walt Disney and Friend

On July 17, 1955, a dedication plaque was placed at the base of the flagpole in Town Square at Disneyland, and after 20 years of dreaming and planning, the vision of the man you see at the left became a reality.

Today, only two years later, more than 7 million people have visited this Magic Kingdom, and many of them have paused for a few moments at the base of Town Square's flagpole to read the following words:

"To all who come to this happy place . . . WELCOME.

"Disneyland is your land. Here age relives fond memories of the past . . . and here youth may savor the challenge and promise of the future.

"Disneyland is dedicated to the ideals, the dreams, and the hard facts that have created America . . . with the hope that it will be a source of joy and inspiration to all the world."

WALT DISNEY

Though he can number among his friends many of the world's great and famous, Walt Disney is never happier than when with one of the four-legged creatures. He is shown here with Atom, a burro who holds the distinction of being Disneyland's first citizen—he was born on the Magic Kingdom's Pony Farm shortly after Disneyland opened.

Walt shares his love for animals with many millions of persons, just as he shares his enthusiasm for Disneyland with the more than 7 million persons who have visited the Magic Kingdom.

His enthusiasm for Disneyland dates back more than 20 years—20 years of planning, preparing, designing and finally building.

Walt's planning was for a totally new concept in family entertainment and attractions based on his storybook classics, on America's great pioneer heritage, the wonder world of nature and the great scientific and technological advances which the future holds in store.

So Disneyland, Walt Disney's dream-come-true, contains all these elements—and many more. It's a place to have fun and with the fun it is a place where you can learn, a place which the family can enjoy together and where there is something (or many things) for each individual member of the family.

This was Walt Disney's dream, now translated into the reality of broad, flowing rivers, desert rock formations, lush, flowering jungle and gaslit scale-size buildings: A place for the young in heart of all ages to find happiness and knowledge.



An avenue of flags marks the entrance to Tomorrowland, preview world of the future.

Table of Contents

	Page
Walt Disney and Friend.....	<i>Inside Cover</i>
There's Always Something New.....	1
What Is Disneyland?.....	2
More Fun for Disneyland Visitors.....	3
What to See in Southern California.....	4
Picture Page of Disneyland Visitors.....	5
A Day at the Magic Kingdom.....	7
Color Pictures of Disneyland.....	8, 9
Nighttime Spectacle—"Fantasy in the Sky".....	11
Puzzles for the Young Traveller.....	12
Frontierland's Indian Village.....	13
Storybook Land—Miniature Kingdom.....	14
How to Keep a Diary of Your Trip.....	15
Information for Your Trip to Disneyland.....	16
<i>Maps: Main Routes to Southern California, Inside Back Cover; Main Routes to Disneyland, Back Cover.</i>	

About the Cover

From the shaded balcony of a Frontierland restaurant, a scene out of the pages of the 19th Century unfolds below us on the Rivers of America, our cover subject. As the 105-foot long "Mark Twain," first paddlewheel steamboat built in the United States in 50 years, docks to load its 300 passengers, an Indian war canoe glides swiftly past her bow. In the foreground a Mike Fink keelboat cruises by, while on the left is Tom Sawyer Island, a favorite of youthful adventure seekers. Bustling rivers provide some of Disneyland's favorite attractions.

There's Always Something New

Walt Disney, often called a "restless creator" by people in the entertainment field, has more than lived up to that title with his most ambitious achievement, Disneyland.

Not content with the world-wide enthusiasm and acclaim which have greeted Disneyland ever since its opening two years ago this Summer, Walt has more than fulfilled a promise he made to the public on July 17, 1955: he has continually added the new, the entertaining and the educational for the enjoyment of Disneyland visitors.

Proof of Disneyland's success is the fact that more than 7 million people, representing all ages and interests, have visited this Magic Kingdom.

It all adds up to one fact: you haven't seen Southern California until you've visited Disneyland.

Summertime, 1957 witnesses the unveiling of still more new and unexpected additions and creative improvements.

There's now a walk-through inside the famous Sleeping Beauty Castle in Fantasyland; "Fantasy in the Sky," a colorful fireworks display, every night of the week during the Summer; and many more fresh new attractions unveiled for the Magic Kingdom's third Summer season.

These new adventures are featured in stories on Pages 3 and 11 of this issue.

They represent an added "plus" for your visit to Disneyland, Walt Disney's Magic Kingdom.

The Editors.



From the heights of a lofty helicopter, Disneyland's 60 acres of fun-filled attractions are seen far below.

What Is Disneyland?

An entirely new concept in family entertainment awaits visitors at Disneyland.

From the moment you enter its nostalgic Main Street of early America, you are transported out of the world of today into a realm where time seems to stand still, where memories of the past and dreams of the future combine to ensure a day in your life that will never be forgotten.

Disneyland is built on 60 acres of former orange and walnut groves and is divided into four "lands" and Main Street, the heartline of 1900 America.

These "lands," all radiating from the Plaza at the end of Main Street, are Tomorrowland, where man's dreams of the future become the realities of today; Adventureland, the wonder world of nature's own design; Fantasyland, where childhood stories become realities for the young at heart of all ages; and Frontierland, depicting the story of a young and enterprising nation and a pioneer people moving Westward.

At Disneyland, you will find more than 35 recreational attractions and amusements to fascinate each member of the family; more than 15 free exhibits and shows; and 50 shops and stores.

Disneyland's purpose is enlightenment, its product happiness for adults and children alike. The detail and authenticity of each land was a "must" to meet the standards of highest caliber entertainment Walt Disney has always given the people of the world.

Today, two years after Disneyland's opening, Main Street stands as a page out of America at the turn-of-the-century, at the crossroads of an era. The gas lamp is giving way to the electric lamp, and the horse car to the auto car.

Tomorrowland's theme is progress, and time marches only toward the future. It is the atomic age of 1987, where rocket ships blast off for the moon; miniature cars race over Autopia, the safest super highway in the world; and scientific, educational exhibits line the avenues.

In Fantasyland, you fly with Peter Pan over Moonlit London, race through the streets of England with Mr. Toad, and see a panorama of all Disneyland below you from the lofty Skyway.

America's past is still part of our heritage in Frontierland. You relax on the Mark Twain sternwheel riverboat, explore Injun Joe's Cave and Fort Wilderness on Tom Sawyer Island, see tribal dances in the Indian village and watch an old-West stage show at Pepsi-Cola's Golden Horseshoe Revue.

You glide in an explorer's launch along exotic and mysterious jungle rivers in Adventureland, excitement mounting as your guide steers his craft among life-like alligators and hippos, jungle savages and elephants, and escapes the perils of a beautiful waterfall.

All this—and much more—is Disneyland, "The Happiest Place on Earth."

New Attractions Mean More Fun for Disneyland Visitors

Disneyland has taken another giant step forward in the realm of creative and fascinating new adventures ready for this Summer season.

Foremost amongst the "new" which are now ready for the enjoyment of guests at Walt Disney's Magic Kingdom is the unveiling of the inside of the Sleeping Beauty Castle in Fantasyland.

Previously a landmark to the millions of Disneyland visitors from all over the world, the Castle has "come to



In this scene from the Sleeping Beauty Castle walk-through, the Princess has fallen asleep after piercing her finger on a spinning wheel, while the Wicked Witch stands over her.

life" through a series of exciting "look-into" scenes which visualize the ageless love story of Sleeping Beauty and her Prince Charming.

New techniques in Disney story presentation effects make the walk-through within the turrets, battlements and corridors of the Castle another Disneyland "first."

Re-created from the story of Sleeping Beauty, the 12 scenes depict such fabled events as the casting of a spell over the Princess by the Wicked Witch ("she shall prick her finger on a spinning wheel"); the burning of all the spin-

ning wheels by order of the King; the Good Fairies hovering over the Princess and changing the Witch's curse so that the Princess would not die, but rather "sleep until awakened by True Love's kiss."

As an added bonus to castle visitors, each family group viewing the Sleeping Beauty walk-through will receive a beautiful color booklet explaining the story of the Princess and her Prince Charming in exciting pictures and words.

Another new feature in Fantasyland is "Midget Autopia," a journey in small autos that takes youngsters on a jaunt along a road with surprises at every turn—an outdoor version of the famous "dark rides" long a favorite of Fantasyland guests.

In Tomorrowland, the preview world of the future, a new streamlined train, a House of the Future and a water cruise in ultra-modern boats piloted by guests themselves are now in operation.

The train, called the Santa Fe and Disneyland Viewliner, is similar in design to experimental trains now in use. Zipping passengers between Tomorrowland and Fantasyland, it gives visitors a sample of European style train interiors as they travel in compartmented cars.

Monsanto Chemical Company's "House of the Future," located just off the Plaza at the entrance to Tomorrowland, demonstrates the uses of plastics in home construction and incorporates many advanced ideas and developments in home building and furnishing for comfort. Disneyland guests are invited by Monsanto to come in and look over this ultra-modern, push-button home at no charge.

One of Disneyland's most popular attractions—the Autopia Freeway, which has provided many youngsters with their first opportunity to drive a real gasoline powered automobile—has been completely re-designed, and is now capable of handling many more drivers, both young and old.

Extensive changes and additions have also been incorporated into another of Disneyland's favorites, the Jungle Boat Cruise in Adventureland.

Adding still further charm to this tropical wonder world of nature's own design, the banks of Adventureland's river are now lined with hundreds of brightly flowering

(Continued on page 14)

Ride The

METRO COACH

To Disneyland

Fast, comfortable Metro coaches take you direct to the Disneyland main entrance. Frequent service in both directions permits you to time your day as you choose. Many expresses run from the Metro Depot at 6th and Main Street, Los Angeles. Direct service also available from East Los Angeles, Downey, Santa Fe Springs, Norwalk, Buena Park, Fullerton, Anaheim, Orange and Santa Ana. Connecting service for Montebello, Whittier, La Habra, Brea, Long Beach, Pasadena and Riverside.

METROPOLITAN COACH LINES

610 S Main, L.A., TRinity 7731

TINKER BELL'S



Enchanted WAND

GLOWS IN THE DARK FOR HOURS!

A fascinating gift for any youngster. Tinker Bell's star mounted on wand gives off lovely mysterious glow!

Send Only 25c plus 5c tax & postage. See our Black Light Hall of Enchantment. Brilliant, Breathtaking, Beautiful!

MINERAL HALL • Frontierland, Disneyland, California

© Walt Disney Productions

What to See in Southern California

Diversification—keynoted by an abundance of places to visit and interesting activities for the visitor—has long been the trademark of the Southern California area.

Radiating from Los Angeles, the entertainment and cultural center of the Southland, are a myriad of things to do and see, wonders both man-made and natural.

As is the case with most of the attractions in Southern California, Disneyland—which since its opening in mid-Summer of 1955 has been the number one favorite of visitors to the area—is easily accessible from all over the Southland by the criss-crossing network of freeways.

Freeways and other fine roads will take you to the Newport-Balboa area for sailing and yachting; to Chinatown and Olvera Street, a glimpse of old Spanish California in downtown Los Angeles; or to Long Beach for an ocean cruise around Los Angeles' busy harbor.

Year around, vacationers go to see Gainsborough's "Blue Boy" and other famous paintings at Pasadena's Huntington Library and Art Gallery; to the Farmers Market in Los Angeles, diversified shopping and dining location; and the West's largest zoo in San Diego.

Summer is an especially "choice" time in Southern Cali-



Typical outdoor recreation in Southern California is furnished by the golf course at Apple Valley.

fornia. In the world famous Hollywood Bowl, "Symphonies Under the Stars" are a nighttime favorite. The Greek Theatre in Griffith Park presents outdoor stage shows, ballets and musicals. And down the coast at picturesque Laguna, the townspeople perform in "live action" the pageants of the masters in the famed "Festival of Arts."

The motion picture industry, radio and television centers, smart shops and stores along Wilshire Boulevard's "Miracle Mile," renowned Hollywood Boulevard and Beverly Hills—all are part of the area's continuous "show."

And there are other attractions: Glendale's Forest Lawn Cemetery, famed for its statuary, stained glass windows, and huge paintings; Palos Verdes' Marineland of the Pacific, world's largest Oceanarium; Buena Park's Knott's Berry Farm and Ghost Town; and Santa's Village, near Lake Arrowhead.

Much of Southern California's charm has been inherited from nature. Always popular are the swimming, surfing and deep sea fishing supplied by the blue Pacific Ocean; and beautiful desert scenery and climate which have given rise to resorts at Palm Springs and Apple Valley.

From Santa Barbara on the North to San Diego on the South, the region is dotted with historical landmarks. Most famous are the missions, such as San Juan Capistrano and San Fernando, built by the Spanish Jesuit fathers and conquistadors.

Southern California is all of these and much more—a diversified and sun-filled vacation adventure.



AUNT JEMIMA'S OLD SOUTH KITCHEN IN FRONTIERLAND

Pancake and Waffle Specialties

DAVEY CROCKETT'S DELIGHT	45c
(Four Light and Tender Aunt Jemima Pancakes)	
GOLDEN HORSESHOE SPECIAL	45c
(New Deluxe Aunt Jemima Buttermilk Pancakes)	
MARK TWAIN SPECIAL	45c
(Four Tangy Aunt Jemima Buckwheat Cakes)	
LUSCIOUS NATIVE BLUEBERRY PANCAKES	60c
FRESH PICKED STRAWBERRIES CRUSHED AND HEAPED ON GOLDEN AUNT JEMIMA PANCAKES	60c
WILD MOUNTAIN BLACKBERRY PANCAKES	60c
SLUE FOOT SUE'S FAVORITE	45c
(Creamy Egg Rich Aunt Jemima Waffles)	
FRESH CALIFORNIA PECAN WAFFLE	60c
CREAMY-RICH AUNT JEMIMA WAFFLE A-LA-MODE	85c
APPLE PANCAKE ROLL-UPS	70c
(Luscious Apple Slices rolled in Aunt Jemima's a-la-mode)	

FRESH CREAMERY BUTTER

(Cold Fresh Milk 15c, Steaming Homemade Coffee, 10c)

Maple and Wild Berry Syrups featured



LUXURIOUS 7-passenger limousines for private sightseeing... your liveried chauffeur is an experienced guide. Special Disneyland itinerary can be custom-planned for your party. See your travel agent or write

TANNER & GRAY LINE
Motor Tours • 1207 W. 3rd St.
Los Angeles 17, Calif.
Mutual 3111

Disneyland has become a land of enchantment for people the world over. Representative of every walk of life, age and interest, visitors have come to Anaheim from each state in this country and from more than 70 foreign nations. Pictured on this page are but a few of these guests, enjoying Disneyland's diversified attractions with their families.



Airborne with Dumbo are Mrs. B. J. Yarbrough and her son Johnny, residents of Sun Valley in Northern California.



Mr. and Mrs. M. C. Rutherford of Quincy, Wash. take the Mad Tea Party whirl with daughters Debra and Patty.



Family fun at Disneyland is typified by the Jimmy Stewarts, aboard a horse-drawn trolley on Main Street.



First fishing lesson for two-year old Michael Parmalee of Compton, Calif. is given by his father from a dock on Tom Sawyer Island.

RED WAGON RESTAURANT



Authentic Gay 90's Atmosphere

Gay memories become glamorous realities at the air conditioned Red Wagon Restaurant. Featuring sizzling steaks and juicy chops. Complete dinners from \$1.65; luncheon from \$1.50; children's dinners from \$1. Tempting thought: Swift's fine foods are served exclusively in Disneyland.

ON THE PLAZA



COOL-OSSAL *Summer Vacations* AT **APPLE VALLEY INN**

Summer fun on the high desert, where the average mean temperature is just 73° and you sleep under blankets every night—where there's so much to do and so much to see.

HAVE A WEEK-DAY VACATION!

Includes:

Two full days and two glorious nights
Luxurious Accommodations
Outdoor Western Steak Fry
Sumptuous Buffet Dinner
Complimentary Social Hour
Dancing and Entertainment
Tennis, swimming and other outdoor entertainment privileges.

ARRIVE ANY MONDAY OR WEDNESDAY

Enjoy 2 full days and 2 full nights of cool-ossal summer fun

JUST

\$19⁰⁰

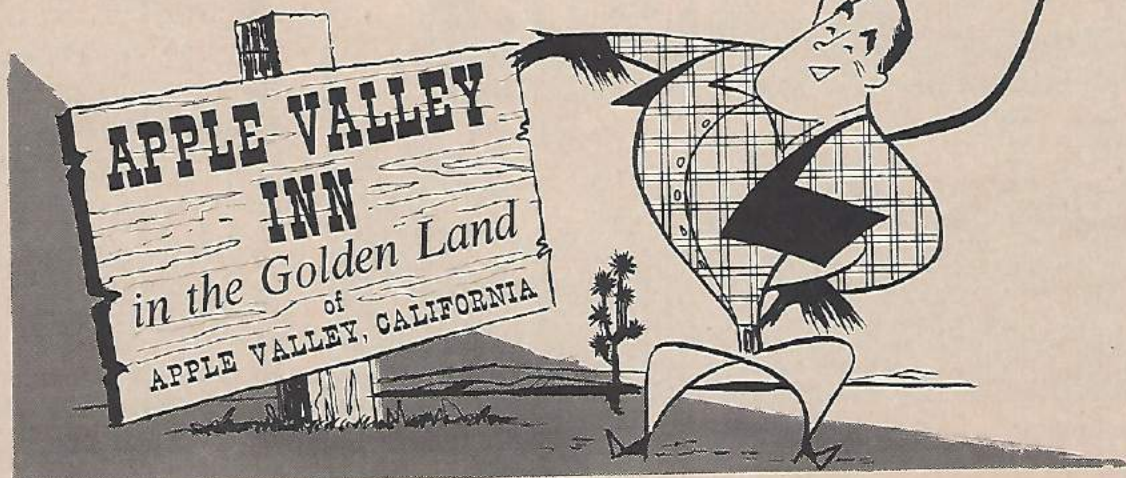
PER PERSON
DOUBLE OCCUPANCY

*For reservations
contact our Apple Valley Inn Offices:*

Los Angeles	Stanley 7-1678
Hollywood	HOLlywood 2-0978
Encino	STate 9-8173
San Marino	SYcamore 6-1488
Westchester	ORegon 8-9984
Riverside	OVERland 3-8771
Long Beach	GArfield 7-0989
San Diego	ATwater 1-5536
Disneyland-Santa Ana	JEfferson 1-2933

or call direct:

APPLE VALLEY 7-7271 • Teletype Victorville Cal 8788



Variety Keynotes

A Day at the Magic Kingdom

Hop aboard the horse-drawn trolley (or if you prefer a surrey, a double-decked bus, a "horseless carriage" or fire wagon) and let's begin a tour through Disneyland with a jaunt down 1900 Main Street.

To our right as we leave Town Square is the Santa Fe and Disneyland Railroad Station, where passenger and freight trains depart for a trip around Disneyland. Facing the square are a bank, in actual operation, and real estate and newspaper offices, while across the way are the City Hall and police station, similar to many small towns of 60 years ago.

Main Street is a beehive of activity. As our sturdy horse draws the trolley along, we see stores and shops lining each side of the street. Each displays its particular merchandise: pianos, records, art supplies, china, glassware, pastries, toys and novelties, greeting cards—all the component shops of small town America at the turn of the century.

Silent Films Still Popular

There's also the Main Street Cinema, where Rudolph Valentino and the Keystone Kops still star in the classics of the silent film era. And exhibits: a 19th century meat market and drug store, creative glassblowing and silhouette artists.

At the end of Main Street is the Plaza, center of Disneyland, where the entrances to each of the lands connect.

We leave our trolley here to proceed into Tomorrowland, dream world of the future. Here we board a rocket ship for a simulated moon journey; drive small Autopia cars over a "freeway of the future"; pilot our own Astrojet; and cruise on futuristic speedboats.

In Tomorrowland we marvel at Circarama, a motion picture screen that actually surrounds us. We view America from Space Station X-1, 500 miles out in space. And we see exhibits of the uses of chemistry, aluminum, futuristic dairy-ing and a "House of the Future."

Fantasyland—Storybook Realm

From Tomorrowland, we board the Skyway's gondola-like cars for an aerial journey to Fantasyland, while a panorama of all Disneyland spreads out below us.

Fantasyland is the world of imagination and storybook classics come to life. We experience the adventures of Snow White in the diamond mine of the Seven Dwarfs; board the Casey Jr. train; spin in the cups and saucers of the Mad Tea Party; fly with Dumbo, the elephant with aerodynamic ears; climb aboard the stately steeds of the King Arthur Carousel; view 3-dimensional color movies at the Mickey Mouse Theatre; or walk through Sleeping Beauty's Castle.

From Fantasyland it is only a few paces to Frontierland, realm of the Western pioneer and settler.

Here we cross picturesque Rainbow Desert on a stage-

coach, Conestoga Wagon or mule pack; or depart from the mining town of Rainbow Ridge for a train journey across the desert and into breathtaking Rainbow Caverns, where multi-colored waterfalls rush and stalactites and stalagmites form beautiful patterns.

On the Rivers of America we cruise on the Mark Twain sternwheeler, travel in keelboats and Indian war canoes. We seek adventure on Tom Sawyer Island, with its Fort Wilderness, Injun Joe's Cave, mysterious rock formations and tree house. We pause to listen to the Disneyland Band concert in Magnolia Park, and to see an old-West stage show starring Donald Novis, Wally Boag and Betty Taylor in Pepsi-Cola's Golden Horseshoe.

Then it's off to Adventureland, the realm of nature and the mysterious tropics. An explorer's launch takes us down mysterious rivers to encounter jungle animals and see beautiful tropical plants and flowers. And when we return to civilization, we'll want to browse through the Bazaar, with its native curios and imported items from all over the world: from China and Japan, the Fiji Islands and Africa, Central and South America.

Back again on Main Street, our diary for the day will reveal that we've been back into history, travelled far into the future, visited the world of imagination and dreams, and explored a jungle wonder world: all in a day's visit to Disneyland.

Southern

Fried Chicken

Enjoy a tempting **tender-grown** SWIFT'S PREMIUM CHICKEN DINNER amid the delightful French provincial decor of the PLANTATION HOUSE. Complete fried chicken dinners \$1.65, children \$1. Real Southern Hospitality at . . .



PLANTATION HOUSE

Across the bridge on the river front in Frontierland Swift's Fine Foods are served exclusively in Disneyland.

Really See
Disneyland
via
GUIDED TOURS!

Visit Disneyland via luxury Tanner Gray Line coach, with experienced guide to point out sights. . . Reasonable rates for half-day and all-day tours include transportation and sightseeing. See your travel agent, or ask at hotel desk.

TANNER GRAY LINE
Motor Tours
1207 W. 3rd St., Los Angeles 17
Mutual 3111

A FEW PICTORIAL SCENES OF YOUR T



The Sleeping Beauty Castle marks the entrance to Fantasyland, happiest land of them all.



Playing concerts around the Town Square flagpole or marching down Main Street, The Disneyland Band entertains Magic Kingdom visitors.



Frontierland's bustling river provides fun-filled cruises on the riverboat Mark Twain, keelboats, rafts and Indian war canoes. The log rafts travel to Tom Sawyer Island.



Tomorrowland, the world of the future, blueprint of things to come in the world of 1987.



Main Street's policeman, dressed in 1900 uniform, points out some of the attractions of the turn-of-the-century town.



A giraffe gazes quizzically at the Adventureland explorer's boat carrying passengers on an exciting cruise over jungle rivers, where thrilling adventures lurk at every bend.

TOUR THROUGH THE MAGIC KINGDOM



Fun for the young at heart of all ages in Fantasyland, where flying Dumbos are just part of this exciting adventure in the realm of storybook classics.



Old Nellie pulls a streetcar down Main Street just as her forebears once hauled passengers on main streets of 1890.



A stagecoach wheels across Rainbow Desert, reliving Frontier days of hardy Western pioneers.



The exotic atmosphere of the tropics, the Orient, Africa and Latin America is the setting for curio shopping at the Adventureland Bazaar.



The Santa Fe and Disneyland passenger train is boarded at the Main Street Station for its trip around Disneyland.



A light and gay free stage show with can-can girls, singers and comedy stars is featured at Pepsi-Cola's Golden Horseshoe Revue in Frontierland.

HIGHLIGHT YOUR TRIP TO SOUTHERN CALIFORNIA

This exact reproduction of Michelangelo's colossal statue of "David" towers more than 20 feet above those who view it.



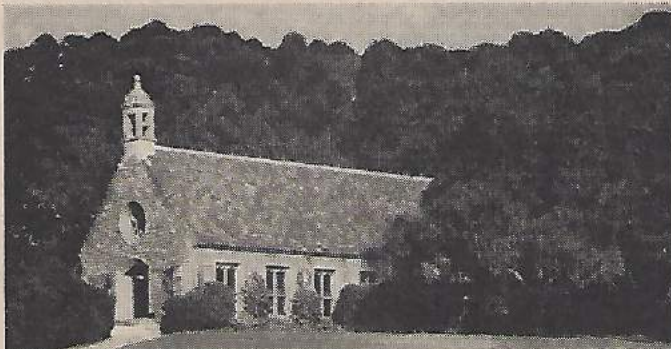
Visit FOREST LAWN

Forest Lawn is one of the West's greatest tourist attractions, the World's finest Memorial-Park and an internationally famous art center. It encompasses over 300 acres. Each year more than 1,500,000 sight seekers thrill to its living beauty—to the romance of this Park where over 43,000 people have been married in its three old-world churches. On display here are over 1100 masterpieces of painting, sculpture, and stained glass—including all the great works of Michelangelo. Forest Lawn is a park so beautiful that it has been described as, "a bit above the level of this world—a first step up toward Heaven."

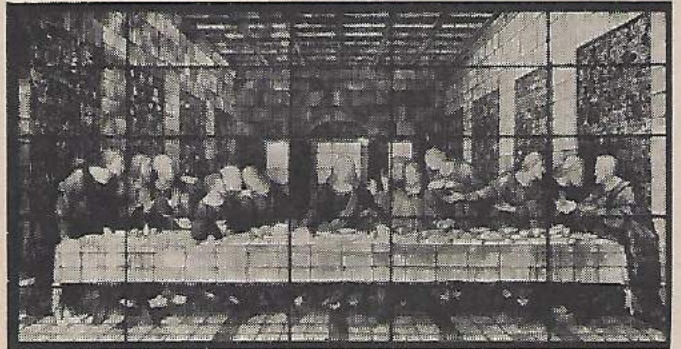
Shown here are a few of the points of interest you'll want to see when you visit Forest Lawn Memorial-Park.



Central section of "The Crucifixion," America's largest religious painting—45-feet in height, 195-feet in length. Shown on the hour from 10 AM to 5 PM.



The charm of the Scottish kirk, where Annie Laurie worshipped, is preserved in the Wee Kirk 'o the Heather Church, an exact reproduction of the original.



"The Last Supper" in stained glass is an unforgettable "must" for everyone who visits Forest Lawn. Shown hourly (except noon) from 9 AM to 5 PM.

OPEN DAILY FROM 8:30 AM TO 5:30 PM

FOREST LAWN Memorial-Park

1712 South Glendale Avenue, Glendale, California

Copyright 1957, Forest Lawn Memorial-Park Assn.

DISNEYLAND HOLIDAY

Nighttime Spectacle— "Fantasy in the Sky"

"Fantasy in the Sky," a colorful, thrilling aerial fireworks display, is the highlight of a newly inaugurated nighttime "spectacular" which is taking place this Summer at Disneyland.

Each evening beginning at 9:00 P.M., the multi-colored display bursts into the air to form a cascading shower of color over Disneyland's four "lands" and Main Street.

The exciting "Fantasy in the Sky" show is but one of many new features taking place during the evening hours this Summer at Disneyland. On Friday and Saturday nights,



A colorful aerial burst explodes over Fantasyland's Castle as visitors on Main Street watch "Fantasy in the Sky."

music will fill the air as well while the Magic Kingdom remains open until midnight for the enjoyment of guests.

In addition to these special evening features, all of Disneyland's attractions, exhibits and shows may be enjoyed by nighttime visitors. Regular admission prices, as detailed on Page 16 of this magazine, will prevail.

"Fantasy in the Sky" takes place each night beginning June 14 and continuing until September 7. Disneyland will be open Friday and Saturday evenings until midnight during this same period.

REALLY SEE
Disneyland
via **Avis**
RENT-A
CAR!

A new Ford or other fine car will meet you at airport or depot, or be delivered to your hotel in minutes. Drive it, then dismiss at destination, no extra charge. Let your travel or ticket agent make arrangements!

AVIS TANNER GRAY LINE
1207 W. 3rd St., Los Angeles 17
Mutual 3111

DISNEYLAND HOLIDAY

THEY'RE MUSTS AT TOMORROWLAND!

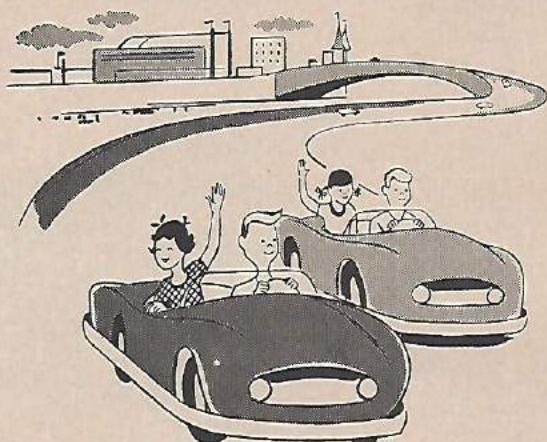


RICHFIELD'S FREE SHOW

"The World Beneath Us"

See the explosive birth of our planet...the appearance of life on earth...age of mastodons...evolution of man...interplay of underground forces.

Wide screen, full color Cinemascope
by Walt Disney



RIDE RICHFIELD'S

Fabulous Autopia

Model Freeway of the Future, with cars the youngsters can safely drive. Thrills galore.

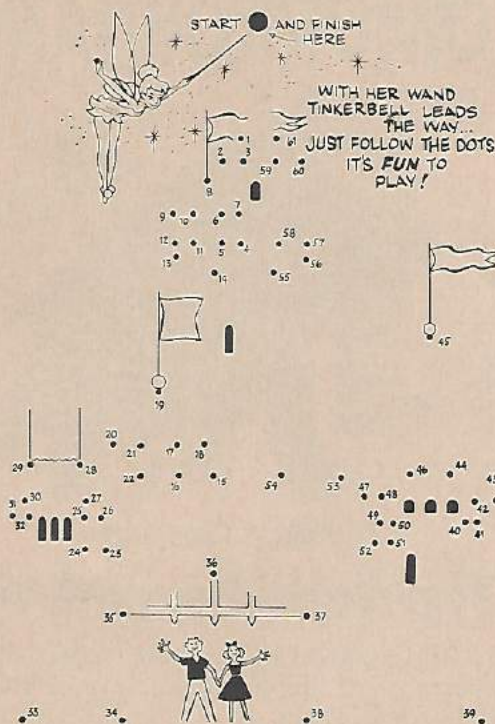
On your way back from Disneyland
stop for a tankful of

RICHFIELD

THE OFFICIAL GASOLINE OF **Disneyland**

© 1957 W. D. P.

Puzzles for the Young Traveller



4	7	14	9	5	16	8	2	9	4		
15	6	5	6	2	11	11	7	5	14	15	
11	8	2	3	5	10	9	5	2	12	15	6

Directions:

First, write the name of each Disneyland ride in the spaces provided below. Notice that all the letters are numbered. Place the letters in the corresponding boxes above and you can decipher the hidden message . . . a secret promise of fun that awaits you soon!

MR. TOAD
15 10 2 4

SNOW
0 6 7 15 5

MOON
12 10 3 0 5 15

BOATS
K 5 5 8

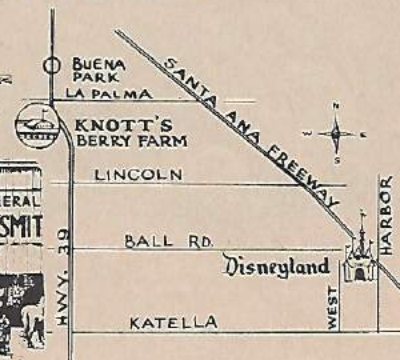
MARK
14 16 16

PAN
11 5 15 5 12

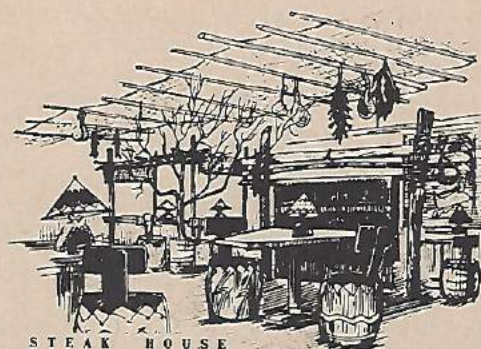
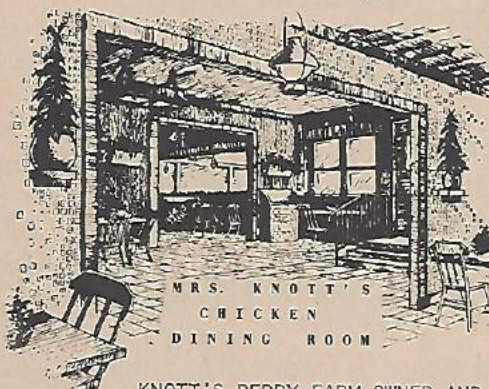
MARK
15 0 2 7 9

KNOTT'S BERRY FARM AND GHOST TOWN

A MUST when visiting Southern California. Enjoy hours of fun reliving the Gold Rush days of 1849.



From our neighbors, Disneyland - Knott's Berry Farm is 6 miles.



KNOTT'S BERRY FARM OWNED AND OPERATED BY THE FOUNDERS, MR. AND MRS. WALTER KNOTT AND FAMILY

Frontierland's Indian Village

One of the founding principles upon which Disneyland was designed was the preservation of our American heritage.

This principle may be seen in many of the free shows and exhibits in each of Disneyland's realms—and one of the most popular among many free performances is the preservation of Indian traditions and customs in Frontierland's Indian Village.

Built on the banks of the Rivers of America, the Plains Indian settlement is authentic in every detail. Animal hide tepees, a birch bark "long house," spears and other implements and especially the population of real Indians take visitors into a world which has disappeared from the American scene.

Highlight of a visit to the village is the performance of ceremonial dances by the representatives of 16 tribes.

With bright feathers and beads decorating their colorful headdresses, moccasins and other articles of clothing, the Indians perform such generations old ceremonies as the Friendship Dance, Indian symbol of welcome to visiting tribes; the Scout Dance, oldest Indian dance, keynoted by freedom of expression; the Horse Tail, Eagle, Buffalo and Warrior Shield dances.

All have specific meanings for the Indians—messages that are related to visitors by Chief Shooting Star, a Sioux, while Lee High Sky (Shawnee), Little Arrow (Winnabago), Eddie Little Sky (Sioux) and other representatives of America's true natives perform.



Traditional tribal dances take place in a free show at Frontierland's Indian Village.

Nearby, as the sound of Indian chants and drums carry through the settlement from the Ceremonial Dancing Circle, Indian war canoes glide away from shore for a trip around the Rivers of America. Paddled by guests themselves, the canoes are guided on these journeys by Indian braves, skilled in the handling of their craft.

Among the tribes represented in Frontierland are Apache, Shawnee, Winnabago, Hopi, Navajo, Maricopa, Choctaw, Comanche, Pima, Crow and Pawnee.

Hey kids! HERE'S A BANG-UP IDEA! A new frosting Mom can use to sweeten up any meal of the day!



Betcha never tasted a frosting this good, so ask Mom to make a batch (the recipe's on every box of Spreckels Powdered Sugar).

Tell Mom it's gotta be made with brand-new Spreckels Powdered Sugar because it's so fluffy. And when Spreckels frosting's in your refrigerator, you can eat it new ways like this...

- Toast topped with Spreckels Quick 'N Easy Frosting (tastes swell after school!)
- Spreckels frosting instead of syrup on pancakes or waffles (makes the best breakfast ever!)
- Spreckels new frosting's extra-special on cakes, too!

And when Mom shops for Spreckels Powdered Sugar, remind her about the extra-thrifty 2, 5, 10 and 25-pound bags of Spreckels Granulated Sugar.



Disneyland uses Spreckels Sugar Exclusively

... why not use it at your house, too!

Storybook Land— Miniature Kingdom

Monstro the Whale, once the terror of the deep in the story of "Pinocchio," has acquired a new and vastly different role at Disneyland—that of a friendly "host" to one of the Magic Kingdom's favorite attractions, Storybook Land.

After boarding one of the gaily colored, picturesque European canal boats in Fantasyland, visitors are whisked through the wide open mouth of Monstro and into the delightful Lilliputian world of storybook classics.

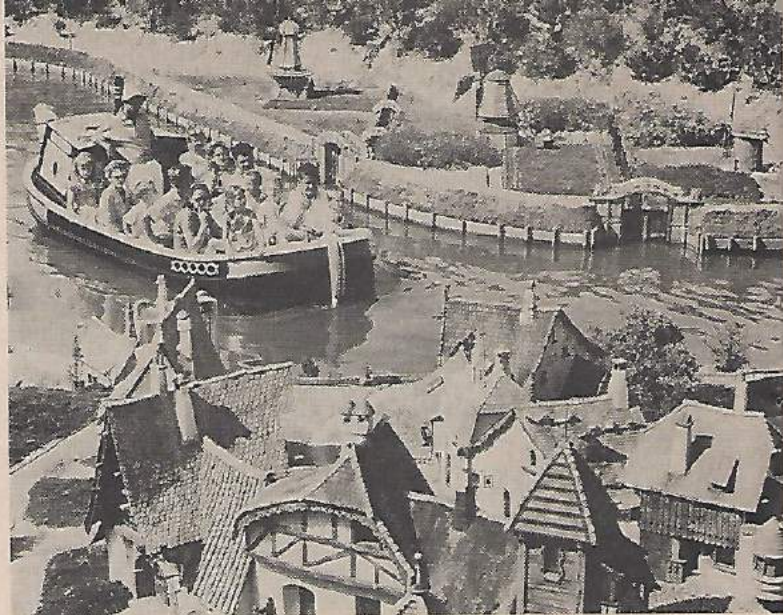
In Storybook Land familiar landmarks from tales that have delighted generations of people the world over are displayed in a way never before seen. It is one of Disneyland's finest examples of the Disney magic in artistry and creating exciting and entertaining attractions.

Storybook Land is a kingdom in miniature—scene after scene of painstakingly detailed settings—life-like re-creations of villages, castles, houses and other buildings from the pages of fabled stories.

The charmingly designed canal boats are piloted through these exciting adventures by a guide who briefly tells the story of the scenes visitors see along the canal banks.

The banks of the Storybook Land canal are lined with such familiar scale-sized buildings as Geppetto's Village, high amidst the snow covered Swiss Alps; the straw, stick and brick houses of the Three Little Pigs; Kensington Gardens from the story of Peter Pan; Ratty's waterfront dwelling and Mr. Toad's home in "The Wind in the Willows."

Visitors also enjoy scenic views of the Crazy Quilt



Geppetto's Village (foreground) and Dutch windmills (background) are some of the miniature settings in Storybook Land.

Country from "Wynken, Blinken and Nod"; countryside from "Alice in Wonderland"; a Dutch landscape with sights from Walt Disney's "The Old Mill"; and the quaint cottage of the Seven Dwarfs, "Over the Seven Hills and Past the Seven Falls."

Looking down on all Storybook Land from its location high on a hill above the canal are the gilded spires of Cinderella's dream castle.

Majestically conceived lighting effects, hidden from daytime view, cast fanciful illuminations upon the detailed miniature buildings at nighttime.

Designed and constructed with the amazing attention to detail and magical creativeness that have characterized all Walt Disney endeavors, Storybook Land is further enhanced by the inclusion of the largest concentration of dwarf and miniature plants ever assembled.

New Attractions . . .

(Continued from page 3)

orchids—while water buffalo, African gazelle and antelope, birds, an army of cannibals and huge hovering butterflies gaze at the passing boats.

Intriguing new adventures have also been added to Tom Sawyer Island, accessible from Frontierland only by means of hand hewn log rafts.

From the lofty height of a tree house, entered by means of hollowed-out roots, young explorers can look through stove pipe telescopes. Or, in new rock formations, several with interior caves, they can seek safe adventures in dark passageways and dungeon-like enclosures.

These new adventures—added to the many exciting attractions which have already gained world renown for Disneyland—make a visit to Walt Disney's Magic Kingdom even more of a "must" for visitors to Southern California.

Disneyland

GOURMET RESTAURANTS

Located at The Disneyland Hotel
across from the Disneyland Auto Park exit

An enjoyable experience in an atmosphere suited to relaxed dining

BREAKFAST LUNCHEON	DINNER COCKTAILS
-----------------------	---------------------

*The ultimate in cuisine and service
Your favorite beverages expertly prepared*

Luncheon from
\$1.25

Dinners from
\$2.35

Special Children's Menus
See our Banquet Manager for Private Parties 25 - 500
Phone KEystone 5-2297
1441 So. West St., Anaheim, Calif.

Really SEE
Disneyland
on an AVIS—
**DISNEYLAND HOTEL
PACKAGE TOUR!**

Rent a fine Ford or other make, and stay at fabulous Disneyland Hotel, on special two, three and four day package tours... ask your travel agent, or write

AVIS-TANNER
GRAY LINE Motor Tours
1207 W. 3rd St., Los Angeles 17
MUtual 3111

DIARY OF OUR TRIP

Today	We Visited . . .	And We Saw . . .	We Most Enjoyed . . .	We Stayed At	We Travelled
					miles
					miles
					miles
					miles
					miles
					miles
					miles
					miles
					miles



TRAVEL REFRESHED!
HAVE A SPARKLING . . .

PEPSI-COLA[®]

When you are going places and doing things,
 enjoy Pepsi-Cola—
 the LIGHT refreshment, NEVER FILLING.



**BE SURE TO SEE PEPSI-COLA'S
 GOLDEN HORSESHOE REVUE
 PRESENTED FREE AT DISNEYLAND**



Information for Your Trip to Disneyland

Every week letters pour into Disneyland from all over the United States and many parts of the world, requesting information about Walt Disney's Magic Kingdom to help in planning vacation trips. As a service to you, DISNEYLAND HOLIDAY is presenting the following information as a guide to planning a visit to the Magic Kingdom.

Where is Disneyland located?

You will find Disneyland in Anaheim, 22 miles southeast of Los Angeles, easily reached on the freeway system by auto or public transportation. A turn off the Santa Ana Freeway onto Harbor Blvd. will take you directly to the Magic Kingdom's Main Entrance.

What hours is Disneyland open?

Disneyland is open from 9:00 a.m. to 10:00 p.m. daily, seven days a week, during the Summer months. On Friday and Saturday nights from June 14 to September 7, Disneyland is open until Midnight.

How long should we plan to stay?

According to research compiled at the Magic Kingdom, most families make a full day of their trip, staying five or more hours here. Many families find that, in order to see all of Disneyland's wonders including the shows and exhibits, a longer stay is desirable. If possible, plan your trip to Disneyland so that you can stay one or two full days.

How much will a visit to Disneyland cost?

For the most enjoyable and thriftiest way to visit Disneyland, we suggest the money-saving "Jumbo 15" or "Big 10" Ticket Book plans. The "Jumbo 15" plan offers admission and a choice of 15 attractions from a list that includes every attraction in the Magic Kingdom for a single price of \$3.00 for children, \$3.50 for juniors and \$4.00 for adults. The "Big 10" plan gives you admission and a choice of 10 attractions from the same list for \$2.00 for children, \$2.50 for juniors and \$3.00 for adults.

General admission to Disneyland for children under 12 is 50 cents; for juniors (ages 12 to 17), 70 cents; and for adults, 90 cents. General admission tickets entitle guests to admission to Disneyland's more than 15 free exhibits, shows and amusements and to visit the four "lands" and Main Street.

Does Disneyland have restaurants or food facilities?

Definitely. The Magic Kingdom offers its visitors a complete range of food and eating services. There are 18 fine restau-

rants to serve the public within Disneyland, and the Gourmet Restaurants at the Disneyland Hotel, offering everything from full course steak dinners to quick snacks and sandwiches.

Should we bring our cameras?

By all means, yes. Walt Disney's Magic Kingdom is also his camera kingdom. One of Walt's major considerations in the design and construction of Disneyland was arrangement for visual—and camera—effect. To record permanently your Disneyland visit, still and motion picture cameras are always in order. Film is available at numerous locations throughout the Magic Kingdom. Taking motion pictures or other film for commercial use, exhibition or for use where admission is charged is not permitted without the written consent of Disneyland, Incorporated.

Is Disneyland served by public transportation?

Disneyland is accessible by bus and helicopter on a regular schedule every day of the week. Metropolitan Coach Lines, Tanner Gray Line Motor Tours, Pacific Greyhound Lines and Southland Bus Lines all offer bus service from various Southern California points to the Magic Kingdom. In addition, Los Angeles Airways operates daily helicopter flights to Disneyland's own Heliport. Consult the individual companies for information and time schedules.

Where can I get further information about Disneyland?

For information on anything not covered here, write or phone: Director of Customer Relations, Disneyland, Anaheim, California.

Vol. 1—No. 2

Summer 1957

DISNEYLAND HOLIDAY

Honorary Editor-in-Chief.....Walt Disney

Editor.....Martin A. Sklar

Advertising Manager.....Jack Lindquist

Advertising information from Jack Lindquist, Disneyland.

Circulation: 400,000 this issue.

All rights reserved. Reprint of material only upon written request of Disneyland, Inc.

DISNEYLAND HOLIDAY is published quarterly by Disneyland, Inc.

Disneyland photos by Milt Hyman





LANCASTER

SAN FERNANDO MISSION

SAN FERNANDO

FOOTHILL BLVD

ROSE BOWL

MT. WILSON OBSERVATORY

ANT. BALDY

SANTAS VILLAGE

BERNARDINO

COLTON

ONTARIO

UPLAND

POMONA

WEST COVINA

AZUSA

PASADENA

GLENDALE

BURBANK

VAN NUYS

VENTURA

SANTA BARBARA

SANTA MONICA

WILSHIRE BLVD.

SEPULVEDA

LOS ANGELES

ALHAMBRA

ATLANTIC AVE.

ROSE MEAD BLVD.

NORWALK BLVD.

WHITTIER

BREA CANYON RD

LA HABRA

FULLERTON

CORONA

91

18

14

101

101

101

101

101

101

101

101

101

101

101

101

101

101

101

101

101

101

101

101

101

101

101

101

101

101

101

101

101

101

101

101

101

101

101

101

101

101

101

101

101

101

101

101

101

101

101

101

101

101

101

101

101

101

101

101

101

101

101

101

101

101

101

101

101

101

101

101

101

101

101

101

101

101

101

101

101

101

101

101

101

101

101

101

101

101

101

101

101

101

101

101

101

101

101

101

101

101

101

101

101

101

101

101

101

101

101

101

101

101

101

101

101

101

101

101

101

101

101

101

101

101

101

101

101

101

101

101

101

101

101

101

101

101

101

101

101

101

101

101

101

101

101

101

101

101

101

101

101

101

101

101

101

101

101

101

101

101

101

101

101

101

101

101

101

101

101

101

101

101

101

101

101

101

101

101

101

101

101

101

101

101

101

101

101

101

101

101

101

101

101

101

101

101

101

101

101

101

101

101

101

101

101

101

101

101

101

101

101

101

101

101

101

101

101

101

101

101

101

101

101

101

101

101

101

101

101

101

101

101

101

101

101

101

101

101

101

101

101

101

101

101

101

101

101

101

101

101

101

101

101

101

101

101

101

101

101

101

101

101

101

101

101

101

101

101

101

101

101

101

101

101

101

101

101

101

101

101

101

101

101

101

101

101

101

101

101

101

101

101

101

101

101

101

101

101

101

101

101

101

101