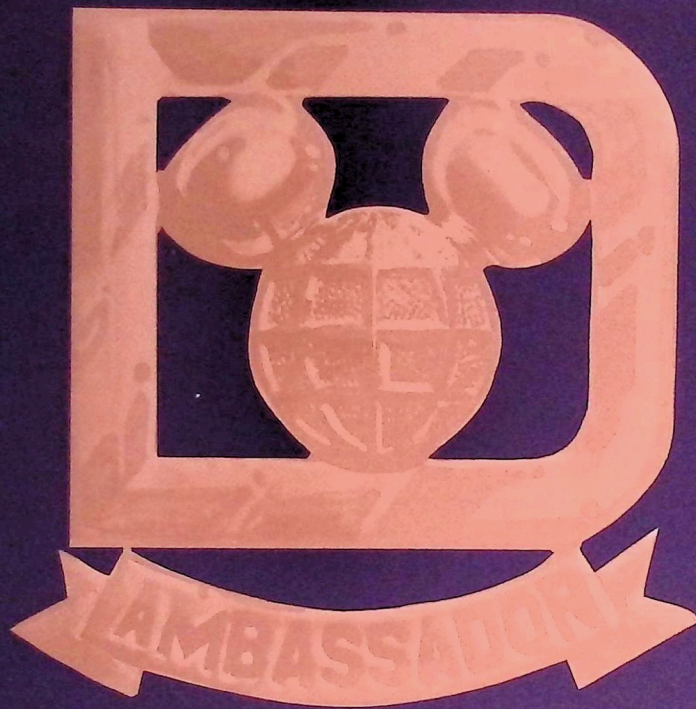


1 9 8 3  

---

WALT DISNEY WORLD



BE THE FIRST TO REPRESENT



Walt Disney World  
**EPCOT**  
CENTER



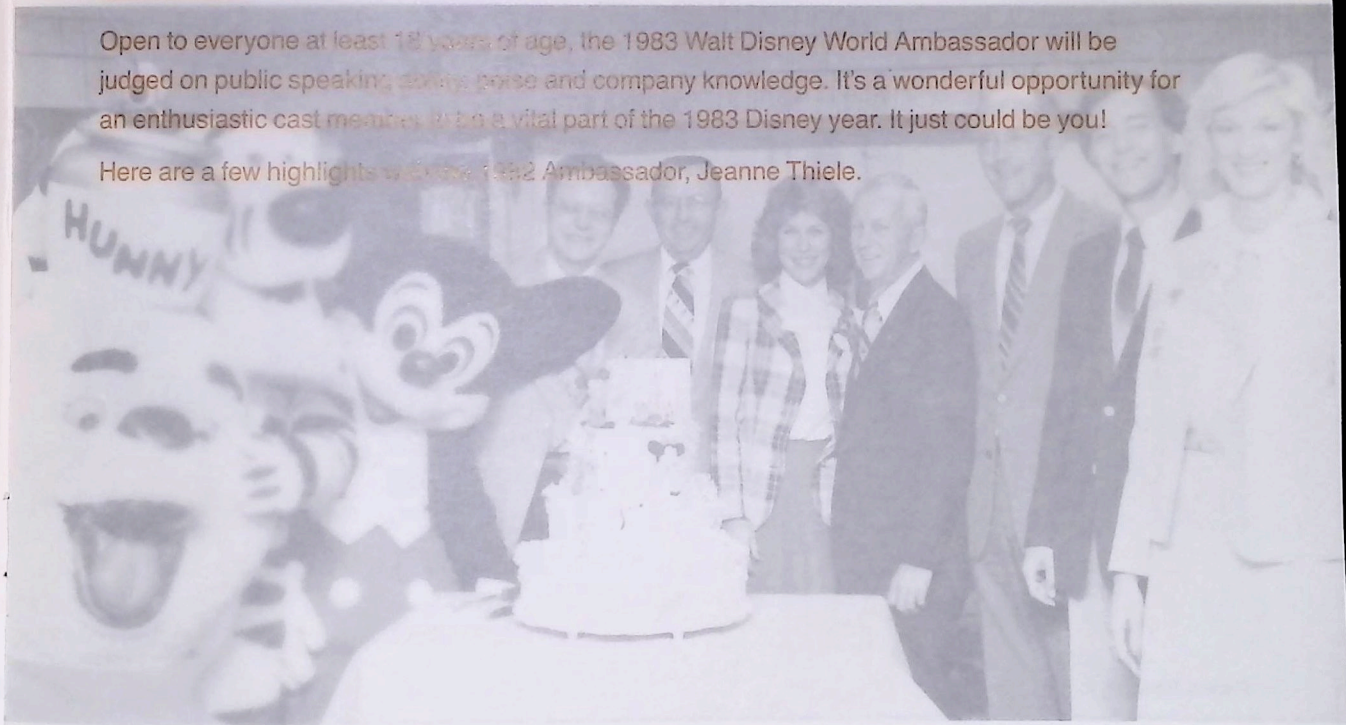
1983 promises to be the most exciting year in Disney history. And you could be in the middle of it all!

If you're chosen as the 1983 Walt Disney World Ambassador, you'll be involved in everything from making presentations to Florida area school children to meeting and greeting foreign dignitaries. You'll travel around the state and around the world. You'll carry the Walt Disney World message to people from all points of the globe eager to hear about our grand new Epcot Center.

Perhaps the most exciting event of all will be participating in Epcot Center's Grand Opening ceremonies!

Open to everyone at least 18 years of age, the 1983 Walt Disney World Ambassador will be judged on public speaking skills, grace and company knowledge. It's a wonderful opportunity for an enthusiastic cast member to be a vital part of the 1983 Disney year. It just could be you!

Here are a few highlights with the 1982 Ambassador, Jeanne Thiele.



Regional Medical Center pose with Jeanne during the hospital's playroom dedication.  
Jeanne gives a speech at an Epcot Center update.

Throughout the year, Jeanne dedicated Disney Tencennial playrooms in hospital pediatric wards. Disney characters, WED artist Don Williams, VP/Operations Bob Matheison and officials from Orlando



Regional Medical Center pose with Jeanne during the hospital's playroom dedication.

Jeanne gives a speech at an Epcot Center update.

Throughout the year, Jeanne dedicated Disney Tencennial playrooms in hospital pediatric wards. Disney characters, WED artist Don Williams, VP/Operations Bob Matheison and officials from Orlando



**Photos from left to right.**

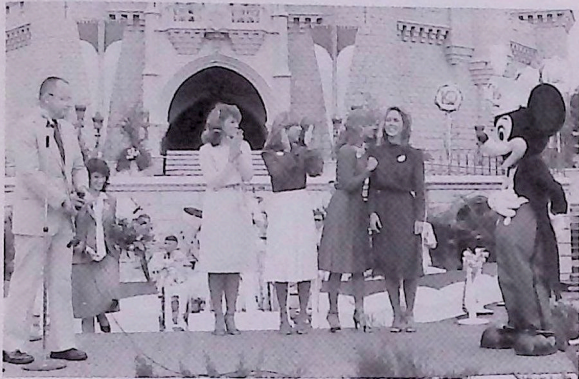
The Ambassador often gives interviews to radio and television stations.

Mickey enjoys posing with Jeanne and 1981 Ambassador, Robin Maples.

A face from the past: 1967 Disneyland Ambassador, Marcia Phillips, and her family stop by for a visit.

Jeanne hands Governor J. Joseph Garrahy a Tencennial Plate as he proclaims it Walt Disney World week in his home state of Rhode Island.

During her intensive, month-long training period, Jeanne visited with most of the Vice Presidents and Directors in Florida and California. Taking a moment from her busy schedule, Jeanne posed with the 1982 Disneyland Ambassador, Joanne Crawford and Ted Crowell, VP Facilities.

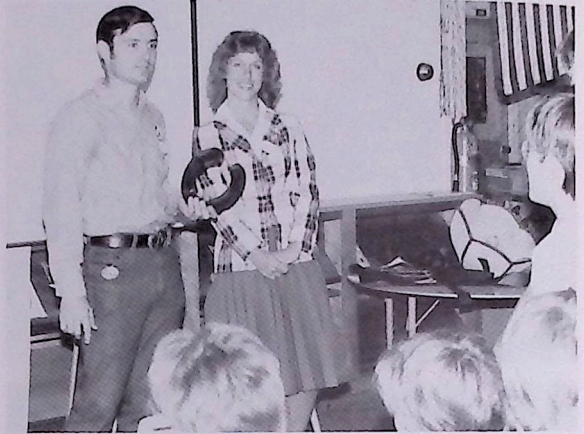
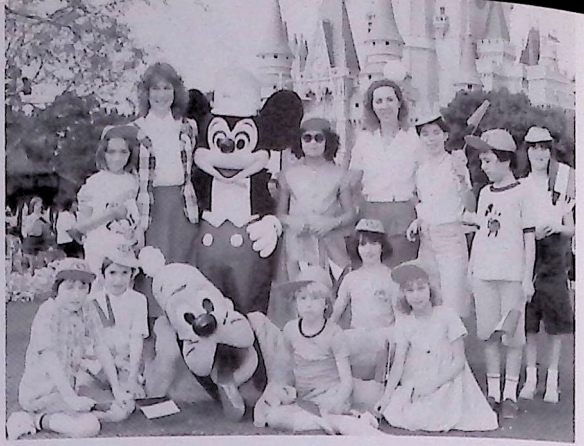


The ten 1982 semi-finalists, front row: Jackie Jernigan, Cindy Cleary, Donna Bailey, Susan Dorman, Sharon Drews. Back row: Kathie Czupka, Jeanne Thiele, Annie-Laurie Brennan, Dawn Chesko, Cindy Godwin.

... and the 1982 Walt Disney World Ambassador is Jeanne Thiele! Pictured left to right at the 1982 announcement ceremony are Bob Matheison, VP/Operations; Robin Maples, 1981 Ambassador; 1982 finalists Dawn Chesko, Sharon Drews and Cindy Godwin; Jeanne and Mickey.

Ed Moriarty, VP/Lake Buena Vista and Mickey congratulate Jeanne at the 1982 Ambassador ceremony.

Mickey takes the hand of a very happy Jeanne after she's declared the 1982 Ambassador.



**Photos from left to right.**

The Ambassador meets and greets visitors from all over the world. These folks won a contest and came all the way from France to visit our most magical of kingdoms.

Jeanne and Joanne Crawford, the 1982 Disneyland Ambassador, travel to Germany to deliver a coast-to-coast Disney invitation.

In a presentation to Florida area school children, Jeanne watches as Gary Wade explains his job as Ft. Wilderness blacksmith.

Jeanne helped host the 11th Annual Hourly/Executive Women's All-Stars Softball Classic, when she and team captains, Ron Matay and Kim Dyer, presented Keith Kambak, Director/Resort, with the coveted Jackaloup Award.



1971 Debby Dane Browne



1972 Sherry Swets Hornsby



1973 Karin Cheatham Dent



1974 Christi Zeisler Aldridge



1975 Suzi Chene



1976 Mary Ann Carter Engebretsen



1977 Debby Bennett Griswold



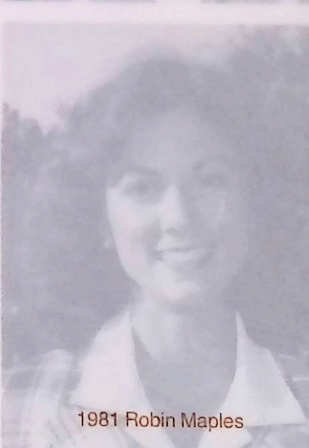
1978 Vicki Jaramillo Tarmey



1979 Pam Carpenter



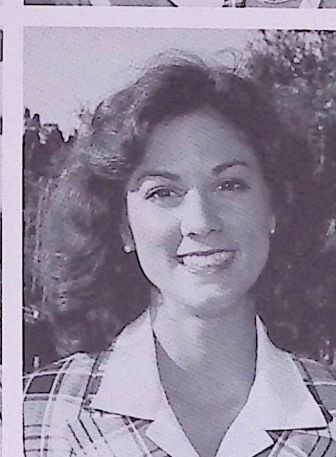
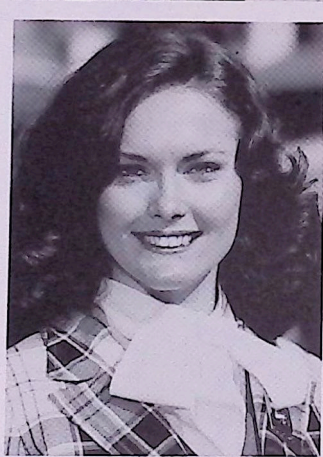
1980 Monica Hallecks



1981 Robin Maples



Former  
Walt  
Disney  
World  
Ambassadors





Walt Disney World  
© 1987 Walt Disney Productions