



the colorful world of Century 21

7617
60947

The colorful world of Century 21 unfolds before you in the pages that follow. A glittering panorama . . . America's first Space-Age World's Fair presents an unparalleled projection of life in the year 2000. From all corners of the world come the leaders of science, industry, the arts, and entertainment to share their vision of man in the space age.

Century 21 is indebted to the General Insurance Company of America for the use of their fine prints of the colorful world of Century 21. Our thanks, too, to the Washington State Department of Commerce and Economic Development for the inviting photographs of the area's scenic wonderland.

Century 21 Exposition
America's Space-Age World's Fair
Seattle, U.S.A., 1962



CENTURY 21 EXPOSITION, SEATTLE - 1962

The future . . . a world limited only by the mind of man. As a guest in Seattle you'll behold this astonishing world, starting in April, 1962. In 90 seconds a high-speed monorail will whisk you from downtown Seattle to this - the United States' first international exposition since 1939 . . . more than \$70 million and 74 acres of "things to come" from all over the world.



SAN JUAN ISLANDS

A world largely untouched . . . scores of uninhabited islands in the sun . . . rocky beaches, twisted trees — a wilderness inviting exploration during your visit to Century 21 and the Northwest.



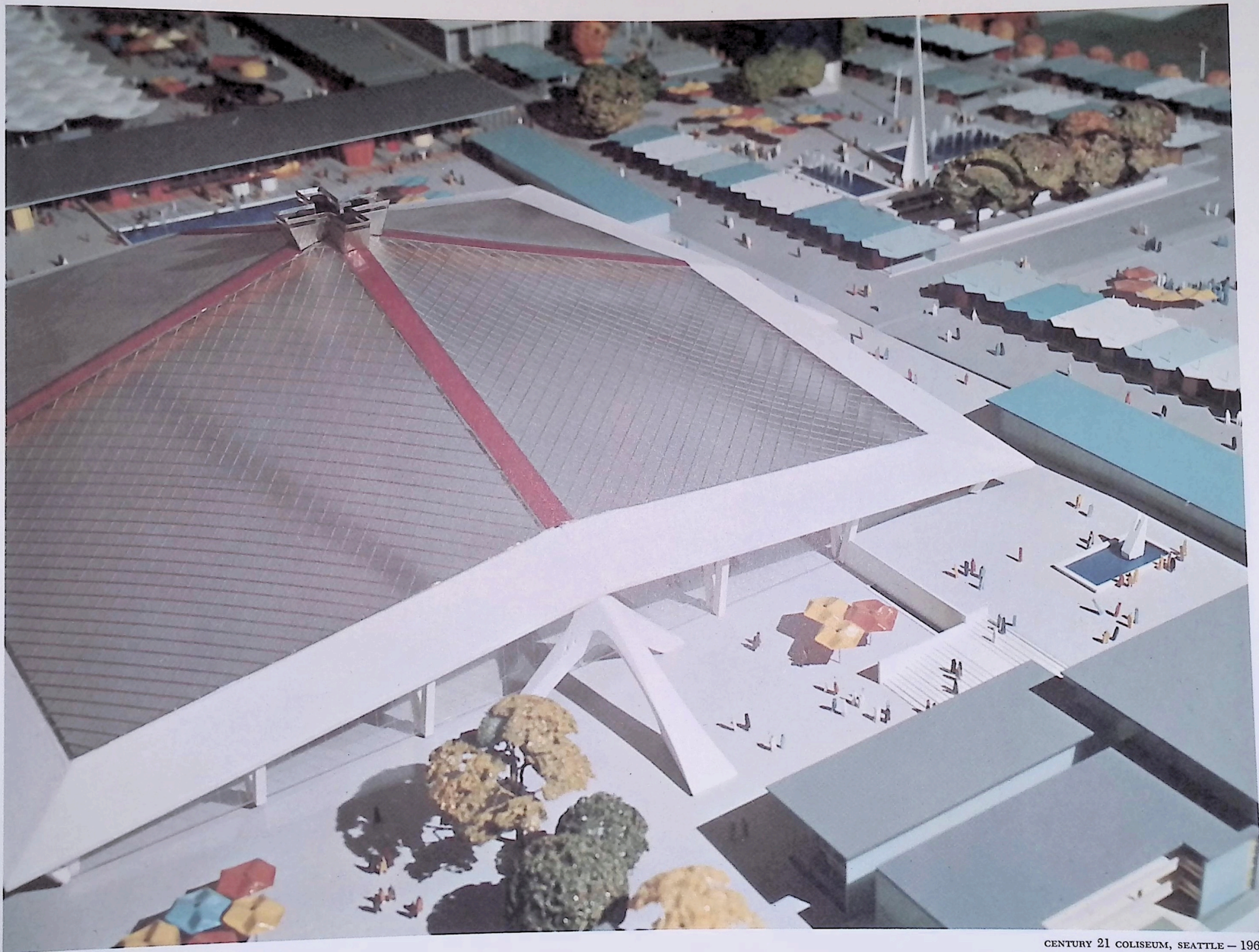
CENTURY 21 EXPOSITION, SEATTLE — 1962

Boulevards of the world . . . international crossroads . . . you'll wander to strange lands seeing the world in new perspectives. Sparkling shops, exotic restaurants, bars and bazaars steeped in the culture of countries you've always wanted to visit . . . a space-age trip around the world — it's waiting for you at Century 21.



WASHINGTON COAST

The world of the sea . . . miles of wave-swept shores . . . sweeping sands broken by rock, stream and driftwood . . . myriad patterns of land, sea, sky and shadow — an ever-changing world of beauty, accentuating your trip to Century 21.



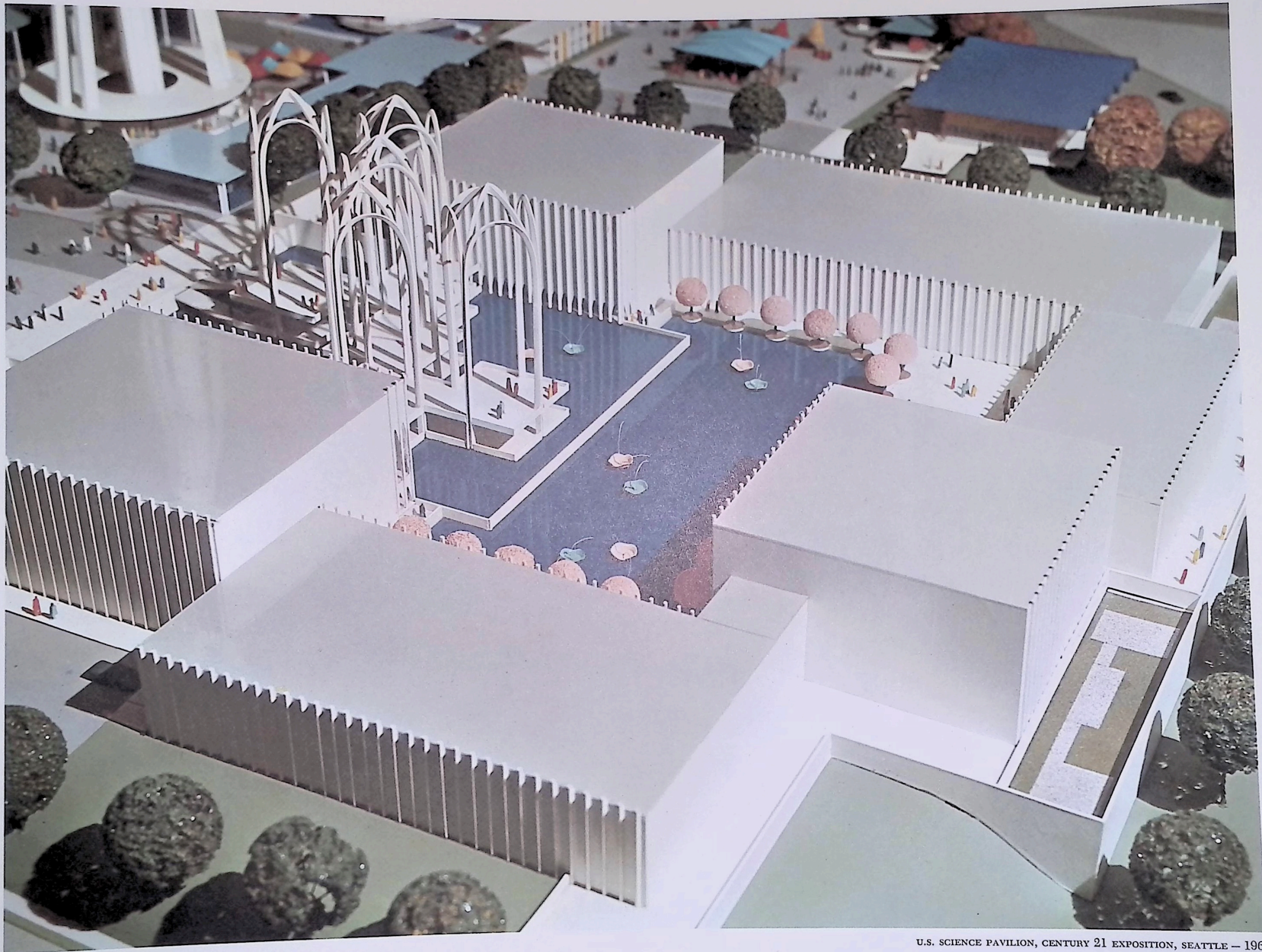
CENTURY 21 COLISEUM, SEATTLE - 1962

The world of Century 21 . . . you'll watch the way your children and grandchildren will live, work and play in the year 2000. The coliseum, alone, will be larger in size and scope than the U.S. Pavilion at the Brussels Worlds Fair. You'll walk through four acres of futuristic exhibits - full-sized models depicting offices, factories, homes and shops of tomorrow . . . all the fantastic places and products in store for you and your children.



MT. RAINIER FROM OHOP VALLEY, WASHINGTON

A cool, high world of mountain and glen. This majestic mountain may well dominate the view from your hotel room in downtown Seattle. Only minutes will separate you from the peace of flower-dotted meadows . . . the challenge of sky-piercing peaks . . . a challenge comparable to your future in Century 21.



U.S. SCIENCE PAVILION, CENTURY 21 EXPOSITION, SEATTLE — 1962

The world of science . . . the most advanced knowledge of the universe will unfold before your eyes . . . new concepts in time, space and matter . . . a trip through the outer planets at the speed of light . . . challenges and products of the future — a breathtaking world beckoning you to Century 21.



WHITE PASS SKI AREA

You'll discover this brisk, glistening world of alpine adventure in little more than an hour's drive from downtown Seattle. In many areas chair lifts will be operating . . . lifting you to a crisp, lofty world of scenic splendor.



CENTURY 21, SEATTLE - 1962

The world of art . . . you'll walk among spectacular fountains embodying revolutionary concepts in the movement of light and water . . . experience a fabulous array of contemporary techniques in painting, sculpture and industrial design.



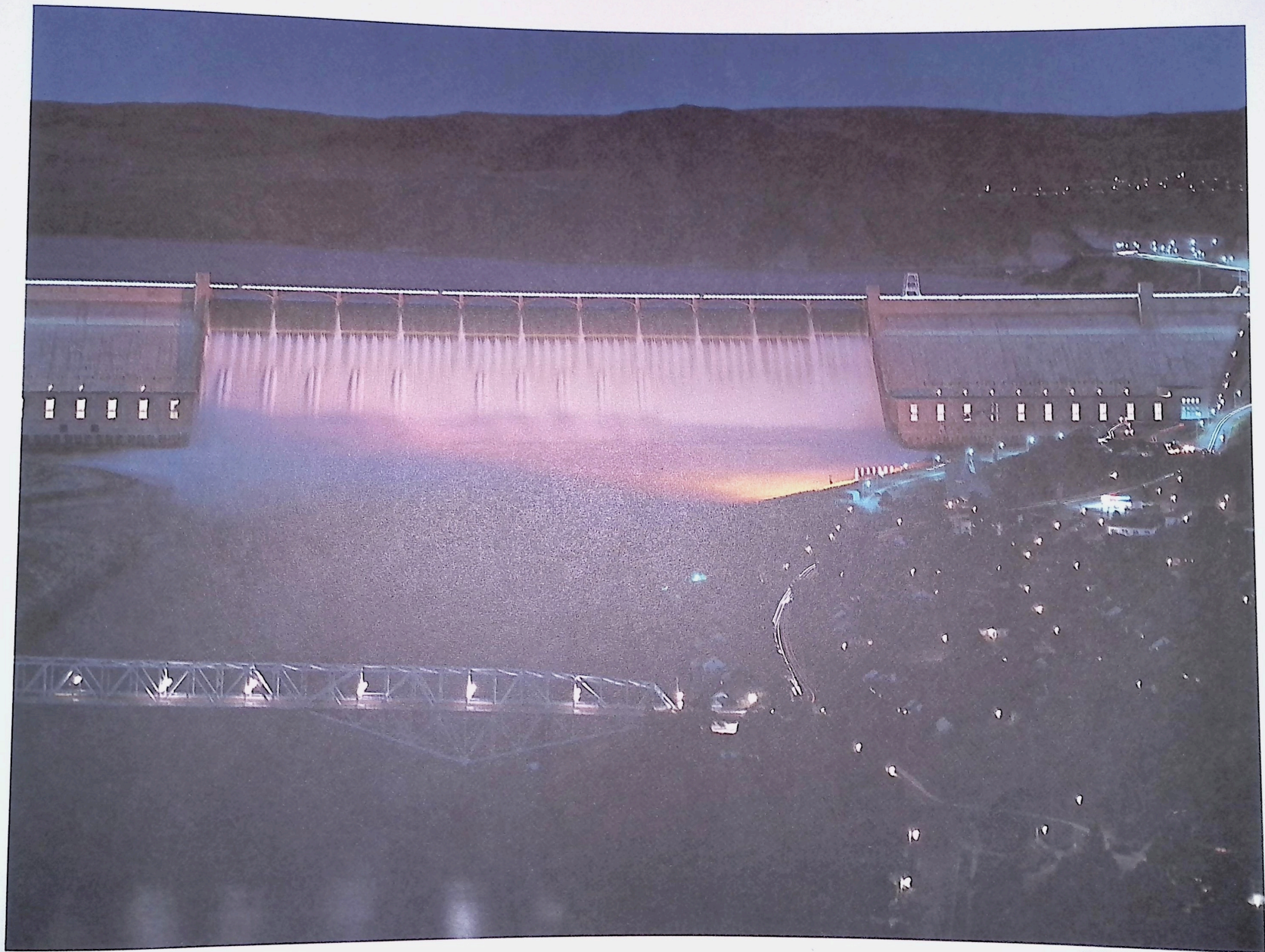
SEATTLE, WASHINGTON

Seattle . . . nestling between Puget Sound, Lake Washington and snowy mountains . . . site of Century 21 . . . gateway to Alaska and the Orient . . . a young, cosmopolitan world of industry and opportunity . . . of ships and jets . . . green lawns and boulevards.



WASHINGTON STATE HYDRO-ELECTRIC EXHIBIT, CENTURY 21, SEATTLE — 1962

The world of commerce and industry . . . a world encompassing every sector of commercial and industrial ingenuity. Here, you'll see nations from all over the world exhibiting their most advanced and startling space-age achievements.



GRAND COULEE DAM, WASHINGTON

A colossal man-made barrier . . . taming the mighty Columbia . . . transforming thousands of barren acres into lush fields of farmland. Here, in the Coulee country of Eastern Washington, you'll visit an arid world of sage brush and sand dunes . . . you'll wander through petrified forests . . . through man-made caves of concrete and steel in the heart of this great dam and watch enormous generators converting rampant waters into electrical energy.



CENTURY 21 "GAYWAY," SEATTLE - 1962

The world of entertainment . . . a gay, youthful galaxy of fun for kids of all ages. You'll witness a continuous international procession of music and dance . . . sports . . . parades and pageantry . . . and, of course, rides and amusements add a touch of yesteryear to this amazing world of the future.



EXCURSION VOYAGE — SEATTLE

Here, on sparkling Puget Sound you'll meander from bustling piers of commerce to quiet coves — still untouched by the progress of man. You'll board a sleek ferry and cruise to old-world Victoria. You'll wander through breathtaking Butchart's Gardens . . . visit famous Empress Hotel . . . stroll through colorful shops and bazaars capturing the atmosphere of old England.



CENTURY 21 SPACE TOWER, SEATTLE — 1962

The world of space will be a world of reality as you dine atop this 550-foot spire in the sky. Imagine . . . while you dine, the entire restaurant and observation platform revolves! A 360 degree panorama passing before your eyes . . . a space-age view of sparkling Puget Sound, forest-clad islands . . . canals, cool, blue lakes . . . 14,410-ft. Mt. Rainier, and skyscrapers framed by glistening mountain ranges. See it all at Century 21.