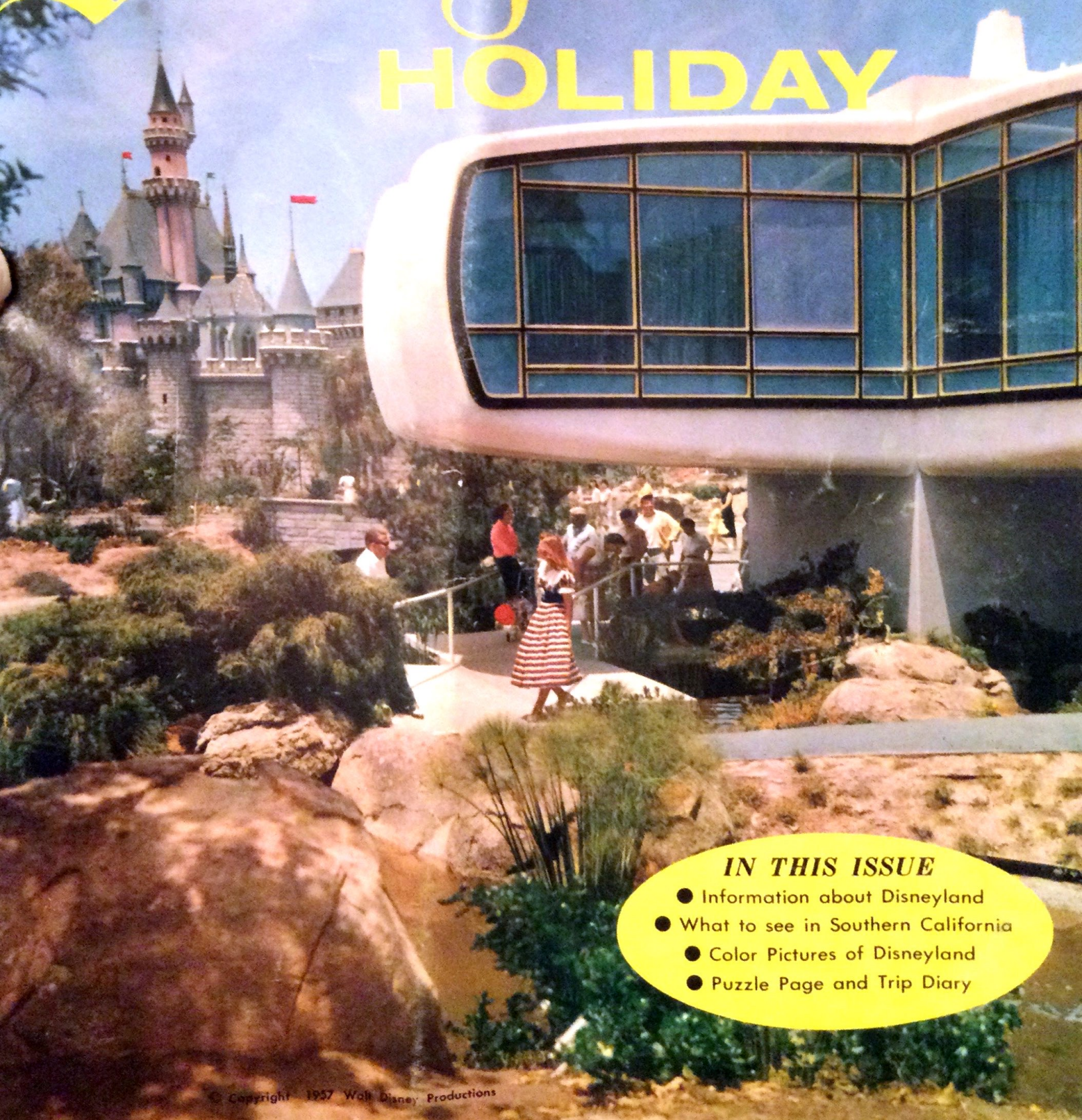


FALL, 1957

Disneyland

HOLIDAY



IN THIS ISSUE

- Information about Disneyland
- What to see in Southern California
 - Color Pictures of Disneyland
 - Puzzle Page and Trip Diary



Walt Disney and Friends

Table of Contents

	Page
What Is Disneyland?.....	1
Fun for the Entire Family.....	2
Preview of Tomorrow: House of the Future.....	3
Picture Page of Disneyland Attractions.....	4
What to See in Southern California.....	5
Variety at Disneyland Includes Many Free Attractions.....	7
Color Pictures of Disneyland.....	8 & 9
Information Center—Services for Travelers.....	11
Free Attractions (continued).....	13
Disneyland Crossword Puzzle.....	14
How to Keep a Diary of Your Trip.....	15
Information for your trip to Disneyland.....	16
<i>Maps: Main Routes to Southern California, Inside Back Cover;</i>	
<i>Main Routes to Disneyland, Back Cover.</i>	

About the Cover

"When you wish upon a star, your dreams come true" go the words to a song familiar to people of all nations. These same words aptly describe our cover subject, Monsanto's "House of the Future." A serene dream out of the world of tomorrow, this futuristic plastic home is composed, both in its exterior and interior, of years ahead innovations. Another imaginative wonder-world, the Fantasyland section of Walt Disney's Magic Kingdom, is symbolized by the Sleeping Beauty Castle, seen in the left background on the cover. (For story about the House of the Future, see Page 3 of this issue.)

Through the years, Walt Disney has given people the world over the finest in wholesome family entertainment.

Today, some of Walt's happiest moments are spent at Disneyland, watching visitors having fun and enjoying themselves, planning new attractions and additions or new areas to be developed.

For Disneyland is a dream-come-true to Walt Disney, and in this Magic Kingdom, nearly 9 million people have been his guests in only 26 months. Many have paused for a few moments at the base of Town Square's flagpole to read the following words on Disneyland's dedication plaque:

"To all who come to this happy place . . . WELCOME.

"Disneyland is your land. Here age relives fond memories of the past . . . and here youth may savor the challenge and promise of the future.

"Disneyland is dedicated to the ideals, the dreams, and the hard facts that have created America . . . with the hope that it will be a source of joy and inspiration to all the world."

WALT DISNEY

Disneyland Now Open Every Day

Good news for Fall visitors: Disneyland is now open every day, no matter what the season.

Throughout the year, the Magic Kingdom is open seven days a week. During the Fall and Winter months, Disneyland's gates open at 10:00 a.m. and close at 7:30 p.m. On holidays, the Magic Kingdom is open from 10:00 a.m. to 10:00 p.m.

* * *

On Page 5 of this issue, you will find a special listing of things to do and places to see in Southern California. This list is a service from DISNEYLAND HOLIDAY to aid visitors in selecting what to do while in the Southland. We hope you find our capsule summaries helpful in planning your stay in Southern California, America's favorite vacationland.

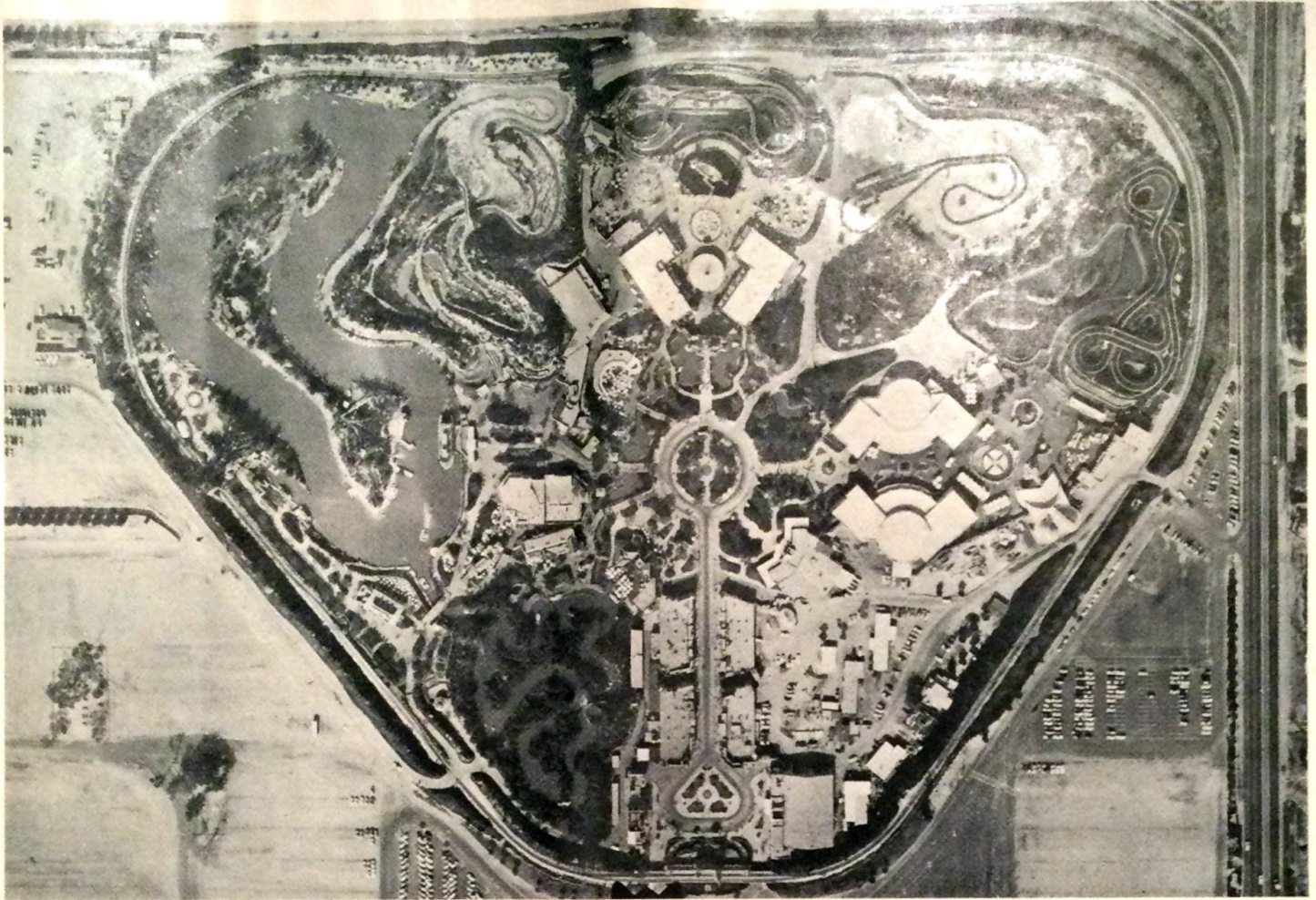
* * *

With the end of Summer and the beginning of school, there is more room for more fun at Walt Disney's Magic Kingdom. Many special features, highlighted by the Third Annual Christmas Festival from Dec. 16 through Jan. 5, will be taking place at Disneyland during the Fall season.

Disneyland has continuously added new attractions, exhibits, shows and services, so that there are always new adventures in entertainment at Walt Disney's Magic Kingdom, no matter what time of year or whether you're visiting Disneyland for the first, second or tenth time.

That's why we say, you haven't really seen Southern California until you've visited Disneyland.

The Editors.



From the heights of a lofty helicopter, Disneyland's 60 acres of fun-filled attractions are seen far below.

What Is Disneyland?

An entirely new concept in family entertainment awaits visitors at Disneyland.

From the moment you enter its nostalgic Main Street of early America, you are transported out of the world of today into a realm where time seems to stand still, where memories of the past and dreams of the future combine to ensure a day in your life that will never be forgotten.

Disneyland is built on 60 acres of former orange and walnut groves and is divided into four "lands" and Main Street, the heartline of 1900 America.

These "lands," all radiating from the Plaza at the end of Main Street, are Tomorrowland, where man's dreams of the future become the realities of today; Adventureland, the wonder world of nature's own design; Fantasyland, where childhood stories become realities for the young at heart of all ages; and Frontierland, depicting the story of a young and enterprising nation and a pioneer people moving Westward.

At Disneyland, you will find more than 35 recreational attractions and amusements to fascinate each member of the family; more than 15 free exhibits and shows; and 50 shops and stores.

Disneyland's purpose is enlightenment, its product happiness for adults and children alike. The detail and authenticity of each land was a "must" to meet the standards of highest caliber entertainment Walt Disney has always given the people of the world.

DISNEYLAND HOLIDAY

Today, two years after Disneyland's opening, Main Street stands as a page out of America at the turn-of-the-century, at the crossroads of an era. The gas lamp is giving way to the electric lamp, and the horse car to the auto car.

Tomorrowland's theme is progress, and time marches only toward the future. It is the atomic age of 1987, where rocket ships blast off for the moon; miniature cars race over Autopia, the safest super highway in the world; and scientific, educational exhibits line the avenues.

In Fantasyland, you fly with Peter Pan over Moonlit London, race through the streets of England with Mr. Toad, and see a panorama of all Disneyland below you from the lofty Skyway.

America's past is still part of our heritage in Frontierland. You relax on the Mark Twain sternwheel riverboat, explore Injun Joe's Cave and Fort Wilderness on Tom Sawyer Island, see tribal dances in the Indian village and watch an old-West stage show at Pepsi-Cola's Golden Horseshoe Revue.

You glide in an explorer's launch along exotic and mysterious jungle rivers in Adventureland, excitement mounting as your guide steers his craft among life-like alligators and hippos, jungle savages and elephants, and escapes the perils of a beautiful waterfall.

All this—and much more—is Disneyland, "The Happiest Place on Earth."

Fun for the Entire Family

The description of Disneyland as "a place for you to find happiness and knowledge" is nowhere better exemplified than in watching a family enjoy the "togetherness" of wholesome fun and entertainment.

On this page are a few of the adventures enjoyed by a typical family visiting Disneyland. Mr. and Mrs. John Maa, daughter Coralee (four), sons Frank (nine) and John J. (seven) live in Provo, Utah. Vacationing in Southern California, they made sure Disneyland was one of their stops. Here are a few of the things they saw and did.

Shopping on Main Street brought caps for the youngsters.



A horse-drawn trolley took them down Main St.

Dad snapped a family photo at Tomorrowland's entrance.

Frank got his first driving test on Autopia.



A spin in the teacups was one of many Fantasyland thrills.

Refreshments preceded cruise on Frontierland's "Mark Twain."



Mom and Dad shopped in Adventureland's Bazaar ...

... while the children found an old favorite.

End of a perfect day; wait 'til we tell our friends!



Preview of Tomorrow: Monsanto's House of the Future

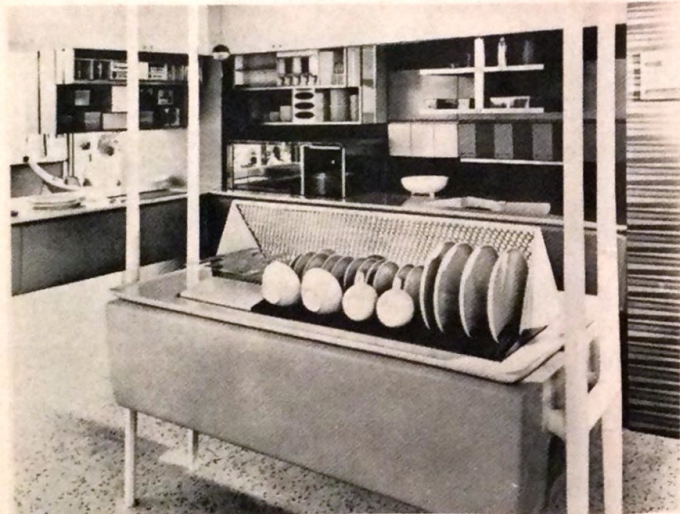
What will the home of tomorrow look like? Is "push button living" really in store for us in the future? In what stage are plans for the development and furnishing of "futuristic" homes?

The most comprehensive answers to these and other questions about the future of home building are now in the visualization stage at Disneyland with the unveiling of a "plastic house" this past Summer.

Product of pioneering in the plastics field by Monsanto Chemical Co., the "House of the Future" is located in the Magic Kingdom's Tomorrowland, preview of the world of 1987. Disneyland visitors are invited to browse through this futuristic home free of charge.

The House of the Future was designed by Monsanto and architects from the Massachusetts Institute of Technology to demonstrate and test the varied uses of plastics in home construction.

In exterior form, the House of the Future is composed of four white cantilevered wings made from molded plastics. Much of the side-wing area is devoted to glass windows. The



House of Future's food center is designed not to look like a kitchen when not in use. Refrigeration units disappear behind plastic paneling at touch of button. In foreground is ultra-sonic dishwasher and communications center.

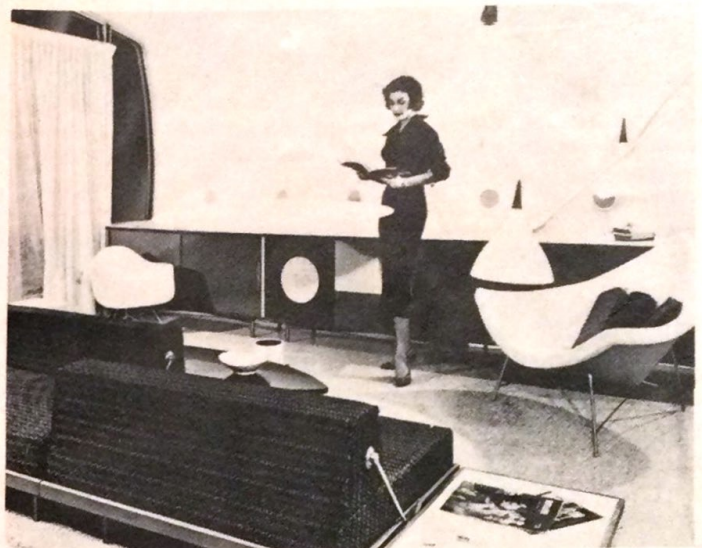
central base supports the wings so that each is well above ground level.

The never-before-seen pioneer developments inside the House of the Future include imaginative new electronic and mechanical aids to man's health, convenience and pleasure.

Disneyland guests visiting the ultra-modern development will find such features as a microwave cooking range; an ultra-

sonic dishwasher housed in a structure which also serves as a desk, communications system center, garbage disposer and work surface; and an adjustable electronic mount which allows the raising and lowering of lavatory sinks to the height of adults or small children.

Two central systems are the climate control and communications centers. The climate control regulates individual room



Typifying the ultra-modern interior of the House of the Future is the living room. The large areas of white are possible through use of new wipe-off and wash-down plastics.


temperature and humidity, purifies air, eliminates undesirable odors and adds pine, sea air or flower scents. In communications, push-buttons replace the telephone dial; screens permit the user to see the person at the other end of the line or callers at the front door.

These are but a few features of Monsanto's House of the Future. You will also be interested in its interior design and custom furnishing, color schemes and decorating, as well as the landscape architecture keynoted by the effects of water and plants.

Ride the

METRO COACH

to DISNEYLAND



Fast, comfortable coaches take you direct to the Disneyland main entrance. Frequent service in both directions permits timing your day as you choose. Many expresses from Metro Depot at 6th & Main St., L.A. Direct service also from East Los Angeles, Downey, Santa Fe Springs, Norwalk, Buena Park, Fullerton, Anaheim, Orange and Santa Ana. Connecting service from Montebello, Whittier, La Habra, Brea, Long Beach, Pasadena, Riverside.

METROPOLITAN COACH LINES
610 S. Main, L. A.—TRinity 7731

TINKER BELL'S  **Enchanted WAND**

GLOWS IN THE DARK FOR HOURS!
A fascinating gift for any youngster. Tinker Bell's star mounted on wand gives off lovely mysterious glow!
Send Only 25c plus 5c tax & postage.
See our Black Light Hall of Enchantment.
Brilliant, Breathtaking, Beautiful!

MINERAL HALL • Frontierland, Disneyland, California
© Walt Disney Productions





Main Street, re-creation of the life and times of the 1890's, is lined with interesting shops, stores and exhibits. You'll also see horse-drawn trolleys, surreys, "horseless carriages" and other old-time vehicles.

The magic appeal of Disneyland is universal: to people of all ages, adults and children alike. There are many attractions, exhibits and shows which the family can enjoy together; and there are many things to suit each individual interest. Pictured on this page are a few of Disneyland's attractions which have proved especially fascinating to adults.



The interiors of Main Street's shops are filled with memories for some, education for younger visitors. Typical is the Upjohn Pharmacy, the apothecary forerunner of today's "drug store."

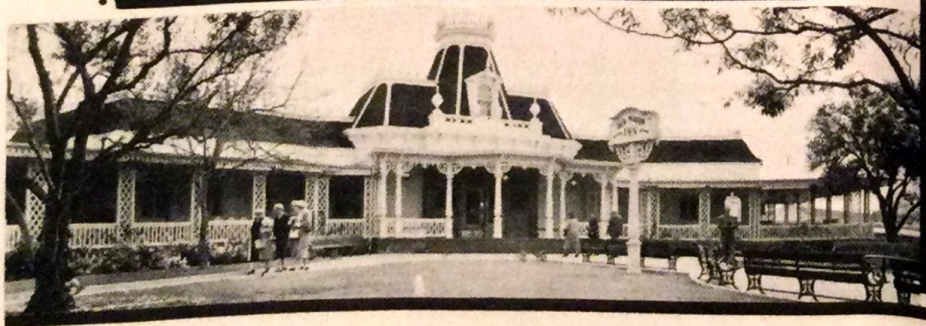


The quiet of Adventureland's dock belies the thrilling journey on the jungle boat cruise through tropic Rivers of the World. Enchanting flowers and plants and exciting simulated jungle animals are encountered.



Adventureland's Bazaar captures the atmosphere of far-off places. Guests shop for curios and other items from Asia (above), the Pacific Islands, South America, Africa and other lands the world over.

RED WAGON RESTAURANT



Authentic Gay 90's Atmosphere

Gay memories become glamorous realities at the air conditioned Red Wagon Restaurant. Featuring sizzling steaks and juicy chops. Complete dinners from \$1.65; luncheon from \$1.50; children's dinners from \$1. Tempting thought: Swift's fine foods are served exclusively in Disneyland.

ON THE PLAZA

What to See in Southern California

Southern California is a paradise of things to see and things to do for visitors. For your enjoyment while in the Southland, DISNEYLAND HOLIDAY is presenting this listing of points of interest, events, shows and historical landmarks. The capsule summaries will help you to plan your itinerary while in this area; from them, you can choose those that suit your particular interests.

Knott's Berry Farm, re-created Ghost Town, replica of 1849 Gold Rush days; fine chicken and steak dinners; noted for berry preserves; nearby Disneyland in Buena Park.

Forest Lawn Memorial Park, famed for statues, stained glass windows and paintings ("The Crucifixion," "The Last Supper"); in Glendale hills behind Hollywood.

Santa's Village, reindeer-drawn Candy Cane Sleigh rides, Santa's Home, Mrs. Claus' Kitchen, Gingerbread House, others; in San Bernardino Mountains near Lake Arrowhead; snow in Winter.

San Diego Zoo, West's largest; rare and unusual zoo animals; also hippos, tigers, bears, gorillas, etc.; bus tours; in Balboa Park, San Diego. Also new Children's Zoo.

Marineland of the Pacific, Oceanarium highlighting underwater "shows" with porpoise, seals, giant sea turtles, sharks and a live whale; on the beach at Palos Verdes Hills, between San Pedro and Redondo Beach.

Farmer's Market, diversified shopping and dining location; stall stands featuring fresh foods, produce in outdoor setting; at 3rd St. and Fairfax Ave., Los Angeles.

Apple Valley, desert playground-resort within easy driving distance of Los Angeles; horseback riding, swimming, golf course.

Olvera Street, glimpse of old (18th Century) Mexico in downtown Los Angeles; preservation of one of city's first streets.

Missions, from Santa Barbara to San Diego; built by the Spanish Jesuit fathers and conquistadors in 18th Century; including San Diego, San Luis Rey (near Oceanside), San Juan Capistrano (near Laguna), San Gabriel, San Fernando, San Buenaventura (near Ventura), Santa Barbara.

Griffith Park Planetarium, nearby Hollywood; views of outer-space in its Observatory; closed Mon. & Tues.

Los Angeles County Museum, in Exposition Park, adjacent to Memorial Coliseum; art galleries, historical and scientific presentations; closed Mondays.

Huntington Library and Art Gallery, home of Gainsborough's "Blue Boy," many other famed paintings; also collectors items in books, furnishings; in San Marino, near Pasadena; open afternoons, closed Mondays.

Chinatown, downtown Los Angeles; recently rebuilt.

Grauman's Chinese Theatre, on Hollywood Blvd.; fingerprints, hand and foot prints and signatures of motion picture stars in cement "lobby" of the theatre.

Los Angeles Harbor, and port area; one of major ports in United States; boat cruises from Long Beach-San Pedro area.

Newport-Balboa Harbor, famed for sailing, yachting; in Orange County, 10 miles from Disneyland.

Laguna Beach, artist colony with picturesque beaches; south on Highway 101.

Catalina Island, 20 miles off California coast, reached by boat or air; glass-bottom boats, bird sanctuary, swimming.

Palm Springs, popular desert playground-resort; swimming, golf, outdoor sports.

"Seven Wonders of the World," third production of "Cinerama" series; at Warners Theatre, Hollywood.

"Around the World in 80 Days," Mike Todd's production; at Carthy Circle Theatre, Los Angeles.

Special Events: Shrine East-West Football Game, Dec. 26 in Kezar Stadium, San Francisco; Rose Parade and Rose Bowl Football Game, Jan. 1 in Pasadena.

Football at Los Angeles Coliseum:

Professional, Los Angeles Rams

Oct. 27, Detroit Lions; Nov. 3, Chicago Bears; Nov. 10, San Francisco '49ers; Dec. 8, Green Bay Packers, Dec. 15, Baltimore Colts (all Sunday games).

College, UCLA

Oct. 12, Washington; Oct. 19, Oregon State; Nov. 2, California; Nov. 23, USC.

College, USC

Oct. 4, Pittsburgh (nite); Oct. 26, Washington State; Nov. 9, Stanford; Nov. 16, Oregon; Nov. 23, UCLA.

(All College games Saturday afternoon unless otherwise indicated.)



AUNT JEMIMA'S OLD SOUTH KITCHEN IN FRONTIERLAND

Pancake and Waffle Specialties

DAVEY CROCKETT'S DELIGHT	45c
(Four Light and Tender Aunt Jemima Pancakes)	
GOLDEN HORSESHOE SPECIAL	45c
(New Deluxe Aunt Jemima Buttermilk Pancakes)	
MARK TWAIN SPECIAL	45c
(Four Tangy Aunt Jemima Buckwheat Cakes)	
LUSCIOUS NATIVE BLUEBERRY PANCAKES	60c
FRESH PICKED STRAWBERRIES CRUSHED AND HEAPED ON GOLDEN AUNT JEMIMA PANCAKES	60c
WILD MOUNTAIN BLACKBERRY PANCAKES	60c
SLUE FOOT SUE'S FAVORITE	45c
(Creamy Egg Rich Aunt Jemima Waffles)	
FRESH CALIFORNIA PECAN WAFFLE	60c
CREAMY-RICH AUNT JEMIMA WAFFLE A-LA-MODE	65c
APPLE PANCAKE ROLL-UPS	70c
(Luscious Apple Slices rolled in Aunt Jemima's a-la-mode)	

FRESH CREAMERY BUTTER

(Cold Fresh Milk 15c, Steaming Homemade Coffee, 10c)

Maple and Wild Berry Syrups featured



LUXURIOUS 7-passenger limousines for private sightseeing... your liveried chauffeur is an experienced guide. Special Disneyland itinerary can be custom-planned for your party. See your travel agent or write

TANNER GRAY LINE

Motor Tours • 1207 W. 3rd St.
Los Angeles 17, Calif.

MUTUAL 3111



ENJOY A
Fun-Filled Vacation
 AT
APPLE VALLEY INN

Year-'round fun on the high desert,
 where the air is clean and the temperature
 moderate, every month of the year!

HAVE A WEEK-DAY VACATION!

Includes:

- Two full days and two glorious nights
- Luxurious Accommodations
- Outdoor Western Steak Fry
- Sumptuous Buffet Dinner
- Complimentary Social Hour
- Dancing and Entertainment
- Tennis, swimming and other outdoor entertainment privileges.

ARRIVE ANY MONDAY OR WEDNESDAY

Enjoy 2 full days & 2 full nights of
 Vacation Fun!

JUST

\$19⁰⁰

PER PERSON
 DOUBLE OCCUPANCY

*For reservations
 contact our Apple Valley Inn Offices:*

- | | |
|-------------|------------------|
| Los Angeles | Stanley 7-1678 |
| Hollywood | HOLLYWOOD 2-0978 |
| Encino | STate 9-8173 |
| San Marino | SYcamore 6-1488 |
| Westchester | ORegon 8-9984 |
| Riverside | OVERland 3-8771 |
| Long Beach | GARfield 7-0989 |
| San Diego | ATwater 1-5536 |

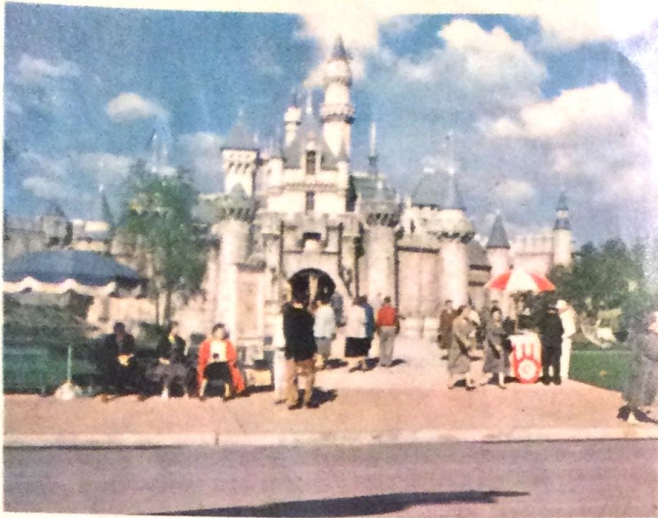
Disneyland-Santa Ana JEFFerson 1-2933

or call direct:

APPLE VALLEY 7-7271 • Teletype Victorville Cal 8788



A FEW PICTORIAL SCENES OF YOUR



The Sleeping Beauty Castle marks the entrance to Fantasyland, happiest land of them all.



Playing concerts around the Town Square flagpole or marching down Main Street, The Disneyland Band entertains Magic Kingdom visitors.



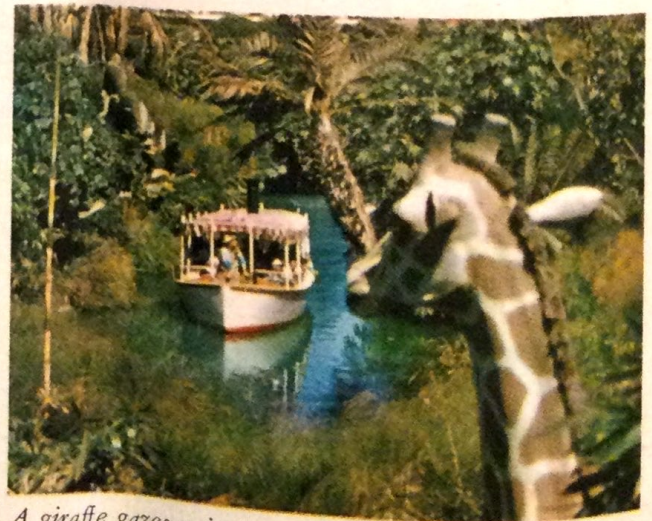
Frontierland's bustling river provides fun-filled cruises on the riverboat Mark Twain, keelboats, rafts and Indian war canoes. The log rafts travel to Tom Sawyer Island.



Tomorrowland, the world of the future, blueprint of things to come in the world of 1987.



Main Street's policeman, dressed in 1900 uniform, points out some of the attractions of the turn-of-the-century town.



A giraffe gazes quizzically at the Adventureland explorer's boat carrying passengers on an exciting cruise over jungle rivers, where thrilling adventures lurk at every bend.

TOUR THROUGH THE MAGIC KINGDOM



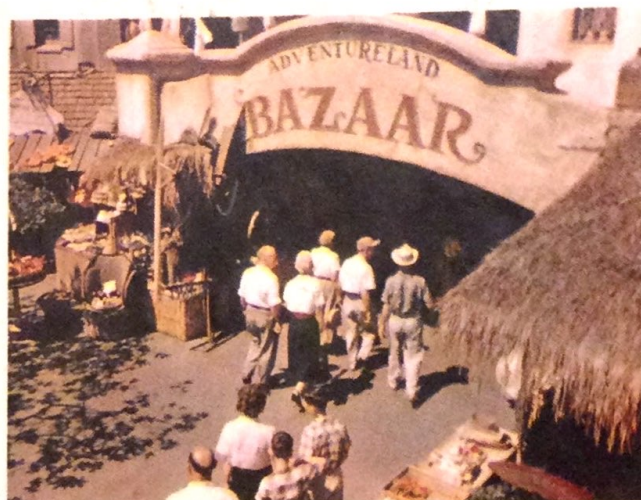
Fun for the young at heart of all ages in Fantasyland, where flying Dumbos are just part of this exciting adventure in the realm of storybook classics.



Old Nellie pulls a streetcar down Main Street just as her forebears once hauled passengers on main streets of 1890.



A stagecoach wheels across Rainbow Desert, reliving Frontier days of hardy Western pioneers.



The exotic atmosphere of the tropics, the Orient, Africa and Latin America is the setting for curio shopping at the Adventureland Bazaar.



The Santa Fe and Disneyland passenger train is boarded at the Main Street Station for its trip around Disneyland.



A light and gay free stage show with can-can girls, singers and comedy stars is featured at Pepsi-Cola's Golden Horseshoe Revue in Frontierland.

HIGHLIGHT YOUR TRIP TO SOUTHERN CALIFORNIA



This exact reproduction of Michelangelo's colossal statue of "David" towers more than 20 feet above those who view it.

Visit FOREST LAWN

Forest Lawn is one of the West's greatest tourist attractions, the World's finest Memorial-Park and an internationally famous art center. It encompasses over 300 acres. Each year more than 1,500,000 sight seekers thrill to its living beauty—to the romance of this Park where over 43,000 people have been married in its three old-world churches. On display here are over 1100 masterpieces of painting, sculpture, and stained glass—including all the great works of Michelangelo. Forest Lawn is a park so beautiful that it has been described as, "a bit above the level of this world—a first step up toward Heaven."

Shown here are a few of the points of interest you'll want to see when you visit Forest Lawn Memorial-Park.



Central section of "The Crucifixion," America's largest religious painting—45-feet in height, 195-feet in length. Shown on the hour from 10 AM to 5 PM.



The charm of the Scottish kirk, where Annie Laurie worshipped, is preserved in the Wee Kirk 'o the Heather Church, an exact reproduction of the original.



"The Last Supper" in stained glass is an unforgettable "must" for everyone who visits Forest Lawn. Shown hourly from 9 AM to 4 PM.

OPEN DAILY FROM 8:30 AM TO 5:30 PM

FOREST LAWN Memorial-Park

1712 South Glendale Avenue, Glendale, California

Copyright 1957, Forest Lawn Memorial-Park Assn.

Service for Travelers Is Specialty of Information Center

"Old-fashioned" hospitality and service haven't disappeared completely in the hustle and bustle of today's modern living.

Main Street, Disneyland's page out of the life and times of the 1890's, retains the flavor of the "good old days" not only in its architecture, furnishings and modes of transportation—but also in the courtesy and friendliness of the personnel in its numerous exhibits, stores and shops.

With employees dressed in the colorful garb of the times (ankle-length full skirts and frilly blouses for the women; string ties, straw hats and blazers for the men) Main Street carries out the leisurely atmosphere of the turn-of-the-century while providing entertainment and services for Disneyland guests.

One Main Street exhibit helping to preserve this theme is the Information and Registration Center operated as a free service



"It's Marge and Bill!" Mr. and Mrs. Charles Mousseau of Detroit, Mich., are among those who have found the names of friends in guest registry books at the Information Center.

to travelers by the North America Companies, insurance firm with 20,000 Independent Local Agents throughout the United States.

Located at the end of Main Street just across from the Red Wagon Restaurant, North America's exhibit is lavishly furnished to represent the lobby of a 1900-era hotel.

"Old-fashioned" as it is in decor and the dress of its hostesses, the Information Center's service to Disneyland visitors is up to date and complete. Visitors from every state in America and from more than 60 foreign nations have dropped in to

register their names in guest books and to receive travel information.

The Information and Registration Center is designed to accommodate the numerous out-of-state visitors who come to Disneyland.

Donna Rochelle, who manages the exhibit, and her assistants provide Disneyland guests with brochures from motels and hotels in California, Nevada and Arizona. They also supply road maps for Western states, street maps of the Los Angeles area and bus, helicopter, airline and train schedules.

An additional service to travelers is the variety of brochures and information material from Southern California points of interest. Guests may obtain information and directions in regard to many of the area's attractions, including Knott's Berry Farm, Forest Lawn Memorial Park, Santa's Village, Marineland of the Pacific, the San Diego Zoo and the Farmers Market.

An interesting story in themselves are the Guest Registration books which visitors are invited to sign.

In addition to people from all 48 American states, travelers from almost all the countries of Europe and such distant points in the world as Japan, New Zealand, Siam, India, New Guinea, South Africa, the Fiji Islands, Pakistan and Arabia have signed the registry books, many in symbols of their native lands.

Disneyland

GOURMET RESTAURANTS

Located at The Disneyland Hotel
across from the Disneyland Auto Park exit

An enjoyable experience in an atmosphere suited to relaxed dining

BREAKFAST	DINNER
LUNCHEON	COCKTAILS

*The ultimate in cuisine and service
Your favorite beverages expertly prepared*

Luncheon from \$1.25	Dinners from \$2.35
---------------------------------------	--------------------------------------

Special Children's Menus

See our Banquet Manager for Private Parties 25 - 500
Phone KEystone 5-2297
1441 So. West St., Anaheim, Calif.

Really See

Disneyland

via **GUIDED TOURS!**

Visit Disneyland via luxury Tanner Gray Line coach, with experienced guide to point out sights... Reasonable rates for half-day and all-day tours include transportation and sightseeing. See your travel agent, or ask at hotel desk.

TANNER GRAY LINE
Motor Tours
1207 W. 3rd St., Los Angeles 17
Mutual 3111

Service for Travelers Is Specialty of Information Center

"Old-fashioned" hospitality and service haven't disappeared completely in the hustle and bustle of today's modern living.

Main Street, Disneyland's page out of the life and times of the 1890's, retains the flavor of the "good old days" not only in its architecture, furnishings and modes of transportation—but also in the courtesy and friendliness of the personnel in its numerous exhibits, stores and shops.

With employees dressed in the colorful garb of the times (ankle-length full skirts and frilly blouses for the women; string ties, straw hats and blazers for the men) Main Street carries out the leisurely atmosphere of the turn-of-the-century while providing entertainment and services for Disneyland guests.

One Main Street exhibit helping to preserve this theme is the Information and Registration Center operated as a free service

register their names in guest books and to receive travel information.

The Information and Registration Center is designed to accommodate the numerous out-of-state visitors who come to Disneyland.

Donna Rochelle, who manages the exhibit, and her assistants provide Disneyland guests with brochures from motels and hotels in California, Nevada and Arizona. They also supply road maps for Western states, street maps of the Los Angeles area and bus, helicopter, airline and train schedules.

An additional service to travelers is the variety of brochures and information material from Southern California points of interest. Guests may obtain information and directions in regards to many of the area's attractions, including Knott's Berry Farm, Forest Lawn Memorial Park, Santa's Village, Marineland of the Pacific, the San Diego Zoo and the Farmers Market.

An interesting story in themselves are the Guest Registration books which visitors are invited to sign.

In addition to people from all 48 American states, travelers from almost all the countries of Europe and such distant points in the world as Japan, New Zealand, Siam, India, New Guinea, South Africa, the Fiji Islands, Pakistan and Arabia have signed the registry books, many in symbols of their native lands.



"It's Marge and Bill!" Mr. and Mrs. Charles Mousseau of Detroit, Mich., are among those who have found the names of friends in guest registry books at the Information Center.

to travelers by the North America Companies, insurance firm with 20,000 Independent Local Agents throughout the United States.

Located at the end of Main Street just across from the Red Wagon Restaurant, North America's exhibit is lavishly furnished to represent the lobby of a 1900-era hotel.

"Old-fashioned" as it is in decor and the dress of its hostesses, the Information Center's service to Disneyland visitors is up to date and complete. Visitors from every state in America and from more than 60 foreign nations have dropped in to

Really See
Disneyland
via 
GUIDED TOURS!

Visit Disneyland via luxury Tanner Gray Line coach, with experienced guide to point out sights... Reasonable rates for half-day and all-day tours include transportation and sightseeing. See your travel agent, or ask at hotel desk.

TANNER GRAY LINE
Motor Tours
1207 W. 3rd St., Los Angeles 17
Mutual 3111

Disneyland

GOURMET RESTAURANTS

Located at The Disneyland Hotel
across from the Disneyland Auto Park exit

An enjoyable experience in an atmosphere suited to relaxed dining

BREAKFAST	DINNER
LUNCHEON	COCKTAILS

*The ultimate in cuisine and service
Your favorite beverages expertly prepared*

Luncheon from \$1.25	Dinners from \$2.35
---------------------------------------	--------------------------------------

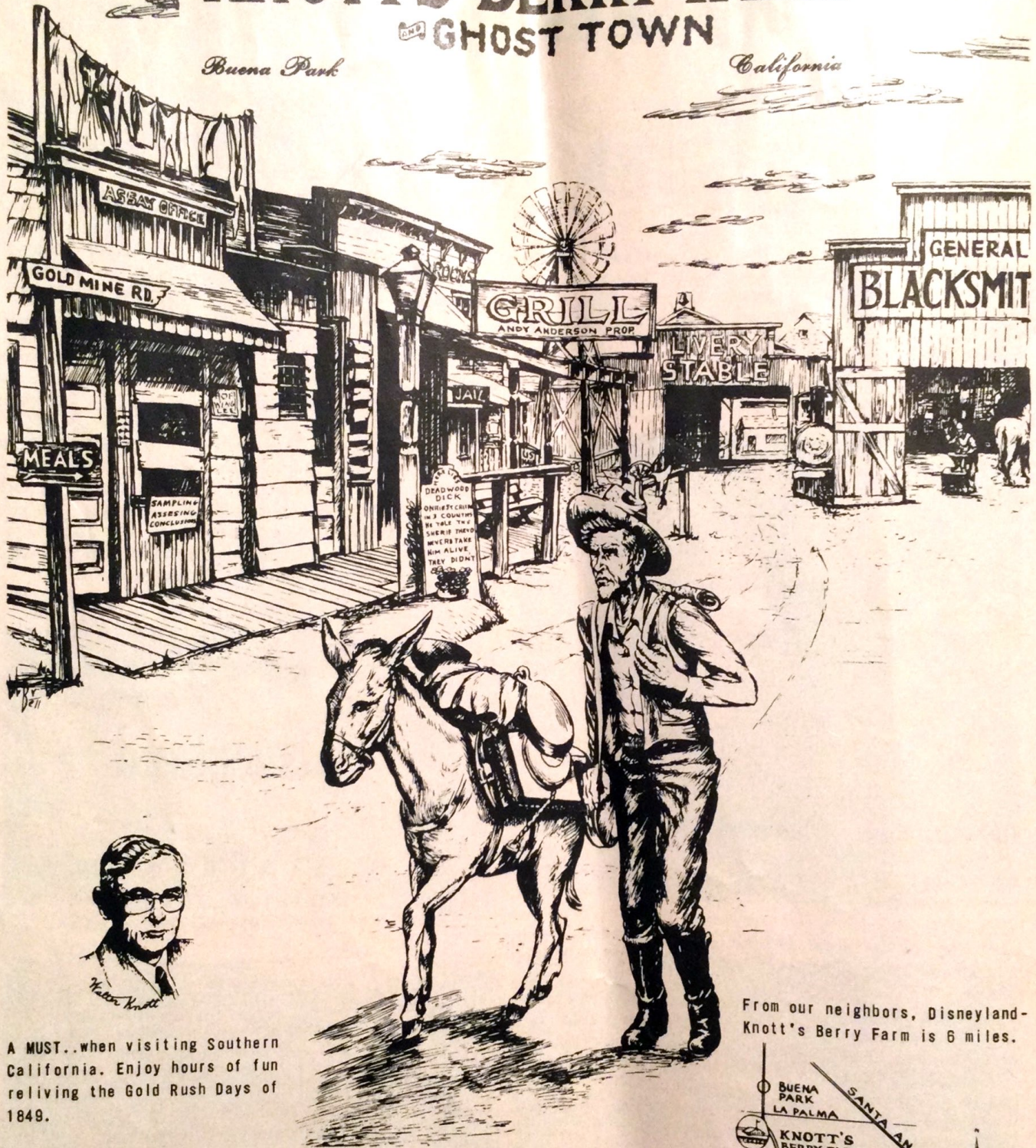
Special Children's Menus
See our Banquet Manager for Private Parties 25 - 500
Phone KEystone 5-2297
1441 So. West St., Anaheim, Calif.

KNOTT'S BERRY FARM

THE GHOST TOWN

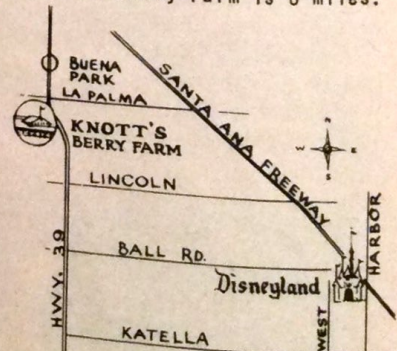
Buena Park

California



A MUST...when visiting Southern California. Enjoy hours of fun reliving the Gold Rush Days of 1849.

From our neighbors, Disneyland-Knott's Berry Farm is 6 miles.



CHICKEN DINNER RESTAURANT
STEAK HOUSE **UNIQUE SHOPS**
ENTERTAINMENT

KNOTT'S BERRY FARM OWNED AND OPERATED BY THE FOUNDERS, MR. AND MRS. WALTER KNOTT AND FAMILY

Free Attractions . . .

(Continued from page 7)

That's Pepsi Cola's Golden Horseshoe Revue, playing to enthusiastic audiences in Frontierland.

Presented free of charge four times each day, the Golden Horseshoe Revue is a re-creation of a 19th Century "Wild West" stage show, with singers, comedy and can-can dancing girls providing a lively 45 minute production.

Stars are Betty Taylor as singing hostess "Slue Foot Sue"; Donald Novis, the silver-toned tenor with the Irish melodies; and Wally Boag, fun-loving comedian with a bag full of tricks.

* * *

Save some time during your visit to Disneyland to browse through the fascinating stores, shops and exhibits.

A few of the "don't miss" variety on Main Street are Swift's 1890 Market House, the old-time meat market with its pot-bellied stove; the glass blowers forming beautiful objects by



Christmas carolers, brightly-lit Christmas trees and all the trimmings in Main Street stores will highlight the Christmas Festival, Dec. 16-Jan. 5 at Disneyland.

heating and cooling glass; the silhouette artists cutting visitors' images from paper; and Upjohn's 19th Century apothecary, forerunner of today's drug store.

You could stay for hours just browsing through the Bazaar in Adventureland. Native curios and unusual items from exotic and tropic regions all over the world are on display.

* * *

The above are just a few of the unique and unusual from the pages of history, adventure, imaginative creations and fantasy that are all woven into the wonderful world that is Disneyland. Whether you have a few hours or several days to see Walt Disney's Magic Kingdom, you won't want to return home without visiting Disneyland . . . now open every day.

**Really SEE
Disneyland
on an AVIS—
DISNEYLAND HOTEL
PACKAGE TOUR!**

Rent a fine Ford or other make, and stay at fabulous Disneyland Hotel, on special two, three and four day package tours . . . ask your travel agent, or write

**AVIS-TANNER
GRAY LINE Motor Tours**
1207 W. 3rd St., Los Angeles 17
MUtual 3111

THEY'RE MUSTS AT TOMORROWLAND!

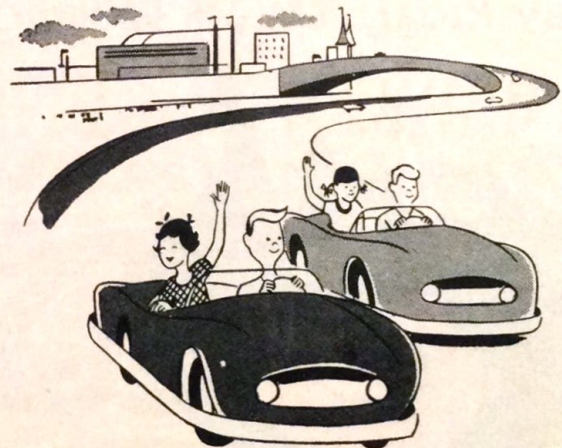


RICHFIELD'S FREE SHOW

"The World Beneath Us"

See the explosive birth of our planet... the appearance of life on earth... age of mastodons... evolution of man... interplay of underground forces.

Wide screen, full color Cinemascope
by Walt Disney



RIDE RICHFIELD'S

Fabulous Autopia

Model Freeway of the Future, with cars the youngsters can safely drive. Thrills galore.

On your way back from Disneyland
stop for a tankful of

RICHFIELD

THE OFFICIAL GASOLINE OF **Disneyland**

© 1957 W. D. P.

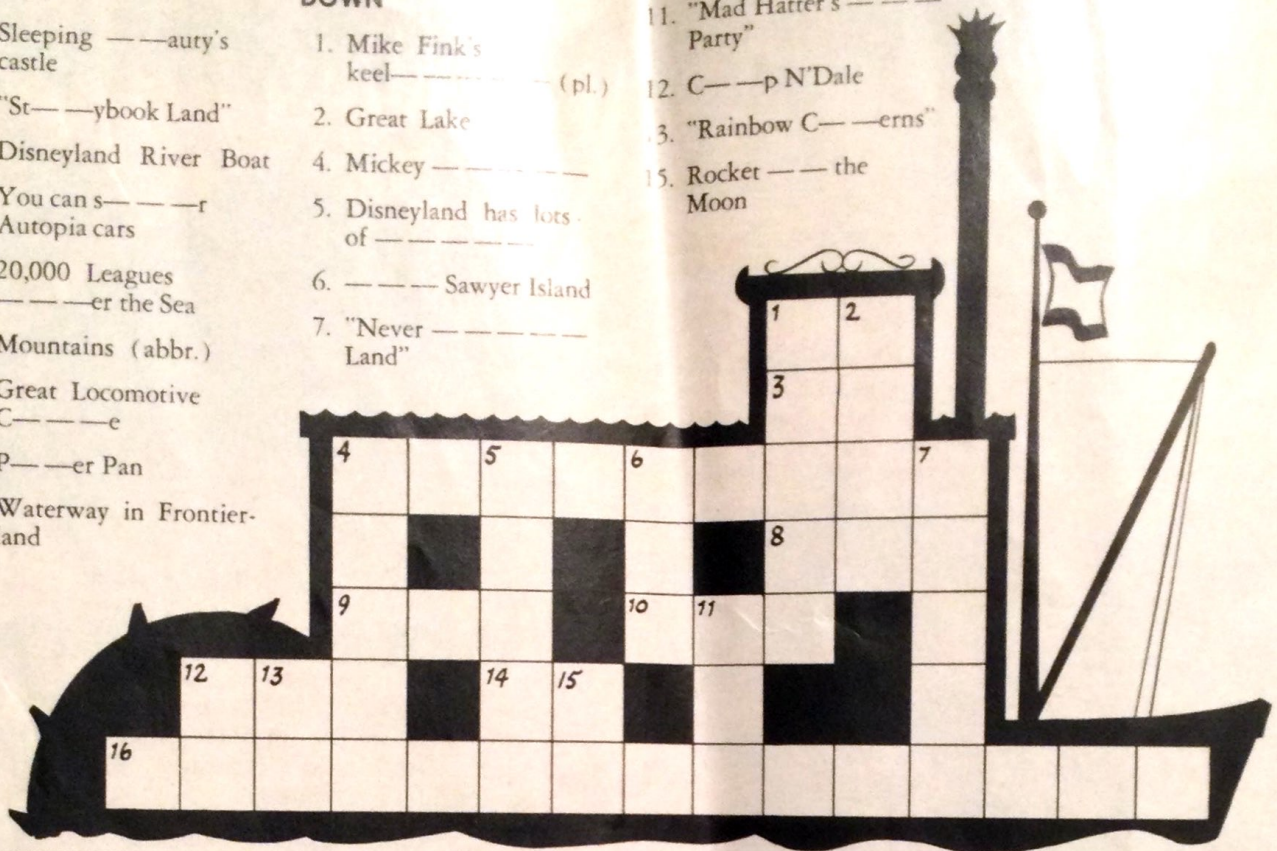
DISNEYLAND CROSSWORD PUZZLE

ACROSS

1. Sleeping _____'s castle
3. "St_____ybook Land"
4. Disneyland River Boat
8. You can s_____r Autopia cars
9. 20,000 Leagues _____er the Sea
10. Mountains (abbr.)
12. Great Locomotive C_____e
14. P_____er Pan
16. Waterway in Frontierland

DOWN

1. Mike Fink's keel_____ (pl.)
2. Great Lake
4. Mickey _____
5. Disneyland has lots of _____
6. _____ Sawyer Island
7. "Never _____ Land"
11. "Mad Hatter's _____ Party"
12. C_____p N'Dale
13. "Rainbow C_____erns"
15. Rocket _____ the Moon



Hey kids! HERE'S A BANG-UP IDEA! A new frosting Mom can use to sweeten up any meal of the day!

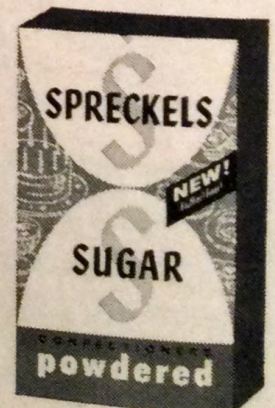


Betcha never tasted a frosting this good, so ask Mom to make a batch (the recipe's on every box of Spreckels Powdered Sugar).

Tell Mom it's gotta be made with brand-new Spreckels Powdered Sugar because it's so fluffy. And when Spreckels frosting's in your refrigerator, you can eat it new ways like this...

- Toast topped with Spreckels Quick 'N Easy Frosting (tastes swell after school!)
- Spreckels frosting instead of syrup on pancakes or waffles (makes the best breakfast ever!)
- Spreckels new frosting's extra-special on cakes, too!

And when Mom shops for Spreckels Powdered Sugar, remind her about the extra-thrifty 2, 5, 10 and 25-pound bags of Spreckels Granulated Sugar.



Disneyland uses Spreckels Sugar Exclusively

... why not use it at your house, too!

DIARY OF OUR TRIP

Today	We Visited . . .	And We Saw . . .	We Most Enjoyed . . .	We Stayed At	We Travelled
					miles
					miles
					miles
					miles
					miles
					miles
					miles
					miles
					miles



TRAVEL REFRESHED!
HAVE A SPARKLING...

PEPSI-COLA®

When you are going places and doing things,
 enjoy Pepsi-Cola—
 the LIGHT refreshment, NEVER FILLING.



**BE SURE TO SEE PEPSI-COLA'S
 GOLDEN HORSESHOE REVUE
 PRESENTED FREE AT DISNEYLAND**

Information for Your Trip to Disneyland

Every week letters pour into Disneyland from all over the United States and many parts of the world, requesting information about Walt Disney's Magic Kingdom to help in planning vacation trips. As a service to you, DISNEYLAND HOLIDAY is presenting the following information as a guide to planning a visit to the Magic Kingdom.

Where is Disneyland located?

You will find Disneyland in Anaheim, 22 miles southeast of Los Angeles, easily reached on the freeway system by auto or public transportation. A turn off the Santa Ana Freeway onto Harbor Blvd. will take you directly to the Magic Kingdom's Main Entrance.

What hours is Disneyland open?

Disneyland is open every day in the week all year 'round. During the Fall and Winter months, the Magic Kingdom is open from 10:00 a.m. to 7:30 p.m. daily. On holidays, Disneyland remains open until 10:00 p.m. This Fall, the holiday schedule will be in effect Nov. 11 (Veterans Day); Nov. 28, 29, 30 and Dec. 1 (Thanksgiving holidays); and from Monday, Dec. 16 through Sunday, Jan. 5 (Christmas holidays). Of course, Disneyland is open every day during the year until 7:30 p.m.

How long should we plan to stay?

According to research compiled at the Magic Kingdom, most families make a full day of their trip, staying five or more hours here. Many families find that, in order to see all of Disneyland's wonders including the shows and exhibits, a longer stay is desirable. If possible, plan your trip to Disneyland so that you can stay one or two full days.

How much will a visit to Disneyland cost?

For the most enjoyable and thriftiest way to visit Disneyland, we suggest the money-saving "Jumbo 15" or "Big 10" Ticket Book plans. The "Jumbo 15" plan offers admission and a choice of 15 attractions from a list that includes every attraction in the Magic Kingdom for a single price of \$3.00 for children, \$3.50 for juniors and \$4.00 for adults. The "Big 10" plan gives you admission and a choice of 10 attractions from the same list for \$2.00 for children, \$2.50 for juniors and \$3.00 for adults.

General admission to Disneyland for children under 12 is 50 cents; for juniors (ages 12 to 17), 70 cents; and for adults, 90 cents. General admission tickets entitle guests to admission to Disneyland's more than 15 free exhibits, shows and amusements and to visit the four "lands" and Main Street.

Does Disneyland have restaurants or food facilities?

Definitely. The Magic Kingdom offers its visitors a complete range of food and eating services. There are 18 fine restau-

rants to serve the public within Disneyland, and the Gourmet Restaurants at the Disneyland Hotel, offering everything from full course steak dinners to quick snacks and sandwiches.

Should we bring our cameras?

By all means, yes. Walt Disney's Magic Kingdom is also his camera kingdom. One of Walt's major considerations in the design and construction of Disneyland was arrangement for visual—and camera—effect. To record permanently your Disneyland visit, still and motion picture cameras are always in order. Film is available at numerous locations throughout the Magic Kingdom. Taking motion pictures or other film for commercial use, exhibition or for use where admission is charged is not permitted without the written consent of Disneyland, Incorporated.

Is Disneyland served by public transportation?

Disneyland is accessible by bus and helicopter on a regular schedule every day of the week. Metropolitan Coach Lines, Tanner Gray Line Motor Tours, Pacific Greyhound Lines and Southland Bus Lines all offer bus service from various Southern California points to the Magic Kingdom. Both Tanner Gray Line and Airport Coach Service offer limousine service to Disneyland. In addition, Los Angeles Airways operates daily helicopter flights to Disneyland's own Heliport. Consult the individual companies for information and time schedules.

Where can I get further information about Disneyland?

For information on anything not covered here, write or phone: Director of Customer Relations, Disneyland, Anaheim, California.

Vol. 1—No. 3

Fall 1957

DISNEYLAND HOLIDAY

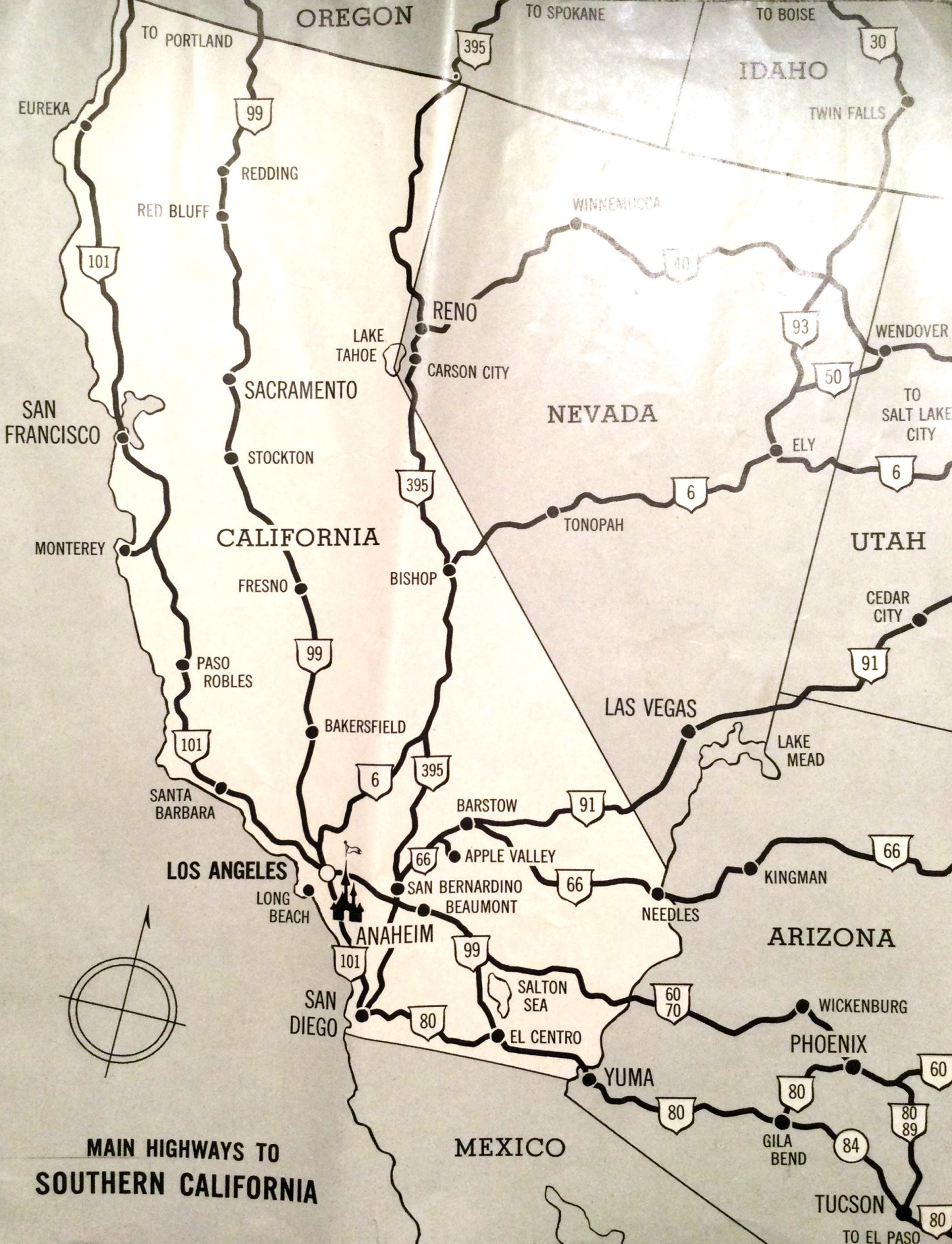
Honorary Editor-in-Chief.....Walt Disney
Editor.....Martin A. Sklar
Advertising Manager.....Jack Lindquist
Circulation Manager.....William G. Schwenn
Advertising information from Jack Lindquist,
Disneyland.

Circulation: 250,000 per issue.

All rights reserved. Reprint of material only upon written request of Disneyland, Inc.

DISNEYLAND HOLIDAY is published quarterly by Disneyland, Inc.

Disneyland photos by Tom Shannon



**MAIN HIGHWAYS TO
SOUTHERN CALIFORNIA**



Disneyland

SANTA ANA FREEWAY
AT HARBOR BLVD.
ANAHEIM

SANTA CATALINA ISLAND

LAKE ELSINORE

SAN DIEGO MISSION

SAN DIEGO ZOO

SAN JUAN CAPISTRANO MISSION

SAN CLEMENTE

OCEANSIDE

LA JOLLA

SAN DIEGO

LAGUNA BEACH

NEWPORT-BALBOA HARBOR

HUNTINGTON BEACH

SANTA ANA

COSTA MESA

GARDEN GROVE BLVD.

LONG BEACH

MARINELAND

COAST HWY.

ALT. 101

PACIFIC

MANHATTAN BEACH
REDONDO BEACH

L.A. INTERNATIONAL AIRPORT

INGLEWOOD

MANCHESTER

HUNTINGTON PARK

LOS ANGELES

BEVERLY HILLS

U.C.L.A.

HOLLYWOOD

GLLENDALE

BURBANK

VAN NUYS

SAN FERNANDO

MT. WILSON OBSERVATORY

ROSE BOWL

PASADENA

ARCADIA

SAN GABRIEL MISSION

AZUSA

WEST COVINA

ALHAMBRA

WHITTIER

POMONA

L.A. COUNTY FAIR

LA HABRA

FULLERTON

RIVERSIDE

CORONA

SAN BERNARDINO

COLTON

ONTARIO

UPLAND

TO APPLE VALLEY & LAS VEGAS

HAT'L ORANGES SHOW

TO PALM SPRINGS

SANTA'S VILLAGE

LAKE ARROWHEAD

MT. BALDY

BAKERSFIELD

LANCASTER

SAN FERNANDO MISSION

TO SANTA BARBARA

TO SANTA BARBARA

SANTA MONICA