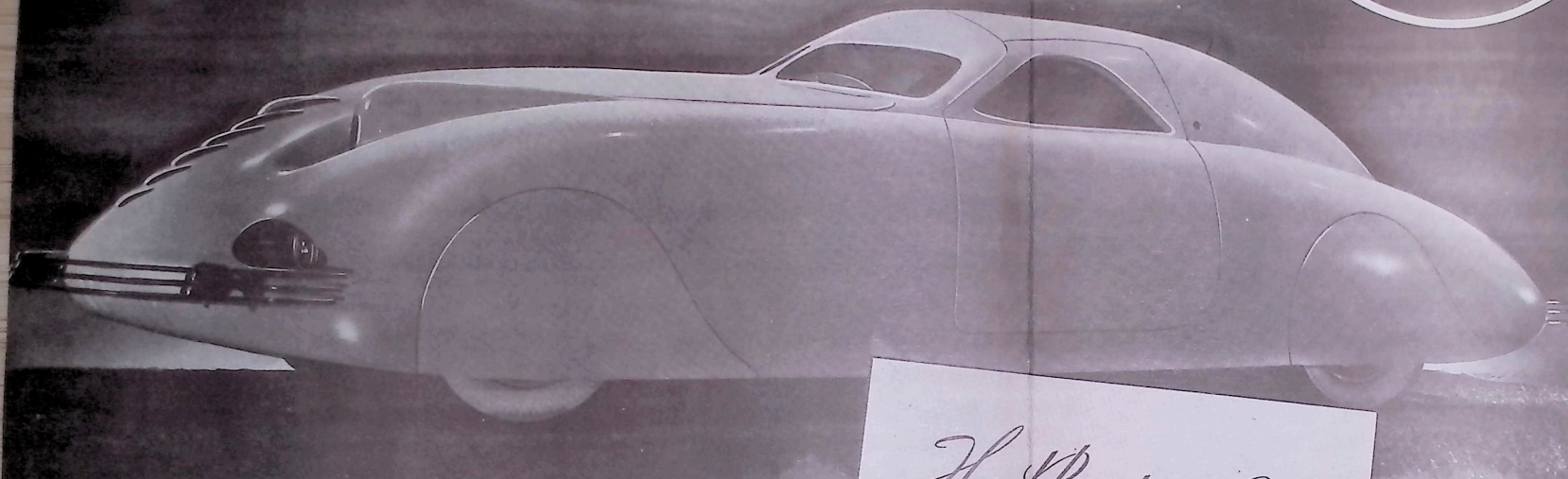


(1938) 200-

The Phantom Corsair

1938



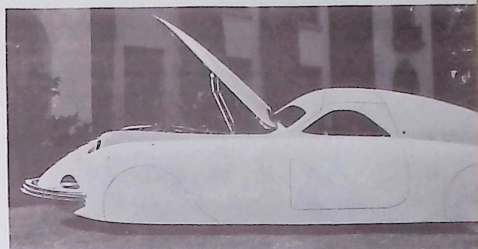
SAFETY FEATURES form an inherent part of this unique six-passenger coupe. The car is of all-steel construction . . . with lower frame of chrome molybdenum steel, upper frame of electrically-welded aviation steel tubing and an outerskin of alloy steel. Green-tinted, non-glare safety glass is used throughout. The car is underslung for greater roadability . . . and the passenger compartment is lined with rubber under upholstery of tufted design.

The Phantom Corsair

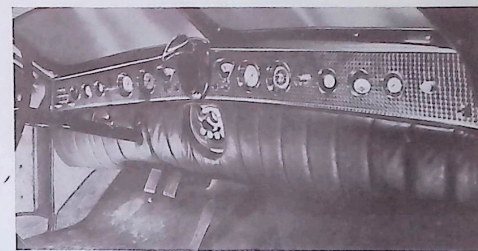
THE PHANTOM CORSAIR embodies advanced ideas of comfort, speed, safety and mechanical perfection . . . coupled with futuristic beauty and simplicity. The PHANTOM CORSAIR incorporates many unusual features, a few of which are herewith depicted. It is streamlined to the ultimate—tested throughout for aerodynamic accuracy. With front-wheel drive, electric gear shift and four speeds forward, it has an approximate top speed of 115 miles per hour. With winter and summer air conditioning and numerous luxury appointments . . . with an especially-treated aviation steel body to eliminate vibration and rumble and to minimize possibility of accident . . . the PHANTOM CORSAIR has been acclaimed one of the most unique motor cars yet designed — a motor car styled for tomorrow!



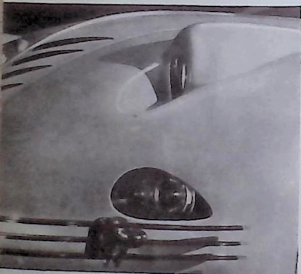
FOUR RIDE ABBREAST on the front seat (left). Because the body of the car covers all wheels, there are no running boards or fenders. This accounts for the unusual width of the seat. It measures 67½ inches. Two passengers ride on the enclosed rumble seat. Seats are of solid rubber, which, with advanced ideas of car springs, makes for the ultimate in riding comfort. To provide more head room for entering or leaving, distinctive upper doors (above) have been set in the top of the car. These doors open and close simultaneously with the conventional door, by means of a simple automatic device. They are water-proof, rattle-proof.



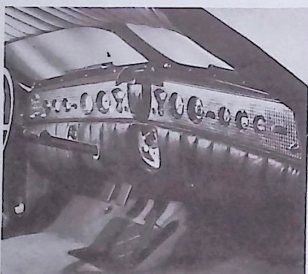
TOUCH A BUTTON on the instrument panel and the hood raises. The hood, hinged at rear, is of a new aluminum alloy, and like the rest of the car body it is sprayed inside with cork and latex to eliminate rattle and normal highway noise.



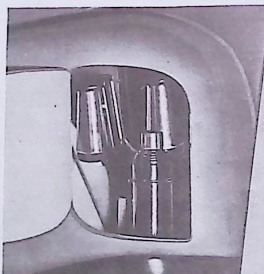
BENEATH THE INSTRUMENT PANEL is a "non-crash" board, which is made of steel and firmly attached to the car. It is covered with cork and two-inch sponge rubber and upholstered in leather to minimize injury in case of accident.



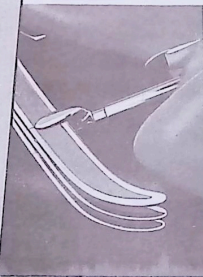
BUILT-IN HEADLIGHTS provide 180-degree roadway illumination. Lower fog lights also are built in the car body. Chromium-lined tunnels reflect light to the sides of the car, as well as straight ahead. Tubular bulbs cast a broad beam over the interior.



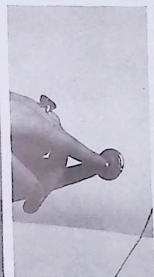
ALL INDICATORS on the instrument panel may be read at a glance. There are fuel, oil, speed, mileage and ampere dials; battery, R.P.M. and engine efficiency indicators; oil temperature and pressure gauges, altimeter, compass, cigar lighters.



A LUXURY COMPARTMENT is located on either side of the rumble seat. Thermos bottles are of stainless steel . . . glasses of spun aluminum. Compartments light automatically.



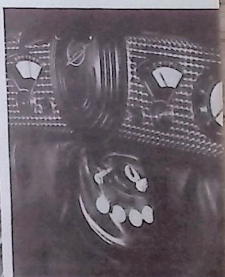
NO ORDINARY BUMPERS THESE! Formed by three parallel plates of spring steel, connected by tubular arms with recoil spring action, they work in connection with the hydraulic unit.



NO DOOR HANDLES! Doors swing open at the touch of buttons located on the outside and on the instrument panel.



THE EXHAUST SYSTEM contains no muffler. At the rear of the car is a tail pipe of stainless steel, gasses passing through a series of expansion chambers which deaden sound.



AN ALL-WAVE RADIO, with two speakers, is built in the Phantom Corsair. An aviation-type aerial is installed underneath the car.



The PHANTOM CORSAIR is a distinguished individualized design from the studio of Rust Heinz. It is typical of many automotive and marine advancements which Mr. Heinz has developed for passenger and commercial uses. Refreshing in their simplicity, these creations are marked by a distinctive, sweeping grace and combine striking modern beauty with highly functional construction.

The varied talents of Rust Heinz are available to individuals and corporations for the solution of problems involving original creative design. All inquiries, including those concerning the Phantom Corsair, should be directed to 625 South Orange Grove, Pasadena, Calif.