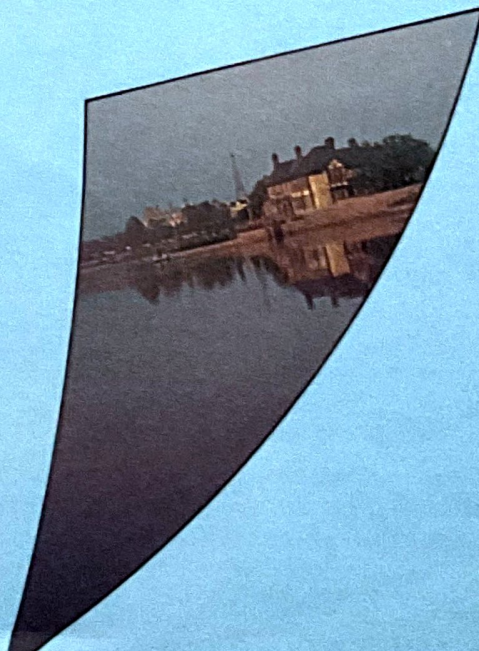
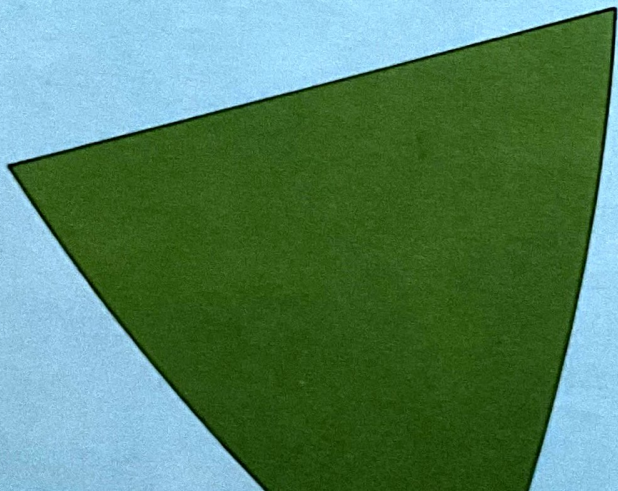
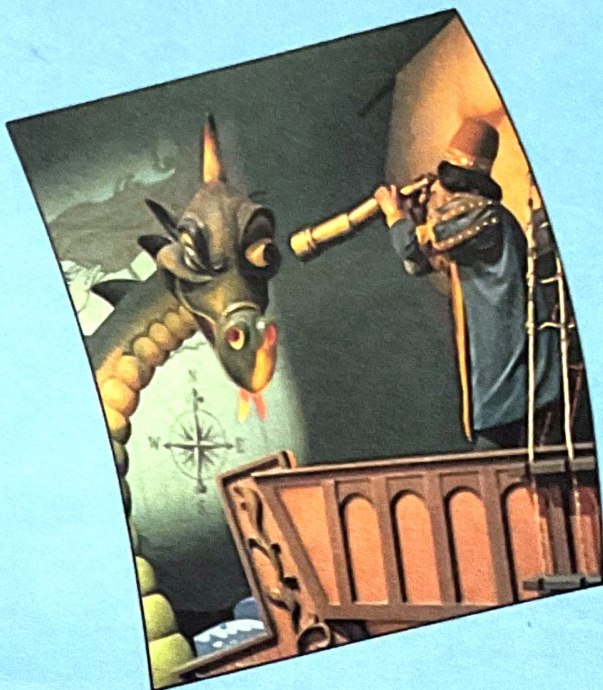


Disneyland LINE

Vol. 14 No. 38 September 30, 1982



Epcot Center: It Begins...



Rising in a series of steps thirty-six feet above the lagoon, an ancient Mayan temple is the centerpiece of the Mexican pavilion.

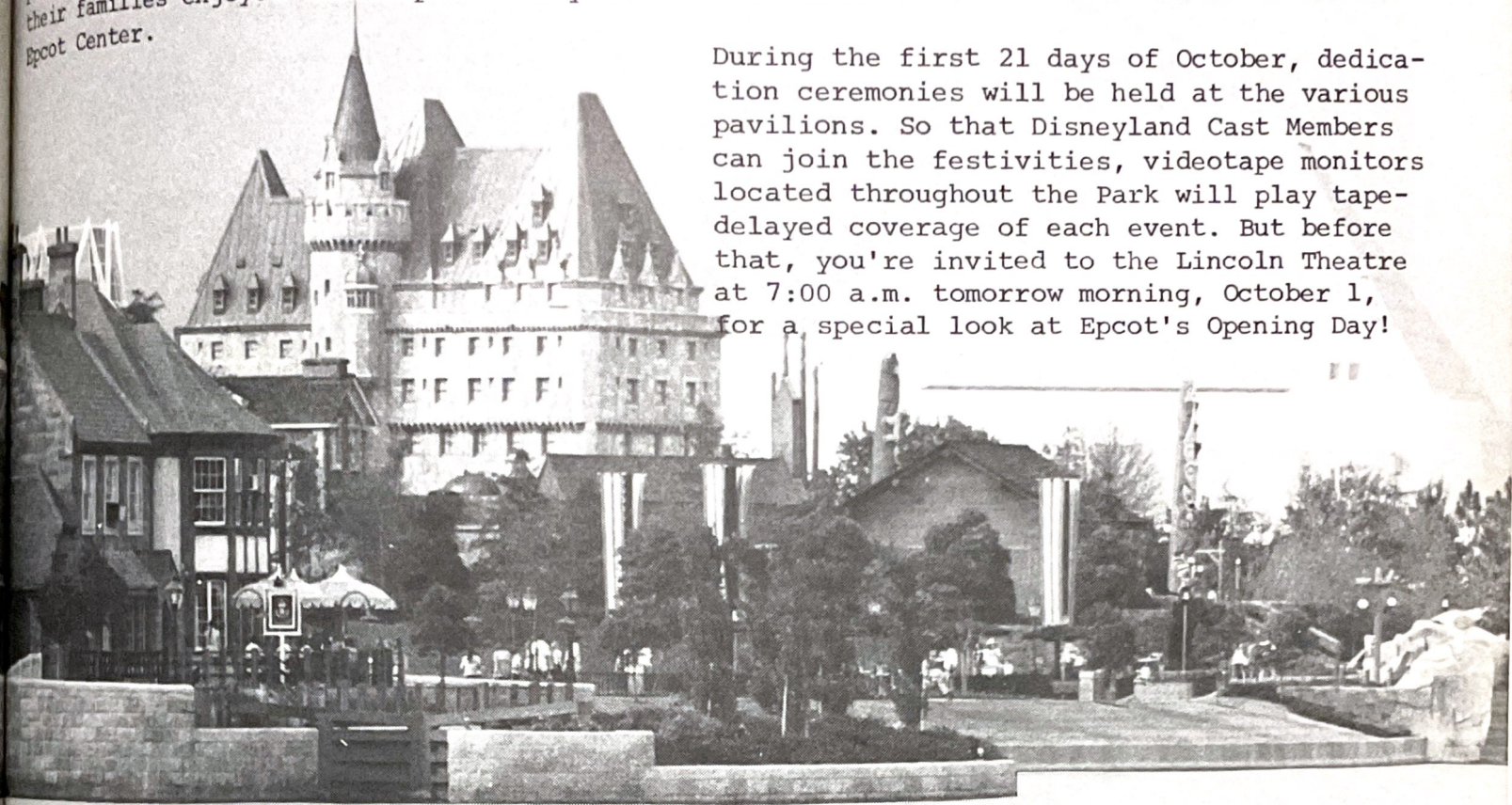


As guests meander through bonsai gardens carved with paths, a kimono-clad Hostess reflects the tranquillity of old Japan.

Slowly but surely Epcot Center is coming to life. On Labor Day, construction personnel working on Epcot Center got a sneak preview of their hard work. From 10:00 a.m. to 8:00 p.m., 26,061 construction personnel and their families enjoyed their special day at Epcot Center.

During the past week, the Walt Disney World Cast Members have been able to experience the project. And over the last three days, Epcot Center has quietly opened to the public for a preview of tomorrow's Day One celebration.

During the first 21 days of October, dedication ceremonies will be held at the various pavilions. So that Disneyland Cast Members can join the festivities, videotape monitors located throughout the Park will play tape-delayed coverage of each event. But before that, you're invited to the Lincoln Theatre at 7:00 a.m. tomorrow morning, October 1, for a special look at Epcot's Opening Day!

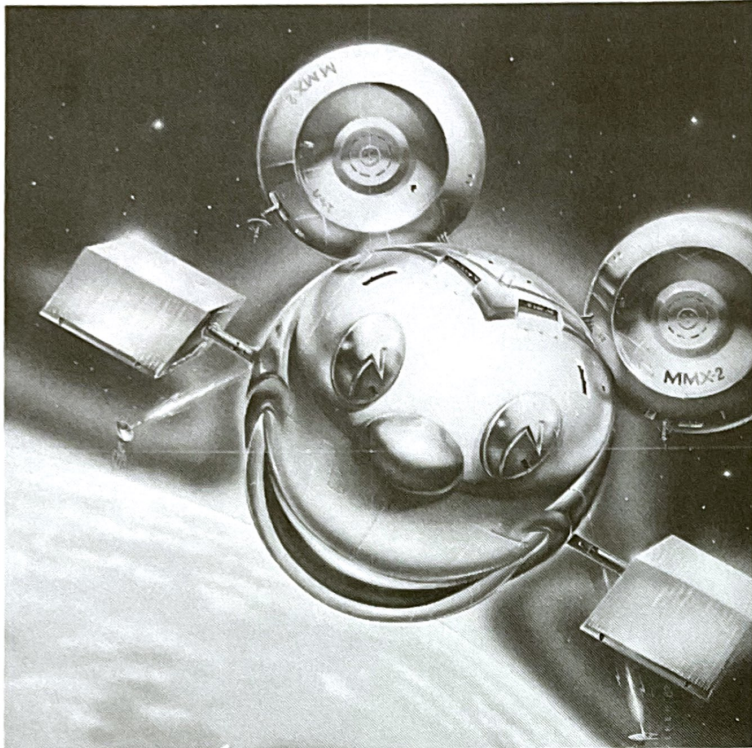


A restaurant, a ride, film presentations and actual greenhouses combine to present The Land in its many shapes and uses in our lives.

The Hotel du Canada, modelled after Ottawa's Chateau Laurier, rises from the serene and verdant landscape of the Canada pavilion.

Disney News

The Disney Channel



You may have heard or read news items in the media recently about the dissolution of the Walt Disney Productions-Westinghouse agreement to form "The Disney Channel" cable television project. The current status of the project was explained by Walt Disney Productions Chairman of the Board Card Walker on September 14.

Card announced that Disney's plans for the pay-television Disney Channel remain on schedule despite the discontinuance of joint venture discussions with Group W Satellite Communications. "Walt Disney Productions remains fully committed to the project," said Card. "The Disney Channel is still very much on target and on schedule for launching."

"Since the Disney Channel was announced, we have had an extremely gratifying response from cable operators," he continued, "and our audience research also points to an extraordinary public desire for our kind of pay-television programming." Card added that "We are very optimistic about the prospects for our Disney Channel when it is launched in spring of 1983."

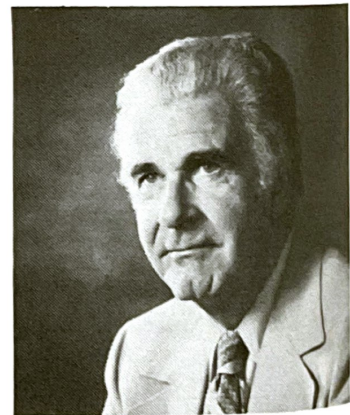
Three weeks ago, Walt Disney Productions and Group W Satellite Communications agreed to discontinue their joint venture talks, citing

"philosophical and creative differences regarding the structure, direction, and management" of the channel. Further discussions on the possibility of Group W acting as sales and distribution agent for the Disney Channel also have been discontinued, Card said, expressing regret that no common ground of agreement could be found with Group W. However, Card said discussions are continuing on the possible use of two of Group W's Westar V transponders.

"The relationship that Disney has had with Group W has been a constructive experience for both parties," Card said. "I have the highest regard for Chairman Dan Ritchie and his very capable Group W staff."

Card's message to cable television industry members also said that Disney is well into development of family audience programming for the channel and is proceeding with new marketing plans. The Disney Channel will offer 18 hours of daily programming service. Shows will be directed to a range of viewers, from early-morning programs for preschool age children to all-family programming at night.

Card Walker, Chairman of the Board and Chief Executive Officer of Walt Disney Productions.



Citing a personal commitment made on behalf of the Disney organization almost a year ago Card said the Company intends "to create the most exciting and forward-thinking program service available for American families."

Card said programming will include films from the Disney library, "probably the greatest single resource of family films in the world," plus new and exciting programs acquired from sources around the world. Most important, he said, Disney has a substantial commitment to the development of new programming for the channel for all members of the family audience.

Park News

Golden Ears

First Aid Hours

The Safety Department announces new hours for First Aid, effective immediately. Central First Aid will be open from 8:00 a.m. until one hour after the Park closes; Bear Country First Aid will operate week-ends from 10:30 a.m. to 7:00 p.m. and on selected party nights; and Fantasyland First Aid will be open on selected week-ends and holidays.

Cast Member First Aid is open from 8:00 a.m. to 4:30 p.m. when the Park is closed; from 7:30 a.m. until one hour after Park closing during all operating hours; and during third shift from Tuesday through Saturday. The Company physician will be available to Cast Members Wednesday, Thursday, and Friday at 11:00 a.m. and at 10:00 a.m. on Saturday. The doctor will be available only until all waiting Cast Members have been seen.

During times when the First Aid facility is not staffed, contact Security at extension 4330.

Locker Clear-Out

The following dates have been set for the after-summer locker clearout: Casual/Seasonal women, October 25; Casual/Seasonal men, November 1; Permanent women, November 8; and Permanent men, November 15. Please return all Disneyland property to Wardrobe Issue any time prior to the day of the locker clearout. Permanent locker combinations will not be changed.

UNOCO

The UNOCO End-of-the-Month Sale begins Friday, September 26 and continues through Tuesday, October 5.

CALIFORNIA WOMAN, FASHION CAROUSEL, and INN FASHIONS - Save 30% to 75% on selected swimsuits, T-shirts, and dresses.

MISS MINNIE - Save up to 50% on selected coordinates and dresses.

CINDERELLA SLIPPER - Assorted casual and dress sandals, pumps, and sport shoes have savings of up to 50%.

The next meeting of the Golden Ears Retirement Club is scheduled for Tuesday, October 12, at 9:00 a.m. in the Golden Horseshoe.

Dick Harren, a Machinist in our Maintenance Division, is retiring today, September 30. After almost 14 years of service, Dick will be missed by his many friends at the Park.



On The Move



Main Street announces the promotion of Addie Crnko to Guest Relations Representative.

Correction to last week's ON THE MOVE: Dave Gearing, formerly with UNOCO, is now Manager of Walt Disney Specialty Products, a division of Walt Disney Productions.

Cast Activities

TV Taping

Cast Activities has tickets to view the TV taping of the new ABC comedy, "It Takes Two." The show stars Patty Duke Astin and Richard Crenna and will be taping on Tuesday, October 26. Trip costs \$3.50 and includes bus transportation and a box dinner.

Basketball

An organizational meeting for Women's and 3-Man Basketball Leagues is scheduled for 7:00 p.m. Thursday, October 7 in the Center. All you hoopsters have just another week to get your teams together and get ready for the basketball season.

Epcot Trip

Epcot Center will open its doors to the world tomorrow and Cast Members can see the project first hand in January. Cast Activities has set up a super travel package with the Walt Disney Travel Company and space is still available. You and accompanying family and friends can reserve up to two rooms. Prices start at \$396 per person and the deadline is October 16. For more information, contact Cast Activities.

Lost and Found Sale

The annual Lost and Found Sale will take place in the Credit Union Parking Lot on Saturday, October 16. A presale for Cast Members only, runs from 7:00 a.m. to 9:00 a.m. with immediate families of Cast Members invited after 9:00 a.m. At noon, cameras and other more valuable items will be sold in an exciting auction. Remember, this sale not only provides great bargains but the money goes to our Operation Christmas Program. This program provides Christmas gifts to the disadvantaged children of Orange County. So get ready for some great bargains and help a child's Christmas be a little merrier.

Parade of Lights

A memorable holiday evening is planned for the viewing of the Christmas Parade of Lights through the Balboa Channel. The evening begins with a delicious roast beef dinner at the Reuben E. Lee. Then it's off to the boat "The Bell" to view the light show. Tickets, which are now on sale for the December 21 trip, cost \$26 each and include transportation and dinner.

Singing Tree

For the first time, the Disney Employees Choir can become the "Christmas Tree," at the Christmas Candlelight Procession. But in order to do this, 80 Cast Members are needed. So if you enjoy singing, why not attend the Thursday evening meetings at Anaheim Free Methodist Church? For directions, or more information, contact Lori at extension 4072.

Radio Club

Due to scheduling difficulties, the Ham Radio Club will meet Monday, October 18 (instead of the 11th) in the Disney University at 7:30 p.m. Interested Cast Members are encouraged to attend.

Film Festival

Tickets are still available for those of you who'd like to take in "Treasure Island," our second Fall Film Festival feature.

Mandarin Inn

How would you like to save 15% the next time you have Chinese food? The Mandarin Inn (located at 875 S. Brookhurst in Anaheim) offers a wide variety of Mandarin and Szechuan cuisine plus that 15% discount. All you need to do is show your Disneyland ID and you and your party will save money on your dinner.

Wheeling and Dealing

Vehicles

- '66 Mustang V8, Partially restored, pony inter, \$2,700, Call (714) 772-9696 after 7 p.m.
- '78 MGB Sports car, xlnt cond, Call (714) 774-8807 after 4.
- '72 240 Z, license 1HEBOOZ, \$3,750/obo, Call (714) 848-8624.
- '67 Bug, rblt eng, new paint, stereo, new starter, body great, \$2,000/obo, Call (714) 544-0196.
- '76 Datsun pick up truck, am/fm stereo, cass, camper shell w/carpeting, more, \$2,850/obo, Call (213) 280-9643.
- '77 Dodge Maxi-van, p/s, p/b, a/c, xlnt cond, Asking \$4,100, Call (714) 772-2814.
- '72 Toyota Corona, auto, good cond, 90,000 mi, Call (714) 738-7864.
- '68 Mustang, 289 V8, auto, p/s, 50,000 org mi, very clean, Asking \$2,000, Call (714) 776-6435.
- '81 GS 750E Suzuki, oil cooler, 2 alarm systems, xlnt. cond, Bassanni header, \$3,000, Call even. (714) 870-5316.
- '69 Fairlane 500, rblt eng and trans, looks/runs like new, \$1,195/obo, Call after 5 (714) 638-8023.
- '69 Mustang, 3-spd, new paint, must sell, \$1,150/obo, Call (714) 638-8023 after 5 p.m.
- '75 Toyota Celica ST, 4-spd, mag wheels, vinyl roof, am/fm stereo, new interior, \$2,950/obo, Call (714) 970-9130.
- Baja 1641DP, custom trans, new tires, xtras, minus body, \$25/obo, Call (714) 848-8624.
- '81 Ford Mustang, p/s, p/b, console, am/fm, very clean, 10 mi, \$7,000/obo, Call (714) 536-5077.
- '82 6BZ-750 Kawasaki motorcycle, new, hardly used, xlnt cond, take over payments + \$300 down, Call (714) 991-3948.
- '70 VW as is, \$1,100/obo, Call (714) 538-5486 after 5:30.
- '80 1/2 Porsche 924, mint cond, power windows, air, sunroof, special paint, only 18KM, \$12,700/obo, Call (714) 828-1334.
- '77 Dodge, 1/2 ton pick-up, V8, am/fm, air, w/camper shell and boot and hitch, \$3,495, Call (213) 420-7659.
- '72 Chevy Camaro, clean, \$15,000/obo, Call (714) 772-9090.

Housing

- Roommate to share 3 bdrm, 2 1/2 bath condo, 2 blocks from park with washer & dryer, \$190 + 1/3 util, Call (714) 635-1838.
- Non-smoking female wanted to rent room w/private bath, kitchen priv, no pets, \$175 mo, Call (714) 539-0253.

Female Roommate wanted to share 2 bdrm, 2 bath, condo, across from CSUF, \$220 mo, Call (714) 992-6887.

Roommate needed: 2 bdrm, 2 bath, townhouse, pool, Jacuzzi, n-smoker, \$275 mo + 1/3 util, Call (213) 431-6857.

Room for rent: close to 91 frwy & CSUF, private bath, \$200 mo including util, Call (714) 680-0238.

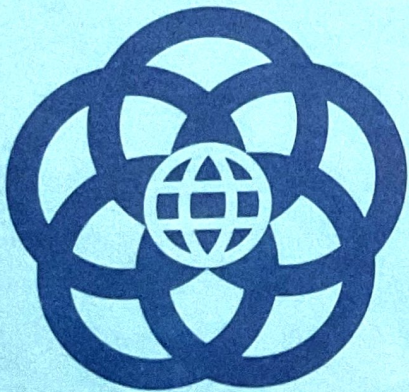
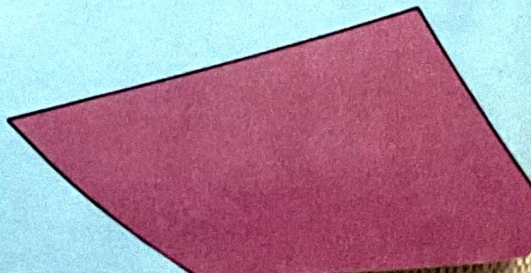
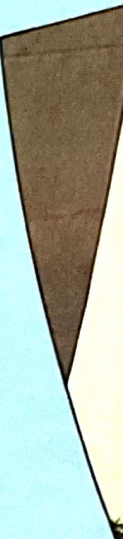
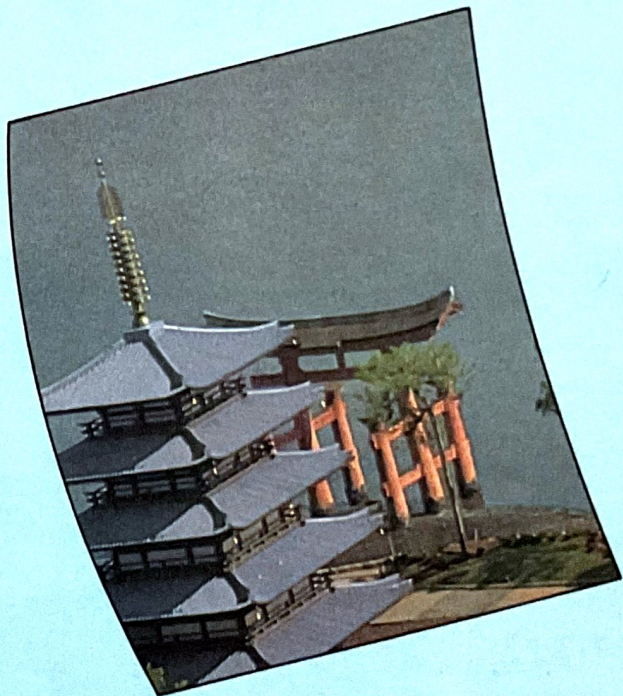
Wanted: Roommate for apt. w/pool & ON TV, 1 mi. to D/L, \$275 mo, Call (714) 971-7241 after 6:00 p.m.

Etc.

- Amana 20 Frost-Free refrigerator/yellow, \$300/firm, Call (714) 983-9264.
- Hoover Upright Carpet Sweeper, xlnt cond, w/attachments, \$40, Call (714) 546-0389.
- Litton 3-in-1 Microwave in xlnt cond, \$325/obo, Call (714) 983-9264.
- 10' wood airplane propellor, old, make offer, Call (714) 546-0389.
- Stereo Cabinet w/smoke glass door and light, \$75, Call (714) 776-6435.
- Baby Items: Baby Swing w/cradle, \$25, Casco Infant seat, \$7, Call (714) 541-0365.
- 8' ft contemporary sofa, brown and gold cut velvet, Must sell, \$150/obo, Call (714) 774-1092.
- 2 non-smoking girls need 2 of the same for the Epcot trip, Jan 10, Call (714) 750-9065.
- Boys surf/diving watch, brand new, great for school, \$15, Call (714) 640-0007.
- Velbon Tripod: 3-way tilt head, hardly used, \$20, Call (714) 630-8368.
- 16 1/2 Glasstron Ski Boat, 90 H.P., Johnson outboard, xlnt. cond, \$2,200, Call (714) 739-0800.
- 15' Ski Boat, 75 H.P., Evinrude, \$1,350, Call (714) 539-2062.
- 70 c.c. '74 Indian Dirt Bike, good cond, Call (714) 892-7088.
- Surfboard, tri-fin, xlnt cond, \$50, Call (714) 892-7088.
- Wanted: Outdoor Vacuum, reasonable, Call (213) 431-7228.
- 2 Grease Guns for your car, etc. w/5lb can Grease, \$5, Call (714) 750-3595.
- Wood Wall unit, 7' long, \$50, Call (714) 776-6435.
- FREE kittens: Boys or Girls, Call (714) 768-1616.
- Please help us find a good home for our elderly male Dachshund, 12 yrs old, free, Call (714) 522-7363.

Disneyland LINE

The Disneyland Line, ext. 4079, is a weekly publication of Cast Communications. "Wheeling and Dealing" items are accepted at Cast Activities in the Center and are printed as space allows. No commercial ads, please.
Staff: Bob Kumamoto, Editor; John Davidheiser; Wemkea Sherman.



Walt Disney World[®]
EPCOT
CENTER